



MARRIOTT MARQUIS
HOUSTON

MARRIOTT MARQUIS HOUSTON



A topographic map of the Houston area, showing contour lines, roads, and various landmarks. The map is oriented vertically, with the city center at the top and the coast at the bottom. The map is rendered in a light, monochromatic style.

LOCATION

The Marriott Marquis Houston is located next to Discovery Green Park and connected to the George R. Brown Convention Center. This premier location in the heart of the city, is across from Minute Maid Park, home of the Astros. Down the street from the hotel sits the Toyota Center, home of the Rockets and a spectacular concert venue. The Marquis is close to upscale shopping, and within walking distance to a wide variety of restaurants and nightlife.

HOTEL FEATURES

The hotel boasts 1,000 guestrooms and suites with over 100,000 sq. ft. of dedicated indoor meeting space including a 39,716 sq. ft. ballroom – Houston's largest. The Altitude pool deck adds another 50,000 sq. ft. of outdoor event space.

The Marquis offers 6 restaurants and bars, including Biggio's, a high energy multi-level sports bar and restaurant.

Recreational elements such as a full-service spa and fitness center, infinity pool, and a one-of-a-kind rooftop Texas-shaped lazy river located on the Altitude pool deck.

RECREATION & LEISURE

Outdoor infinity edge pool • Rooftop Texas-shaped lazy river
• Multiple event lawns • Pure Spa with 7 treatment rooms • Fitness Center • M Club Lounge • Retail/Sundry

MEETING AND EVENT FACILITIES

2 ballrooms, 2 boardrooms and 37 total breakout meeting rooms totaling 100,271 sq. ft. of indoor meeting space
• Houston's Largest Ballroom • Meeting Services App, a complimentary app for meeting management at your fingertips • Group Sync allows you to instantly reserve workspaces just like a hotel room

ACCOMMODATIONS

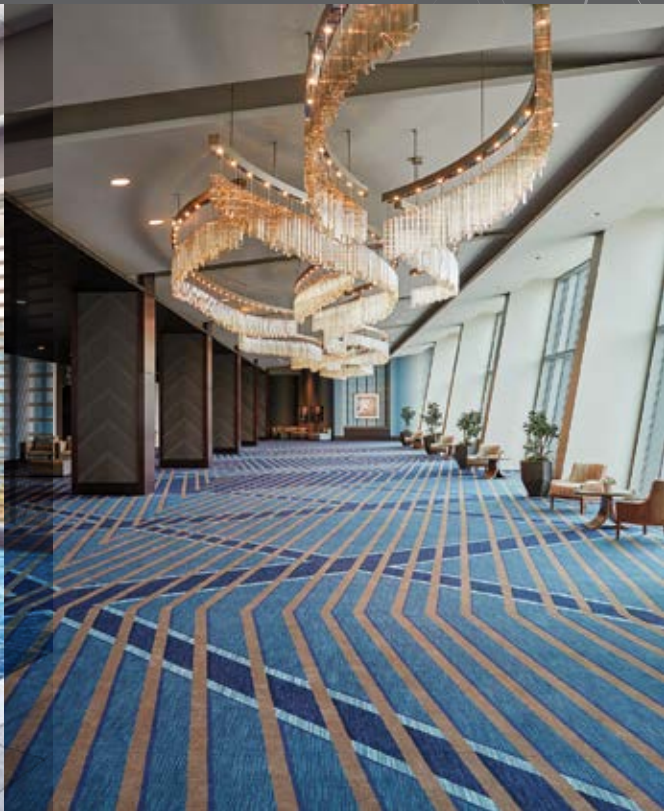
Committed to a smoke-free environment • 360 King Rooms, 600 Double Queen Rooms, 22 Executive Suites, 9 Hospitality Suites (2 bay), 3 Luxury Suites (3 bay), 4 VP Suites (3 bay) and 2 Presidential Suites (6 bay) totaling 1,000 rooms and suites

RESTAURANTS & LOUNGES

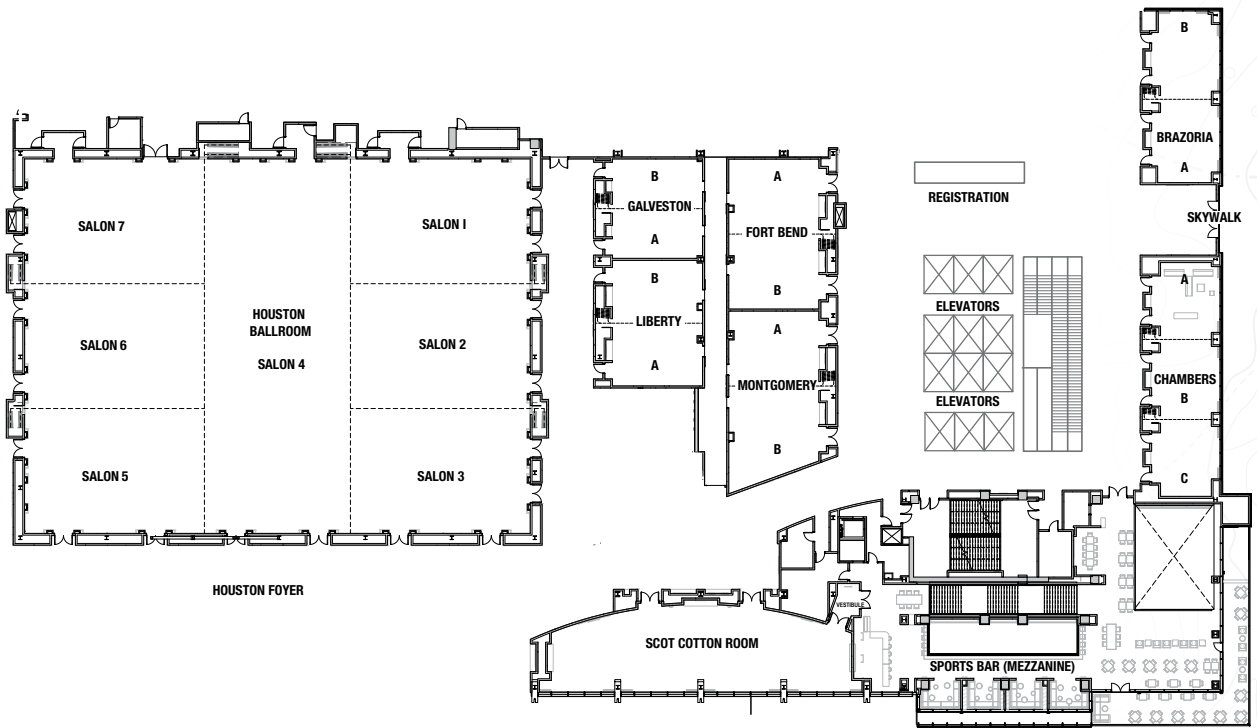
An array of dining and delivery options to choose from • A la Carte • Texas T Café • Walker Street Kitchen • Biggio's, a multi-level sports bar and restaurant, named after Houston Astros baseball Hall of Famer, Craig Biggio • High Dive • Cueva Wine Bar • Xochi, helmed by James Beard Award-winning Chef Hugo Ortega, serves traditional Oaxacan/Mexican cuisine with an unmistakable Texas flair

AIRPORTS

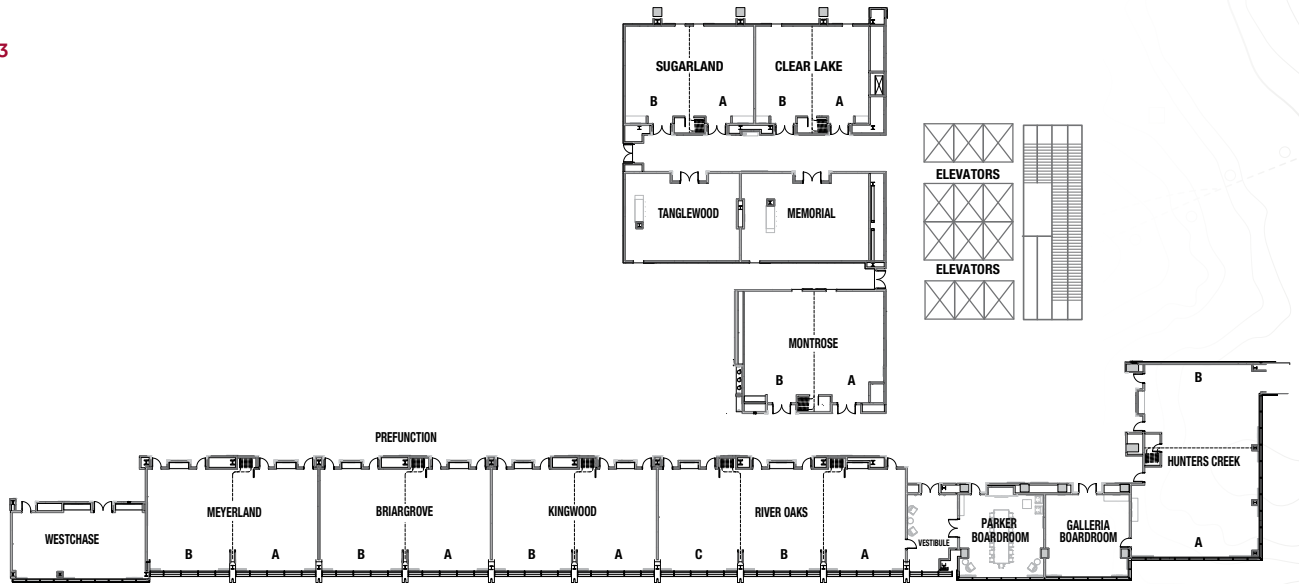
George Bush Intercontinental Airport (IAH), 20.2 miles N • William P Hobby Airport (HOU), 9.8 miles SE



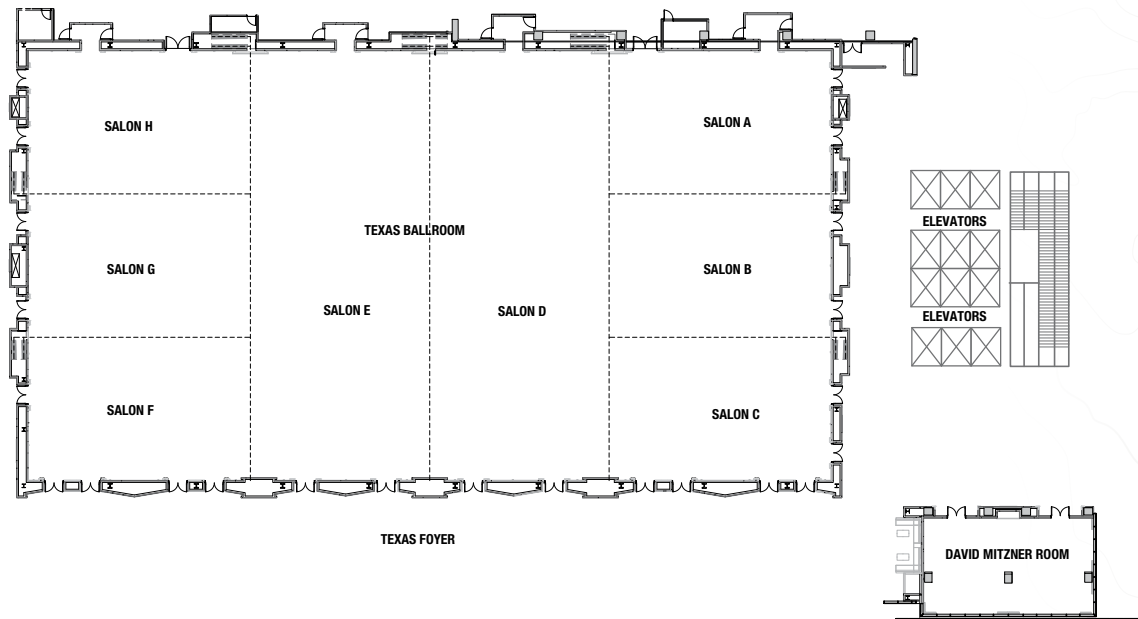
LEVEL 2



LEVEL 3



LEVEL 4



	DIMENSIONS		CAPACITY						
	L x W x H	Sq. Ft.	Theater	Classroom	Conference	U-Shape	Hollow Square	Reception	Banquet
MEETING ROOM									
Texas Ballroom	271'x145'x24'	39,716	4,800	2,322	–	–	–	4,119	2,310
Salons A - C & F - H (each)	75'x48'x24'	3,676	418	189	44	52	64	380	200
Salon A - C & F - H (combined)	75'x145'x24'	11,029	1,200	570	–	–	–	1,139	720
Salon D - E (each)	60'x145'x24'	8,829	960	456	–	–	–	919	600
Salon D - E (combined)	120'x145'x24'	17,658	2,400	972	–	–	–	1,840	1,100
Salon A - D & E - H (combined)	135'x145'x24'	19,858	2,700	1,080	–	–	–	2,059	1,210
David Mitzner Room	58'x33'x14'	1,845	140	81	36	30	36	193	120
Houston Ballroom	170'x126'x22'	21,729	3,000	1,248	–	–	–	2,247	1,300
Houston 1-3 & 5-7 (each)	60'x42'x22'	2,580	270	144	36	42	52	265	150
Houston 1-3 & 5-7 (combined)	60'x126'x22'	7,740	1,000	399	–	–	–	798	500
Houston 4	49'x126'x22'	6,249	780	336	–	–	–	649	400
Houston 1-4 & 4-7 (combined)	110'x126'x22'	13,989	1,750	768	–	–	–	1,447	900
Brazoria	57'x25'x14'	1,261	120	42	36	32	40	131	80
Brazoria A or B	30'x25'x14'	655	60	18	16	16	20	67	30
Chambers	79'x25'x14'	1,715	150	60	48	48	52	180	100
Chambers A, B or C	26'x25'x14'	572	50	18	12	16	16	59	30
Fort Bend	50'x34'x14'	1,602	150	72	32	36	40	169	80
Fort Bend A or B	25'x34'x14'	800	75	36	16	20	20	85	40
Galveston	33'x34'x14'	1,059	100	60	20	24	28	112	60
Galveston A or B	16'x34'x14'	528	50	24	12	16	16	56	20
Liberty	42'x34'x14'	1,334	120	72	24	30	32	141	70
Liberty A or B	21'x34'x14'	672	60	36	12	16	20	70	30
Montgomery	61'x34'x14'	1,768	180	72	32	34	44	187	90
Montgomery A	25'x34'x14'	804	90	36	16	18	24	85	40
Montgomery B	36'x34'x14'	976	90	36	16	18	24	85	50
Scot Cotton Room	108'x34'x13'	2,833	260	126	64	60	64	289	160
Clear Lake	38'x34'x14'	1,220	162	60	20	28	32	130	80
Clear Lake A or B	19'x34'x14'	608	78	24	16	20	20	65	30
Sugarland	43'x34'x14'	1,390	180	72	24	28	36	147	90
Sugarland A or B	21'x34'x14'	688	90	36	16	20	20	73	40
Memorial	43'x30'x14'	1,202	102	36	16	22	24	127	60
Tanglewood	38'x30'x14'	1,075	102	36	16	22	24	113	60
Montrose	47'x39'x14'	1,693	220	84	28	28	40	179	110
Montrose A	23'x34'x14'	782	108	36	20	22	24	85	50
Montrose B	23'x39'x14'	897	112	36	20	22	24	85	60
Hunter's Creek	64'x43'x12'	2,635	324	114	40	40	52	267	180
Hunter's Creek A	36'x43'x12'	1,720	192	63	24	26	32	156	100
Hunter's Creek B	28'x41'x12'	1,075	135	48	20	22	28	111	70
River Oaks	84'x36'x14'	2,975	392	144	52	42	60	306	200
River Oaks A, B or C	27'x36'x14'	935	112	45	20	22	24	101	60
Kingwood	55'x36'x14'	1,972	254	90	32	32	40	203	130
Kingwood A or B	27'x36'x14'	935	112	54	20	22	24	101	60
Briargrove	57'x36'x14'	2,053	264	99	36	32	44	210	140
Briargrove A or B	28'x36'x14'	969	126	45	20	22	24	105	60
Meyerland	57'x36'x14'	2,052	264	99	36	32	44	210	140
Meyerland A or B	28'x36'x14'	969	126	45	20	22	24	105	60
Westchase	44'x25'x14'	1,081	124	42	28	20	28	110	70
Galleria Boardroom	28'x28'x14'	806	90	27	16	18	20	81	50
Parker Boardroom	30'x29'x14'	836	–	–	18	–	–	20	–
Altitude pool deck	209'x341'x17'	50,000	–	–	–	–	–	700	550



1777 Walker Street, Houston, Texas 77010

Hotel: 713.654.1777 | Sales: 346.888.2478

<https://www.marriott.com/en-us/hotels/houmq-marriott-marquis-houston/overview/>

 [facebook.com/marriottmarquishouston](https://www.facebook.com/marriottmarquishouston)

 [@themarquishou](https://www.instagram.com/themarquishou)