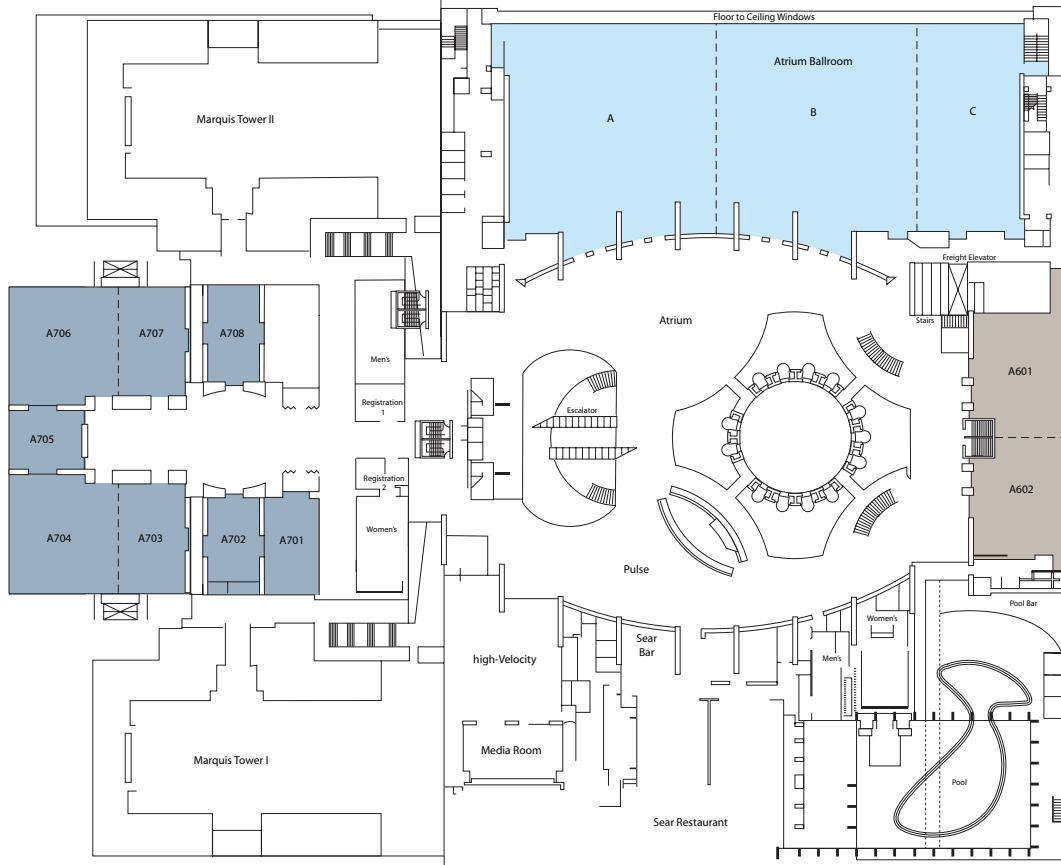


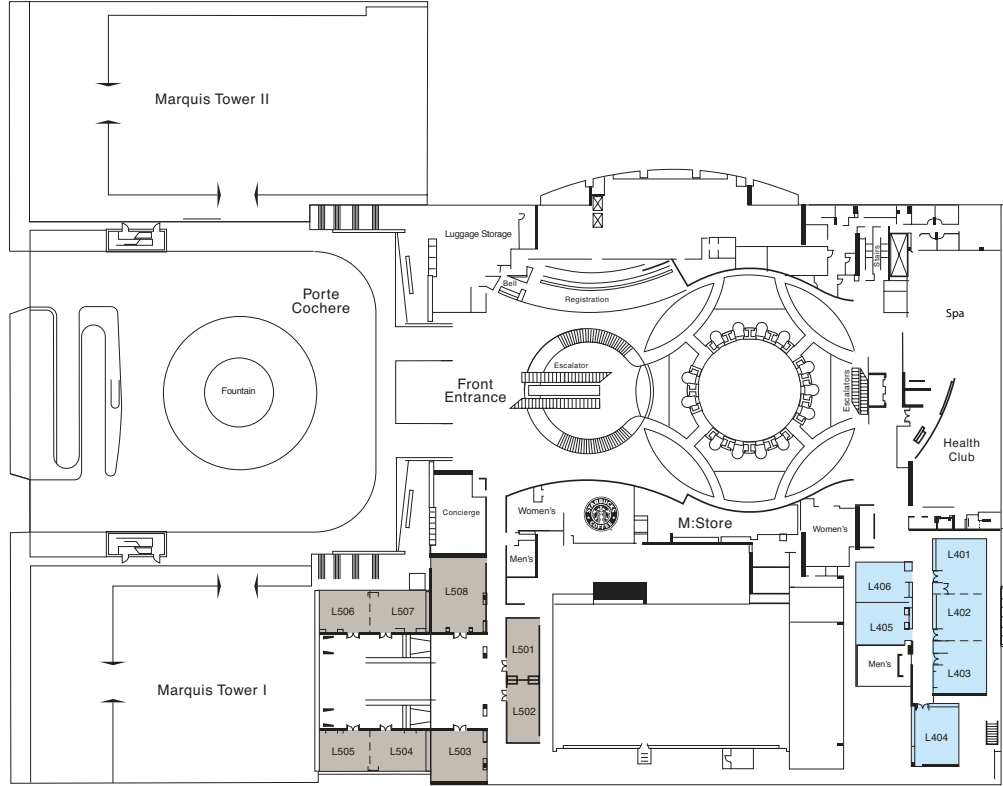
Atrium Level



Capacity

Meeting Room	Dimensions (LxWxH)	Square Feet	Theatre	Schoolroom	Hollow Square	Reception	Banquet
Atrium Ballroom	238x110x30	25,005	2,500	1,600	—	2,500	2,000
Atrium Ballroom A	110x105x30	11,170	1,110	720	—	1,100	880
Atrium Ballroom B	110x110x30	11,385	1,110	720	—	1,100	880
Atrium Ballroom C	23x110x30	2,450	240	140	—	225	180
A601	45x54x10	2,416	240	156	—	250	190
A602	45x54x10	2,419	240	156	—	250	190
A601 & A602	45x108x10	4,835	480	310	—	500	380
A701	25x45x10	1,140	100	54	42	120	60
A702	24x40x10	964	80	54	42	100	60
A703	31x51x10	1,599	145	84	54	160	80
A704	52x51x10	2,676	174	120	60	280	160
A703 & A704	83x52x10	4,275	400	198	—	450	280
A705	36x34x10	1,224	100	54	30	130	80
A706	52x51x10	2,676	174	120	60	250	160
A707	31x51x10	1,603	145	84	54	180	80
A706 & A707	83x52x10	4,279	400	198	—	450	280
A708	24x45x10	1,096	80	54	42	120	60

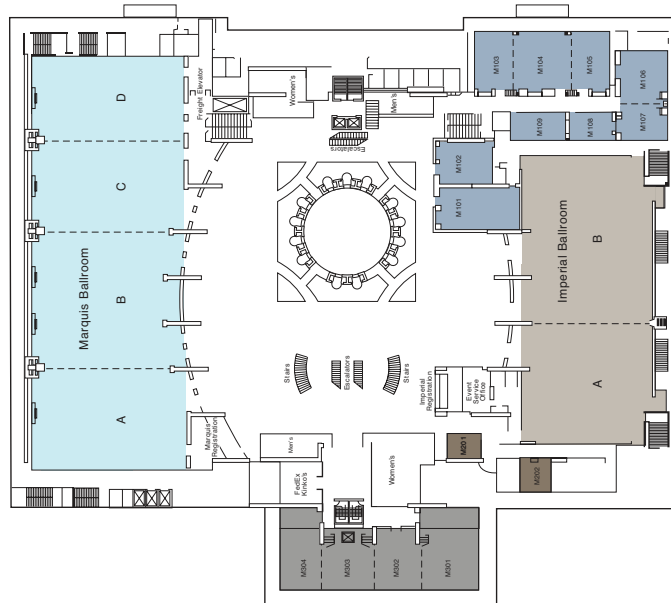
LobbyLevel



Capacity

Meeting Room	Dimensions (LxWxH)	Square Feet	Theatre	Schoolroom	Hollow Square	Reception	Banquet
L401	26x25x9	627	60	30	24	50	40
L402	25x30x9	726	70	36	30	80	50
L401 & L402	25x56x9	1,353	115	64	42	140	90
L403	25x24x9	597	55	24	20	50	30
L402 & L403	25x54x9	1,323	110	60	38	140	80
L401, L402 & L403	25x80x9	1,950	180	110	—	200	130
L404	22x28x8	627	55	30	20	80	40
L405	25x21x9	530	45	24	18	40	30
L406	25x21x9	523	45	24	18	40	30
L405 & L406	25x54x9	—	100	65	44	75	80
L501 Boardroom	16x30x9	482	—	—	—	—	—
L502 Boardroom	16x30x9	483	—	—	—	—	—
L503	26x26x9	685	50	36	26	50	40
L504	19x28x11	534	42	24	22	50	40
L505	19x27x11	558	42	24	22	50	30
L504 & L505	19x55x11	1,092	90	52	42	90	70
L506	19x27x11	558	42	24	22	50	30
L507	19x27x11	533	42	24	22	50	40
L506 & L507	19x54x11	1,091	90	52	42	90	70
L508	28x37x9	1,058	100	64	40	90	80

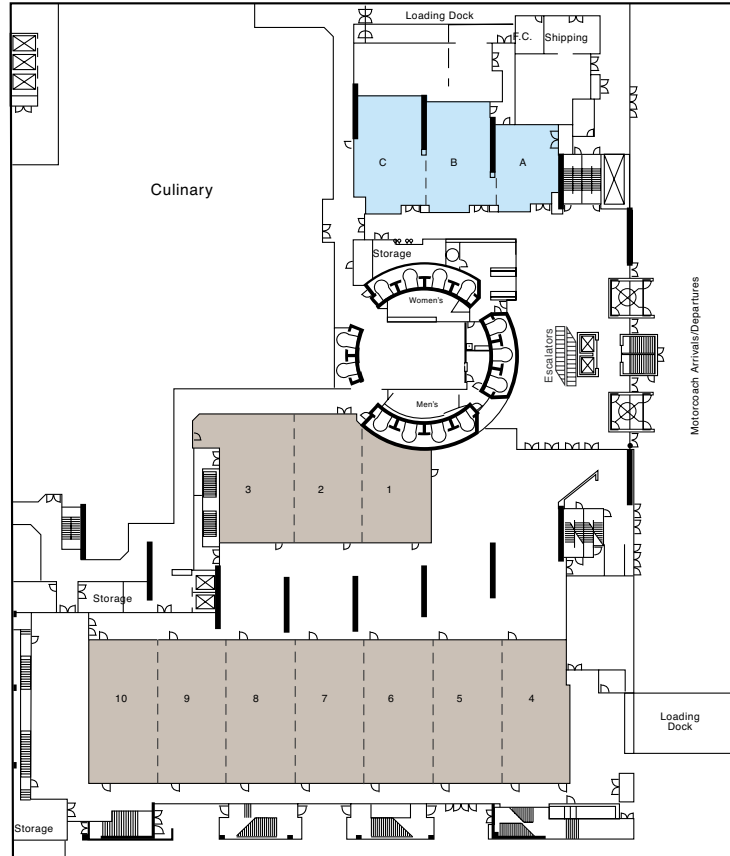
Marquis Level



Capacity

Meeting Room	Dimensions (LxWxH)	Square Feet	Theatre	Schoolroom	Hollow Square	Reception	Banquet
Marquis Ballroom	247x89x18	22,273	2,220	1,500	—	2,200	1,780
Salon A	59x89x18	5,431	540	350	—	500	430
Salon B	82x86x18	7,185	720	460	—	700	570
Salon C	55x89x18	5,067	500	300	—	480	400
Salon D	51x89x18	4,590	450	300	—	450	400
Imperial Ballroom	92x170x18	13,343	1,100	650	—	1,300	960
Salon A	92x72x18	5,583	400	250	—	500	370
Salon B	92x98x18	7,760	600	360	—	750	490
M101	25x47x10	1,185	100	64	42	90	80
M102	25x31x10	799	65	42	28	60	50
M103	34x22x10	784	75	50	28	50	50
M104	34x34x10	1,191	100	64	42	90	80
M103 & M104	34x56x10	1,975	170	110	—	180	110
M105	34x22x10	784	75	50	28	50	50
M104 & M105	34x56x10	1,975	170	110	—	180	110
M103, M104 & M105	34x78x10	2,759	250	160	—	250	150
M106	28x31x10	830	70	45	26	70	50
M107	28x22x10	582	50	27	20	60	30
M106 & M107	28x53x10	1,412	130	76	42	130	80
M108	17x26x10	442	35	20	14	30	20
M109	17x33x10	568	55	32	24	40	40
M201	20x15x9	303	24	12	12	20	10
M202	44x18x10	800	70	50	30	70	50
M301	48x35x10	1,666	140	90	42	140	90
M302	36x31x10	1,031	90	60	30	80	50
M301 & M302	48x121x10	2,697	—	150	—	180	150
M303	28x27x10	863	65	45	20	70	40
M302 & M303	48x121x10	1,894	—	110	—	150	110
M304	48x28x10	1,218	120	72	42	100	80
M303 & M304	48x121x10	2,081	—	100	—	150	100

International Level



Capacity

Meeting Room	Dimensions (LxWxH)	Square Feet	Capacity				
			Theatre	Schoolroom	Hollow Square	Reception	Banquet
International 1	27.6x36.1x10	992	90	40	20	75	40
International 2	27.6x44.1x10	1,235	110	60	30	100	60
International 3	27.6x50.1x10	1,400	130	70	34	150	80
International 4	26.0x56.1x10	1,480	160	90	48	200	100
International 5	27.6x56.1x10	1,571	180	110	54	200	100
International 6	27.6x56.1x10	1,571	180	110	54	200	100
International 7	27.6x56.1x10	1,571	180	110	54	200	100
International 8	27.6x56.1x10	1,571	180	110	54	200	100
International 9	27.6x56.1x10	1,571	180	110	54	200	100
International 10	27.6x56.1x10	1,571	180	110	54	200	100
International A	34.1x24.1x10	870	80	36	18	50	40
International B	27.6x44.1x10	1,217	100	50	28	80	60
International C	29.6x46.6 x10	1,372	20	60	30	100	80
International Hall*	—	28,281	1,860	522	—	4,600	2,200
International Ballroom 4-10	191.6x56.1x10	10,749	990	400	—	1,600	650
International 1-10 Pre-function	—	8,691	—	—	—	1,100	191

*Can display 142 - 8x10 booths or 115 - 10x10 booths

Skyline Level

- Square feet 7,800
- Reception Capacity 1,100

