

## Meeting Space Capacities

### ATRIUM LOBBY LEVEL

ROOM	DIMENSIONS	SQR FT	CEILING	T/S	S/R **	H/Sq	U-SHAPE	BANQ RDS/10 RECEPTION	CRESCENT RDS 7 MTG	CONF	
Grand Ballroom	89 x 134	12,000	15'6" *	1330	700	-	-	1000	511	-	
Grand Ballroom A	79 x 89	7,000	15'6" *	800	400	112	84	560	315	68	
Grand Ballroom B	55 x 89	5,000	15'6" *	492	254	88	72	390	224	68	
Wedgwood Ballroom	42 x 52	2,184	10'10"-13.5"	220	112	56	44	180	91	44	
Bosque	15 x 29	435	10'10"	38	21	18	15	20	14	18	
Concho	27 x 29	780	10'10"	70	32	30	25	50	28	26	
Frio	26 x 28	730	10'10"	70	32	30	25	50	28	26	
Guadalupe	23 x 25	575	10'10"	50	24	24	20	40	28	18	
Nueces	25 x 30	750	10'10"	65	32	30	25	50	28	26	
Colorado Boardroom	13 x 27	350	10'10"	Permanent Boardroom Table							10
Canadian Boardroom	13 x 27	350	10'10"	Permanent Boardroom Table							10
Brazos			9'9" – 14'2"	Tiered Amphitheatre – Fixed Schoolroom Seating for 55 guests							
Atrium Teak Bell Area	n/a	-						300	-	-	
The Arbor (Semi Enclosed are in Lobby)	Varies	2500		8' x 30" tabletop displays - 25 6' x 30" tabletop displays - 32				240	n/a	n/a	

\* Grand Ballroom – Clearance from Chandeliers to floor – 14' 4". Wedgwood Ballroom – Clearance from Chandeliers to floor – 8'10"  
 \*\* Max capacity Schoolroom is based on 4 guests per 8' table or 3 guests per 6' (depending on meeting room configuration)

### GLASS OAKS (ADJOINS HOTEL – ATRIUM LEVEL)

Glass Oaks Ballroom *	Dimensions Vary	5454 *	Varies 12' – 16'	400	195	84	70	*310 – 350	161	60
-----------------------	-----------------	--------	------------------	-----	-----	----	----	------------	-----	----

\* Glass Oaks Square footage includes 950 sq ft. pre-function space. 18' x 618' x 62' Tile Area 53 x 72-90' Carpet. \* Max capacity of 350 at Rounds includes contained pre-function area

### PLAZA LEVEL

ROOM	DIMENSIONS	SQR FT	CEILING	T/S	S/R **	H-Sq	U-SHAPE	BANQ RDS/10 RECEPTION	CRESCENT RDS 7 MTG	CONF
San Antonio	29 x 39	1,131	10'10"	140	66	36	30	90	49	30
San Marcos	30 x 31	930	10'10"	104	54	34	26	80	49	25
Sabine	28 x 47	1,316	10'10"	145	78	46	40	110	70	36
Pecos	36 x 31	1,100	10'10"	120	60	34	30	80	49	28
San Saba	25 x 29	725	10'10"	60	32	30	26	50	35	24
Trinity	30 x 85	2,550	10'10"	280	144	68	58	190	119	-
Trinity A	30x 40	1,200	10'10"	127	66	42	34	90	56	30
Trinity B	30 x 40	1,200	10'10"	127	66	42	34	90	56	30

\*\* Max capacity Schoolroom is based on 4 guests per 8' table

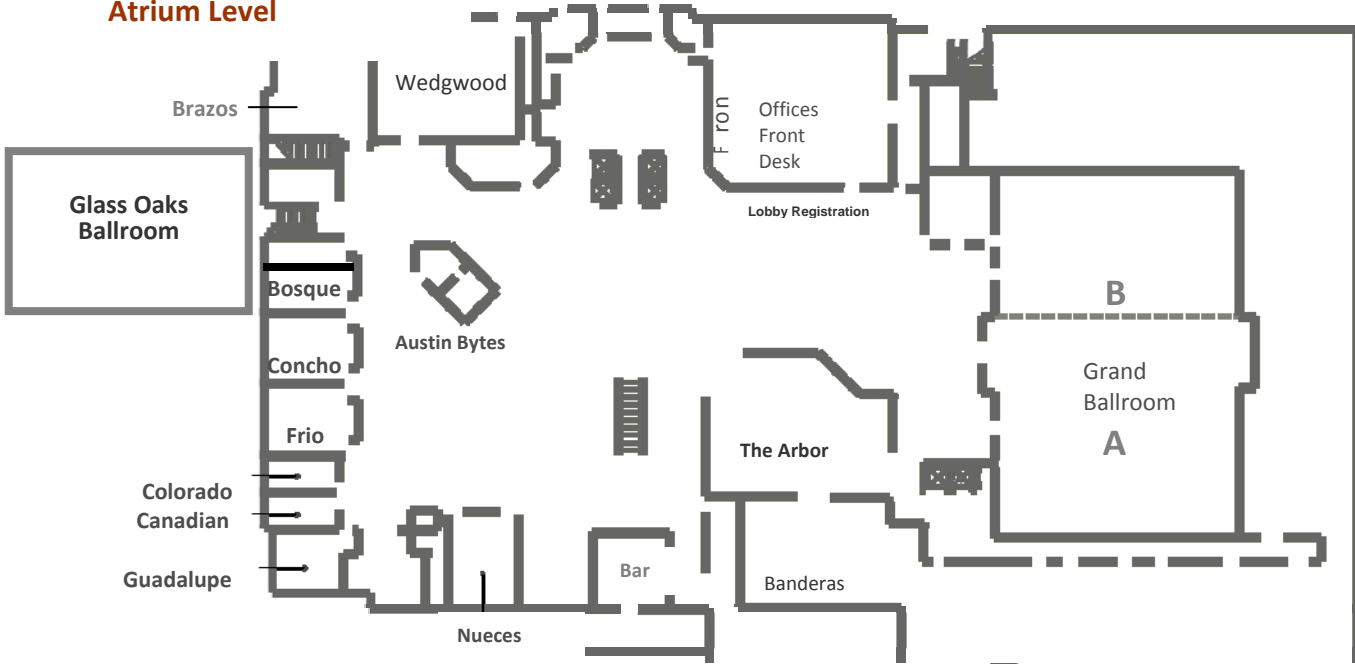
### RIO GRANDE (PLAZA LEVEL)

Rio Grande Exhibit Hall	146 x 259	30,300	13' - 14.8" *	-	-	-	-	1850	-	-
Rio Grande A		16,000	13' - 14.8" *	-	-	-	-	900	-	-
Rio Grande B		14,000	13' - 14.8" *	-	-	-	-	950	-	-
Rio Grande is a Carpeted Event & Exhibit Hall with Suspended lighting & Enhanced Column Lighting. Room Contains multiple Columns. * Clearance from Floor to Suspended Lighting fixtures is 13'										
Rio Exhibit Capacities	Rio Grande	8' x 10' - 151	10' x 10' - 109							
	Rio A	8' x 10' - 77	10' x 10' - 55							
	Rio B	8' x 10' - 75	10' x 10' - 54							

Freight Elevator 9'H x 6' W x 7'8 D, Floor Load 300 lbs/sq inch, Door Entry: 14'H x 11'3"W

**Meeting Space Floor Plan**

**Atrium Level**



**Plaza Level**

