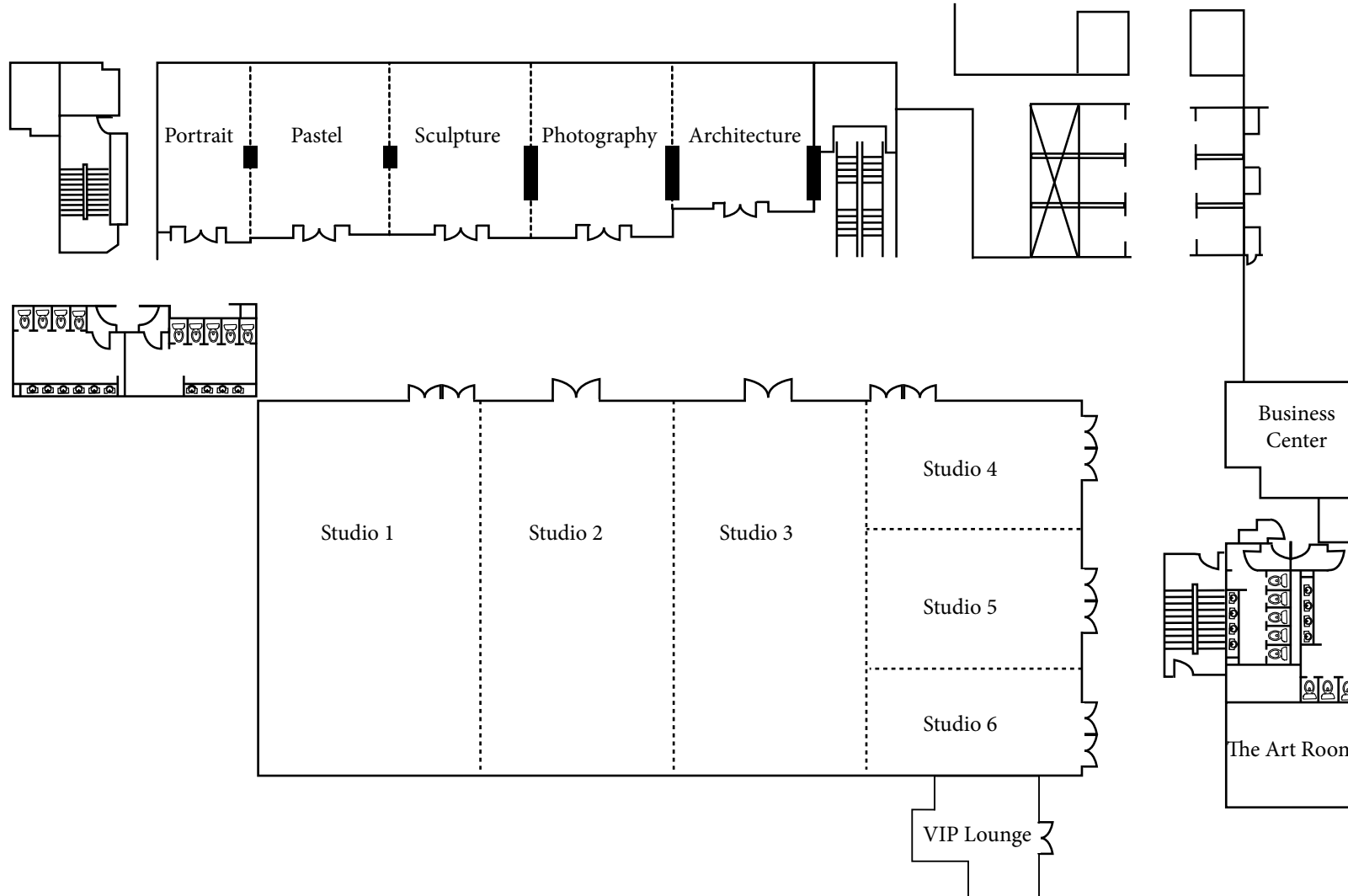




| Venue          | Dimensions | Area<br>Sq.m. | Ceiling<br>Height | Capacity                |           |         |         |           |
|----------------|------------|---------------|-------------------|-------------------------|-----------|---------|---------|-----------|
|                | L×W<br>(m) |               |                   | Theater                 | Classroom | U-Shape | Banquet | Reception |
| Grand Ballroom | 51.8 x 25  | 1294          | 6                 | 1100                    | 616       | 320     | 900     | 1100      |
| Studio 1       | 12.93 x 25 | 323           | 6                 | 230                     | 154       | 80      | 192     | 250       |
| Studio 2       | 12.93 x 25 | 323           | 6                 | 230                     | 154       | 80      | 192     | 250       |
| Studio 3       | 12.93 x 25 | 323           | 6                 | 230                     | 154       | 80      | 192     | 250       |
| Studio 4       | 12.93 x 8  | 108           | 6                 | 75                      | 50        | 30      | 60      | 70        |
| Studio 5       | 12.93 x 8  | 108           | 6                 | 75                      | 50        | 30      | 60      | 70        |
| Studio 6       | 12.93 x 8  | 108           | 6                 | 75                      | 50        | 30      | 60      | 70        |
| Studio 4+5+6   | 12.93 x 25 | 323           | 6                 | 230                     | 154       | 80      | 192     | 250       |
| Studio 1 + 2   | 25.86 x 25 | 647           | 6                 | 460                     | 308       | 160     | 384     | 500       |
| Studio 3 + 4   | 25.86 x 25 | 647           | 6                 | 460                     | 308       | 160     | 384     | 500       |
| Pastel         | 8.5 x 10.5 | 89            | 3                 | 70                      | 50        | 30      | 48      | 55        |
| Sculpture      | 8.5 x 10.5 | 89            | 3                 | 70                      | 50        | 30      | 48      | 55        |
| Photography    | 8.5 x 10.5 | 89            | 3                 | 70                      | 50        | 30      | 48      | 55        |
| Architecture   | 8 x 8      | 64            | 3                 | 35                      | 27        | 20      | 24      | 25        |
| The Art Room   | 5.7 x 8    | 46            | 3                 | 24                      | 18        | 20      | 12      | 20        |
| Portrait       | 5.6 x 10.5 | 59            |                   | Boardroom style meeting |           |         |         |           |

**JW MARRIOTT HOTEL BEIJING • 北京JW万豪酒店**  
 83 Jian Guo Road, China Central Place, Chaoyang District, Beijing 100025, P. R. C  
 北京市朝阳区华贸中心建国路83号 • 邮政编码: 100025  
 Tel电话: (86 10) 5908 6688 Fax传真: (86 10) 5908 6699  
[www.jwmarriottbeijing.com](http://www.jwmarriottbeijing.com) / [www.cn.jwmarriottbeijing.com](http://www.cn.jwmarriottbeijing.com)

Grand Ballroom Floor plan



**JW MARRIOTT HOTEL BEIJING • 北京JW万豪酒店**

83 Jian Guo Road, China Central Place, Chaoyang District, Beijing 100025, P. R. C

北京市朝阳区华贸中心建国路83号 • 邮政编码: 100025

Tel电话: (86 10) 5908 6688 Fax传真: (86 10) 5908 6699

[www.jwmarriottbeijing.com](http://www.jwmarriottbeijing.com) / [www.cn.jwmarriottbeijing.com](http://www.cn.jwmarriottbeijing.com)