



ACCOMMODATIONS

1,101 guest rooms • 47 suites • Check-in: 4:00 p.m. • Check-out: 12:00 noon • Marriott Revive® Bedding • Smoke-free hotel policy • High-speed Internet access • Ultra-compatible Plug-in Panel to connect MP3, digital camera, and gaming system • 37" HDTV • In-room pay movies • Free HBO, ESPN and CNN • Hair dryer • Iron and ironing board • Mini refrigerator • Laptop safe

RESTAURANTS & LOUNGES

Champions, a new sports bar and restaurant, featuring appetizers, sandwiches, burgers and a wide variety of micro-brewed beers • Open for breakfast, lunch and dinner • Starbucks®

RECREATION & LEISURE

Indoor pool • Exercise room • Whirlpool • Golf (nearby) • Tennis (nearby) • Massage therapy • Full service spa located in the Copley Place Mall

ATTRACTIONS

Trolley tours from hotel • Boston Harbor Tours • Duck Tours • Beacon Hill • Symphony Hall • Freedom Trail • Museum of Science • U.S.S. Constitution • New England Aquarium • Hynes Convention Center • Fenway Park (Boston Red Sox) • TD Garden (Celtics & Bruins) • Museum of Fine Arts • JFK Library • Lexington/Concord • Harvard University • Northeastern University • Boston University • MIT

GUEST SERVICES

Tour desk • Concierge lounge • Car rental desk • Notary Public • Gift Shop • Taxi service • 24-hour room service • Safe deposit boxes • Dry cleaning/laundry • Handicapped accessible facilities • Self parking and valet parking • Full service Business Center • Baby-sitting • Connected to more than 200 shops and restaurants • Commercial airport limousine service • Wireless Internet access available in all public spaces

MEETING FACILITIES

A total of 45 meeting rooms with over 70,000 sq.ft. of meeting and exhibit space • 16,000 sq.ft. of pre-function space • 23,431 sq.ft. Grand Ballroom divisible into 11 sections, accommodates up to 3,640 for receptions and 1,990 for banquets • Ballroom features \$1 million digital lighting and sound systems, superior wireless and wired capabilities and fiber optic cabling • 34 additional meeting rooms from 500 to 1,500 sq.ft. each • 22,500 sq.ft. Back Bay Conference and Exhibition Center accommodates 124 booths and breaks down into six mid-size meeting rooms ranging from 900 to 2,000 sq.ft. • All meeting space wired with T-3 lines for Internet access • Wireless Internet access also available

HIGH TECH MEETS HIGH STYLE IN BOSTON'S BACK BAY.



BOSTON MARRIOTT COPLEY PLACE

110 Huntington Avenue
Boston, Massachusetts 02116
Phone 617-236-5800
Fax 617-236-5885
CopleyMarriott.com

Bring your event to the heart of Boston, where the pulse of the city is felt in every step. At the Boston Marriott Copley Place, everything you need for a fantastic event is literally at your feet—including a covered skywalk that connects you to two great malls and the Hynes Convention Center. Your group will love being minutes from Boston Common, Newbury Street, Fenway Park, Symphony Hall, the Museum of Fine Arts and everything else that makes a meeting in Boston so memorable. Give us your grandest vision; we have 70,000 square feet of beautiful event space to make it happen. Think high tech. Think high style. But don't think of taking your meeting anywhere else.

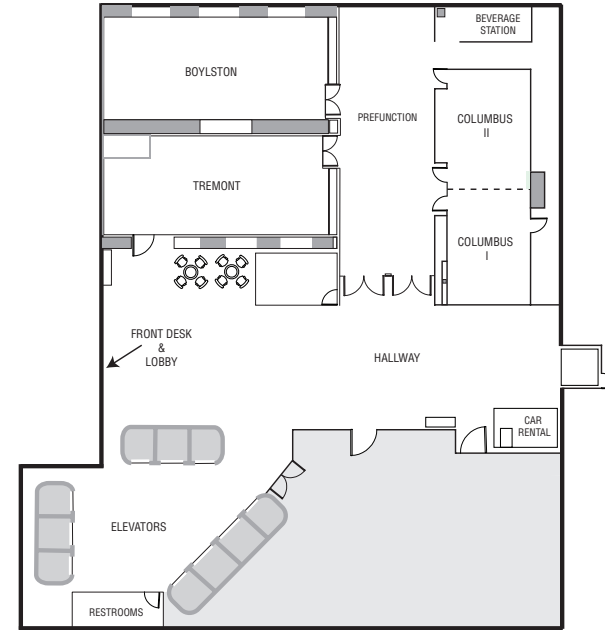
BOSTON MARRIOTT COPLEY PLACE

110 Huntington Avenue
Boston, Massachusetts 02116
Phone 617-236-5800
Fax 617-236-5885
CopleyMarriott.com

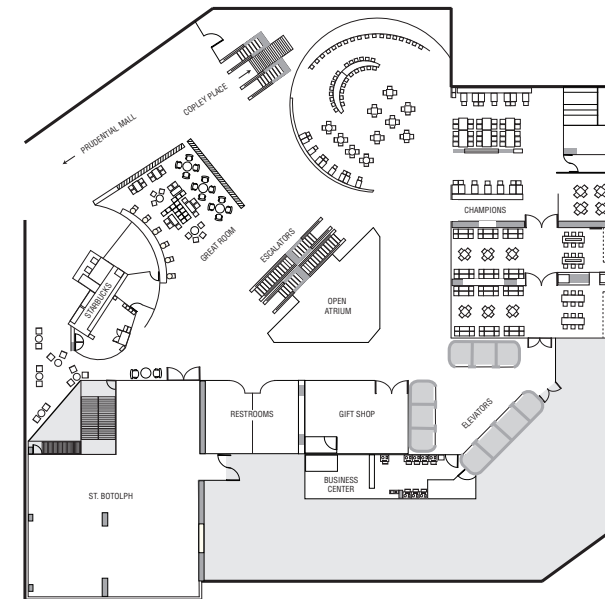
| Meeting Room | Dimensions | | Capacity | | | | | |
|---|-------------|---------|----------|------------|------------|---------|-----------|---------|
| | WxLxH | Sq. Ft. | Theater | Schoolroom | Conference | U-Shape | Reception | Banquet |
| Boylston | 55x23x12 | 1,265 | 160 | 87 | 48 | 40 | 125 | 100 |
| Columbus I & II | 46x17x12 | 880 | - | - | - | 32 | 50 | 40 |
| Columbus I | 23x17x12 | 390 | - | - | 16 | 16 | 25 | 20 |
| Columbus II | 23x17x12 | 390 | - | - | 16 | 16 | 25 | 20 |
| Tremont | 55x23x12 | 1,265 | 160 | 87 | 48 | 40 | 125 | 100 |
| St. Botolph | | 2,244 | - | - | - | - | 250 | 180 |
| Conference Room | 59x24x12 | 1,416 | 150 | 96 | 50 | 40 | 160 | 120 |
| Lounge | 36x23x12 | 828 | - | - | - | - | 90 | 60 |
| Suffolk | 24x52x8.5 | 1,203 | 120 | 80 | 40 | 36 | 125 | 90 |
| Wellesley | 24x52x8.5 | 1,238 | 120 | 80 | 40 | 36 | 125 | 90 |
| Tufts | 20x26x8.9 | 558 | 50 | 26 | 24 | 20 | 40 | 30 |
| Simmons | 23x54x8.5 | 1,166 | 120 | 80 | 40 | 36 | 125 | 90 |
| Boston University | 20x22x8.9 | 440 | 40 | 24 | 18 | 16 | 40 | 30 |
| Regis (conference) | 23x37x8.9 | 1,482 | 70 | 50 | 32 | 32 | 100 | 90 |
| Regis (lounge) | 23x24x8.9 | | | | | | | |
| MIT | 21x23x8.9 | 502 | 44 | 28 | 22 | 20 | 30 | 30 |
| Harvard | 23x28x7.8 | 644 | 50 | 30 | 20 | 20 | 50 | 40 |
| Brandeis | 21x25x7.66 | 502 | 44 | 28 | 22 | 20 | 40 | 30 |
| Northeastern | 22x24x7.66 | 534 | 44 | 28 | 22 | 20 | 40 | 30 |
| Third Floor Atrium Lounge | | 1,320 | - | - | - | - | 170 | 120 |
| Third Floor Atrium & Lounge | | | | | | | 350 | 220 |
| Back Bay Conference and Exhibition Center | 153x111x8 | 22,500 | - | - | - | - | - | 1,400 |
| Arlington | 33x54x8.5 | 1,790 | 140 | 90 | 48 | 40 | 150 | 120 |
| Berkeley | 33x27.4x8.4 | 900 | 80 | 50 | 36 | 26 | 70 | 60 |
| Clarendon | 33x27.4x8.4 | 900 | 80 | 50 | 36 | 26 | 70 | 60 |
| Dartmouth | 33x27.4x8.4 | 900 | 80 | 50 | 36 | 26 | 70 | 60 |
| Exeter | 33x27.4x8.4 | 900 | 80 | 50 | 36 | 26 | 70 | 60 |
| Fairfield | 33x27.4x8.4 | 900 | 80 | 50 | 36 | 26 | 70 | 60 |
| Gloucester | 76x138x8 | 10,500 | - | - | - | - | 750 | 700 |

| Meeting Room | Dimensions | | Capacity | | | | | |
|----------------------------|------------|---------|----------|------------|------------|---------|-----------|---------|
| | WxLxH | Sq. Ft. | Theater | Schoolroom | Conference | U-Shape | Reception | Banquet |
| Grand Ballroom | 108x221x21 | 23,431 | 3,138 | 1,866 | - | - | 3,640 | 1,990 |
| Salon A | 23x31x14 | 676 | 70 | 36 | 28 | 22 | 50 | 40 |
| Salon B | 29x31x14 | 945 | 100 | 48 | 40 | 30 | 90 | 70 |
| Salon C | 29x31x14 | 941 | 100 | 48 | 40 | 30 | 90 | 70 |
| Salon D | 23x31x14 | 662 | 70 | 36 | 28 | 22 | 50 | 40 |
| Salon E | 52x108x21 | 5,518 | 650 | 400 | - | - | 500 | 450 |
| Salon F | 56x108x21 | 6,027 | 650 | 400 | - | - | 500 | 480 |
| Salon G | 51x108x21 | 5,508 | 650 | 400 | - | - | 500 | 450 |
| Salon H | 23x31x14 | 662 | 70 | 36 | 28 | 22 | 50 | 40 |
| Salon I | 29x31x14 | 945 | 100 | 48 | 40 | 30 | 90 | 70 |
| Salon J | 29x31x14 | 945 | 100 | 48 | 40 | 30 | 90 | 70 |
| Salon K | 23x31x14 | 676 | 70 | 36 | 28 | 22 | 50 | 40 |
| AB/CD/HI/JK | 52x31x14 | 1,612 | 160 | 90 | - | - | 165 | 120 |
| Nantucket | 20x29x8.9 | 569 | 50 | 26 | 24 | 20 | 40 | 30 |
| Hyannis | 20x21x8.9 | 465 | 40 | 24 | 18 | 16 | 40 | 30 |
| Provincetown | 22x53x8.9 | 1,166 | 120 | 80 | 40 | 36 | 125 | 90 |
| Orleans | 22x24x8.9 | 532 | 50 | 26 | 24 | 20 | 40 | 40 |
| Falmouth | 17x27x8.9 | 443 | 38 | 21 | 20 | 18 | 30 | 30 |
| Vineyard | 26x41x8.9 | 866 | 70 | 44 | 26 | 24 | 50 | 50 |
| Yarmouth | 24x25x8.9 | 588 | 50 | 26 | 24 | 20 | 40 | 40 |
| Vineyard/Yarmouth | 41x51x8.9 | 1,454 | - | - | - | - | 100 | 70 |
| Maine (conference) | 23x18x8.9 | 750 | 60 | 30 | 20 | 18 | 40 | 40 |
| Maine (lounge) | 18x18x8.9 | | | | | | | |
| New Hampshire (conference) | 23x23x8.9 | 907 | 70 | 34 | 28 | 18 | 50 | 40 |
| New Hampshire (lounge) | 14x24x8.9 | | | | | | | |
| Vermont (conference) | 20x26x8.9 | 1,047 | 90 | 60 | 30 | 24 | 60 | 60 |
| Vermont (lounge) | 17x27x8.9 | | | | | | | |
| Massachusetts | 20x29x8.9 | 520 | 50 | 26 | 24 | 20 | 40 | 30 |
| Rhode Island | | | - | - | - | 8 | - | - |
| Connecticut | | | - | - | - | 10 | - | - |

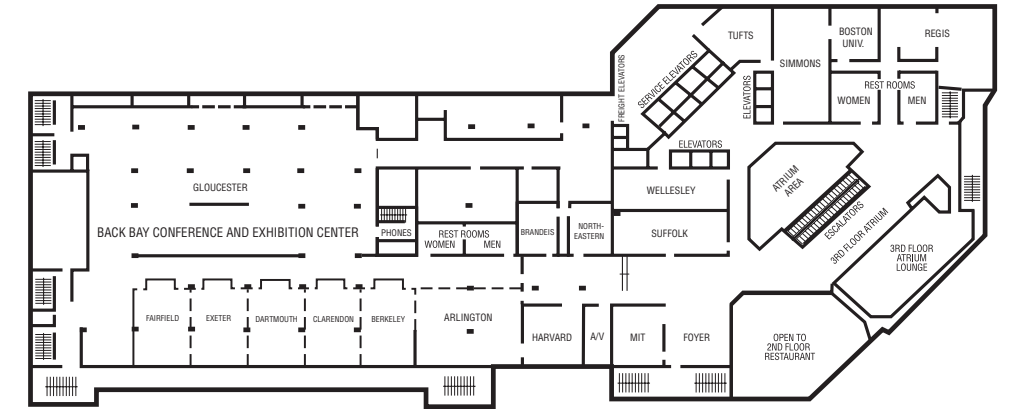
FIRST FLOOR



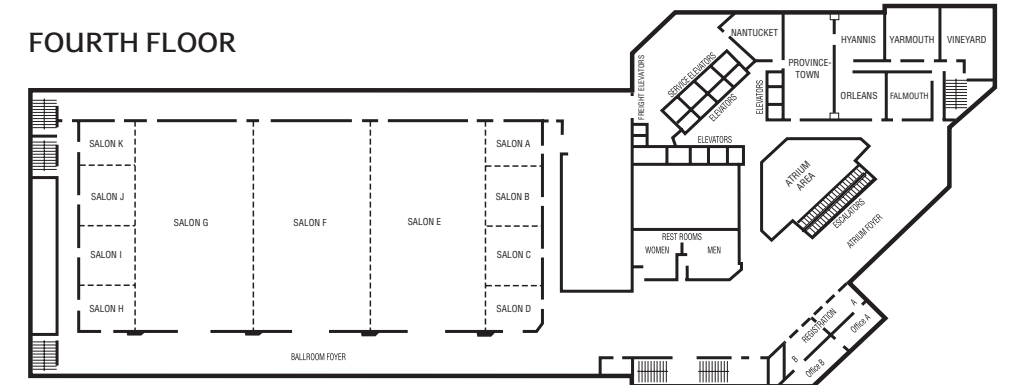
SECOND FLOOR



THIRD FLOOR



FOURTH FLOOR



FIFTH FLOOR

