

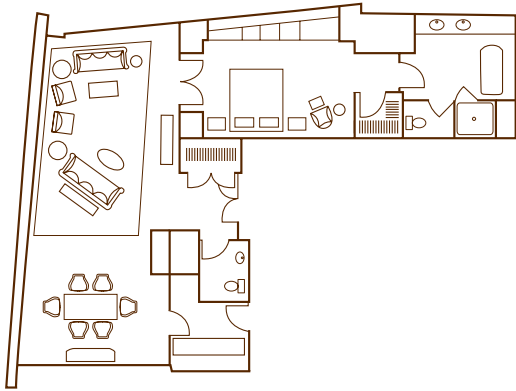


MAKING A SPLASH ON BOSTON'S WATERFRONT

Venture outside the ordinary with the Renaissance Boston Waterfront Hotel. Located in Boston's vibrant Seaport District, this exclusive destination features seven contemporary suite types with breathtaking ocean vistas, water-inspired décor, and luxurious amenities. Indulge in modern-farm cuisine at 606 Congress restaurant, take a dip in our indoor lap pool, or re-energize at our fitness center with spa treatment rooms. When you're ready to explore, enjoy easy access to such famed attractions as the Institute of Contemporary Art, Faneuil Hall, and the Boston Harbor Islands.

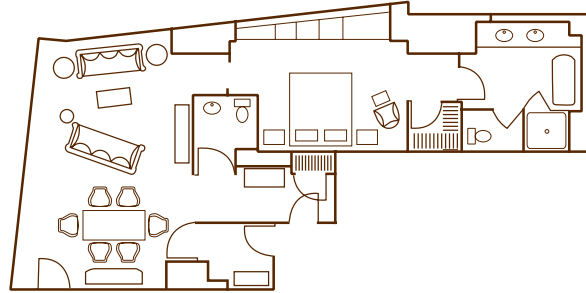
RENAISSANCE BOSTON WATERFRONT HOTEL
606 Congress Street • Boston, Massachusetts 02210
t: 617.338.4111 f: 617.338.4138 • renaissanceboston.com

R
RENAISSANCE®
BOSTON WATERFRONT HOTEL



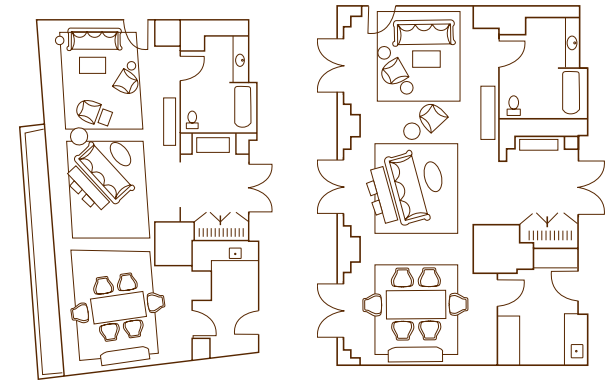
PRESIDENTIAL SUITE (1 Available/Floor 21)

650 sq. ft. parlor with living area including sofa bed and dining table for 6 | Amazing ocean and city views | Reception capacity for 35 | Half bathroom in parlor area | 42" HDTV with connectivity panel for laptops and MP3 players | Full bar with sink, mini refrigerator and separate service entrance | Wireless Internet access | Attached king bedroom | Master bath with sunken tub, shower and double sinks | 1 additional connecting bedroom available



VICE-PRESIDENTIAL SUITE (3 Available/Floors 18, 19 & 20)

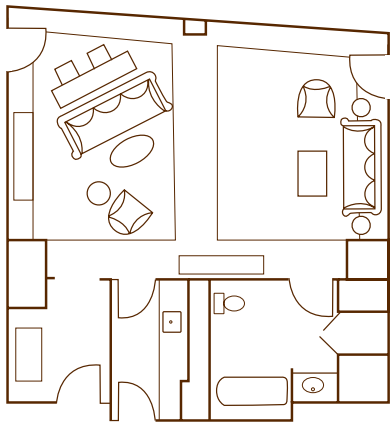
400 sq. ft. parlor with dining table for 6 and comfortable living area with sofa bed | Reception capacity for 20 | Half bathroom in parlor area | 42" HDTV with connectivity panel for laptops and MP3 players | Full bar with sink, mini refrigerator and separate service entrance | Wireless Internet access | 1 connecting king bedroom | Master bath with sunken tub, shower and double sinks | Sweeping harbor and city views | 1 additional connecting bedroom available



Suites available with and without patio access.

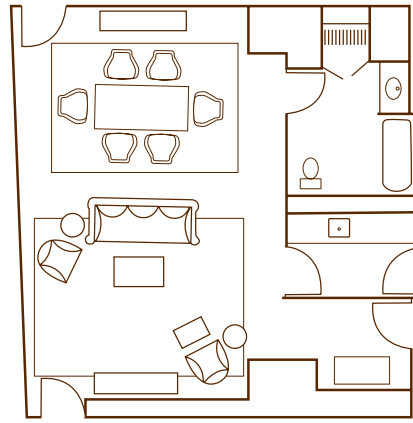
3-BAY HOSPITALITY SUITE (2 Available/Floors 5 & 12)

650 sq. ft. parlor with living area including sofa bed and dining table for 6 | 5th Floor suite has 300 sq. ft. walk-out patio overlooking eco-friendly garden | 12th Floor suite has breathtaking ocean views | Reception capacity for 35 | Full bar with sink, mini refrigerator and separate service entrance | Full bathroom | 42" HDTV with connectivity panel for laptops and MP3 players | Wireless Internet access | 1 connecting king bedroom | 1 additional connecting bedroom available



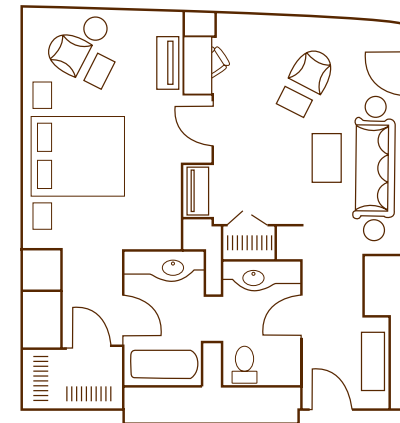
2-BAY HOSPITALITY SUITE (4 Available/Floors 5 & 15)

400 sq. ft. parlor with living area including sofa bed | Reception capacity for 20 | Full bar with sink, mini refrigerator and separate service entrance | Full bathroom | 42" HDTV with connectivity panel for laptops and MP3 players | Wireless Internet access | Dramatic harbor views | 1 connecting king bedroom | 1 additional connecting bedroom available (on most suites)



LUXURY SUITE (3 Available/Floors 17, 19 & 21)

400 sq. ft. parlor with sofa bed and dining table for 6 | Reception capacity for 20 | Full bar with sink, mini refrigerator and separate service entrance | Full bathroom | 42" HDTV with connectivity panel for laptops and MP3 players | Wireless Internet access | Stunning harbor views | 1 connecting king bedroom | 1 additional connecting bedroom available



DELUXE KING SUITE (8 Available/Floors 6 through 11)

200 sq. ft. parlor with sofa bed | Mini refrigerator | Full bathroom | 42" HDTV with connectivity panel for laptops and MP3 players | Wireless Internet access | Spectacular city views | 1 connecting king bedroom | 1 additional connecting bedroom available