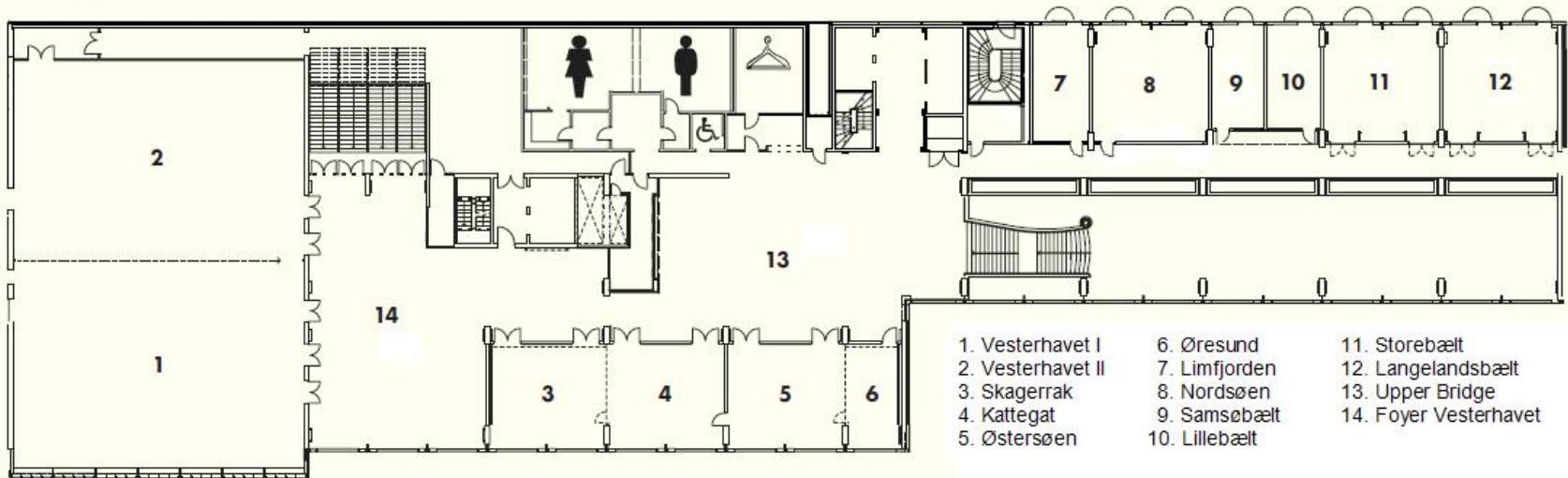


## Floorplan



	Room	Square Meters	Square Feet	Size in meters	Height	Theatre Style	Class Room	Board Room	U-Shape	Round Tables	Cabaret
1	Vesterhavet I	260	2802	19.4 x 13.5	4.25/4.75	300	150	-	60	200	120
2	Vesterhavet II	260	2802	19.4 x 13.5	4.25/4.75	300	150	-	60	200	120
	Vesterhavet I & II	520	5602	19.4 x 27	4.25/4.75	600	360	-	120	400	250
3	Skagerrak	50	535	7.6 x 6.6	3.40/3.75	48	27	20	24	40	32
4	Kattegat	50	535	7.6 x 6.6	3.40/3.75	48	27	20	24	40	32
	Skagerrak & Kattegat	100	1070	15 x 6.6	3.40/3.75	96	60	42	54	80	48
5	Østersøen	50	535	7.6 x 6.6	3.40/3.75	48	27	20	24	40	32
6	Øresund	23	249	3.5 x 6.6	3.40/3.75	20	9	15	-	16	-
	Østersøen & Øresund	73	784	11 x 6.6	3.40/3.75	68	36	27	30	60	40
7	Limfjorden	25	267	3.2 x 7.3	2.64/2.92	20	9	15	-	16	-
8	Nordsøen	58	622	7.6 x 7.6	2.90/2.90	54	30	20	27	40	24
9	Samsøbælt	25	267	3.7 x 6.7	3.40/3.75	20	9	15	-	16	-
10	Lillebælt	25	267	3.7 x 6.7	3.40/3.75	20	9	15	-	16	-
11	Storebælt	58	622	7.6 x 7.6	3.40/3.75	48	27	19	24	40	24
12	Langlandsbælt	58	622	7.6 x 7.6	3.40/3.75	48	27	19	24	40	24
	Wine room	23	247	7.2 x 3.3	3.00/3.00	-	-	14	-	-	-
	Cattle room	98	1054	8.5 x 11.5	3.14/3.14	45	26	22	20	35	20
	Porterhouse	21	226	2.9 x 7.5	3.16/3.16	-	-	15	-	-	-