

Experience the perfect place to  
**meet with success**

**Marriott**  
NEWARK LIBERTY  
INTERNATIONAL AIRPORT

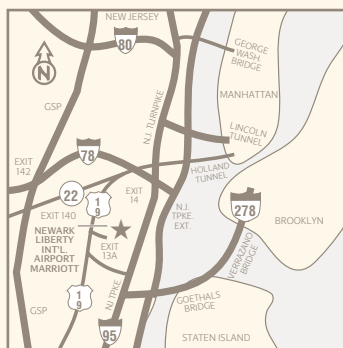


IT'S THE MARRIOTT WAY.™

# Newark Liberty International Airport Marriott

Newark Liberty International Airport • Newark, NJ 07114  
Telephone (973) 623-0006 • Fax (973) 504-6199

[www.NewarkAirportMarriott.com](http://www.NewarkAirportMarriott.com)



## Directions

From Newark Liberty International Airport:  
On premises, opposite Terminal B.

From New Jersey Turnpike:  
Use Exit 14 or 13A (Newark Airport), follow signs for main terminals. Watch for hotel directional signs.

## Location

The only hotel located on the airport premises • Minutes from I-78, I-95 and the Garden State Parkway • 15 miles from New York City

## Accommodations

591 guest rooms • 6 suites • Concierge Level and Lounge • Nonsmoking and accessible rooms • Two telephones with dataports and voice mail • High-speed Internet access • Cable TV with in-room pay movies • Individual climate control • AM/FM alarm clock radio • In-room coffee maker, hair dryer, iron and ironing board

## Restaurants & Lounges

Allie's American Grille featuring casual dining for breakfast, lunch and dinner • Chatfield's English Pub • JW Prime Steakhouse open for dinner • Starbucks® coffee

## Facilities & Services

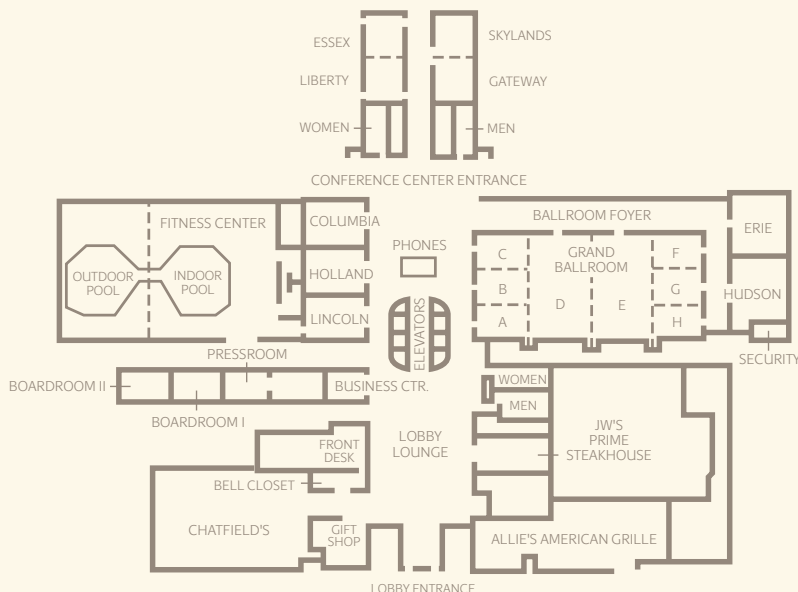
Complimentary airport shuttle service • Wired-for-Business® in-room technology package available • Wireless hot spots in lobby and meeting rooms • Fitness center with sauna, whirlpool and exercise equipment • Connecting indoor/outdoor pool • Concierge • Valet parking • Gift shop • Safe-deposit boxes • Full business center • Room service • Laundry valet • Shoe shine • Hertz rental car desk

## Meeting Facilities

20 meeting rooms with newly renovated 13,000 square feet of banquet and conference space, conveniently located on one level • 6,264 sq.-ft. Grand Ballroom, divisible into eight sections, accommodates up to 700 for receptions and 500 for banquets • Teleconferencing, video conferencing • Outside tent space upon request

## Attractions

Meadowlands Sports Complex • New Jersey Performing Arts Center • Newark Museum of Fine Arts • Liberty Science Center • The Mall at Short Hills • Jersey Gardens Outlet Mall • Statue of Liberty • Manhattan and Downtown Financial Center • Loews Movie Theater • Rexplex Sports Center



Meeting Rooms	Dimensions W x L x D	Square Footage	Capacity					
			Theater	Schoolroom	Conference	U-Shape	Reception	Banquet
Grand Ballroom	116x54x14	6,264	500	275	-	-	700	500
Salons A, B, C, F, G, H (each)	26x18x14	468	40	22	15	15	30	30
Salons D & E (each)	32x54x14	1,728	200	100	45	40	200	140
Salons A, B & C (combined)	26x54x14	1,404	150	70	35	35	150	80
Salons F, G & H (combined)	26x54x14	1,404	150	70	35	35	150	80
Salons D & E (combined)	64x54x14	3,456	350	180	-	60	400	260
Salons A & D or E & H	58x54x14	3,132	300	155	-	-	350	200
Columbia, Holland, Lincoln (each)	30x24x9	720	60	30	20	22	45	40
Erie, Hudson (each)	32x21x10	672	60	22	15	15	40	40
Columbia, Holland, Lincoln (combined)	30x72x9	2,160	180	90	35	40	180	150
Erie, Hudson (combined)	32x42x10	1,344	100	50	35	30	100	70
Pressroom	25x20x9	500	40	20	15	15	30	30
Boardroom I	20x12x9	240	20	-	8	-	-	8
Boardroom II	20x12x9	240	20	-	8	-	-	8
Liberty, Essex (each)	25x25x10	625	50	22	15	15	40	40
Skylands, Gateway (each)	25x25x10	625	50	22	15	15	40	40
Liberty, Essex (combined)	25x50x10	1,250	100	42	35	30	80	70
Skylands, Gateway (combined)	25x50x10	1,250	100	42	35	30	80	70
Ballroom Foyer	116x16	-	-	-	-	-	-	-
West Lobby	28x30	-	-	-	-	-	-	-

For information, call us direct at (973) 623-0006, your travel agent, or toll-free in the United States and Canada: 1-800-228-9290. (Travel agents only call: 1-800-831-1000.)

**GLOBAL SALES ORGANIZATION OFFICES (USA)**  
California (310) 337-0300, facsimile (310) 649-4402  
Connecticut (203) 291-8900, facsimile (203) 222-7604  
District of Columbia (202) 328-2943, facsimile (202) 328-2933  
Georgia (770) 541-4520, facsimile (770) 988-958  
Illinois (847) 318-1250, facsimile (847) 318-0523  
New Jersey (732) 302-5200, facsimile (732) 302-5258  
New York (212) 629-0589, facsimile (212) 629-0070

Pennsylvania (610) 521-8150, facsimile (610) 521-2747  
Virginia (703) 442-0440, facsimile (703) 356-6519

**OUTSIDE THE USA**  
Argentina 5411 4318 3053, facsimile 5411 4318 3071  
Asia/Pacific 852 2192 6048, facsimile 852 2192 6100  
Australia 61 2 9251 5338, facsimile 61 2 9251 7744  
Austria 43 151 26213, facsimile 43 151 26215

Brazil 5511 3069 3008, facsimile 5511 3069 3325  
Canada (416) 213-8114, facsimile (416) 213-9294  
China (Beijing) 8610 6597 8916, facsimile 8610 6597 8918  
China (Shanghai) 8621 6237 6384, facsimile 8621 6237 6371  
France 33 144 43 5401, facsimile 33 144 43 5576  
Germany 49 69 79 55 2000, facsimile 49 69 77 95 60  
Italy 390 2 80 43 68, facsimile 390 2 80 48 50  
Japan (Osaka) 81 6 6367 3700, facsimile 81 6 6367 3701

Japan (Tokyo) 81 3 5405 1770, facsimile 81 3 5472 4500  
Latin America, Caribbean (305) 670-7440, fax (305) 671-2699  
Mexico 525 55 208 1000, facsimile 525 55 511 1581  
Middle East, Africa, Subcontinent (Dubai) 971 4 2651 756, facsimile 971 4 2651 870  
Singapore 65 6831 4713, facsimile 65 6831 4718  
Spain 34 93 272 1407, facsimile 34 93 488 1298  
United Kingdom 44 20 7591 1131, facsimile 44 20 7591 1148

© Marriott International 2004