

## **Courtyard by Marriott Phuket at Patong Beach**

Courtyard by Marriott Phuket at Patong Beach offers 390 guestrooms in the heart of Patong, a short walk from the beach, the resort's exclusive Beach Club and the town's lively entertainment and shops. Ideal for couples or family holidays, the resort features a rooftop pool bar, with stunning views over Patong Beach and a second pool with a swim up pool bar, located in the centre of the hotel. Hard Rock Café, Kids World and Siam Adventure Club are located on site.



**Hotel Exterior**



**Hotel Lobby**

**Opening:** December 20, 2008

**Location:** 48 Ruam Jai Road, Patong Beach,  
Patong Phuket 83150 Thailand

**Telephone:** +66 7633 7000

**Fax:** +66 7633 7003

**Reservation:** +66 7630 3300

**Reservation Fax:** +66 7630 3362

**Email:** [courtyardresort.reservation@courtyard.com](mailto:courtyardresort.reservation@courtyard.com)

**Website:** [courtyardmarriottpatong.com](http://courtyardmarriottpatong.com)

**Management:** Marriott International

**General Manager:** Mr. Theera Kanjana

**Cluster Director of Sales:** Mr. Prawate Khumchart

**Architect:** RMJM

**Interior Design:** DWP Co., Ltd.

**Landscape Architects:** Green Architect

### **Attractions:**

- Patong Beach (just 100 meters away)
- Jungceylon Shopping Mall (within walking distance)
- Soi Bangla nightlife
- Simon Cabaret
- Local markets
- Phuket FantaSea in Kamala
- Hard Rock Café in the hotel complex

### **Directions:**

Located 40 kilometres southwest of Phuket International Airport, the resort is reached by taking Highway 402 towards Phuket Town, and then turning right onto Highway 4020. A one-way taxi fare from Phuket International Airport is about THB700.



**Deluxe Room**

**Accommodations:**

Decorated in warm and vibrant colours, each of Courtyard by Marriott Phuket at Patong Beach's 390 spacious guestrooms across five categories feature bedding with luxuriant linens and soft down feather pillows, large work areas with high-speed internet access, in-room safes, tea and coffee facilities and satellite TVs. Connecting rooms are available on all floors, Premier Rooms offer private balconies and deep tubs highlight the Executive Suites.

**Deluxe Rooms**

Vibrant décor characterise these 32-square-metre, well-appointed rooms with king-size or two double beds, which open to garden views. (238 rooms)

**Premier Rooms**

The natural colours of these well-furnished 42-square-metre rooms' décor present a soothing atmosphere with floor-to-ceiling glass windows opening to private balconies. (113 rooms)

**Premier Pool Access Rooms**

These comfortable, relaxing 40-square-metre rooms open to the poolside and offer well-lit settings decorated in soothing natural tones. (13 rooms)



**Swimming Pool**

**Studio Suites**

Decorated in soft, natural tones, these 48-square-metre suites come in a choice of layouts, and feature spacious bathrooms with deep terrazzo tubs. (16 rooms)

**One-Bedroom Suites**

Opening to a private balcony, these spacious 64-square-metre suites offer separate bedrooms with king-size beds and airy living rooms. (10 rooms)



**Courtyard Service**



Kids World-Play Station Zone



Teen Zone



Siam Adventure Club

## Highlights of Courtyard by Marriott Phuket at Patong Beach

### Guestroom Amenities:

- King-size or double beds
- Large safe
- Refrigerator
- Iron and ironing board
- Individual temperature control
- Tea and coffee making facilities
- High-speed internet access
- 32-inch flat-screen, satellite TV
- DVD player
- Alarm clock
- Hairdryer
- Bottled water

### Facilities and Services:

- Siam Adventure Club tour desk
- Newspapers
- Wireless internet in public areas
- Swimming pools on the 3rd and 7th floors
- 24-hour security
- Fitness Center on the 7th floor
- MoMo 2 You (room service delivery)
- Transportation desk

### Kids World:

The resort offers a variety of amusements and entertainment in the Play Zone for pre-teens and Teen Zone for youngsters:

#### **Teen Zone (13-18 years)**

- Internet corner
- Sony PlayStation<sup>®</sup> area
- Pool table and table soccer

#### **Play Zone (4-12 years)**

- Cushioned ball-house
- Arts and crafts corner
- Princess dress up area
- Movie theatre
- Babysitting service
- Baby cots

Opening hours: 10:00 - 18:00



MoMo Café

**Siam Adventure Club:**

Step away from the average tours and let the resort's Siam Adventure Club team recommend unforgettable island adventures and fun indoor activities. Check at their tour desk for all the options.

Opening hours: 24 hours

**Dining Options:**

**MoMo Café**

Begin your day with a sumptuous and healthy breakfast buffet with western and Asian selections and fresh, innovative cuisine greeting diners for lunch and dinner in this air-conditioned café.

Opening hours: 06:30 - 23:00

**MoMo 2 Go**

Conveniently located in the lobby, offering freshly baked take-away pastries, a great coffee and tea selection and daily lunch specials, along with a retail market offering beverages, snacks, souvenirs and daily necessities.

Opening hours: 24 Hours

**MoMo 2 You**

Dishes and drinks from all the resort's menus can be delivered to your room around the clock.

Opening hours: 24 hours

**Rooftop Pool Bar**

Enjoy a refreshing soft drink, smoothie, cocktail or a bottle of wine at the Rooftop Pool Bar on the 7<sup>th</sup> floor, which also serves light meals, sandwiches, salads, snacks, pizza and desserts.

Opening hours: 11:00 - 19:00



Food at Momo Café



Rooftop Pool Bar



Hard Rock Café

### Dining Options:

#### **Swim Up Pool Bar**

Sip on a smoothie, shake, soft drink, beer or cocktail while in the water at the third-floor Swim Up Pool Bar, or step out of the pool for a hot-or-cold snack, tasty Thai dish, sandwich, burger, pizza or tempting dessert.

Opening hours: 11:00 - 19:00

#### **Hard Rock Café**

Phuket's only Hard Rock Café, the world-famous music, drinking and dining establishment sits right next to the resort's lobby, and guests of Courtyard by Marriott Phuket at Patong Beach receive discounts on their menu items and merchandise.

Opening hours: 11.00 until late.

### Fitness Centre:

The seventh-floor Fitness Centre features cardiovascular facilities including treadmills, cross trainers, recumbent bikes and weight equipment such as leg extenders, curling machines, multi-press/pull-down machines and dumbbells.

Opening hours: 24 hours



Fitness Centre

### Araya Spa:

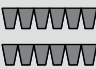
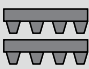
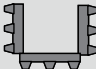

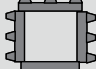
Immerse yourself in a wellness experience in one of Araya Spa's two treatment rooms with personalized packages based on Ayurveda and other ancient philosophies and traditions passed down through the generations.

Opening hours: 10:00 - 22:00



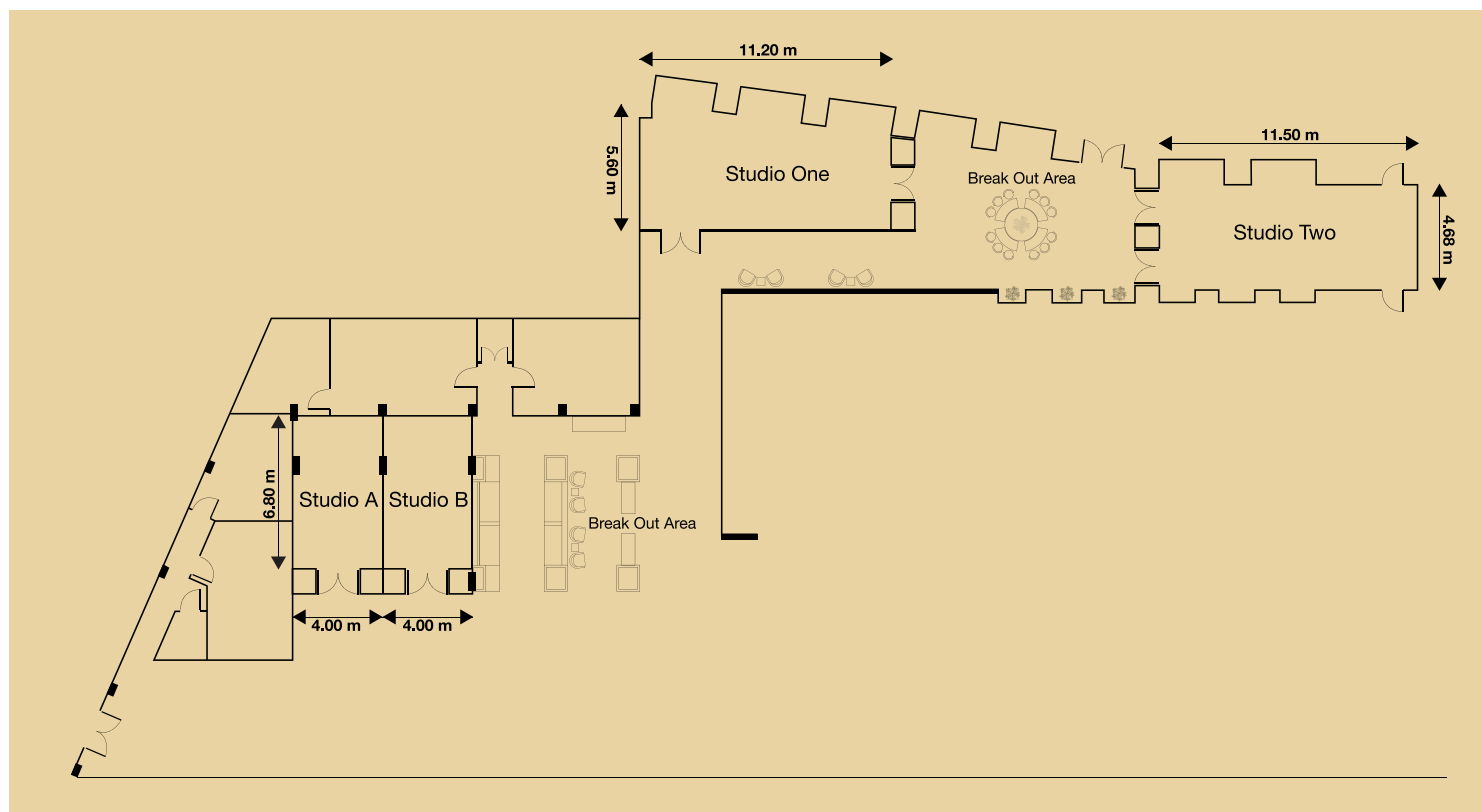
Araya Spa

**Meeting Room Specification:**

Meeting Rooms	Lx Wx H (Meter)	Total area (Sq.m.)	CAPACITY				
			 Theater	 Classroom	 U-shape	 Banquet	 Board room
Studio A	6.80 x 4.00 x 2.40	27					10(fixed)
Studio B	6.80 x 4.00 x 2.40	27					10(fixed)
Studio One	11.20 x 5.60 x 2.20	63	42	24	24	30	24
Studio Two	4.68 x 11.00 x 2.50	51	42	24	24	30	24
<b>Total</b>		<b>168</b>					

Note: A variety of outdoor spaces is also available.

**Meeting Room Floor Plan:**





**Meeting Facilities**

**Meeting Facilities:**

Courtyard by Marriott Phuket at Patong Beach offers two boardrooms and two meeting rooms for social and corporate events to accommodate groups from 10 to 34 persons. The MoMo Café presents an excellent setting for small events and receptions and for meet-and-greets, try MoMo 2 Go.

**Visas to Thailand:**

Visitors to Thailand must possess a passport valid for at least six months upon arrival and proof of onward passage. Visa requirements are determined by nationality. Nationals of the United Kingdom, Australia, New Zealand, USA, Canada, Singapore, Japan and Malaysia do not require visas for stays of up to 30 days. Visitors from other countries should consult their local Thai consulate for visa requirements.

**Contact Information:**

**Name:** Mr. Prawate Khumchart  
**Position:** Cluster Director of Sales  
**E-Mail:** prawate.k@courtyard.com  
**Address:** Piya Place Langsuan Building, 15th Floor,  
 29/1 Soi Langsuan, Ploenchit Road, Lumpini, Pathumwan, Bangkok 10330 Thailand  
**Telephone:** +66 2652 0902  
**Fax:** +66 2652 0903  
**Mobile:** +66 8180 33900

**Hotel Map:**

