

BUSINESS DAYS, LEISURE NIGHTS



**Courtyard by Marriott®
Phuket at Patong Beach**

48 Ruam Jai Road, Patong Beach
Patong, Phuket 83150 Thailand
T +66 7633 7000 F +66 7633 7003
Reservations: +66 7633 7000
Email: courtyardresort.reservation@courtyard.com
Website: courtyardmarriottpatong.com



Courtyard by Marriott Phuket at Patong Beach

Situated in the heart of the island's entertainment center, just a short walk from the legendary Patong Beach and the resort's exclusive Beach Club, this is a perennial favorite for small board meetings and MICE programs, as well as social and family gatherings. The hotel offers four stylish meeting rooms, the largest of which can seat 34. The rooftop pool bar with its stunning views of Patong Beach, a second pool with a swim-up pool bar, and the on-site Hard Rock Café, offer teams a choice of vibrant yet relaxing venues in which to get better acquainted.

Directions

Distance from Phuket International Airport: 20kms

Driving Directions: The resort is reached from the airport by taking Highway 402 toward Phuket Town, and then turning right onto Highway 4020.

Arrival Information

- Check-In: 3pm and check-out: 12pm
- Complimentary on-site parking
- Pets not allowed

Hotel Details

- 390 rooms and suites
- 4 function rooms

In-Room Amenities

- Electrical outlet at the desk
- Dual-voltage electrical outlet
- Cordless two-line speaker phone with voice mail
- In-room safe and deposit boxes

Restaurants & Lounges

MoMo Café

An eclectic mix of fine local and international cuisine for breakfast, lunch and dinner.

Rooftop Pool Bar

Healthy drinks, light meals, sandwiches, salads, snacks, pizza and desserts.

Swim-Up Pool Bar

Smoothies, shakes, soft drinks, beer and cocktails in the water and delicious fare on the deck.

Hard Rock Café

The world-famous music, drinking and dining establishment is right next to the lobby.

Take-away Outlets

MoMo 2 Go

The snack bar and convenience kiosk with breakfast, lunch and dinner specialties.

MoMo 2 You

Delicious selections from our full-service restaurants brought to your room.

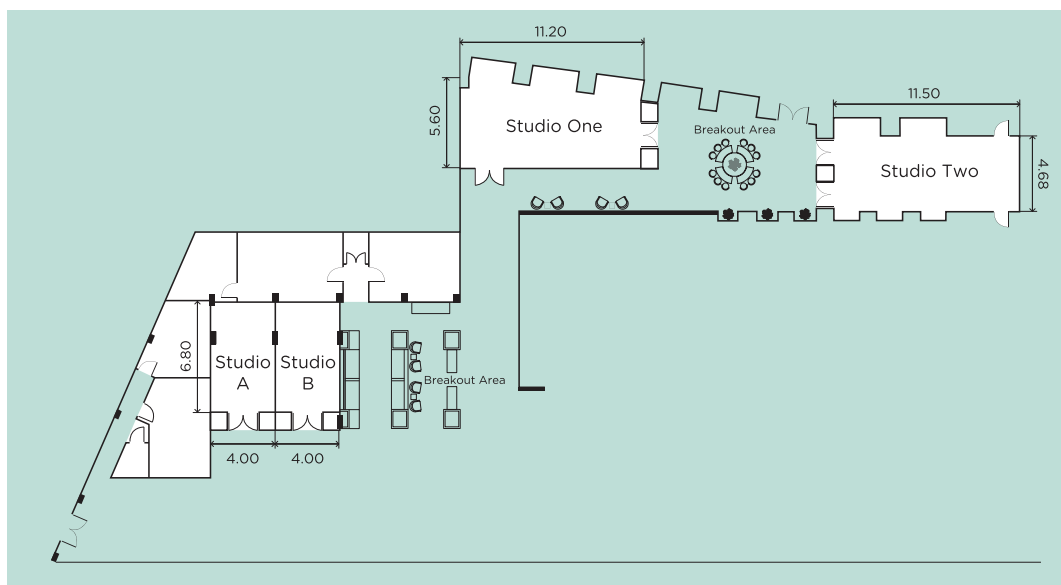
High-Speed Internet Access

Locations and Connectivity

Public Areas: Wireless
Guest Rooms: Wired
Meeting Rooms: Wired and Wireless

Attractions And Landmarks

- Patong Beach (100 meters away)
- Jungceylon Shopping Mall (within walking distance)
- Soi Bangla nightlife
- Simon Cabaret
- Local markets
- Phuket FantaSea (in Kamala)
- Hard Rock Café (in the hotel complex)



Room	Dimensions (W x L x H)	Total Area Sq.m.	Total Area Sq.ft.	Round Tables	Round Table with Staging	Classroom	Theatre Style	Hollow Square	Board Room
Studio A	4.00X6.80X2.40	27	-	-	-	-	-	-	10 (fixed)
Studio B	4.00X6.80X2.40	27	-	-	-	-	-	-	10 (fixed)
Studio One	5.60X11.20X2.20	63	-	30	-	24	42	24	24
Studio Two	11.00X4.68X2.50	51	-	30	-	24	42	24	24

Total meeting space:

168