

## dinner

*served Sunday-Thursday, 5 p.m. – 11 p.m.  
Friday-Saturday, 5 p.m. – midnight*

*Please see our All Day dining menu for  
additional selections.*

*Whole-grain bread or vegetable crudités  
substitute available for bread service upon  
request.*

## starters

- |  |           |
|--|-----------|
| <b>ahi tuna tower</b>  | <b>10</b> |
| <i>seared tuna, avocado, wonton crisps,<br/>pesto aioli and pickled sprout salad</i> |           |
| <b>small field greens or Caesar salad</b>  | <b>5</b>  |

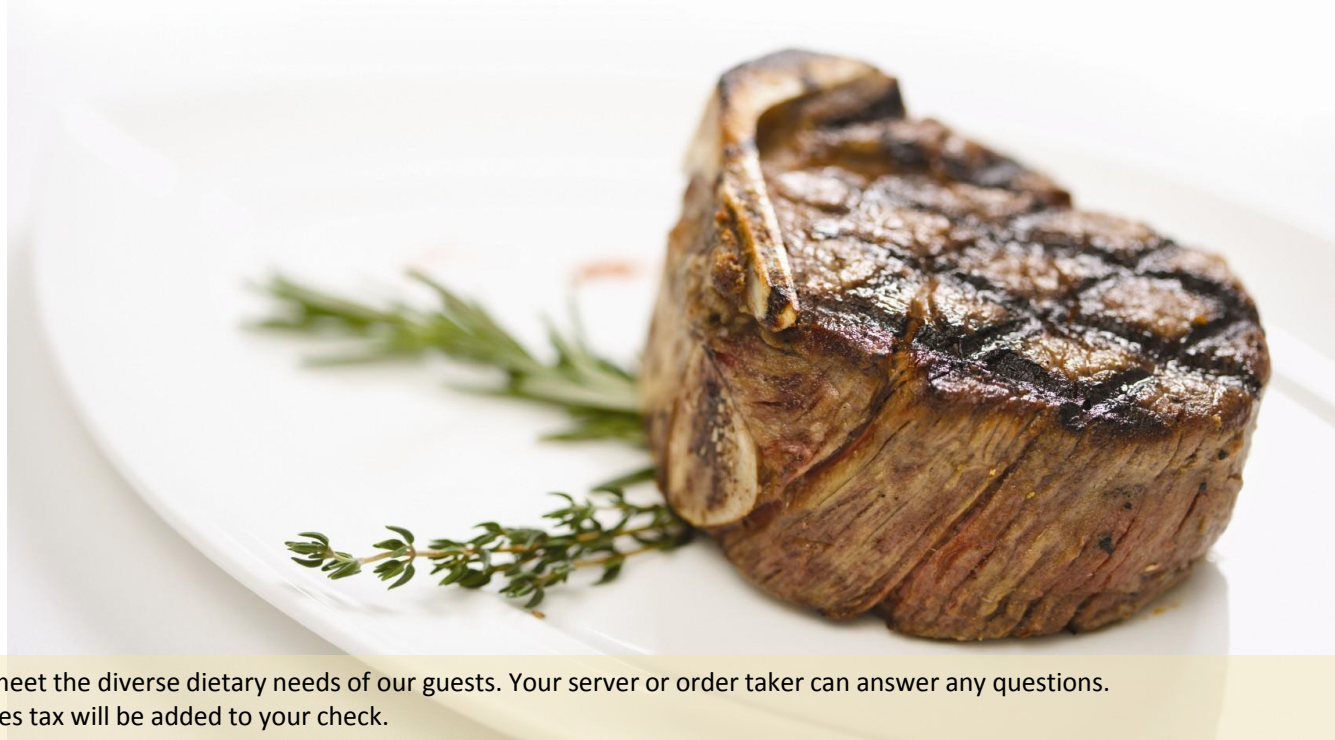


*"Fit For You" items have been selected to meet the diverse dietary needs of our guests. Your server or order taker can answer any questions.  
An 18% service charge and appropriate sales tax will be added to your check.*

## dinner

### entrées

<b>Korean barbecue ribs</b>	<b>18</b>
Korean pickled cucumber, white cabbage Kim Chi; served with steamed rice	
<b>flame grilled petit filet mignon</b>	<b>25</b>
roasted fingerling potatoes, sweet corn, bacon and kalamata olive relish	
<b>flame grilled rib-eye</b>	<b>28</b>
maitre d'hôtel butter, chimichurri and Béarnaise sauces; served with French fries	
<b>osso buco</b>	<b>24</b>
garlic mashed potatoes, tobacco onions, red wine reduction	
<b>grilled sea bass</b>	<b>24</b>
marinated baby artichokes with extra virgin olive oil and tomato relish [carb-conscious]	



“Fit For You” items have been selected to meet the diverse dietary needs of our guests. Your server or order taker can answer any questions. An 18% service charge and appropriate sales tax will be added to your check.