

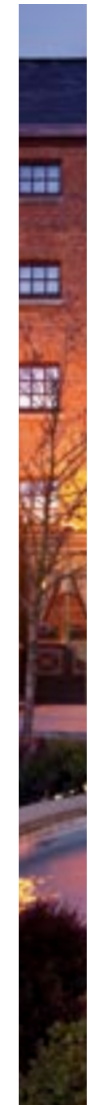
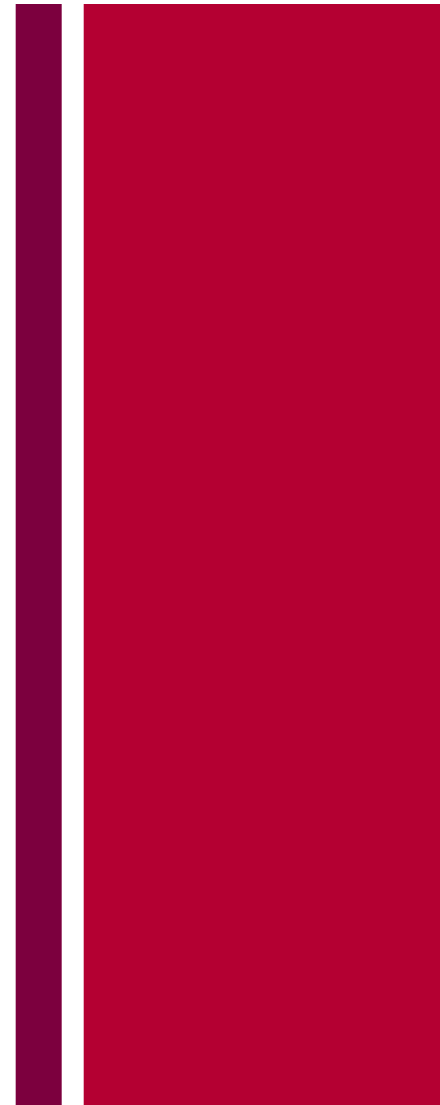
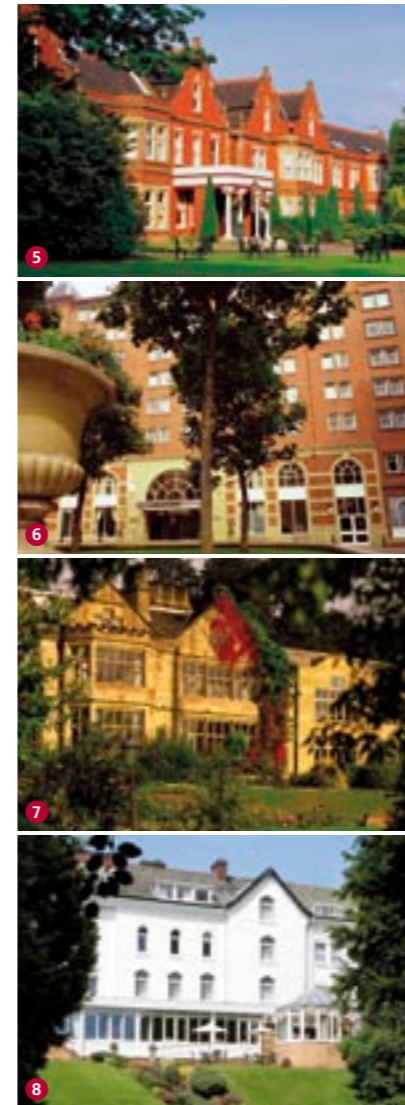
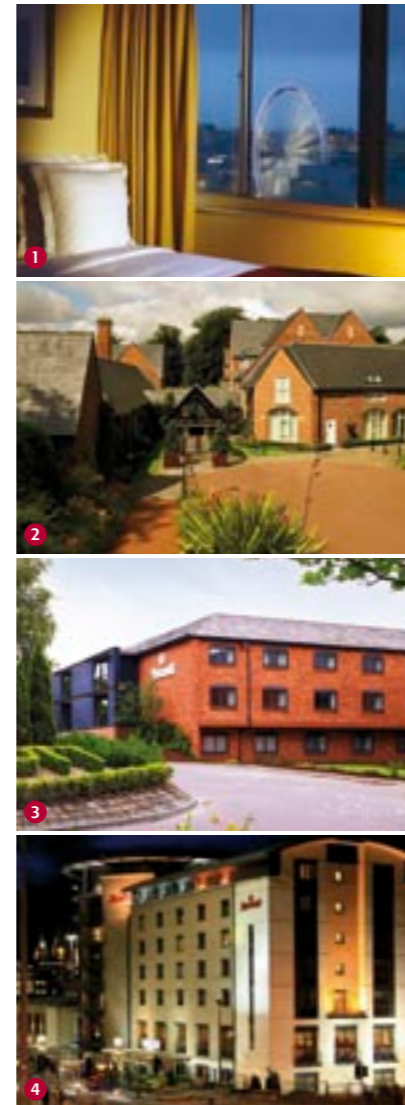
MANCHESTER MARRIOTT VICTORIA & ALBERT

Water Street
Manchester M3 4JQ
Tel 44 (0)161 832 1188
Guest Fax 44 (0)161 834 2484
Conference/Sales Fax 44 (0)161 838 4180
ManchesterMarriottVictoriaandAlbert.co.uk

**ADDITIONAL MARRIOTT HOTELS
IN THE NORTH WEST AND YORKSHIRE**

- | | |
|---|---|
| 1. Renaissance Manchester Hotel ****
Tel 44 (0)161 831 6000 | 5. Preston Marriott Hotel ****
Tel 44 (0)1772 864 087 |
| 2. Worsley Park, A Marriott Hotel & Country Club ****
Tel 44 (0)161 975 2000 | 6. Leeds Marriott Hotel ****
Tel 44 (0)113 236 6366 |
| 3. Manchester Airport Marriott Hotel ****
Tel 44 (0)161 904 0301 | 7. Hollins Hall, A Marriott Hotel & Country Club ****
Tel 44 (0)1274 530 053 |
| 4. Liverpool Marriott Hotel City Centre ****
Tel 44 (0)151 476 8000 | 8. York Marriott Hotel ****
Tel 44 (0)1904 701 000 |

**ORIGINAL. MODERN.
IDEAL FOR A SUCCESSFUL EVENT.**



- 2-3 Getting down to business
- 4-7 Meetings and Events
- 8-9 Restaurant and Bar
- 10-11 Dining at Manchester Victoria and Albert
- 12-13 Your Marriott Bedroom
- 14 Bannatyne's Health Club
- 15 Business Centre
- 16-19 Planning your event

CONTENTS.

THE PLACE TO MEET.

The Manchester Marriott Victoria & Albert Hotel offers warm hospitality in the heart of the city. Blending historic detail with contemporary flair, this former Victorian warehouse sets the scene for clear thinking and relaxation. But that inner city vibe is never far away – we're located just minutes from the Spinningfields business and leisure district, Manchester Central, Deansgate and close to the motorway and Manchester's two main train stations.





**THE PERFECT PLACE
FOR THE PERFECT DAY.**

It's our goal to make your occasion perfect, in every way. From day one you'll be given a dedicated **Event Organiser** to help with all your planning. Our **Red Jacket Event Managers** will take care of every detail on the day – you needn't lift a finger. And to make sure we all share the same goals, we'll agree your **Three Gold Keys** with you – these are your key objectives that will ensure your event is a success.



High-speed wired and wireless internet access. Customised web pages with your logo, maps, agendas and documents. Options for video conferencing, laptop hire and even lighting and stage design. The technology to bring your event to life is here at your request. And to make your event a smooth-running success, a dedicated support team with one point of contact can take away the technical strain.

**CHALLENGE MINDS,
INSPIRE ACTION.**

The Manchester Marriott Victoria & Albert Hotel combines cutting-edge technology with complete relaxation. Here the energy of the city meets a serene setting on the banks of the River Irwell. This unique situation inspires creative thinking, focus and purpose. It's a theme continued inside, with eight state-of-the-art conference rooms, all fully wired with the latest technology.

Our rooms seat up to 260 guests and can be adapted for a wide range of uses. Inspire colleagues with a team-building event. Go global with a high-tech conference. Give awards ceremonies a sense of prestige. We can give your event an added edge of sophistication.



John Logie Baird Suite



Irwell Room

WORLD-CLASS CONNECTIONS.

Choose from our eight conference suites, meeting rooms and boardrooms, carefully designed to accommodate the most spectacular or intimate events. Outstanding business facilities, including a dedicated business centre, high-speed internet access, audio-visual equipment and a concierge service are available.



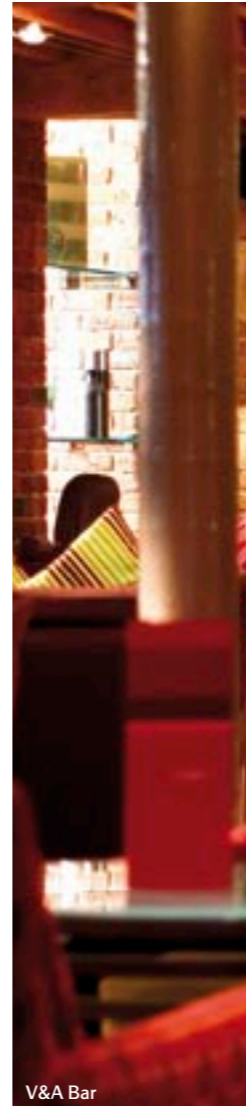
1844 Room



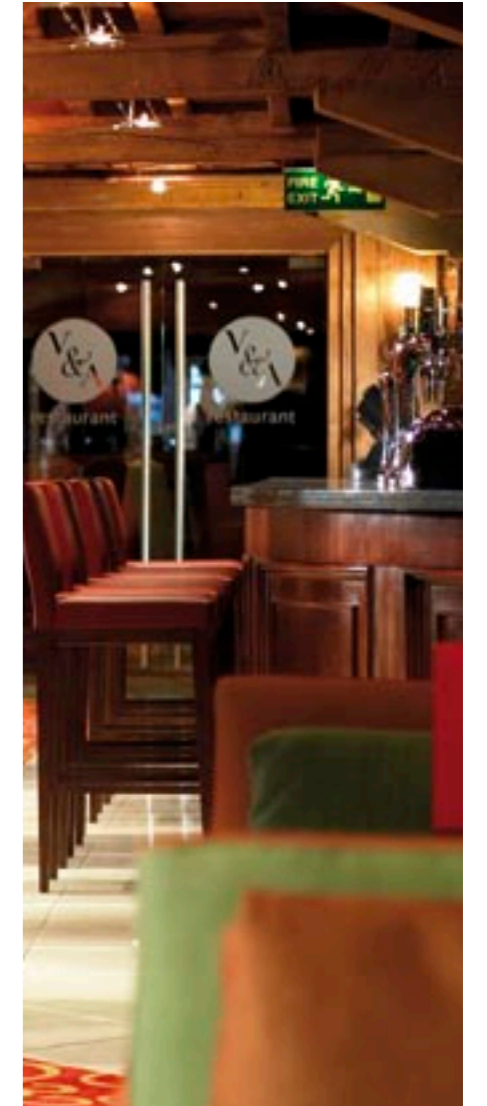
Victoria Room

TAKE TIME OUT.

Private booths overlooking the River Irwell. A terrace with access to an impressive patio and alfresco dining. Casual, contemporary design. The V&A Bar has a relaxed mood by night and a vibrant air by day. Just perfect for that late morning coffee, a reviving cocktail or a light snack. Ideal for unwinding and recharging, or for an informal meeting.



V&A Bar



FOOD WITH FLAIR.

For a real treat, our V&A Restaurant champions regional cuisine with a tasteful contemporary twist. The views over the River Irwell add to the relaxed ambiance, while the Table d'hôte and à la carte menus offer choices for the most discerning of palates.



V&A Restaurant

To complement your meal, choose from our diverse selection of vintage champagnes, world-famous names from Europe, and carefully selected New World flavours – from the rich reds of Chile to the fruity whites of Australia. To enhance your event, we'll design working lunches, creative buffets and mouth-watering menus to satisfy every taste and appetite.



REVIVE YOUR SENSES.

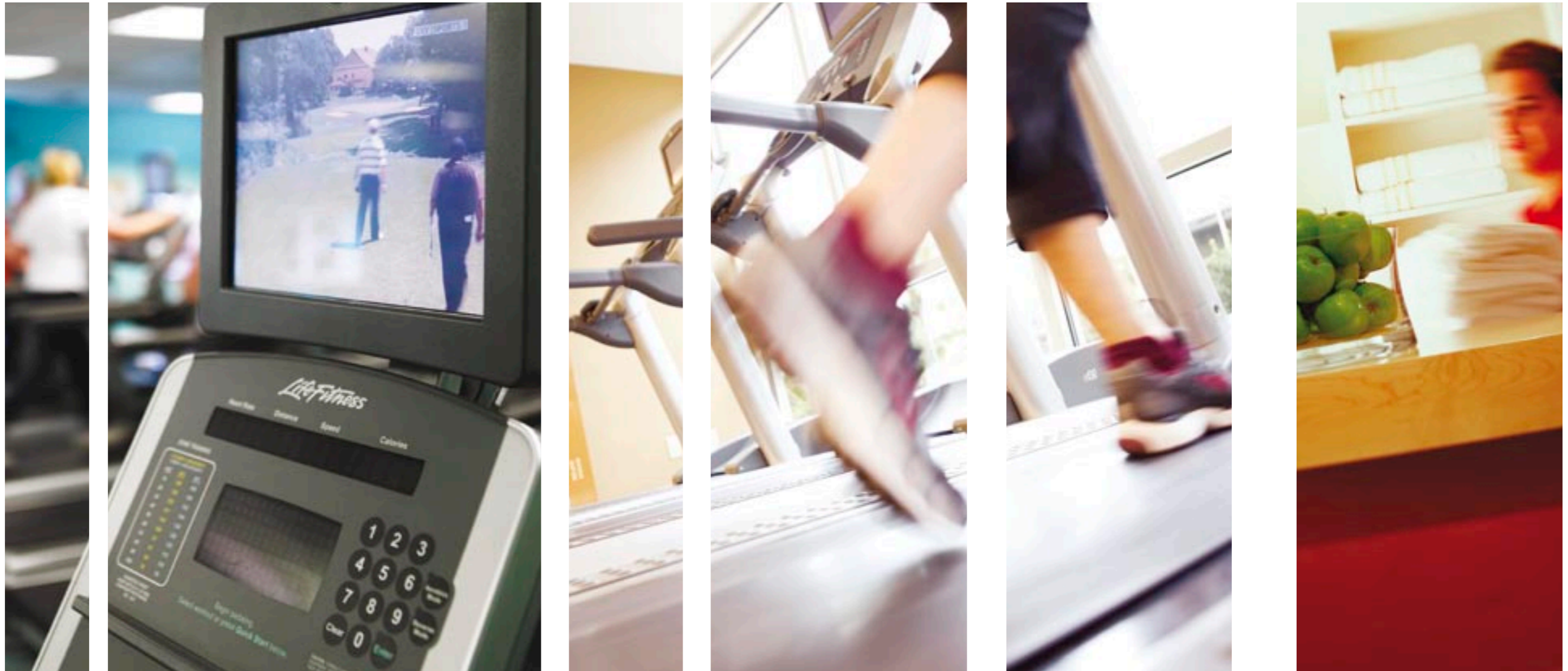
Our 148 bedrooms and suites are lovingly designed to blend comfort with those essential modern touches. Each bedroom has a different original architectural feature, and includes spacious work areas, satellite TV, high-speed wired internet access and Marriott's blissful Revive bedding package. Not to mention 24-hour room service.



Choose to upgrade your room, and take advantage of our four duplex suites, four junior suites and 19 executive rooms, offering additional space to complement our guest rooms.

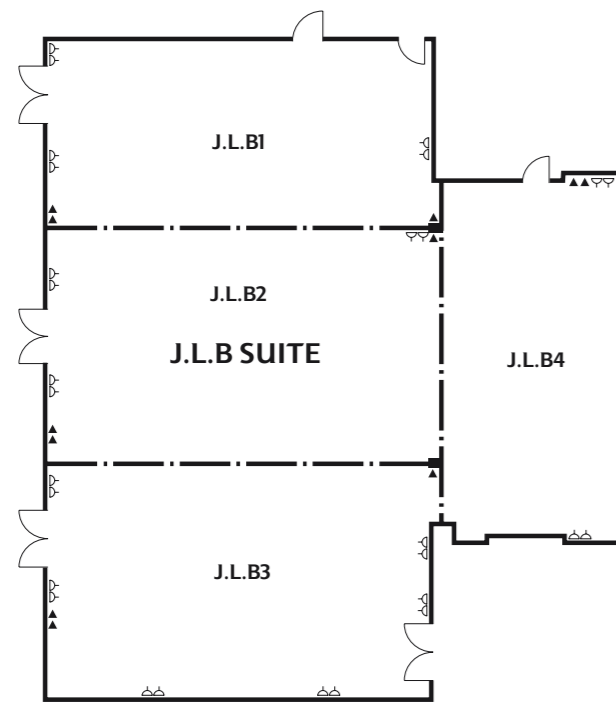
**FEEL RELAXED
AND INSPIRED.**

Work up a sweat or kick back and relax in the nearby Bannatyne's Health Club. Available free to our guests, the gymnasium features the latest resistance and cardiovascular equipment, a pool, sauna, solarium, steam room and salon... in fact, just about everything you could possibly need to stay looking good and feeling your very best.



THE JOHN LOGIE BAIRD SUITE.

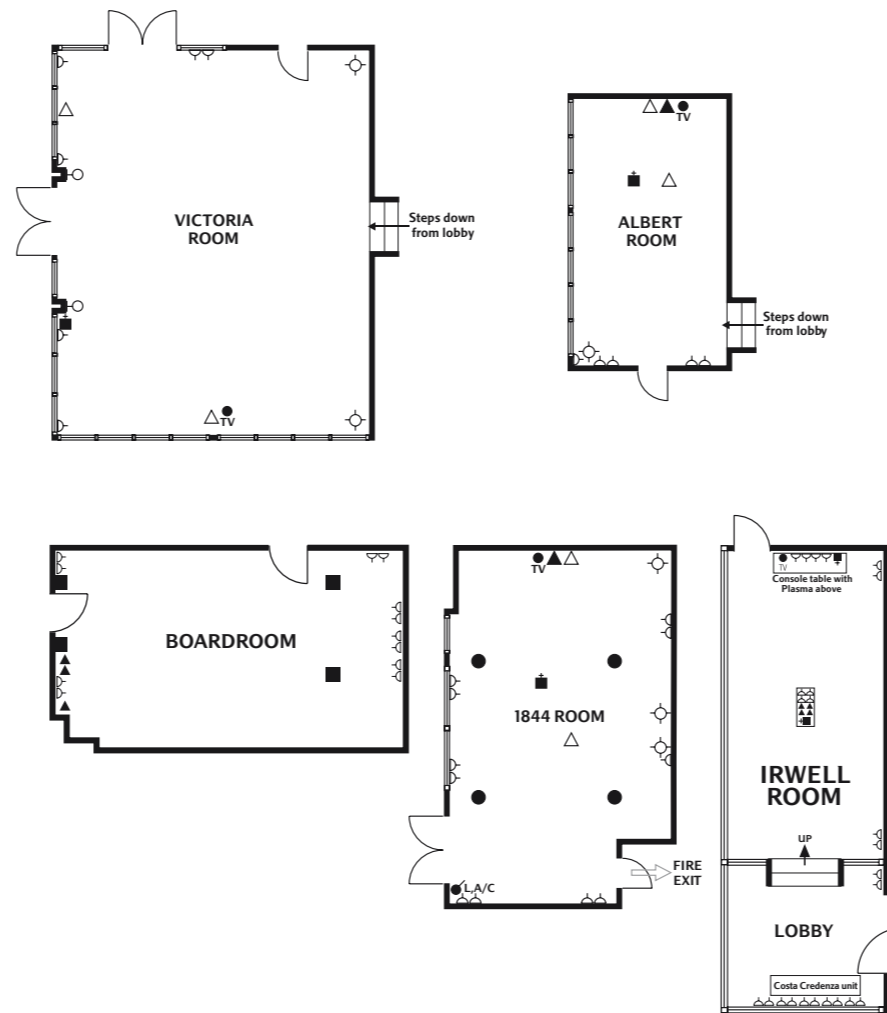
The John Logie Baird Suite is a large and highly adaptable facility that can be subdivided into two, three or four smaller rooms. LCD and pull down screens, an in-built PA system and soundproof moveable walls make it the ideal venue for conferences, product launches and functions. Each room has its own fax/telephone point and power points.



- A ✓ AUDIO
- C ✓ COOLING
- H ✓ HEATING
- L ✓ LIGHTING
- T ✓ TEMPERATURE
- △ POWER POINT – 13 AMP
- TV POINT
- ☐ 3 PHASE SUPPLY
- △ TELEPHONE/FAX POINT
- ▬ WINDOW OR GLAZED SCREEN
- ☐ 32 AMP SUPPLY
- E ELECTRIC SCREEN
- PS ✓ PROJECTION SCREEN
- CONTROL POINT
- ▬ COMFORT COOLING
- - - ACOUSTIC MOVEABLE SCREEN
- ♀ WALL LIGHT
- Ⓞ COMPUTER POINTS
- ⊕ FLOOR SOCKETS

BOARDROOM AND BUSINESS SUITES.

Our Victoria Room, Albert Room, Irwell Room and 1844 Room, together with our Boardroom, offer a wide and flexible choice of locations for your next meeting, event or conference. Plasma screens and wired internet access are available in all meeting rooms.



- A ✓ AUDIO
- C ✓ COOLING
- H ✓ HEATING
- L ✓ LIGHTING
- T ✓ TEMPERATURE
- △ POWER POINT – 13 AMP
- TV POINT
- ☐ 3 PHASE SUPPLY
- △ TELEPHONE/FAX POINT
- ▬ WINDOW OR GLAZED SCREEN
- ☐ 32 AMP SUPPLY
- E ELECTRIC SCREEN
- PS ✓ PROJECTION SCREEN
- CONTROL POINT
- ▬ COMFORT COOLING
- - - ACOUSTIC MOVEABLE SCREEN
- ♀ WALL LIGHT
- Ⓞ COMPUTER POINTS
- ⊕ FLOOR SOCKETS

PLANNING YOUR EVENT.

This quick reference guide is designed to make planning your business event at the Manchester Marriott Victoria & Albert Hotel as easy as possible. If you have any questions or would simply like some advice, please get in touch, we're here to help. You can either call us direct on 0161 832 1188 or email: uk.pennines.sales.office@marriotthotels.com. For online information and to download printable floorplans, visit MarriottEvents.co.uk. While you're there, you can also browse through other Marriott properties across the UK and Ireland.

	DIMENSIONS (METRES)			MAXIMUM NUMBER OF DELEGATES														
	NATURAL DAYLIGHT	AIR COOLING	WHEELCHAIR ACCESS	L	W	H	THEATRE STYLE (NO PROJECTION)	THEATRE STYLE (BACK PROJECTION)	THEATRE STYLE (FRONT PROJECTION)	BOARDROOM STYLE	U-SHAPE	CLASSROOM STYLE	CABARET STYLE (NO PROJECTION)	CABARET STYLE (BACK PROJECTION)	CABARET STYLE (FRONT PROJECTION)	BUFFET RECEPTION	DINNER/DANCE	DINNER
John Logie Baird Suite	-	✓	✓	19.81	17.01	2.5	250	200	220	70	78	135	120	80	100	400	240	260
John Logie Baird Suite 1	-	✓	✓	11.49	5.61	2.5	70	40	50	27	24	30	30	20	25	70	-	50
John Logie Baird Suite 2	-	✓	✓	11.49	7.01	2.5	80	40	60	32	28	40	30	20	25	70	-	60
John Logie Baird Suite 3	-	✓	✓	11.49	7.01	2.5	80	40	60	32	28	40	30	20	25	70	-	60
Irwell Room	✓	✓	-	6.09	3.4	2.4	-	-	-	14	-	-	-	-	-	-	-	-
Boardroom	-	✓	✓	5.09	4.6	2.4	15	-	15	14	12	12	-	-	-	-	-	14
Victoria Room	✓	✓	-	6.1	8	2.4	45	-	45	20	22	30	30	-	30	60	-	50
1844 Room	✓	✓	✓	7.9	5.2	2.1	-	-	-	14	-	-	-	-	-	-	-	14
Albert Room	✓	✓	-	5.8	3.4	2.1	-	-	-	8	-	-	-	-	-	-	-	8

QUICK REFERENCE GUIDE

NO. OF FLOORS	TOTAL NO. OF BEDROOMS	NON-SMOKING BEDROOMS	EXECUTIVE ROOMS	DISABLED BEDROOMS	MARRIOTT COMMUNICATION SOLUTIONS AT THIS HOTEL	THE MARRIOTT BEDROOM (REFER TO HOTEL BROCHURE)	AIR COOLING IN BEDROOM	INTERNET ACCESS IN BEDROOM	MINI-BAR IN BEDROOM	IN-ROOM SAFE	24-HR ROOM SERVICE	LAUNDRY SERVICE	SAFE DEPOSIT AT RECEPTION	SECRETARIAL SERVICES	BUSINESS CENTRE	EXECUTIVE LOUNGE	GIFT SHOP	SHOE SHINE IN PUBLIC AREAS	VENDING MACHINES IN PUBLIC AREAS	ICE MACHINES IN PUBLIC AREAS	VALET PARKING	CONCIERGE	ON-SITE CAR PARKING	FREE CAR PARKING	NUMBER OF PARKING SPACES
4	148	128	19	4	✓	✓	✓	✓	✓	✓	✓	✓	✓	✓	✓	✓	✓	✓	✓	✓	✓	✓	✓	✓	80

RESTAURANTS AND LOUNGES

The V&A Restaurant:
Local freshly prepared brasserie style food and wines.
The V&A Bar:
Coffee, cocktails and light snacks

MARRIOTT LEISURE CLUB

Complimentary off-site leisure facilities:
Bannatyne's Health Club including sauna, solarium, gym and swimming pool within a five minutes walk.

PLACES TO SEE / THINGS TO DO

Imperial War Museum North
Lowry Museum
Trafford Centre
Bridgewater Hall
The Palace Theatre
Royal Exchange Theatre
Opera House
Manchester United and Manchester City Football Stadiums
Spinning Fields Business and Leisure District