



© 2011. Marriott International. All Rights Reserved.

Kansas City Airport

fresh



Welcome to a Refreshing Approach to Events

Whether you're organizing a business meeting or planning a special occasion for friends and family, no hotel makes it easier or more convenient to get things done on your terms than the Courtyard by Marriott. With flexible meeting spaces, fresh and innovating catering, and state-of-the-art audio-visual services, you can count on having all of the choices and options to make the most of your event. You can also count on our dedicated staff of hospitality professionals to take care of the details from start to finish.

We have enclosed sample menus, pricing and space plans to help you get started. If you are looking for something special, please do not hesitate to ask. Our team will do everything to help you design an event that exceeds your attendees' expectations.

Looking forward to serving you soon,

The Courtyard Events Team

Kansas City Airport



fresh



breakfast

Continental Breakfast | \$11.95 / Person
 blueberry and chocolate chip muffins, sliced bagels, butter, cream cheese and preserves, Kellogg's cereals with cold milk, juice, individual fruit flavored yogurt, whole fruit, freshly brewed coffee, decaffeinated coffee and herbal teas

enhancement | add \$2.50 each
 Starbucks Coffee
 seasonal fresh fruit
 Tazo Teas

Hot Breakfast Table | \$15.95 / Person
 blueberry and chocolate chip muffins, sliced bagels, butter, cream cheese and preserves, Kellogg's cereals with cold milk, juice, individual fruit flavored yogurt, whole fruit, freshly brewed coffee, decaffeinated coffee and herbal teas

Oatmeal with brown sugar, dried fruit and nuts
 breakfast potatoes
 sausage and bacon

orange and apple juice



© 2011. Marriott International. All Rights Reserved.

Kansas City Airport

fresh





breaks

PM Break | \$8 / person
Whole Fruits
Bottled water and soft drinks
Coffee and tea service

enhancements | \$2 each
Brownies
Cookies
Bags of potato and pita chips
Assortment of candy bars
Iced teas

enhancements | \$3 each
Energy drinks

Starbucks Coffee/ \$2.50 per person

A la carte items
Gallon of Regular Coffee/ \$25

Gallon of Starbucks Coffee/ \$35

Cookies/Brownies/ \$15 dozen

AM Break | \$7 / Person
Whole Fruits
Bottled water and soft drinks
Coffee and tea service

enhancements | \$2 each
Muffins
Fruit yogurt



Kansas City Airport

fresh





lunch

Bistro Choice | \$16.95

Choose one item from each section. menus provided to guests in the morning and picked up at 9am

Entree Selections:

Roast turkey BLT on toasted sourdough
Caesar wrap, grilled chicken

Chunk white tuna salad on whole grain
Grilled buffalo chicken ranch, lettuce,
tomato, sesame bun

Cheddar French dip roast beef, sharp cheddar,
au jus

Ranch salad bacon, tomato, cheddar, ranch
dressing, grilled chicken

Soup & Salad mug of today's soup with small
ranch salad

Half turkey BLT sandwich and a cup of today's
soup

Sides | Potato chips or Fresh Fruit

Dessert | Turtle nut brownie or Lemon pound
cake

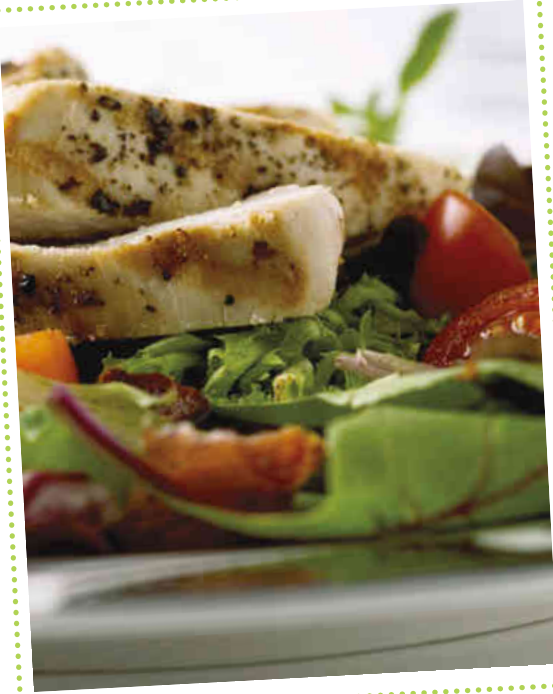
Beverages | Pepsi soft drinks, Bottled water.



Kansas City Airport



fresh



lunch

Bistro DELI Market | \$14.95
Choice of Soup Broccoli cheddar or Onion
Soup

Tuna salad on whole grain

Roast turkey BLT

Caesar wrap, grilled chicken

Creamy coleslaw

Potato chips

Chocolate brownies

Fresh cut fruit

Ice Tea



Kansas City Airport

fresh


COURTYARD[®]
Marriott



lunch

Bistro Lunch Table | \$19.95
Choice of Soup Broccoli cheddar soup or Onion
soup

BBQ chicken flatbread

Tender BBQ ribs

Herb roasted chicken

Pepperoni pizza

Creamy coleslaw

Potato chips

Turtle nut brownie

Ice Tea



Kansas City Airport

fresh





reception

Package # 1 | \$9.95/person
Assorted Cheese and cracker tray, fresh fruit display with dipping sauce, Spinach and artichoke dip and assorted soft drinks

Package #2 | \$13.00/person
assorted cheese and cracker tray, fresh vegetables with dipping sauce, grilled chicken quesadilla with salsa and sour cream. Hummus with pita chips and crispy celery and assorted soft drinks



Kansas City Airport

fresh





technology

standard equipment | complimentary
whiteboard with markers

LCD Projector | \$175/day

easel w/flipchart | \$25/day

power strip (3) and extension cord (3) |
\$10/day



Kansas City Airport

flawless


COURTYARD[®]
Marriott

considerations

A 20% service charge and applicable taxes will be added to all prices.

prices are subject to change