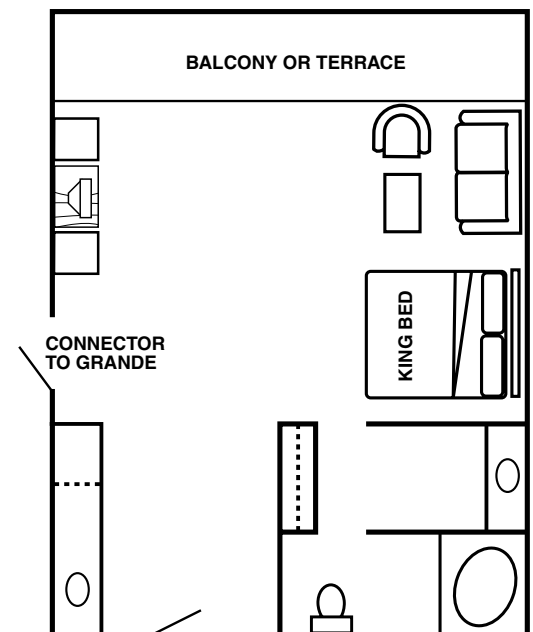


# Spa Executive Suite



Spacious, comfortable and contemporary. That's the perfect description of the Spa Executive Suites at Doral.<sup>®</sup> King-sized beds with pillow-top mattresses, a full wet bar with ice maker, refrigerator, marble countertops and a sitting area with couch, oversized chair and flat-screen TV complete a singular design. Each guest room includes a desk and chair, full bath and exquisite views including some overlooking the lush green of the golf courses. Bedroom amenities feature a bathrobe, coffee maker, in-room safe and an iron and ironing board. A digital clock radio, high-speed Internet access and daily newspaper delivery complete an accommodation package, assuring guests the most comfortable of experiences at Doral.

*Square Footage = 716*

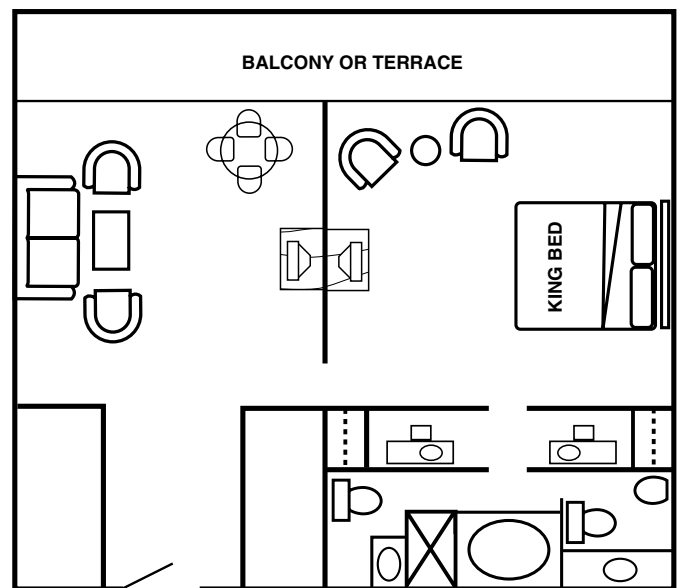


# Spa Master Suite (King)



These new suites consist of roomy and comfortable guest bedrooms with freshly designed and decorated adjoining living rooms. The Spa Master Suites feature king-sized – or two queen-sized – beds with pillow-top mattresses, a full wet bar with icemaker, refrigerator, marble countertops and comfortable leather sitting chairs. His-and-her bathrooms complete with bathrobes and bath amenities provide privacy and the ultimate in luxury. Fresh and distinctive carpeting throughout enlivens the suites that are equipped with flat-screen TVs, high-speed Internet access and daily newspaper delivery.

*Square Footage = 1,093*

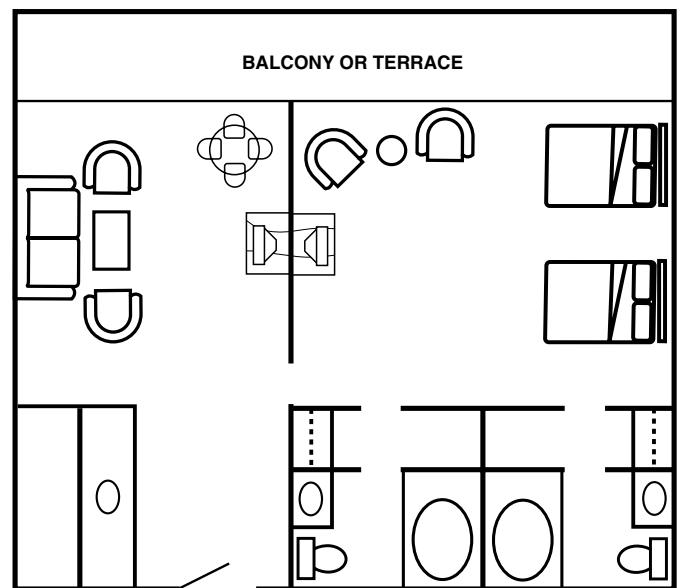


# Spa Master Suite (Queen)



These new suites consist of roomy and comfortable guest bedrooms with freshly designed and decorated adjoining living rooms. The Spa Master Suites feature king-sized – or two queen-sized – beds with pillow-top mattresses, a full wet bar with icemaker, refrigerator, marble countertops and comfortable leather sitting chairs. His-and-her bathrooms complete with bathrobes and bath amenities provide privacy and the ultimate in luxury. Fresh and distinctive carpeting throughout enlivens the suites that are equipped with flat-screen TVs, high-speed Internet access and daily newspaper delivery.

*Square Footage = 1,093*

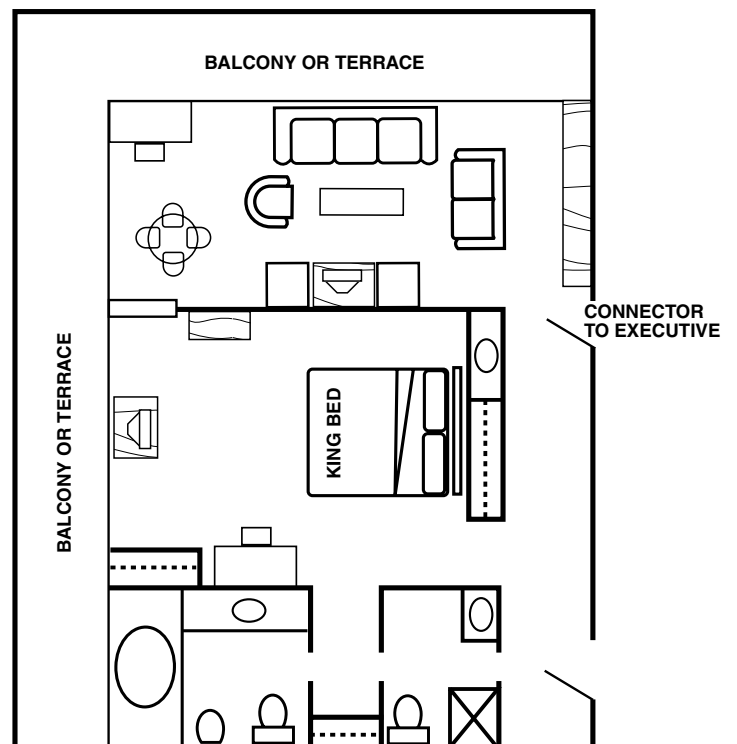


# Spa Grande Suite



The ultimate in luxury, the newly decorated Spa Grand Suites are corner suites offering wrap-around balconies complete with sweeping views of the lush green golf courses. Bedrooms, complete with king-size beds with pillow-top mattresses, are separated from the rest of the suite by classic French doors for greater privacy. The newly re-imagined and refreshed sitting or living room features comfortable couches and chairs, a flat-screen TV, full wet bar, refrigerator, marble countertops and a full-sized dining room table as well as high-speed Internet access for faster online communication. The full baths include Jacuzzi tubs, comfortable bathrobes, coffee makers and a mini bar. As with all our suites, a newspaper is provided daily.

*Square Footage = 1,093*

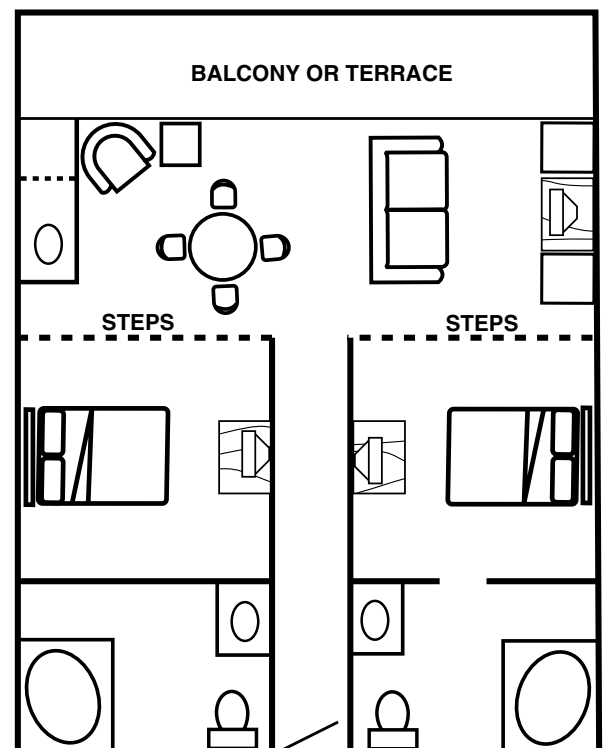


# Spa T-Suite



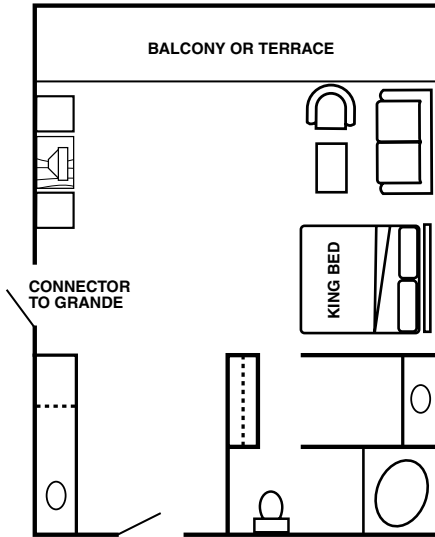
The quintessential spa experience at Doral is the Spa T Suite, an elegantly appointed master suite with two bedrooms, two private baths and a full living room. The bedrooms are situated in an elevated T shape off the newly redecorated living room, which features a dining room area with table for late-night dining. A flat-screen TV, high-speed Internet access and club décor make this living area one both of productivity and sanctuary. Both bedrooms feature queen-sized beds with pillow-top mattresses and an assortment of personal comfort amenities, including terrycloth bathrobes and assorted bath products. The spacious suite bathrooms include Jacuzzi tubs for lingering relaxation.

*Square Footage = 1,100*

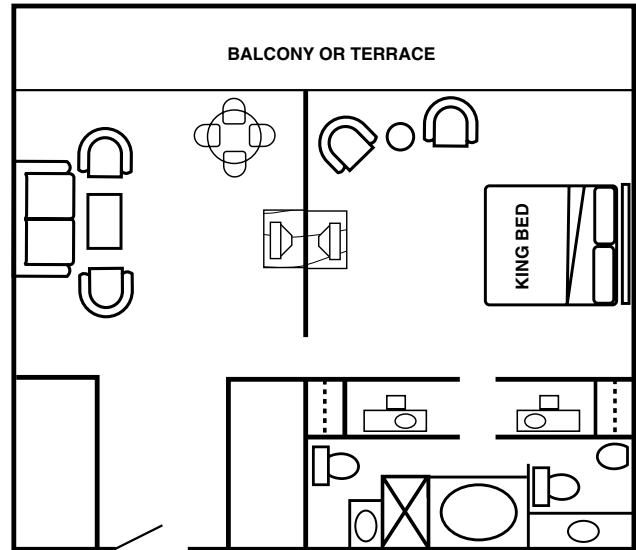


# Spa Suites

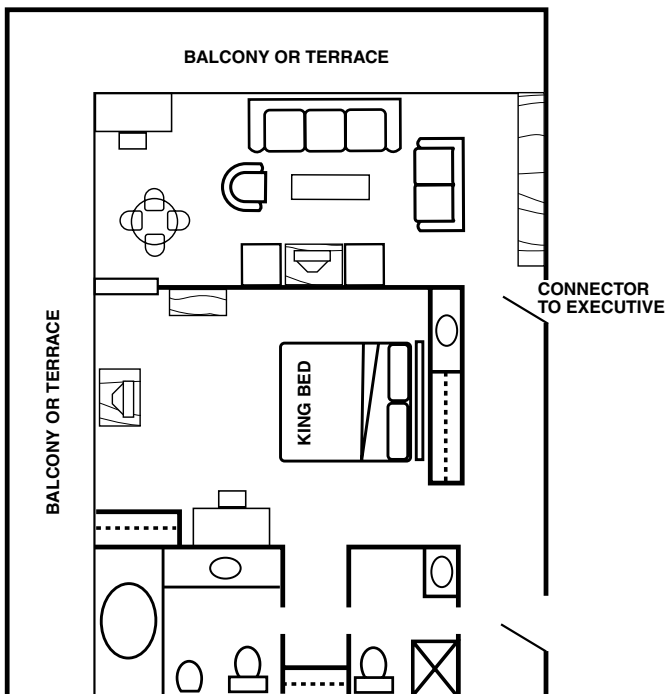
SPA EXECUTIVE SUITE



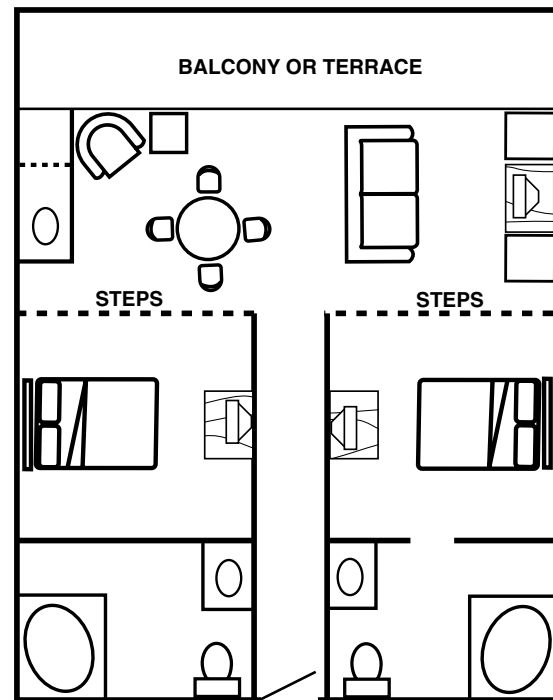
SPA MASTER SUITE



SPA GRANDE SUITE



SPA T-SUITE



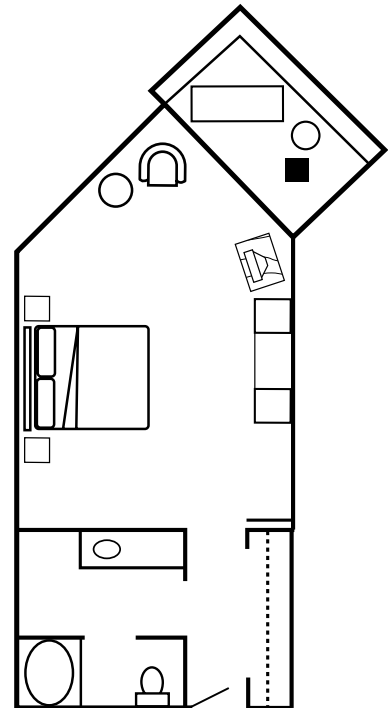
# Resort Room



## Regular Room

- Balcony or Lanai (Most Rooms)
- Golf or Garden View
- King or Double Beds
- Revive® Bed Package
- 300-Thread Count Sheets
- Marble Accents in Bathroom
- High-Speed Internet Access
- Dual-line Phone
- Coffee Maker
- Iron/Ironing Board

Square Footage = 437



# Resort Suite



## 1-Bedroom Suite

- Parlor Area (509 sq. ft.)
- Entry Foyer
- Wet Bar (Seats 3/Walk up)
- Accommodates 40 people for hospitality
- Adjoining Bedroom (490 sq. ft.)
- King or Double Beds
- Furnished Balcony or Patio
- 2 Bathrooms

Square Footage = 999

