



© 2011. Marriott International. All Rights Reserved.

New Orleans Downtown Near the French Quarter

fresh



Welcome to a Refreshing Approach to Events

Whether you're organizing a business meeting or planning a special occasion for friends and family, no hotel makes it easier or more convenient to get things done on your terms than the Courtyard by Marriott. With flexible meeting spaces, fresh and innovative catering, and state-of-the-art audio-visual services, you can count on having all of the choices and options to make the most of your event. You can also count on our dedicated staff of hospitality professionals to take care of the details from start to finish.

We have enclosed sample menus, pricing and space plans to help you get started. If you are looking for something special, please do not hesitate to ask. Our team will do everything to help you design an event that exceeds your attendees' expectations.

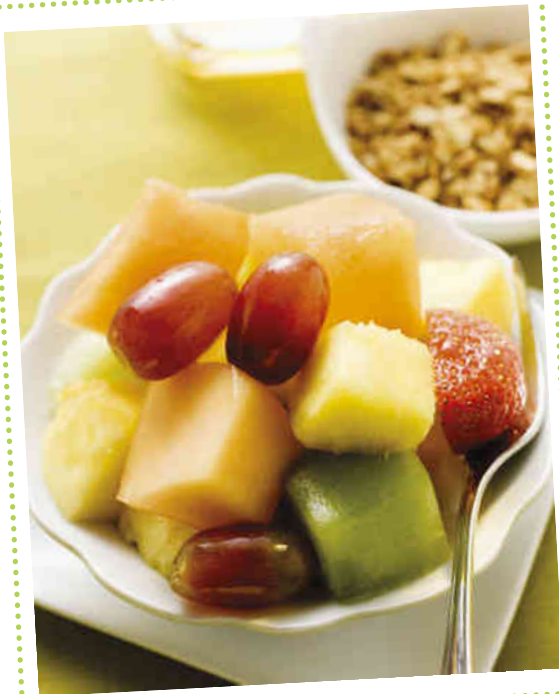
Looking forward to serving you soon,

The Courtyard Events Team

New Orleans Downtown Near the French Quarter

fresh





breakfast

continental breakfast | 11
fresh assorted muffins and pastries
sliced bagels, plain, sesame
butter, cream cheese and preserves
Kelloggs cereals with cold milk
3 kinds of cut seasonal fresh fruits
chilled orange juice
fruit yogurt
coffee and tea service

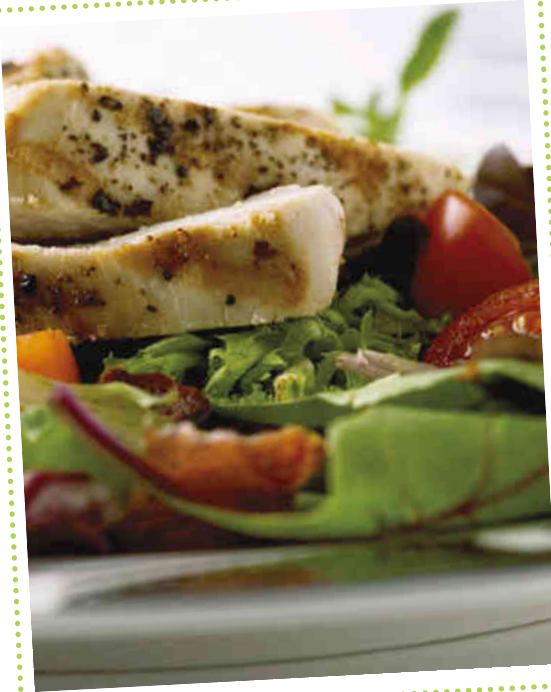
add on's
oatmeal with brown sugar, raisins, and skim
milk | 3
fried egg, sausage, and cheddar muffin
sandwich | 5
scrambled eggs, bacon, and potatoes | 6
Starbucks' Coffee | 3



New Orleans Downtown Near the French Quarter

fresh


COURTYARD[®]
Marriott



lunch

bistro choice | 17

choose one item from each section
menus will be provided to guests the morning
of the function and picked up one hour prior to
lunch break.

beverages:

- * Pepsi, Diet Pepsi, Sierra Mist, bottled water,
iced tea.

entree selections:

- * roast turkey blt: toasted sourdough with low
fat mayo
- * chunk white tuna: lowfat mayo, whole grain
loaf
- * ham and Swiss melt: grain mustard, pickles,
tomato on sourdough
- * cheddar French dip: roast beef, sharp
cheddar, au jus
- * harvest salad: apples, cheddar, cranberries,
walnuts, grilled chicken
- * half turkey sandwich: cup of broccoli soup
- * soup and salad: mug of broccoli soup with
small harvest salad

all sandwiches served with coleslaw

side items:

- *kettle chips or fresh fruit cup

dessert selections:

- *turtle nut brownie or lemon bar



New Orleans Downtown Near the French Quarter

fresh

COURTYARD[®]
Marriott



lunch

bistro market | 20
garden greens
with red wine vinaigrette and Caesar dressing;
croutons, tomatoes, cucumber, olives, and
shredded Parmesan

broccoli cheddar soup

tuna salad on whole wheat
roast turkey and swiss with bacon and
tomatoes on sourdough
chicken Caesar tortilla wrap

creamy coleslaw
kettle chips (individual bags)
pickles
mustard, mayonnaise, ketchup

chocolate brownies and fresh cut fruit



New Orleans Downtown Near the French Quarter

fresh


COURTYARD[®]
Marriott



breaks

coffee & tea service | 4.50
freshly brewed coffee & assorted tea

coffee, tea, & beverage service | 6
soft drinks and iced teas
bottled water
freshly brewed coffee & assorted tea

refreshment break | 8
whole fruits
cookies

soft drinks and iced teas
bottled water
coffee and tea service

add on's
Starbucks' coffee | 3
energy bars | 3.50
energy drinks | 4.50
granola bars | 3.50
brownies or lemon bars | 3.50
roasted nuts, individual packets | 3



New Orleans Downtown Near the French Quarter

fresh



considerations

General Information and Policies

Food and beverage must be purchased and served by the hotel. Printed menus are for general reference and our event staff would be happy to customize menus to meet your specific needs. Menu pricing is subject to change.

Guarantees

In order to make your meeting a success please confirm your guaranteed number of guests 3 business days (72 hours) prior to your event. The expected number will act as a final guarantee number if the guarantee number is not received.

Service Charge and Tax

All food and beverage are subject to a 19% service charge and a 9.75% State Sales Tax.

Shipping

If shipping materials to the hotel, please include the company/group name, event manager, and date of meeting on the outside of the package. The hotel can not assume responsibility for the damage or loss of merchandise sent for storage.