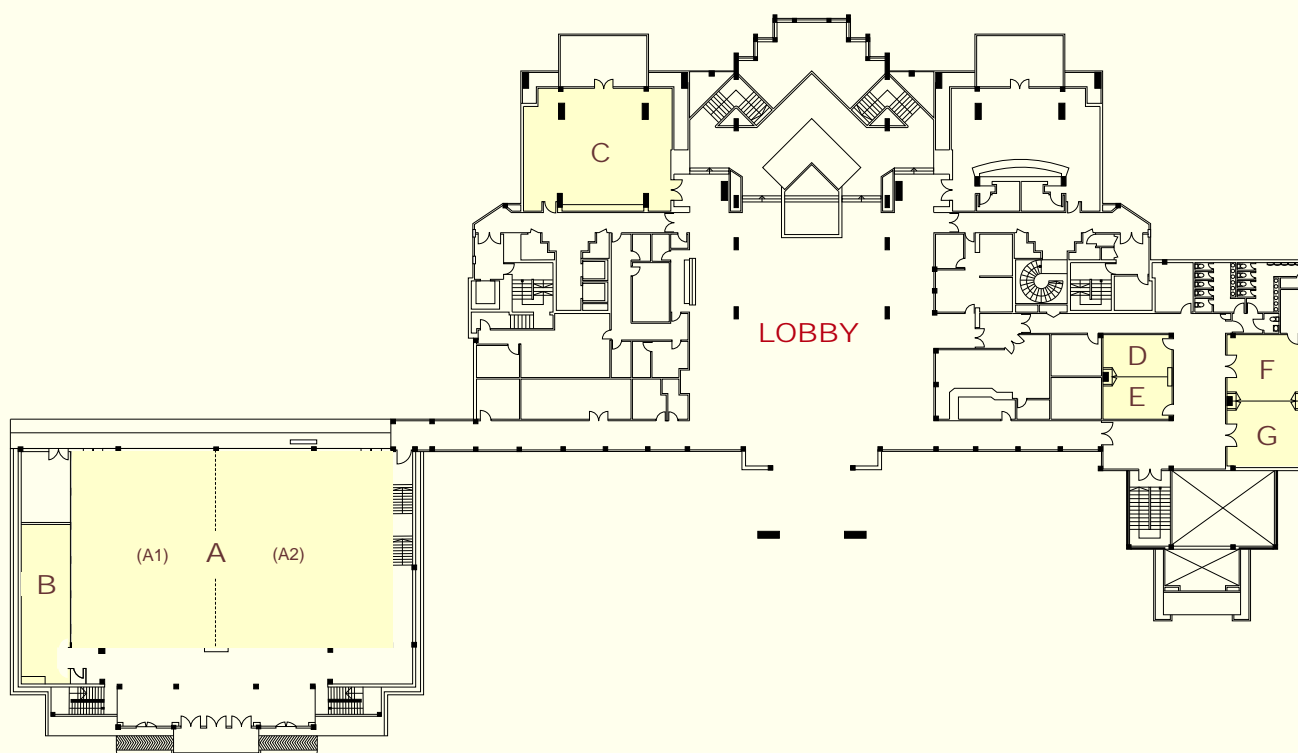


Meeting Room Floor Plan & Capacity Chart



Meeting Room	Dimension (W x L x H)	Dimension (Metric)	Square Footage	Square Meters	Capacity					# of Tables	
					Theatre	School-room	Conference	U-shape	Reception	Rounds of 10	Rounds of 12
Sarawak Grand Ballroom	A 87.26 x 53.47 x 21.32	26.6 x 16.3 x 6.5	4667.05	433.58	500	220	100	80	600	40	35
Sarawak Ballroom I	(A1) 39.36 x 53.47 x 21.32	12.0 x 16.3 x 6.5	2105.43	195.60	150	80	40	35	250	18	15
Sarawak Ballroom II	(A2) 47.89 x 53.47 x 21.32	14.0 x 16.3 x 6.5	2561.61	237.98	200	100	60	45	350	22	18
Loagan Bunut Room	B 45.93 x 14.76 x 8.20	14.0 x 4.5 x 2.5	677.93	63.0	40	20	28	25	50	3	2
Luconia Bay Room	C 52.49 x 39.36 x 14.76	16.0 x 12.0 x 4.5	2066.68	192.0	120	72	50	40	150	12	8
Bario Room	D 12.13 x 20.99 x 8.20	3.7 x 6.4 x 2.5	256.89	23.68	20	12	10	8	30	2	2
Marina Bay Room	E 12.13 x 20.99 x 8.20	3.7 x 6.4 x 2.5	254.89	23.68	20	12	10	8	30	2	2
Gunung Mulu Room	F 22.30 x 22.96 x 8.20	6.8 x 7.0 x 2.5	542.08	47.60	30	18	15	12	60	3	2
Lambir Hills Room	G 19.68 x 22.96 x 8.20	6.0 x 7.0 x 2.5	512.36	42.0	30	18	15	12	60	3	2



Miri Marriott Resort & Spa

Jalan Temenggong Datuk Oyong Lawai, 98000 Miri, Sarawak, Malaysia

Telephone: +60 85 421 121 Facsimile: +60 85 421 099 Sales telephone: +60 85 421 121 ext. 7300 Sales fax: +60 85 420 855

e-mail: sales.miri@marriott-hotels.com Website: www.marriott.com/myymc