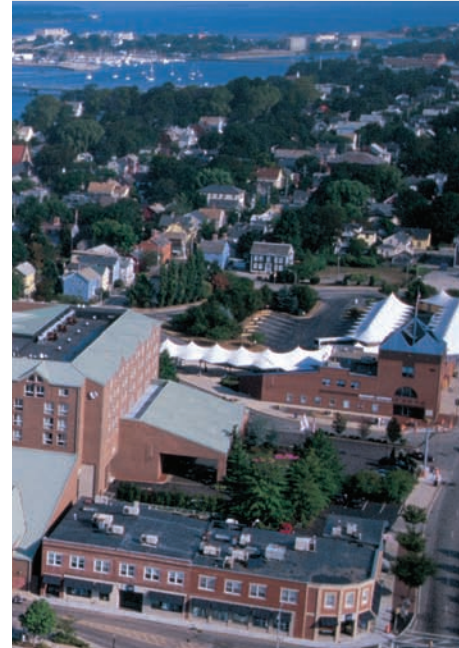


BRING YOUR EVENT TO THE CITY BY THE SEA.



Give your group a real treat. Meet at our wonderful harborside location in Newport, Rhode Island. In an area of historic charm and abundant activities, the Newport Marriott is at the heart of it all, with shopping, restaurants and nightlife just steps from our door. With more than 24,800 square feet of meeting space, we can accommodate a reception for 1,100 in our ballroom, a meeting for 12 in our boardroom, and everything in between. We can also arrange events at local mansions and beaches, or the International Tennis Hall of Fame just a few miles away. Your group will love our Spa, which features massage services, facial and hair care, and more. When it's time to plan something special, plan it here.

NEWPORT MARRIOTT

25 America's Cup Avenue
Newport, Rhode Island 02840
Phone: 401-849-1000
Fax: 401-849-6755
NewportMarriott.com



NEWPORT MARRIOTT

25 America's Cup Avenue
Newport, Rhode Island 02840
Phone: 401-849-1000
Fax: 401-849-6755
NewportMarriott.com

ACCOMMODATIONS

7 floors • 319 rooms • 7 suites • Executive Concierge Level • Concierge Lounge with harbor views • Wired and wireless high-speed Internet access • Marriott Revive® bed • 32" HDTV • Ultra-compatible Plug-in Panel to connect MP3, digital camera, and gaming system • Laptop safe • Mini-refrigerator • Smoke-free hotel policy • Check-in: 4:00 p.m. • Check-out: 11:00 a.m.

RESTAURANTS & LOUNGES

Fathoms Restaurant featuring local, fresh seafood and New England specialties (breakfast/lunch/dinner) • Fathoms Bar • Room Service • Starbucks® Café

RECREATION & LEISURE

The Spa at Newport Marriott featuring massage services, facials, hair care, make up consultation and nail care • Indoor pool • Whirlpool • Sauna • Fitness Center • Racquetball courts • Sun deck • Jogging (nearby) • Golf (nearby) • Tennis (nearby) • Beach (nearby) • Sailing (nearby)

ATTRACTIONS

Newport Mansions • International Tennis Hall of Fame • Cliff Walk • Fort Adams State Park • Museum of Newport History • Newport Art Museum • Museum of Yachting • Brick Market Place • Thames Street shopping, restaurants and nightlife • Green Animals Topiary Garden • Norman Bird Sanctuary • Touro Synagogue • Naval War College Museum • Scenic Harbor Tours • Sailing on 12 meter boats

GUEST SERVICES

24 hour Business Center • Valet and onsite laundry • Chandlery Gift Shop/market • Concierge services

• Valet and self parking • Commercial airport transportation to Logan Airport in Boston and T.F. Green Airport in Providence

MEETING FACILITIES

17 meeting rooms • 24,800 sq. ft. of event space • 7,686 sq. ft. Grand Ballroom divisible into 4 sections • Grand Ballroom accommodates up to 840 for meetings and 600 for banquets • 8,829 sq. ft. Atrium seats 440 for banquets • Outdoor terrace available for seasonal events • Wireless high-speed Internet access • Dedicated event professionals to handle all of your meeting and special event needs • A selection of creative custom menu options

Meeting Room	Dimensions		Capacity						
	WxLxH	Sq. Ft.	Theater	Schoolroom	Conference	U-Shape	Reception	Banquet	
Grand Ballroom	61x126x12	7,686	840	520	–	–	1,100	600	
Salons I, II, III or IV	32x61x12	1,952	200	100	–	–	250	150	
Salons I & II or III & IV	64x60x12	3,840	420	224	–	–	500	300	
Freedom	37x28x10	1,036	100	60	35	46	60	80	
Weatherly	39x27x8	1,053	100	60	35	40	75	80	
Columbia	29x23x8	667	65	35	25	25	50	50	
Courageous	29x22x8	638	65	35	25	25	50	50	
Enterprise	29x22x8	638	65	35	25	25	50	50	
Boardroom	27x18x8	486	–	–	16	–	–	–	
Stars and Stripes	24x45x9	1,080	95	50	30	30	110	80	
Atrium	81x109x50	8,829	–	–	–	–	800	440	
Jamestown Suite	21x20x10	420	30	18	14	12	30	18	
Bristol Suite	21x19x10	399	30	18	8	12	30	10	
Newport Suite	29x25x10	725	65	35	25	25	70	50	
Middletown Suite	29x24x10	696	60	32	20	20	50	40	
Portsmouth Suite	28x20x10	560	40	24	18	16	40	30	
Narragansett Suites Reception Area	30x30x9*	900	–	–	–	–	50	40	
Intrepid	21x15x8	315	–	–	12	–	–	–	

* Irregular shape

