

# events by Marriott



breakfast



breaks



lunch



dinner

beverage



technology

info

## crafted for you

**SAN FRANCISCO AIRPORT MARRIOTT WATERFRONT**

1800 Old Bayshore Hwy | Burlingame | CA 94010

Phone: (650) 692-9100

Sales/Event Management Fax: (650) 692-9861

[www.marriott.com/SFOBG](http://www.marriott.com/SFOBG)

SAN FRANCISCO AIRPORT MARRIOTT WATERFRONT

1800 Old Bayshore Hwy | Burlingame | CA 94010

650.692.9100 | www.marriott.com/SFOBG

events by Marriott

# breakfast

BREAKFAST

breaks

lunch

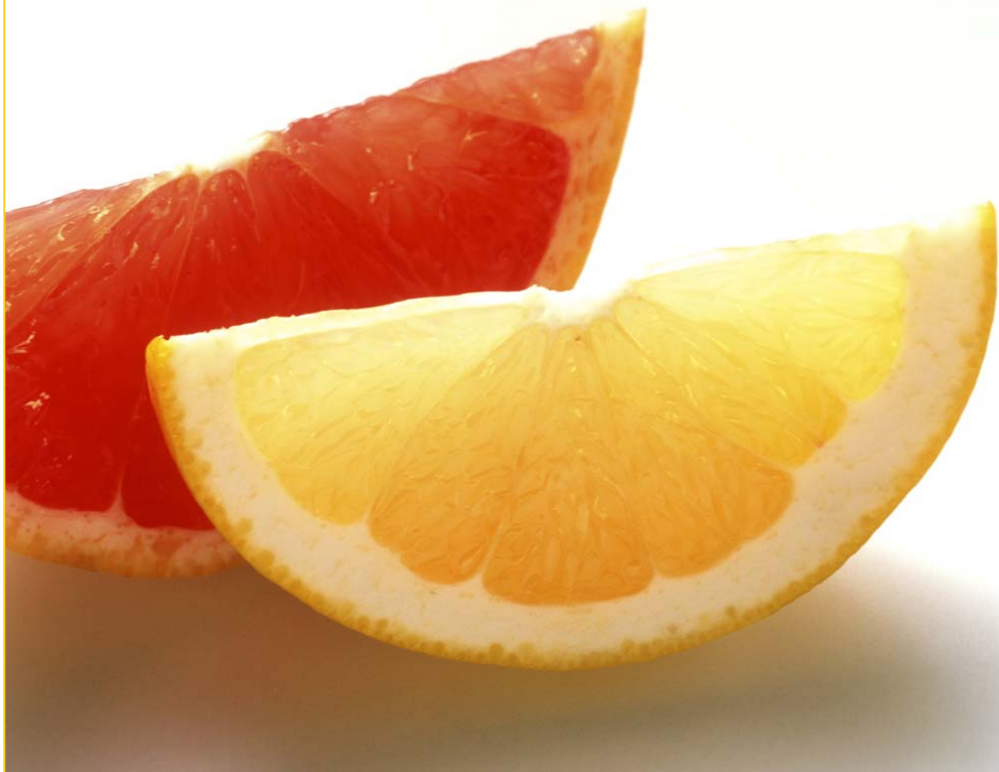
reception

dinner

beverage

technology

info



## SEASON

- cereals
- juices
- coffee
- teas
- pastries
- milk
- yogurt
- eggs

SAN FRANCISCO AIRPORT MARRIOTT WATERFRONT

1800 Old Bayshore Hwy | Burlingame | CA 94010

650.692.9100 | www.marriott.com/SFOBG

# events by Marriott

BREAKFAST

breaks

lunch

reception

dinner

beverage

technology

info

> plated > buffet



## plated breakfast

plated options include orange juice, assorted breakfast pastries, served with fruit preserves, butter and margarine royal cup dakota roast coffee and organic bigelow tea

**all american** **\$29**  
 fresh scrambled eggs, crisp bacon strips, sausage patties and o'brien potatoes



**healthy choice scramble** (carb conscious) **\$28**  
 egg white with sautéed mushroom, spinach served with grilled asparagus & herb tomato

**continental breakfast** **\$24**  
 choice of orange, cranberry or apple juice, oatmeal with raisins and brown sugar chef's selection of freshly baked breakfast pastries/bagels, fruit preserves, butter, margarine and cream cheese royal cup dakota roast coffee and organic bigelow tea

**enhancements** *(per person)*

hard boiled eggs	<b>\$3</b>
variety of cold cereals	<b>\$3</b>
assorted yogurts	<b>\$4</b>
fresh seasonal fruit cup	<b>\$4</b>
granola and fresh seasonal fruit parfait	<b>\$6</b>
smoked salmon platter	<b>\$9</b>
sliced meat and cheese platter	<b>\$9</b>

**enhancements** *(per person)*

bagels and cream cheese	<b>\$4</b>
fresh seasonal fruit cup	<b>\$4</b>
granola and fresh seasonal fruit parfait	<b>\$6</b>
smoothies made to order*	<b>\$4</b>

\* (1) \$75 service attendant fee for every 50 guest

**table enhancements**

seasonal centerpieces	<b>\$5</b>
-----------------------	------------

must guarantee a minimum of 25 guest for plated breakfast. small groups fee of \$125 will apply to any groups with a guarantee of less than 25 guest

SAN FRANCISCO AIRPORT MARRIOTT WATERFRONT

1800 Old Bayshore Hwy | Burlingame | CA 94010

650.692.9100 | www.marriott.com/SFOBG

# events by Marriott

BREAKFAST

breaks

lunch

reception

dinner

beverage

technology

info

> plated > buffet



omelette station\* **\$8 (per person)**  
 prepared to order with peppers, onion, ham, cheese,  
 mushroom, tomatoes, salsa, chilies and spinach

\*attendant fee of \$125 will apply  
 2 hour maximum for buffet functions

**breakfast buffet** **\$32**

orange juice, grapefruit juice, cranberry juice  
 chef's selection of freshly baked pastries  
 with fruit preserves, butter, margarine and cream cheese  
 variety of cold cereals  
 fresh scrambled eggs  
 smoke house bacon  
 o'brien potatoes with peppers and onions  
 seasonal market style fresh sliced fruit  
 royal cup dakota roast coffee and organic bigelow tea

**enhancements** *(per person)*

- bagels & cream cheese **\$4**
- chicken apple sausage **\$4**
- turkey bacon **\$4**
- granola & fresh seasonal fruit parfait **\$6**
- breakfast burrito, chorizo, eggs, potatoes, green chili, cilantro and queso blanco **\$6**
- vegetarian burrito, eggs, red peppers, chile, roasted corn, jalapenos, cilantro and queso blanco **\$6**
- breakfast croissants, filled with scrambled eggs, honey ham and cheese **\$7**
- eggs benedict, sourdough english muffin topped with canadian bacon and poach egg, hollandaise sauce **\$8**

SAN FRANCISCO AIRPORT MARRIOTT WATERFRONT

1800 Old Bayshore Hwy | Burlingame | CA 94010

650.692.9100 | www.marriott.com/SFOBG

events by Marriott

# breaks

breakfast

**BREAKS**

lunch

reception

dinner

beverage

technology

info



## DELIGHT

- coffee
- cookies
- popcorn
- smoothies
- pretzels
- chips
- biscotti
- granola

**SAN FRANCISCO AIRPORT MARRIOTT WATERFRONT**

1800 Old Bayshore Hwy | Burlingame | CA 94010  
 650.692.9100 | www.marriott.com/SFOBG

# events by Marriott

breakfast      BREAKS      lunch      reception      dinner      beverage      technology      info

## breaks

> am - morning      > pm - afternoon

**am/pm beverage break**      **\$15**

assorted sodas and bottled waters  
 royal cup dakota roast coffee and organic bigelow tea

**healthy start break**      **\$19**

granola bars  
 hummus with flat bread  
 whole fruits  
 assorted sodas and waters  
 royal cup dakota roast coffee and organic bigelow tea

**power break**      **\$22**

power bars and candy bars  
 assorted cheeses and grilled vegetables  
 assorted sodas and waters  
 royal cup dakota roast coffee and organic bigelow tea

**fresh start break**      **\$24**

fruit juices  
 seasonal sliced fruit  
 seasonal fresh vegetables with  
 homemade green goddess dip  
 assorted sodas and waters  
 royal cup dakota roast coffee and organic bigelow tea

**snack attack break**      **\$24**

freshly popped popcorn  
 tortillas with five-layer dip  
 assorted ice cream bars and frozen fruit bars  
 assorted sodas and waters  
 royal cup dakota roast coffee and organic bigelow tea

1 hour service for breaks priced per person



## beverages

- soda      **\$5/10 oz. bottle**
- bottled water      **\$5/bottle**
- orange juice      **\$5/bottle**
- grapefruit juice      **\$5/bottle**
- flavored water      **\$6/bottle**
- gatorade      **\$6/bottle**
- red bull      **\$6/can**
- pellegrino      **\$7/bottle**
- odwalla juices      **\$7/bottle**
- royal cup dakota roast coffee  
(regular or decaf)      **\$87/gallon**
- organic bigelow tea      **\$87/gallon**

2011. Marriott International. All Rights Reserved. Marriott Confidential & Proprietary Information

**SAN FRANCISCO AIRPORT MARRIOTT WATERFRONT**

1800 Old Bayshore Hwy | Burlingame | CA 94010  
 650.692.9100 | www.marriott.com/SFOBG

# events by Marriott

breakfast      BREAKS      lunch      reception      dinner      beverage      technology      info

> am - morning      > pm - afternoon

## morning or afternoon treats

*(per person)*

- chips and salsa \$5
- seasonal sliced fruit with honey yogurt \$6
- sweet and savory nuts \$6

1 hour service for breaks priced per person

*(per piece)*

- bags of fresh popcorn \$3
- assorted candy bars \$3
- granola bars \$3
- seasonal whole fruit \$3
- deviled eggs \$4
- assorted scones \$4
- frozen fruit bars \$4
- häagen-dazs® ice cream novelties \$5
- seasonal fresh fruit cup \$5
- granola and fresh seasonal fruit parfait \$6

*(per dozen)*

- assorted muffins \$42
- assorted sliced fruit nut breads \$42
- breakfast pastries \$42
- fresh baked croissants \$42
- warm sticky buns \$43
- bagels and cream cheese \$43
- glazed doughnuts \$44
- cookies, brownies, blondies \$45
- chocolate dipped strawberries \$45
- flavored soft baked pretzels with mustard \$46



SAN FRANCISCO AIRPORT MARRIOTT WATERFRONT

1800 Old Bayshore Hwy | Burlingame | CA 94010

650.692.9100 | www.marriott.com/SFOBG

events by Marriott

# lunch

breakfast

breaks

LUNCH

reception

dinner

beverage

technology

info



## ESSENCE

- salads
- chicken
- fish
- beef
- pasta
- desserts
- beverages
- sandwiches

SAN FRANCISCO AIRPORT MARRIOTT WATERFRONT

1800 Old Bayshore Hwy | Burlingame | CA 94010  
650.692.9100 | www.marriott.com/SFOBG

# events by Marriott

breakfast      breaks      LUNCH      reception      dinner      beverage      technology      info

> plated    > buffet    > box

## plated lunch

all luncheon selections are served with fresh baked rolls and butter, choice of cup of seasonal house soup or salad, entrée, chef's selection of accompaniments, dessert, iced tea, royal cup dakota roast coffee and organic bigelow tea

**salad or soup** (choice of one)

### seasonal soup of the day

selections vary ask your event manager for details

### salinas valley iceberg salad

blue cheese crumbles, chopped bacon and bleu cheese dressing

### local garden house salad

organic baby greens, kalamata olives, grape tomatoes, cucumber, radishes, fresh herbs, lemon herb vinaigrette

### baby spinach

grilled red onions, candied walnuts, point reyes blue cheese and yogurt vinaigrette

### butter lettuce

orange segments, toasted pecans and creamy roquefort dressing

## poultry

### pan seared chicken breast

\$39

lemon sage and pearl onions

### grilled chicken cordon bleu

\$41

wild sundried tomato, brie cheese, arugula risotto

## beef

### grilled bistro steak

\$43

bacon mushroom, pancetta risotto, roasted shallot butter  
roasted shallot butter

## seafood

### salmon ala plancha

\$41

with creamy spinach

### fresh seasonal fish

\$43

mediterranean cous cous, citrus sauce

## lunch dessert (choice of one)

### fruit tart with seasonal fruit

### chocolate mousse duet

white, dark chocolate mousse, chocolate sponge cake

### sorbet

refreshing sorbet served in a sugar rimmed glass, choice of strawberry, lemon or mango

### white chocolate raspberry cream cake

with raspberry coulis and fresh seasonal berries

## SAN FRANCISCO AIRPORT MARRIOTT WATERFRONT

1800 Old Bayshore Hwy | Burlingame | CA 94010  
650.692.9100 | www.marriott.com/SFOBG

# events by Marriott

breakfast      breaks      LUNCH      reception      dinner      beverage      technology      info

> plated    > buffet    > box

## plated light lunches

these “two course” lunches include fresh baked breads, Rolls and butter, dessert, iced tea, royal cup dakota roast coffee and organic bigelow tea

### italian deli plate \$36

artisan bread selection, sliced pepper turkey, black forest ham, pastrami, white cheddar cheese, mozzarella, provolone, leaf lettuce, tomatoes and sweet gerkins, red pepper pesto penne pasta salad

### chilled salmon nicoise salad \$38

tender bibb lettuce, baby green beans, tear drop tomatoes and parsley new potatoes, dijon vinaigrette

### skirt steak with a salinas valley iceberg salad \$39

blue cheese crumbles, chopped bacon, and bleu cheese dressing



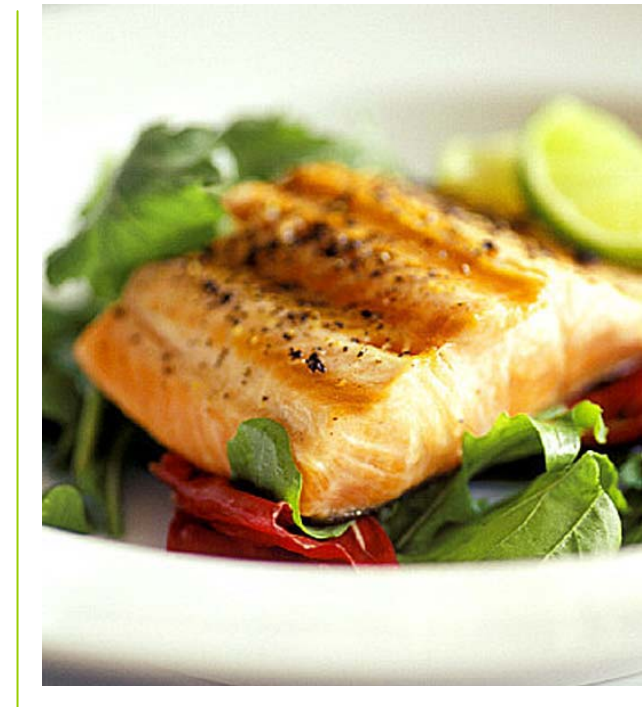
### healthy offering low fat \$39

mixed greens with raisins, sliced peppers, balsamic dressing  
golden citrus glazed chicken, sunset blend rice with  
grilled vegetable tower  
orange scented angel food cake



### carb conscious \$40

spinach and pecan salad with lemon vinaigrette  
cedar wrapped salmon with garlic spinach  
strawberry cup with lemon gelatin and fresh strawberries



light lunches (50 guest maximum)

breakfast   breaks   LUNCH   reception   dinner   beverage   technology   info

> plated   > buffet   > box

## daily vegetarian options

### monday | grilled portobello and spinach crepes

filled with ricotta and boursin cheese, topped with oven roasted tomatoes bruschetta, and seasonal vegetables

### tuesday | cheesy lasagna roulettes

pasta filled with ricotta cheese, fresh herbs, tomato fondue, and seasonal vegetables

### wednesday | mixed vegetable wellington

assorted roasted vegetables baked in a puff pastry, roasted pepper coulis, and seasonal vegetables

### thursday | eggplant roulette

breaded eggplant filled with cream cheese, fresh herbs, caponata vegetables

### friday | puff pastry tower

grilled portobellos, yukon potatoes roasted peppers with a lentil ragu, blue lake green beans

### saturday | wild mushroom, potato, and grilled vegetable moussaka

with a red ricotta glaze, served in a casserole dish

### sunday | seared portobello ravioli

pistachio pesto sauce, mélange of roasted grilled vegetables



all plated meal functions will come with our daily vegetarian option.  
if there are any questions, please feel free to contact your event manager for assistance.  
any variation from daily options will incur a price increase.

**SAN FRANCISCO AIRPORT MARRIOTT WATERFRONT**

1800 Old Bayshore Hwy | Burlingame | CA 94010  
650.692.9100 | www.marriott.com/SFOBG

# events by Marriott

breakfast      breaks      LUNCH      reception      dinner      beverage      technology      info

> plated    > buffet    > box



## boxed lunches

all sandwiches prepared on chef's choice of artisan bread  
all box lunches come with fresh seasonal whole fruit, orzo pasta with tomatoes, parsley, cucumbers, and caramel apple dessert bar

**tuscan chicken** **\$31**  
roasted pepper, mozzarella, arugula spinach basil pasta

**turkey** **\$31**  
sliced cajun flavor turkey, smoked mozzarella and cilantro mayonnaise

**roast beef** **\$31**  
with maytag blue cheese, honey mustard drizzle, baby spinach and sliced roma tomatoes

**black forest ham** **\$31**  
with italian salami, smoked provolone, dijon mayonnaise, arugula and roasted red peppers

**garden vegetable wrap** **\$31**  
oven roasted tomatoes, portobello mushrooms, avocado puree, spinach herb mayonnaise

## beverages

	<i>(per item)</i>
soda	<b>\$5</b>
bottled water	<b>\$5</b>
flavored water	<b>\$6</b>
red bull	<b>\$7</b>
pellegrino	<b>\$7</b>

2011. Marriott International. All Rights Reserved. Marriott Confidential & Proprietary Information

## SAN FRANCISCO AIRPORT MARRIOTT WATERFRONT

1800 Old Bayshore Hwy | Burlingame | CA 94010  
650.692.9100 | www.marriott.com/SFOBG

# events by Marriott

breakfast    breaks    LUNCH    reception    dinner    beverage    technology    info

> plated    > buffet    > box

## lunch buffet

buffets include iced tea, royal cup dakota roast coffee and organic bigelow tea.

### turkey delight

\$39

butter milk biscuits with honey butter  
mixed green salad with ranch and italian dressings  
roasted turkey breast with giblet gravy and sourdough, sausage,  
cornbread pudding  
candied sweet potatoes  
green bean almondine  
deep dish apple pie, cinnamon whipped cream  
german chocolate cake

### all american

\$43

fried chicken  
fresh cornbread with roasted corn and jalapenos  
spinach salad with bermuda onions, carrots and cherry tomatoes, citrus vinaigrette  
bacon wrapped meatloaf, spicy ketchup glaze, mushroom gravy  
roasted garlic mashed potatoes with chives  
creamy macaroni and three cheeses:  
white cheddar, american, parmesan  
rosemary and honey glazed carrots  
pecan pie  
strawberry shortcake

25 person minimum for buffets.  
guarantees with less than 25 will incur a fee of \$125. 2 hour maximum service.



## beverages

	(per item)
soda	\$5
bottled water	\$5
flavored water	\$6
red bull	\$7
pellegrino	\$7

**SAN FRANCISCO AIRPORT MARRIOTT WATERFRONT**

1800 Old Bayshore Hwy | Burlingame | CA 94010  
 650.692.9100 | www.marriott.com/SFOBG

# events by Marriott

breakfast      breaks      LUNCH      reception      dinner      beverage      technology      info

> plated    > buffet    > box

**latin buffet**

**\$44**

flour tortillas

**soup**

caldo de res (mexican soup)

**starters**

jicama and watermelon salad  
 grilled chayote squash and tomato salad with  
 lemon vinaigrette

**entrees**

cheese enchilada, chipotle tomato sauce, queso blanco  
 arroz con pollo, chicken, rice, roasted corn, peas  
 achiotte grilled steak with cilantro chimichurri  
 black beans

**dessert**

dulce de leche cake  
 fresh baked cinnamon cookies

**pan pacific buffet**

**\$45**

**soup**

tofu, spinach soup

**salads**

spicy fire cracker spinach salad, orange sesame

**dressing**

tofu bean curd and cucumber salad

**entrees**

lemon grass basil scented basa coconut green curry  
 sauce  
 orange peel chicken and green beans  
 pork pot stickers  
 stir fried vegetable  
 california brown rice

**dessert**

mango coconut mousse  
 lemon burst macaroon bars

25 person minimum for buffets.  
 guarantees with less than 25 will incur a fee of \$125.  
 2 hour maximum service.

**beverages**

*(per item)*

soda	<b>\$5</b>
bottled water	<b>\$5</b>
flavored water	<b>\$6</b>
red bull	<b>\$7</b>
pellegrino	<b>\$7</b>



2011. Marriott International. All Rights Reserved. Marriott Confidential & Proprietary Information

## SAN FRANCISCO AIRPORT MARRIOTT WATERFRONT

1800 Old Bayshore Hwy | Burlingame | CA 94010  
650.692.9100 | www.marriott.com/SFOBG

# events by Marriott

breakfast      breaks      LUNCH      reception      dinner      beverage      technology      info

> plated    > buffet    > box

### north beach

\$46

garlic breadsticks

#### soup

seasonal soup of the day

#### salads

romaine lettuce salad, country greek salad with basil and anchovy vinaigrette, feta cheese, cucumbers, tomato, red onions and kalamatta olives  
mediterranean eggplant and barley salad

#### entrees

chicken marsala, seared chicken breast, mixed mushrooms, marsala wine sauce  
baked ziti pasta with italian sausage, ground beef, and spicy tomato ragu topped with mozzarella and parmesan cheese  
green bean caponata

#### desserts

chocolate dipped biscotti  
almond cream cake

### executive deli

\$43

#### soup

seasonal soup of the day

#### salads

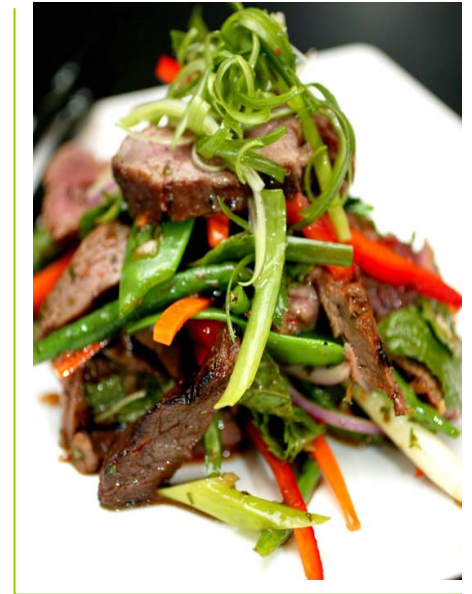
mixed greens, sliced radishes, organic pear tomatoes, cucumbers in spicy buttermilk ranch dressing  
potato salad with sliced olives and roasted peppers  
tuscan roasted mushroom salad, julienne arugula ribbons

#### sandwiches

roast beef, arugula sandwich with rosemary mayonnaise  
sliced cajun flavor turkey, smoked mozzarella, cilantro mayonnaise on rustic ciabatta roll  
vegetable wraps, cucumbers, grilled peppers, balsamic red onions, spinach, tomato and boursin cheese  
assorted potato chips

#### desserts

caramel brownies  
strawberry shortcake



### beverages

(per item)

soda	\$5
bottled water	\$5
flavored water	\$6
red bull	\$7
pellegrino	\$7

25 person minimum for buffets.  
guarantees with less than 25 will incur a fee of \$125.  
2 hour maximum service.

SAN FRANCISCO AIRPORT MARRIOTT WATERFRONT

1800 Old Bayshore Hwy | Burlingame | CA 94010  
650.692.9100 | www.marriott.com/SFOBG

events by Marriott

reception

breakfast

breaks

lunch

RECEPTION

dinner

beverage

technology

info



ESSENCE

- canapés
- sushi
- prime rib
- bruschetta
- antipasto
- crudité
- ceviche
- dim sum

## SAN FRANCISCO AIRPORT MARRIOTT WATERFRONT

1800 Old Bayshore Hwy | Burlingame | CA 94010

650.692.9100 | www.marriott.com/SFOBG

# events by Marriott

breakfast

breaks

lunch

RECEPTION

dinner

beverage

technology

info

## reception

### cold hors d'oeuvres

antipasto kabob: tri color tortellini, roasted tomatoes, kalamatta olives and prosciutto

\$5

caprese skewers: cherry mozzarella, fresh basil, organic plum tomatoes

\$5

avocado cream cheese on crostini with red peppers

\$5

smoked salmon wrapped asparagus crostini

\$5

fresh bruschetta

\$5

boursin cheese and walnut on mini bouche

\$6

smoked duck on a crepe with apricot, jalapeño, chives

\$6

mojito marinated shrimp cocktail

\$6

peppered beef tenderloin on potato pancake

\$7

assorted fresh local sushi to include

\$10

maki and nigiri sushi – 2 pieces per person



### hot hors d'oeuvres

seasonal flat bread

\$5

goat cheese bacon wrapped dates with balsamic reduction

\$5

chipotle steak churrasco

\$6

pad thai spring roll

\$6

fig and caramelized mini puff

\$6

pulled pork biscuit

\$6

lobster empanadas

\$6

gorgonzola & cranberry puffs

\$6

grilled ker élan shrimp

\$7

korean BBQ chicken satay

\$7



all items are priced per piece -- 50 pieces minimum per order; 2 hour service limit on reception items

Prices are per person unless otherwise noted. A customary 24% taxable service charge and sales tax (currently 8.25%) will be added to prices

**SAN FRANCISCO AIRPORT MARRIOTT WATERFRONT**

1800 Old Bayshore Hwy | Burlingame | CA 94010

650.692.9100 | www.marriott.com/SFOBG

# events by Marriott

breakfast      breaks      lunch      RECEPTION      dinner      beverage      technology      info

**specialty displays**

**vegetable crudité (serves up to 50 guest)**      \$300  
grilled and fresh raw vegetables with assorted dips

**gourmet cheese**      \$350  
garnished with fresh fruit, assorted crackers and baguettes

**antipasto**      \$450  
local international meats and cheeses with marinated vegetables

**assorted sushi (100 pieces)**      \$450  
with wasabi, pickled ginger and soy

**shrimp cocktail (100 pieces)**      \$500

**dessert station (per 100 pieces)**      \$425  
mini pastries, petit fours and chocolate truffles

**stations** *(per person)*

**slider trilogy delight (3 pieces per person)**      \$21  
angus beef slider - vermont cheddar on herb mayonnaise, crab cake slider - micro greens and yellow peppers aioli, bbq pulled slow roasted pork sliders with coleslaw

**\*fish taco station (3 pieces per person)**      \$18  
to include grilled seasonal fish, yellow corn tortillas and flour tortillas, mexican crema, pico de gallo, tomatillo cilantro salsa

**\*pasta station**      \$16  
orechietta pasta carbonara and cheese tortellini with grilled portobello mushrooms, spicy tomato ragu sauce  
add grilled chicken      \$5  
add italian sausage      \$6  
add grilled shrimp      \$7

**carving stations** *(per person)*

**honey baked ham**      \$9  
served with maple mustard sauce

**boneless turkey breast**      \$10  
roasted and served with pesto mayonnaise and cranberry chutney

**planked salmon**      \$11  
fresh fennel, dill, peppercorn remoulade

**prime rib**      \$12  
herb rubbed and served with rosemary merlot au jus

**tenderloin of beef en croûte**      \$14  
stuffed with red peppers, spinach and boursin cheese



2011. Marriott International. All Rights Reserved. Marriott Confidential & Proprietary Information

## SAN FRANCISCO AIRPORT MARRIOTT WATERFRONT

1800 Old Bayshore Hwy | Burlingame | CA 94010

650.692.9100 | [www.marriott.com/SFOBG](http://www.marriott.com/SFOBG)

# events by Marriott

# dinner

breakfast

breaks

lunch

reception

DINNER

beverage

technology

info



## FLAVOR

- sweet
- savory
- spicy
- fresh
- seasoned
- aroma
- character
- distinction

breakfast

breaks

lunch

reception

DINNER

beverage

technology

info

> plated > buffet

## dinner

all dinner selections are served with fresh baked rolls and butter, choice of cup of seasonal house soup or salad, chef's selection of accompaniments, dessert, royal cup dakota roast coffee and organic bigelow tea



## starters

### soup of the day or clam chowder

selections vary –

ask your event manager for details

### baby lolla rossa salad

crisp prosciutto, gorgonzola, pear tomatoes, honey mustard dressing

### grilled asparagus salad

cherry tomato bruschetta, pt reyes bleu cheese, extra virgin olive oil

### tricolor salad

fresh buffalo mozzarella, sliced roma tomatoes, sliced avocado, balsamic vinaigrette

### little gems lettuce salad

medjool dates, candied walnuts, feta cheese, white balsamic dressing

## SAN FRANCISCO AIRPORT MARRIOTT WATERFRONT

1800 Old Bayshore Hwy | Burlingame | CA 94010

650.692.9100 | www.marriott.com/SFOBG

# events by Marriott

breakfast

breaks

lunch

reception

DINNER

beverage

technology info

> plated > buffet

## entrees

- grilled french breast of chicken** \$51  
wild mushrooms, goat cheese polenta, and natural au jus
- slow roasted ½ chicken breast** \$53  
roasted yukon, sweet potatoes, lemon sage and pearl onions
- seasonal fresh fish** \$55
- hangar's cedar wrapped salmon** \$56  
julienned leeks, shiitake mushrooms, coconut scented jasmine rice, baby bok choy
- parmesan crusted sea bass** \$58  
creamy orzo pasta, seasonal vegetables
- grilled rib-eye steak** \$59  
red onion marmalade, 3 cheese scallop potatoes, seasonal vegetables
- dry rub n.y. steak** \$61  
chianti reduction, roasted fingerling potatoes, seasonal vegetables, veil au jus
- seared filet mignon** \$65  
sweet potato, chorizo hash, veil au jus

## desserts

- crème brûlée & berries**  
a layer of raspberry sauce topped with a creamy custard, mixed berries and caramel
- chocolate crisp cake**  
caramelized hazelnuts, chocolate ganache, chocolate mouse
- mango panna cotta**
- swedish princess cake**  
white cake soaked in cherry brandy, raspberry, whip cream, marscapone cheese



breakfast

breaks

lunch

reception

DINNER

beverage

technology info

> plated > buffet

## combination dinners

**combination dinner** **\$73**  
dry rubbed grilled bistro steak  
pinot noir reduction

**roasted jumbo prawns**  
lemon essence butter, 3-cheese scallop potatoes

**combination dinner** **\$73**  
california sea bass

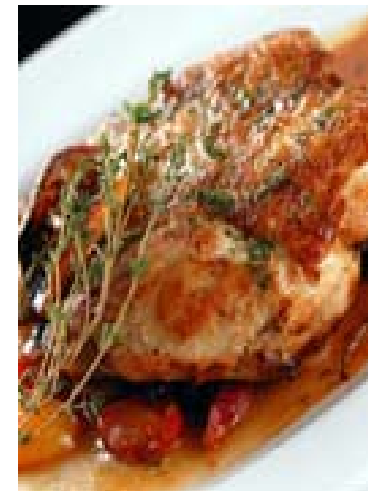
**syrah braised short ribs**  
goat cheese polenta

**combination dinner** **\$75**  
grilled filet  
caramelized shallots

**pan seared airline chicken breast**  
lemon sage and pearl onions

## beverages

	<i>(per item)</i>
soda	<b>\$5</b>
bottled water	<b>\$5</b>
flavored water	<b>\$6</b>
red bull	<b>\$7</b>
pellegrino	<b>\$7</b>



## SAN FRANCISCO AIRPORT MARRIOTT WATERFRONT

1800 Old Bayshore Hwy | Burlingame | CA 94010

650.692.9100 | www.marriott.com/SFOBG

# events by Marriott

breakfast

breaks

lunch

reception

DINNER

beverage

technology info

> plated > buffet

## dinner buffet

buffets include royal cup dakota roast coffee and organic bigelow tea

### turkey delight

\$55

buttermilk biscuits with honey butter

mixed green salad with ranch and italian dressings

roasted turkey breast with giblet gravy and sourdough, sausage,

cornbread pudding

butternut squash ravioli

candied sweet potatoes

green bean almondine

deep dish apple pie, cinnamon whipped cream

german chocolate cake

### all american

\$56

fresh cornbread with roasted corn and jalapeños

spinach salad with bermuda onions, carrots and cherry tomatoes,  
citrus vinaigrette

bacon wrapped meatloaf, spicy ketchup glaze, mushroom gravy

smothered chicken

roasted garlic mashed potatoes with chives

creamy macaroni and three cheeses: white cheddar, american  
and parmesan

rosemary and honey glazed carrots

pecan pie

strawberry shortcake



25 person minimum for buffets. guarantees with less than 25 will incur a fee of \$125.

2 hour maximum service.

**SAN FRANCISCO AIRPORT MARRIOTT WATERFRONT**

1800 Old Bayshore Hwy | Burlingame | CA 94010  
 650.692.9100 | www.marriott.com/SFOBG

# events by Marriott

breakfast      breaks      lunch      reception      DINNER      beverage      technology      info

> plated    > buffet

buffets include royal cup dakota roast coffee and organic bigelow tea

**a taste of san francisco      \$66**

- assorted breads and rolls
- roasted seasonal vegetable antipasto
- mixed greens, tuscan artichoke, english cucumber, tomatoes, goat cheese thyme dressing
- pistachio pesto crusted chicken
- braised short ribs with thyme demi glaze
- oven roasted baby squash
- goat cheese and fresh herb polenta
- assorted petite cakes and mousses
- mini parfaits

**beverages**

	<i>(per item)</i>
soda	<b>\$5</b>
bottled water	<b>\$5</b>
flavored water	<b>\$6</b>
red bull	<b>\$7</b>
pellegrino	<b>\$7</b>

**bayside buffet      \$74**

- assorted breads and rolls
- grilled hearts of romaine, focaccia croutons, kalamatta olives, anchovy vinaigrette
- caprese skewer salad with port balsamic glaze
- lemon rosemary roasted quartered chicken, citrus au jus
- salmon a la plancha, grapefruit citrus beurre blanc
- sliced leg of lamb, rosemary au jus, mint-roasted garlic gremolata
- oven roasted red potatoes
- honey glazed parisian carrots, pearl onions
- banana foster pie
- tiramisu



25 person minimum for buffets. guarantees with less than 25 will incur a fee of \$125. 2 hour maximum service.

breakfast

breaks

lunch

reception

DINNER

beverage

technology

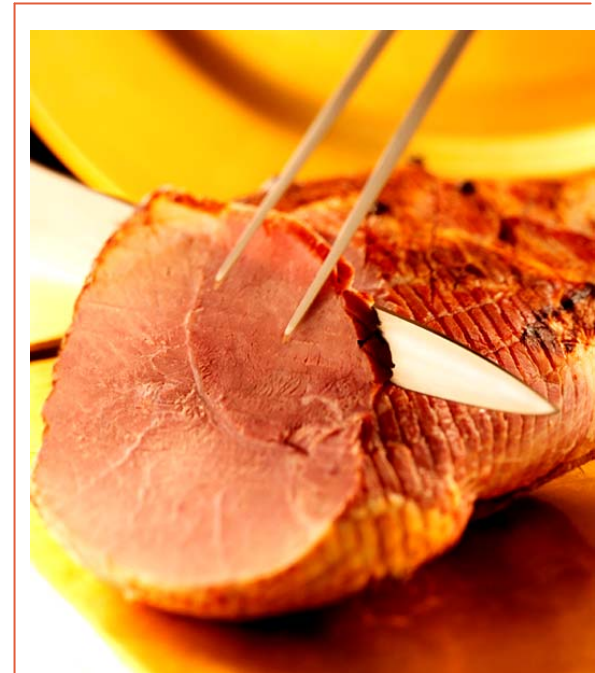
info

> plated > buffet

## dinner buffet carving station enhancements

- \*chile maple glazed pork tenderloin with wonnies sweet and spicy sauce \$8
- \*roasted turkey with cranberry chutney \$9
- \*baked ham with apricot brandy sauce \$9
- \*roasted leg of lamb served with sage and rosemary jus \$10
- \*dry rubbed rib-eye roll with mesa barbeque sauce \$12

\*\$125 attendant fee applies to each item



SAN FRANCISCO AIRPORT MARRIOTT WATERFRONT

1800 Old Bayshore Hwy | Burlingame | CA 94010

650.692.9100 | www.marriott.com/SFOBG

events by Marriott

# beverage

breakfast

breaks

lunch

reception

dinner

BEVERAGE

technology

info



## ENJOY

- whisky
- scotch
- vodka
- gin
- martini
- mojito
- red wine
- white wine
- champagne

SAN FRANCISCO AIRPORT MARRIOTT WATERFRONT

1800 Old Bayshore Hwy | Burlingame | CA 94010  
 650.692.9100 | www.marriott.com/SFOBG

# events by Marriott

breakfast      breaks      lunch      reception      dinner      BEVERAGE      technology      info

> bars      > wines



## white wines and champagne

### blush to light intensity

la terre chardonnay	\$34
aria estate brut	\$35
beringer white zinfandel	\$36
meridian pinot grigio	\$36
bv sauvignon blanc	\$38
meridian chardonnay	\$40
mumm cuvee napa	\$48
cakebread chardonnay	\$85

## red wines

### blush to light intensity

bv pinot noir	\$35
estancia pinot noir, pinnacles ranches	\$42

## red wines

### medium to full intensity

bv cabernet sauvignon	\$34
bv century cellars merlot	\$36
meridian merlot	\$36
meridian cabernet sauvignon	\$36
clos du bois cabernet sauvignon	\$39
clos du bois merlot	\$40
estancia cabernet sauvignon	\$44
franciscan cabernet sauvignon	\$60

2011. Marriott International. All Rights Reserved. Marriott Confidential & Proprietary Information

**SAN FRANCISCO AIRPORT MARRIOTT WATERFRONT**

1800 Old Bayshore Hwy | Burlingame | CA 94010  
 650.692.9100 | www.marriott.com/SFOBG

# events by Marriott

breakfast      breaks      lunch      reception      dinner      BEVERAGE      technology      info

> bars      > wines



## premium

- smirnoff vodka
- jose cuervo gold tequila
- canadian club blended whisky
- j&b scotch
- maker's mark bourbon
- bacardi rum
- beefeater gin
- korbel brandy
- cruzan aged light rum
- gordon's gin
- gordon's vodka
- grant's family reserve scotch
  
- jim beam white label bourbon

## top shelf

- grey goose
- patron
- crown royal
- johnny walker black
- jack daniels
- captain morgan
- tanqueray
- courvoisier vs
- bacardi superior rum
- canadian club whisky
- jose cuervo gold tequila



## cash bar

(prices per beverage)

- |                          |      |
|--------------------------|------|
| martini pour   premium   | \$11 |
| cocktails   premium      | \$10 |
| martini pour   top shelf | \$12 |
| cocktails   top shelf    | \$11 |
| cordials                 | \$11 |
| domestic beer            | \$6  |
| premium beer             | \$7  |
| house wine               | \$10 |
| premium wine             | \$11 |
| bottled water            | \$5  |
| soda                     | \$5  |
| juice                    | \$5  |

## hosted bar

(prices per beverage)

- |                          |        |
|--------------------------|--------|
| martini pour   premium   | \$9    |
| cocktails   premium      | \$8.5  |
| martini pour   top shelf | \$10   |
| cocktails   top shelf    | \$9.5  |
| cordials                 | \$9    |
| domestic beer            | \$5.75 |
| premium beer             | \$6.25 |
| house wine               | \$8.5  |
| bottled water            | \$5    |
| soda                     | \$5    |
| juice                    | \$5    |



2011. Marriott International. All Rights Reserved. Marriott Confidential & Proprietary Information

Prices are per person unless otherwise noted. A customary 24% taxable service charge and sales tax (currently 8.25%) will be added to prices

## SAN FRANCISCO AIRPORT MARRIOTT WATERFRONT

1800 Old Bayshore Hwy | Burlingame | CA 94010  
650.692.9100 | www.marriott.com/SFOBG

# events by Marriott

breakfast

breaks

lunch

reception

dinner

BEVERAGE

technology info

> bars > wines



### host bar packages

(25 guest minimum , prices per person)

#### full bar

package includes full bar setups and are priced per person

	premium	top shelf
1st hour	\$16	\$18
2nd hour	\$11	\$13
each additional hour	\$9	\$11

#### beer and wine bar

package includes assorted domestic and international beers

	domestic	international
1st hour	\$16	\$ 15
2nd hour	\$14	\$ 13
each additional hour	\$10	\$ 9

a \$150 bartender fee will apply up to 3 hours.  
\$75 per bar for each additional hour

SAN FRANCISCO AIRPORT MARRIOTT WATERFRONT

1800 Old Bayshore Hwy | Burlingame | CA 94010

650.692.9100 | www.marriott.com/SFOBG

events by Marriott

# technology

breakfast

breaks

lunch

reception

dinner

beverage

TECHNOLOGY

info



## FLAWLESS

lights  
camera  
action

**SAN FRANCISCO AIRPORT MARRIOTT WATERFRONT**

1800 Old Bayshore Hwy | Burlingame | CA 94010  
 650.692.9100 | www.marriott.com/SFOBG

# events by Marriott

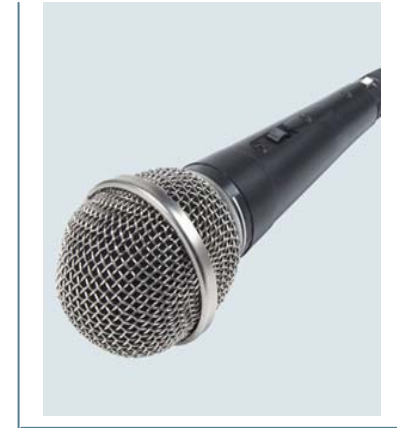
breakfast      breaks      lunch      reception      dinner      beverage      TECHNOLOGY      info

## meeting accessories

flipchart with markers	\$48
masking tape	\$7
easel	\$12
message board	\$22
whiteboard with markers	\$38
projector stand	\$20
utility cart with skirt	\$22
laser pointer	\$38
wireless mouse	\$55
walkie talkies	\$40
extension cord	\$20
power strip	\$20
pipe & black drape	\$20/foot

## microphones

wireless	
handheld or lavalier	\$150
wired podium	\$60
wired lavalier	\$60
wired tabletop	\$60
wired standing	\$60
4 channel mixer (required for 2-4 microphones)	\$60
8 channel mixer (required for 5-8 microphones)	\$120
16 channel mixer (required for 9-16 microphones)	\$160
patch to house sound (included with all audio equipment provided by hotel. required for all outside audio equipment)	\$95



## audio equipment

portable cassette/CD player	\$80
component CD player	\$60
component cassette	\$60
blank audio cassette tape	\$8
powered speaker	\$85
large sound system	call

2011. Marriott International. All Rights Reserved. Marriott Confidential & Proprietary Information

**SAN FRANCISCO AIRPORT MARRIOTT WATERFRONT**

1800 Old Bayshore Hwy | Burlingame | CA 94010  
 650.692.9100 | www.marriott.com/SFOBG

# events by Marriott

breakfast      breaks      lunch      reception      dinner      beverage      TECHNOLOGY      info



## screens

appropriate tripod (6' – 8')	\$130
10'x10' cradle	\$150
6'x8' fast fold	\$185
9'x12' fast fold	\$250
7.5'x10' fast fold	\$225

## video equipment

¾" player	\$100
DVD player	\$130
VHS player	\$85
VHS camcorder	\$200
VHS blank video tape	\$10
8" preview monitor	\$60
27" TV	\$180
video distribution amp	\$55

## communications

speaker phone with outside phone line	\$180
outside phone line	\$85
modem line	\$85
direct inward dial line	\$160
*wired/wireless high speed	\$200
*additional wired connectivity	\$120
*additional wireless connectivity	\$30

\*high speed lines are charged by number of users

## SAN FRANCISCO AIRPORT MARRIOTT WATERFRONT

1800 Old Bayshore Hwy | Burlingame | CA 94010

650.692.9100 | www.marriott.com/SFOBG

# events by Marriott

breakfast

breaks

lunch

reception

dinner

beverage

TECHNOLOGY

info



### data equipment

folsom seamless switcher	\$425
sony 1024 scan converter/switcher	\$260
extron 202 computer interface	\$120
RGBHV distribution amp	\$85
VGA distribution amp	\$85
20" data monitor	\$185
32" lcd monitor	\$320
42" plasma monitor	\$520

### installation and labor

technician rate per hour (minimum of 4 hours)	
mon-fri 8am to 5pm	\$75
mon-fri 5pm to 8am	\$100
sat, sun & holidays	\$125
specialist rate per hour	
mon-fri 8am to 5pm	\$100
mon-fri 5pm to 8am	call for quote
sat, sun and holidays	call for quote

breakfast      breaks      lunch      reception      dinner      beverage      TECHNOLOGY      info

## packages



### computer data projection

board room LCD: includes 3000 lumen projector, tripod screen, and cords \$600

ballroom LCD: includes 5000 lumen projector, screen (up to a 10' cradle), and cords \$700

LCD support: includes screen, cart, extension cord, and power strips safely taped and technical set up assistance \$175

### 35mm slide projector

35mm projector: includes kodak ektagraphic III 35mm slide projector, tripod screen, wireless remote, projection stand, 4"-8" zoom lens, slide tray, and all ac extension cords \$140

### overhead projector

overhead projector: includes projector, tripod screen, cart, and all ac cords safely taped \$135

### video presentation

27" TV/VCR \$235

27" TV/DVD \$265

## SAN FRANCISCO AIRPORT MARRIOTT WATERFRONT

1800 Old Bayshore Hwy | Burlingame | CA 94010

650.692.9100 | www.marriott.com/SFOBG

# events by Marriott

breakfast

breaks

lunch

reception

dinner

beverage

TECHNOLOGY

info

### AUDIO VISUAL EQUIPMENT:

Marriott Event Technology is the preferred Audio/Visual provider for the San Francisco Airport Marriott Hotel Waterfront. Please be advised that should you utilize the services of an outside Audio/Visual provider, that company must meet the following minimum criteria in order to conduct business at the San Francisco Airport Marriott Hotel Waterfront.

Outside Audio/Visual provider must maintain at its' own cost and expense the following insurance coverage's:

- Comprehensive general liability insurance, including contractual liability and liability for personal injury, bodily injury, property damage, and completed operations liability with a combined single limited of not less than \$1,500,000.00 each occurrence.
- Automobile liability insurance, including all owned, non-owned, and hired vehicles used in conjunction with the performance of Audio/Visual service to (name of group) for bodily injury or property damage, with a combined single limit of not less than \$1,000,000.00 each occurrence.

Outside Audio/Visual provider must execute Vendor's Release and Indemnification, which is attached here as Exhibit "A".

A facility patch fee of \$0.15 (per square foot per room per day) will be charged for all rooms utilized to cover equipment patch-in and utility expenses.

Should your A/V provider not be present when a guest requires assistance, you will be charged \$175.00 for our LCD Support Package which includes a power strip, extension cord, and technician set-up. If additional requirements are needed, an hourly rate of \$75.00 per hour (minimum four hours) will be charged for the services of a Marriott technician.



SAN FRANCISCO AIRPORT MARRIOTT WATERFRONT

1800 Old Bayshore Hwy | Burlingame | CA 94010  
650.692.9100 | www.marriott.com/SFOBG

events by Marriott

breakfast      breaks      lunch      reception      dinner      beverage      TECHNOLOGY      info

# we care – be well

## h1n1 prevention kit \$75 per unit per day



2011. Marriott International. All Rights Reserved. Marriott Confidential & Proprietary Information

Prices are per person unless otherwise noted. A customary 24% taxable service charge and sales tax (currently 8.25%) will be added to prices

## we care – be well h1n1 prevention kit

- The United States Center for Disease control states that 80% of all infectious diseases are spread by means of the hands.
- Big businesses are spending time and money trying to limit the H1N1 flu pandemic impact.
- As a first line of defense, hand sanitizers, disinfectant wipes should be available in order to protect event attendees.
- 1 Unit services 20-60 guests
- Units are placed near entrances, or break and dining rooms.
- The sponsor's name is displayed on the unit.
- Allows attendees to know the sponsor is in tune with current public health concerns.
- It's Green and ECO friendly with no paper towels required.
- The impact of sanitizing can reduce employee sick days and increase general health.

## SAN FRANCISCO AIRPORT MARRIOTT WATERFRONT

1800 Old Bayshore Hwy | Burlingame | CA 94010  
650.692.9100 | [www.marriott.com/SFOBG](http://www.marriott.com/SFOBG)

# events by Marriott

## info

breakfast

breaks

lunch

reception

dinner

beverage

technology

INFO



## CONVEY

flexible  
express  
communicate  
exchange  
converse

## SAN FRANCISCO AIRPORT MARRIOTT WATERFRONT

1800 Old Bayshore Hwy | Burlingame | CA 94010

650.692.9100 | www.marriott.com/SFOBG

# events by Marriott

breakfast

breaks

lunch

reception

dinner

beverage

technology

INFO

All prices are subject to change. Confirmation of menu prices will be made by our Event and Sales Managers.

### Labor charges

Our menu prices are based on meal functions with round tables of (10) guests each. Should your group require round tables of (8) guests each, a charge will apply for the additional service staff required. The fee for additional servers, attendants, and cocktail servers is \$125.00 per server/per event. An additional \$150.00 service charge will be applicable for any meal guarantee of less than (25) guests. A \$150.00 bartender fee per bar will apply for up to (3) hours. There will be a \$300.00 charge per hour for events that exceed (6) hours, not to exceed 12:00 a.m.

### Service charge

A current Service Charge of 24.00% will be added to all food, hosted beverage, and Audio Visual prices. The Service Charge is subject to State Sales Tax (currently 8.25%).

### Menu pricing

Menu prices are subject to change without notice. Menu pricing can be confirmed no earlier than 6 months prior to your event, unless otherwise specified on your contract or Banquet Event Orders.

### Decorations

Décor should be arranged through the hotel or hotel approved vendors. Any outside vendors must be approved by the Hotel. For best results, please let our professionals assist you in coordinating arrangements for themes and theme props, florals, and any ambience enhancements.

### Entertainment

Entertainment should be arranged with your Catering Specialist. We will happily coordinate your entertainment needs or recommend proven agencies familiar with the Bay Area and our hotel.

### Guarantees

In order to make your Banquet a success, please notify your Event Manager of the number of guests attending your function no later than (3) working days in advance. This number will be considered your minimum guarantee and may not be lowered. If we do not hear from you within this timeframe, your original expected number will automatically become your guarantee.

### Social Events

Special pricing may apply to Social Events and/or Weekend Evening Events such as Dinner/Dances, Bar/Bat Mitzvahs, Weddings, and other similar events. Wedding Packages and other special event arrangements are available. Please consult our Catering Specialist. The hotel will be prepared to accommodate 3% over your final guarantee.