

## TAKING PEAK PERFORMANCE TO NEW HEIGHTS.



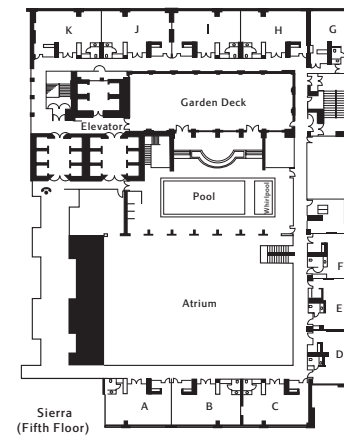
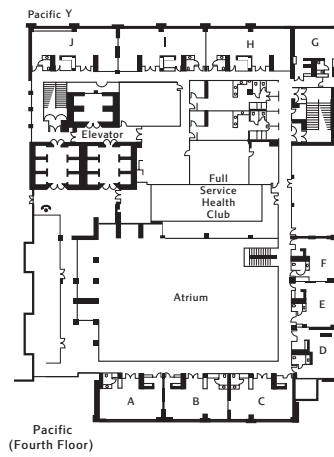
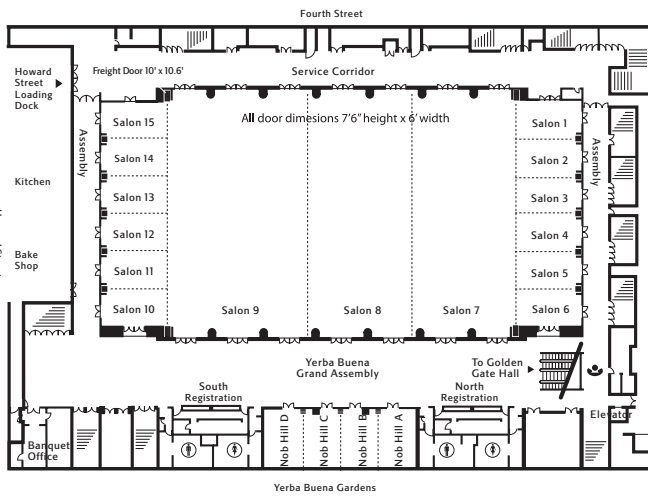
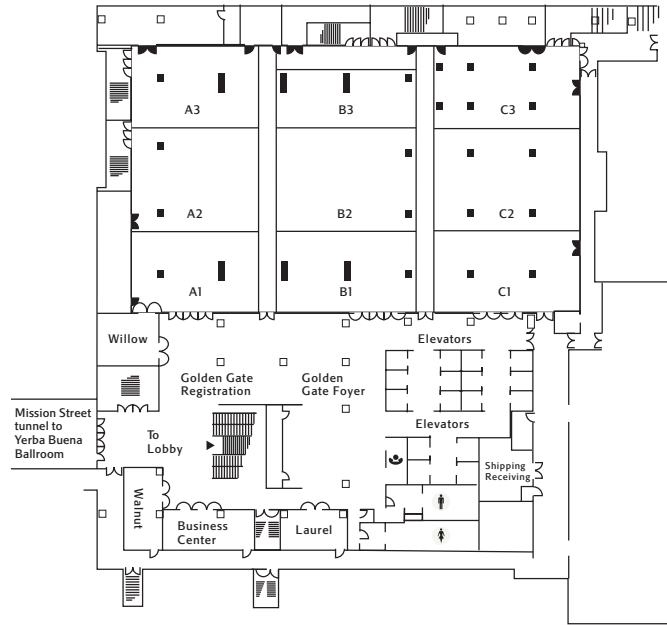
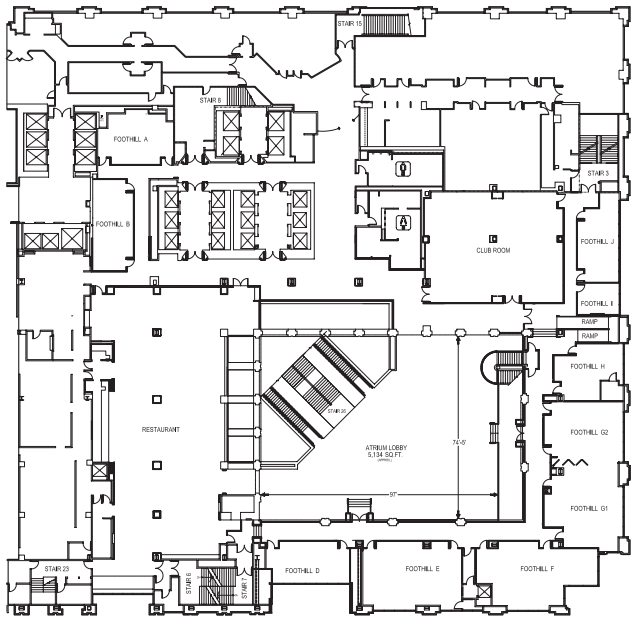
Rising 39 stories into the San Francisco skyline, the San Francisco Marriott® Marquis is just steps away from some of the city's top attractions, including Yerba Buena Gardens, world-class shopping on Union Square and AT&T Park, home of the San Francisco Giants. Enjoy magnificent views of downtown San Francisco from the hotel's 1,499 stylish guest rooms, including 137 suites, along with high-speed Internet access and Marriott's luxurious Revive® bedding. With 117,000 square feet of flexible meeting and banquet space and close proximity to the Moscone Convention Center, the San Francisco Marriott Marquis is a premier destination for both corporate and social events as well as large-scale conventions and exhibitions.

### SAN FRANCISCO MARRIOTT MARQUIS

55 Fourth Street  
San Francisco, CA 94103  
Phone 415.896.1600  
Fax 415.486.8101  
[Marriott.com/SFODT](http://Marriott.com/SFODT)

Meeting Room	Dimensions		Capacity					
	LxWxH	Sq. Feet	Theater	Schoolroom	Conference	U-Shape	Reception	Banquet
Golden Gate Hall	—	23,165	1,320	—	—	—	2,900	1,300
Section A	65x117x10	7,546	450	250	—	—	940	450
Salon A1	55x37x10	2,007	120	80	28	28	250	120
Salon A2	55x41x10	2,255	190	120	46	46	280	140
Salon A3	55x40x10	2,172	120	80	28	28	270	120
Section B	61x117x10	7,078	550	300	—	—	880	430
Salon B1	61x37x10	2,208	90	40	28	28	275	140
Salon B2	61x41x10	2,480	200	130	50	50	310	150
Salon B3	61x40x10	2,390	120	90	40	28	300	90
Section C	73x117x10	8,541	300	200	—	—	900	400
Salon C1	64x37x10	2,318	120	80	28	28	300	110
Salon C2	64x41x10	2,603	160	100	40	40	325	140
Salon C3	64x40x10	2,508	100	70	28	28	315	110
Golden Gate Foyer	—	7,633	—	—	—	—	950	—
Laurel	29x17x9	493	42	24	22	22	60	30
Walnut	17x35x9	577	60	40	28	28	70	30
Willow	27x23x9	621	70	40	22	22	75	40
Atrium Lobby	109x75x65	5,134	—	—	—	—	—	—
Club Room	56x45x11	2,414	250	60	40	44	254	150
Foothill Foyer	116x93x9	2,588	—	—	—	—	272	—
Foothill A	22x31x15	567	54	18	18	15	62	20
Foothill B	17x37x15	592	45	18	30	27	62	30
Foothill D	35x22x9	676	56	30	18	21	71	20
Foothill E	28x41x10	1,055	110	42	30	30	111	60
Foothill F	28x50x10	1,038	95	33	24	24	109	40
Foothill G	32x61x10	1,672	120	75	48	33	175	70
Foothill G1	32x35x10	949	75	24	24	15	99	30
Foothill G2	32x34x10	723	45	12	16	18	76	10
Foothill H	28x23x10	517	26	9	12	9	54	20
Foothill I	17x12x11	212	15	6	6	9	22	10
Foothill J	17x37x8	533	50	20	24	21	56	20
Pacific A	40x19x8	740	60	42	32	32	100	40
Pacific B	41x19x8	758	60	42	32	32	100	40
Pacific C	41x19x8	758	60	42	32	32	100	40
Pacific D	17x31x8	527	—	—	14	—	20	—
Pacific E	19x30x8	551	45	28	20	18	50	30

Meeting Room	Dimensions		Capacity					
	LxWxH	Sq. Feet	Theater	Schoolroom	Conference	U-Shape	Reception	Banquet
Pacific F	17x27x8	450	45	25	20	18	40	30
Pacific G	27x20x8	540	—	—	14	—	20	—
Pacific H	54x18x8	972	90	60	46	46	135	50
Pacific I	55x18x8	981	90	60	46	46	135	50
Pacific J	54x18x8	972	90	60	46	46	135	50
Sierra A	40x19x8	740	60	42	32	32	100	40
Sierra B	41x19x8	758	60	42	32	32	100	40
Sierra C	42x19x8	777	60	42	32	32	100	40
Sierra D	17x31x8	527	—	—	14	—	20	—
Sierra E	19x29x8	551	45	28	20	18	50	30
Sierra F	17x27x8	450	45	25	20	18	40	30
Sierra G	27x20x8	540	—	—	14	—	20	—
Sierra H	40x18x8	720	60	42	32	32	100	40
Sierra I	41x18x8	738	60	42	32	32	100	40
Sierra J	41x18x8	738	60	42	32	32	100	40
Sierra K	40x18x8	720	60	42	32	32	100	40
Grand Assembly	—	12,543	—	—	—	—	1,650	—
Yerba Buena Ballroom	281x148x25	39,865	4,300	2,360	—	—	5,500	3,000
Salon 1	38x21x18	798	80	45	30	30	110	60
Salon 2	38x23x18	855	80	45	30	30	110	60
Salon 3	38x22x18	836	80	45	30	30	110	60
Salon 4	38x23x18	855	80	45	30	30	110	60
Salon 5	38x23x18	855	80	45	30	30	110	60
Salon 6	38x22x18	836	80	45	30	30	110	60
Salon 7	60x148x25	8,776	890	540	—	—	1150	650
Salon 8	60x148x25	8,850	890	540	—	—	1175	650
Salon 9	83x148x25	12,169	1,150	700	—	—	1,600	900
Salon 10	38x22x18	836	80	45	30	30	110	60
Salon 11	38x23x18	855	80	45	30	30	110	60
Salon 12	38x23x18	855	80	45	30	30	110	60
Salon 13	38x22x18	836	80	45	30	30	110	60
Salon 14	38x23x18	855	80	45	30	30	110	60
Salon 15	38x23x18	798	80	45	30	30	110	60
Nob Hill A, B, C, D (each)	22x32x13	704	80	45	28	28	90	60
Nob Hill A-D (combined)	88x32x13	2,816	320	140	76	76	360	240





#### ACCOMMODATIONS

39 floors • 1,362 guest rooms • 137 suites • Concierge Level

#### RESTAURANTS & LOUNGES

*Mission Steak*, highlighting California cuisine (B,L,D) • *Bin 55*, serving hors d'oeuvres, and 55 California wines • *Fourth Street Bar & Deli*, showcasing sporting events on flat-screen LCD HDTVs, • *The View*, offering cocktails, light snacks and a spectacular view from the 39th floor • *Starbucks*®

#### RECREATION & LEISURE

Indoor pool • Spa & fitness center • Bike and hiking trails nearby • 4 golf courses within a 12- mile radius • Horseback riding trails nearby • Kayak and sailing nearby

#### ATTRACTIONS

Alcatraz Island • Angel Island • Chinatown • Fisherman's Wharf • Ghirardelli Square • Golden Gate Bridge & Park • Pier 39 • San Francisco Zoo • Union Square • Yerba Buena Gardens

#### GUEST SERVICES

Committed to a smoke- free environment • High-speed Internet access in public areas • Full-service business center • Cash machine/ATM • Concierge desk • Safe-deposit boxes at front desk • Foreign currency exchange • Newspaper delivered to room • Newspaper in lobby • Valet dry-cleaning service

#### MEETING FACILITIES

63 meetings rooms • 117,000 square feet of total meeting space • Wired and wireless Internet access • Largest meeting room is Yerba Buena Ballroom with maximum meeting space of 39,865 square feet and maximum seating capacity of 4,300 • Exceptional catering capabilities

#### LOCATION

Prominently located in the heart of downtown San Francisco • Steps away from the Moscone Convention Center and Union Square • Walking distance to major sites, shopping districts and attractions

## SAN FRANCISCO MARRIOTT MARQUIS

55 Fourth Street  
San Francisco, CA 94103  
Phone 415.896.1600  
Fax 415.486.8101  
Marriott.com/SFODT