

events by Marriott



breakfast



breaks



lunch



reception



dinner



package

beverage

healthy

technology

info

crafted for you

MARRIOTT FISHERMAN'S WHARF SAN FRANCISCO

1250 Columbus Avenue | San Francisco | California 94133

www.marriott.com/sfofw

SAN FRANCISCO MARRIOTT FISHERMAN'S WHARF

1250 Columbus Avenue | San Francisco | CA 94133

415.775.7555 | www.marriott.com/sfofw

events by Marriott

breakfast

BREAKFAST

breaks

lunch

reception

dinner

package

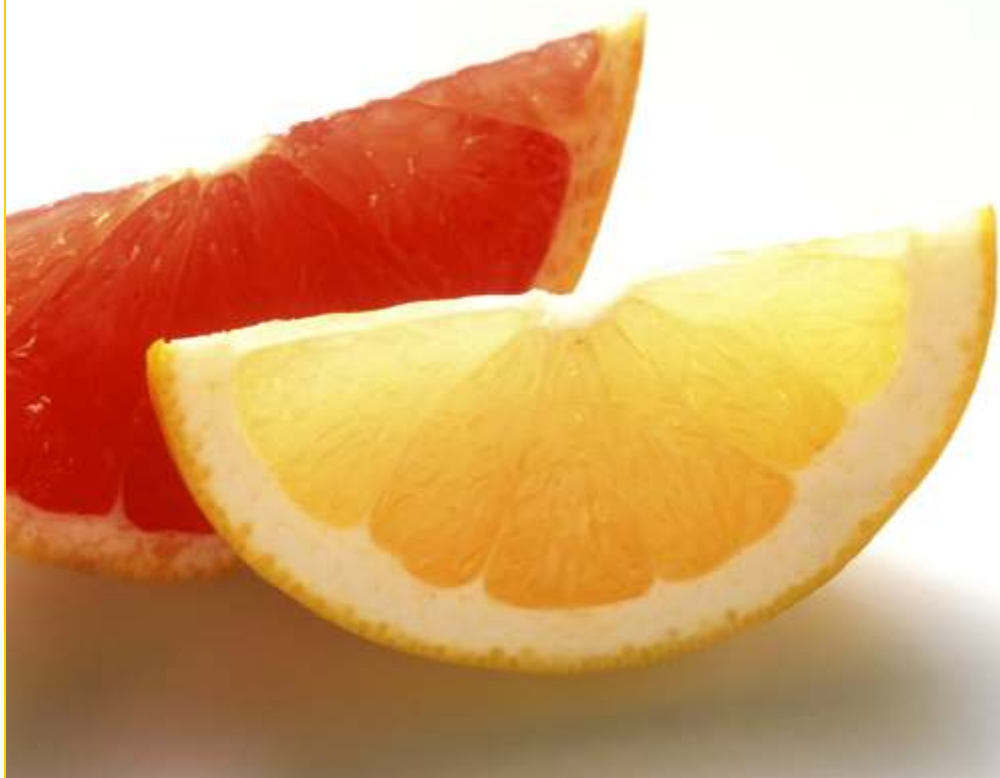
beverage

healthy

technology

info

> plated > buffet



SEASON

- cereals
- juices
- coffee
- teas
- pastries
- milk
- yogurt
- eggs

© 2010 Marriott International. All Rights Reserved.

Prices are per person. A customary 23% taxable service charge and sales tax will be added to prices

[home](#) < >

SAN FRANCISCO MARRIOTT FISHERMAN'S WHARF

1250 Columbus Avenue | San Francisco | CA 94133

415.775.7555 | www.marriott.com/sfofw

events by Marriott

BREAKFAST **breaks** **lunch** **reception** **dinner** **package** **beverage** **healthy** **technology** **info**

[> plated](#) [> buffet](#)

continental breakfast

marquis | \$33.50

fresh orange, grapefruit and cranberry juice

sliced fresh seasonal fruits and berries

yogurts with granola

fresh baked morning pastries

bagels with cream cheese, butter, fruit preserves

coffee and tea service

elite | \$28.40

fresh orange, grapefruit and cranberry juice

fresh baked morning pastries

coffee and tea service

enhancements | per person

fruit berry parfait | \$5.50

hot and cold cereals | \$7.15

smoked salmon | \$13.15



2010. Marriott International. All Rights Reserved.

Prices are per person. A customary 23% taxable service charge and sales tax will be added to prices

[home](#) [<](#) [>](#)

SAN FRANCISCO MARRIOTT FISHERMAN'S WHARF

1250 Columbus Avenue | San Francisco | CA 94133
415.775.7555 | www.marriott.com/sfofw

events by Marriott

BREAKFAST breaks lunch reception dinner package beverage healthy technology info

[> plated](#) [> buffet](#)

plated breakfast

all entrees includes

fresh orange juice

fresh baked morning pastries

coffee and tea service

the all american | \$32.80

scrambled eggs with crisp bacon, sausage links, breakfast potatoes and grilled fruit

eggs benedict | \$33.95

poached eggs, canadian bacon with hollandaise on a toasted english muffin, breakfast potatoes and grilled fruit

sourdough french toast | \$33.95

san francisco sourdough bread dipped in grand marnier egg batter, grilled caramelized apples, choice of maple pepper bacon, sausage links or chicken apple sausage



SAN FRANCISCO MARRIOTT FISHERMAN'S WHARF

1250 Columbus Avenue | San Francisco | CA 94133
415.775.7555 | www.marriott.com/sfofw

events by Marriott

BREAKFAST breaks lunch reception dinner package beverage healthy technology info

> plated > buffet

breakfast plated

egg white vegetable frittata | \$35.90

pan baked with tomato basil relish, spinach, shiitake and portobello mushrooms, sautéed fennel and shallots served with assorted breakfast breads,



crunchy french toast | \$35.90

whole wheat bread dipped in eggbeaters and corn flakes

grilled and topped with fresh strawberries and bananas

served with light country maple syrup

breakfast served with assorted juices and coffee, selection of red bull and low carb beverages available

grilled chicken benedict | \$37.00

flame broiled chicken breast topped with poached eggs and hollandaise sauce

served with thick cut beefsteak tomatoes

SAN FRANCISCO MARRIOTT FISHERMAN'S WHARF

1250 Columbus Avenue | San Francisco | CA 94133
415.775.7555 | www.marriott.com/sfofw

events by Marriott

BREAKFAST **breaks** **lunch** **reception** **dinner** **package** **beverage** **healthy** **technology** **info**



breakfast buffet > plated > buffet

silver | \$39.50

fresh orange, grapefruit and cranberry juices

fresh baked morning pastries

sliced fresh fruit

breakfast sandwich to include scramble eggs, ham and cheese

coffee and tea service

platinum | \$41.60

fresh orange, grapefruit, and cranberry juices

fresh baked morning pastries

bagels with cream cheese, butter, fruit preserves

hot and cold cereals

sliced fresh fruit

scrambled eggs, breakfast potatoes

crisp bacon and chicken sausage

coffee and tea service

enhancements | per person

chefs gourmet quiche | \$15.40

omelets to order | \$16.80

chef attendant fee will apply

SAN FRANCISCO MARRIOTT FISHERMAN'S WHARF

1250 Columbus Avenue | San Francisco | CA 94133
415.775.7555 | www.marriott.com/sfofw

events by Marriott

BREAKFAST **breaks** **lunch** **reception** **dinner** **package** **beverage** **healthy** **technology** **info**

> **plated** > **buffet**

breakfast buffets

low fat | \$40.50

- sliced fresh seasonal fruits and berries
- assorted dry cereals with non-fat milk
- low-fat waffle with country maple syrup
- roasted pepper vegetable egg white frittata
- low fat cottage cheese and assorted sliced breads

low cholesterol | \$40.50

- sliced seasonal fruits and berries
- assorted dry cereals with non-fat milk
- hot oatmeal and crunchy french toast
- scrambled egg beaters
- honey and bran muffins, toasted english muffins and bagels

carb conscious | \$43.05

- fresh roma tomatoes and mozzarella platter
- sliced deli meats and cheeses
- applewood bacon and chicken sausage
- scrambled eggs with cheddar cheese
- grilled roasted vegetables
- buffets served with assorted juices



2010. Marriott International. All Rights Reserved.

Prices are per person. A customary 23% taxable service charge and sales tax will be added to prices

[home](#) < >

SAN FRANCISCO MARRIOTT FISHERMAN'S WHARF

1250 Columbus Avenue | San Francisco | CA 94133

415.775.7555 | www.marriott.com/sfofw

events by Marriott

breaks

breakfast

BREAKS

lunch

reception

dinner

package

beverage

healthy

technology

info



DELIGHT

- muffins
- juices
- nuts
- popcorn
- pretzels
- soda

© 2010 Marriott International. All Rights Reserved.

Prices are per person. A customary 23% taxable service charge and sales tax will be added to prices

[home](#) < >

SAN FRANCISCO MARRIOTT FISHERMAN'S WHARF

1250 Columbus Avenue | San Francisco | CA 94133
415.775.7555 | www.marriott.com/sfofw

events by Marriott

[breakfast](#) [BREAKS](#) [lunch](#) [reception](#) [dinner](#) [package](#) [beverage](#) [healthy](#) [technology](#) [info](#)

[> am – morning](#) [> pm - afternoon](#)

coffee and refreshment breaks

bay to breakers | \$26.75

fresh fruit kebobs with honey-yogurt dipping sauce
fruit flavored yogurts, smoothies and granola bars
sparkling water and bottled water

sweet servings | \$26.75

individual servings of Haagen-Dazs ice cream, and sorbet bars.
cupcakes, mini-Ghirardelli chocolates
coffee and tea service, assorted soft drinks

escape to alcatraz | \$26.75

assorted fresh baked cookies and brownies
chocolate milk, coffee and teas service, assorted soft drinks



© 2010 Marriott International. All Rights Reserved.

Prices are per person. A customary 23% taxable service charge and sales tax will be added to prices

[home](#) < >

SAN FRANCISCO MARRIOTT FISHERMAN'S WHARF

1250 Columbus Avenue | San Francisco | CA 94133
415.775.7555 | www.marriott.com/sfofw

events by Marriott

[breakfast](#) [BREAKS](#) [lunch](#) [reception](#) [dinner](#) [package](#) [beverage](#) [healthy](#) [technology](#) [info](#)

[> am – morning](#) [> pm - afternoon](#)

coffee and refreshment breaks

the world series | \$26.75

peanuts, popcorn and cracker jacks
assorted candy bars and warm soft pretzels with mustard
assorted soft drinks and bottled water

sonoma splash | \$28.75

local artisan cheese platter to include humboldt fog cheese, point Reyes blue and mezzo secco dry jack cheese, fresh seasonal fruit, garnished with country olive medley and mixed nuts
sonoma sparkling cider, assorted soft drinks and mineral water

summer of love | \$26.75

mini grilled cheese sandwiches with tomato soup
chips and brownies
coffee and tea service, assorted soft drinks



SAN FRANCISCO MARRIOTT FISHERMAN'S WHARF

1250 Columbus Avenue | San Francisco | CA 94133
415.775.7555 | www.marriott.com/sfofw

events by Marriott

[breakfast](#)

BREAKS

[lunch](#)

[reception](#)

[dinner](#)

[package](#)

[beverage](#)

[healthy](#)

[technology](#)

[info](#)

> [am - morning](#) > [pm - afternoon](#)

a la carte



beverages

assorted soft drinks | \$5.00 each

bottled water | \$4.50 each

VOSS bottled water | \$5.50 each

bottled fresh juices | \$5.75 each

red bull | \$5.75 each
regular and sugar free

house coffee | \$85 gallon

tropical fruit punch | \$5.00 each

sonoma sparkling cider | \$5.50
each

refreshments

whole seasonal fruit | \$5.75 per
person

clif/ granola bars | \$65.00 per
dozen

assorted individual yogurts | \$5.45
per person

fresh baked morning pastries
| \$54 dozen

assorted bagels | \$58 dozen

assorted cookies | \$54 dozen
and brownies

bottled fruit smoothies | \$6.00

© 2010 Marriott International. All Rights Reserved.

Prices are per person. A customary 23% taxable service charge and sales tax will be added to prices

[home](#) < >

SAN FRANCISCO MARRIOTT FISHERMAN'S WHARF

1250 Columbus Avenue | San Francisco | CA 94133

415.775.7555 | www.marriott.com/sfofw

events by Marriott

lunch

[breakfast](#)

[breaks](#)

LUNCH

[reception](#)

[dinner](#)

[package](#)

[beverage](#)

[healthy](#)

[technology](#)

[info](#)

[> plated](#) [> buffet](#) [> box](#)

ESSENCE

[salads](#)

[burgers](#)

[fish](#)

[beef](#)

[pasta](#)

[desserts](#)

[sandwiches](#)

[beverages](#)

© 2010 Marriott International. All Rights Reserved.

Prices are per person. A customary 23% taxable service charge and sales tax will be added to prices

[home](#) [<](#) [>](#)

SAN FRANCISCO MARRIOTT FISHERMAN'S WHARF

1250 Columbus Avenue | San Francisco | CA 94133
415.775.7555 | www.marriott.com/sfofw

events by Marriott

[breakfast](#) [breaks](#) [LUNCH](#) [reception](#) [dinner](#) [package](#) [beverage](#) [healthy](#) [technology](#) [info](#)



[desserts](#) | [choose one](#)

chocolate mousse tartlets
strawberry exquisite
crème brulee cheesecake
fresh fruit tart
tiramisu
chocolate thunder

[lunch entrée salads](#)

[> plated](#) [> buffet](#) [> box](#)

[all salads include](#)

fresh baked bread service
coffee, tea, and iced tea service
dessert

[fisherman's wharf crab louis](#) | \$41.75

seasonal greens, crudité vegetables and dungeness crab

[lemon and oregano grilled shrimp](#) | \$40.53

romaine, tomato, cucumber, feta cheese and fresh chives

[pacific seafood cobb salad](#) | \$40.53

marinated wild shrimp and sea scallops with bacon, local point Reyes blue cheese, avocado and vine-ripe tomatoes on mixed field greens

[chicken or salmon north beach caesar salad](#) | \$40.48

choice of grilled lemon herb marinated chicken breast or salmon, sourdough croutons, parmesan cheese, sundried tomatoes and caesar dressing

SAN FRANCISCO MARRIOTT FISHERMAN'S WHARF

1250 Columbus Avenue | San Francisco | CA 94133
415.775.7555 | www.marriott.com/sfofw

events by Marriott

[breakfast](#) [breaks](#) [LUNCH](#) [reception](#) [dinner](#) [package](#) [beverage](#) [healthy](#) [technology](#) [info](#)

[> plated](#) [> buffet](#) [> box](#)



wine country boxed lunch | \$40.50

all lunches to include

specialty chips

fresh whole fruit

signature home baked cookies

bottle of spring water

sandwiches | choose two

napa valley

prosciutto, cappicola, salami and provolone cheese with green olive relish on bread

sonoma valley

lemon thyme grilled breast of chicken, smoked gouda, romaine, sundried tomato and pesto on focaccia

russian river valley

country baked ham, lorraine swiss, baby greens and honey mustard on pannini

alexander valley

roasted vegetables wrapped in a tortilla with hummus

salads | choose one

slow roasted eggplant and orzo salad with arugula

mediterranean cous cous salad

asian slaw with roasted peanuts

country new potato salad

SAN FRANCISCO MARRIOTT FISHERMAN'S WHARF

1250 Columbus Avenue | San Francisco | CA 94133
415.775.7555 | www.marriott.com/sfofw

events by Marriott

[breakfast](#) [breaks](#) **LUNCH** [reception](#) [dinner](#) [package](#) [beverage](#) [healthy](#) [technology](#) [info](#)

[> plated](#) [> buffet](#) [> box](#)

lunch entrees

grilled shrimp nicoise salad | \$43.05

warm grilled jumbo shrimp served on a bed of french beans
red and yellow tomatoes
butter lettuce and chopped egg tossed in dijon vinaigrette

miso glazed salmon | \$46.30

served on a bed of mixed tender greens
jasmine rice tossed with fresh tomatoes, cucumbers and carrots in lemongrass and rice wine broth
Includes red bull and low carb beverages

box lunches

dagwood wrap | \$43.05

salami, turkey, ham, provolone and mozzarella cheeses with tomato and peperoncinis wrapped in a soft tortilla
served with assorted cheeses and fresh crudités with onion cheese dip and cliff bar
assorted soft drinks

telegraph hill | \$43.05

grilled vegetables, roast turkey with tomatoes and balsamic vinegar wrapped in soft lavosh
served with green salad with fat-free raspberry dressing
fresh fruit salad and cookies
assorted soft drinks



SAN FRANCISCO MARRIOTT FISHERMAN'S WHARF

1250 Columbus Avenue | San Francisco | CA 94133

415.775.7555 | www.marriott.com/sfofw

events by Marriott

[breakfast](#)

[breaks](#)

[LUNCH](#)

[reception](#)

[dinner](#)

[package](#)

[beverage](#)

[healthy](#)

[technology](#)

[info](#)

[> plated](#) [> buffet](#) [> box](#)



lunch buffets

(minimum 25 people)

all buffets include

fresh baked bread service

coffee, tea and iced tea service

working lunch sandwich board | \$49.60

soup du jour

sliced turkey, salami, black forest ham, roasted beef

imported and domestic cheeses

bay shrimp ceviche, red potato salad, specialty chips

lettuce, tomato, pickles and red onions

focaccia, french baguette and slice sourdough breads

fresh fruit tarts

southwestern buffet | \$50.85

mixed organic greens with sonora ranch dressing

grilled sweet corn and black bean salsa with lime vinaigrette, shrimp ceviche

grilled chicken and beef fajitas, flour and corn tortillas

spanish rice, house made salsa, guacamole and sour cream

flan, churros

SAN FRANCISCO MARRIOTT FISHERMAN'S WHARF

1250 Columbus Avenue | San Francisco | CA 94133
415.775.7555 | www.marriott.com/sfofw

events by Marriott

[breakfast](#) [breaks](#) [LUNCH](#) [reception](#) [dinner](#) [package](#) [beverage](#) [healthy](#) [technology](#) [info](#)

[> plated](#) [> buffet](#) [> box](#)

lunch buffets

(minimum 25 people)

all buffets include

fresh baked bread service

coffee, tea and iced tea service

picnic at fisherman's wharf | \$50.85

shrimp louis, fresh minted fruit salad

barbecued baby back pork ribs and angus beef burgers

free range herb roasted breast of chicken and vegetarian burgers

lettuce, tomato, pickles and red onion

corn-on-the-cob, baked beans, biscuits and jalapeno cornbread

dutch apple tart, baked berries and almond tart

chintown | \$50.85

oriental chicken and mandarin orange salad, chinese slaw

assorted dim sum sampler served in bamboo steamer with assorted dipping sauces

gingered beef and vegetable stir fry, sweet and sour chicken

fried rice, fortune cookies



© 2010 Marriott International. All Rights Reserved.

Prices are per person. A customary 23% taxable service charge and sales tax will be added to prices

[home](#) [<](#) [>](#)

SAN FRANCISCO MARRIOTT FISHERMAN'S WHARF

1250 Columbus Avenue | San Francisco | CA 94133
415.775.7555 | www.marriott.com/sfofw

events by Marriott

[breakfast](#) [breaks](#) [LUNCH](#) [reception](#) [dinner](#) [package](#) [beverage](#) [healthy](#) [technology](#) [info](#)

[> plated](#) [> buffet](#) [> box](#)

Lunch buffets

(minimum 25 people)

all buffets include

fresh baked bread service

coffee, tea and iced tea service



san francisco north beach | \$50.85

minestrone or tomato florentine soup

caesar salad, vine ripened tomato and fresh buffalo mozzarella with port wine vinaigrette

italian meats, coppa, prosciutto, salami, imported cheeses and olives

chicken saltimbocca and baked vegetarian cannelloni

wild mushroom risotto, grilled fresh vegetables

assorted italian desserts

executive buffet | \$53.15

new england clam chowder or wild mushroom bisque

fresh asparagus and shaved fennel salad with pecorino and lemon basil vinaigrette

seared salmon with wild mushroom and white wine demi-glaze

grilled breast of chicken with lemon, garlic and fresh oregano

oven roasted yukon gold potatoes

grilled seasonal vegetables

assorted petit fours and crème brulee cheesecake

SAN FRANCISCO MARRIOTT FISHERMAN'S WHARF

1250 Columbus Avenue | San Francisco | CA 94133
415.775.7555 | www.marriott.com/sfofw

events by Marriott

[breakfast](#) [breaks](#) [LUNCH](#) [reception](#) [dinner](#) [package](#) [beverage](#) [healthy](#) [technology](#) [info](#)

[> plated](#) [> buffet](#) [> box](#)



carb conscious | \$53.55

- imported and domestic cheese, tuna nicoise salad
- chicken fajita lettuce wraps
- roast sirloin of beef with wild mushrooms
- baked eggplant ratatouille and blue lake green beans

lunch buffets

low cholesterol | \$53.55

- sliced fresh seasonal fruits and berries, mixed field greens with lemon vinaigrette
- spinach salad with orange and cumin yogurt dressing
- sage grilled chicken breast with roma tomatoes and fresh basil
- halibut provencal with sundried tomatoes and artichokes
- brown rice and steamed fresh vegetables

low fat | \$53.55

- sliced fresh seasonal fruits and berries
- baby mixed greens with raspberry vinaigrette
- tabbouleh salad and hummus with pita bread
- baked salmon with tomato-mint relish
- roasted potatoes, wild rice medley and freshly steamed vegetables

lunches served with red bull and low carb beverages

SAN FRANCISCO MARRIOTT FISHERMAN'S WHARF

1250 Columbus Avenue | San Francisco | CA 94133

415.775.7555 | www.marriott.com/sfofw

events by Marriott

[breakfast](#) [breaks](#) **LUNCH** [reception](#) [dinner](#) [package](#) [beverage](#) [healthy](#) [technology](#) [info](#)

[> plated](#) [> buffet](#) [> box](#)

plated lunches

all entrees to include

- choice of one starter and dessert
- fresh baked bread service
- coffee and tea service

starters | choose one

soups

- san francisco seafood chowder
- tomato basil with spinach chiffonade

napa valley field of greens

- belgium endive and mesclun greens with walnuts and crumbled roquefort cheese in a balsamic vinaigrette

north beach caesar salad

- romaine, sourdough croutons, parmesan cheese, sundried tomato, caesar dressing

sonoma coast market salad

- romaine, point Reyes local blue cheese, california cucumbers, heirloom tomatoes, roasted peppers, country olives, fresh basil with lemon chardonnay vinaigrette

desserts | choose one

- chocolate mousse tartlets
- strawberry exquisite
- crème brulee cheesecake
- fresh fruit tart
- tiramisu
- chocolate thunder



2010. Marriott International. All Rights Reserved.

Prices are per person. A customary 23% taxable service charge and sales tax will be added to prices

[home](#) [<](#) [>](#)

SAN FRANCISCO MARRIOTT FISHERMAN'S WHARF

1250 Columbus Avenue | San Francisco | CA 94133
415.775.7555 | www.marriott.com/sfofw

events by Marriott

[breakfast](#) [breaks](#) [LUNCH](#) [reception](#) [dinner](#) [package](#) [beverage](#) [healthy](#) [technology](#) [info](#)

[> plated](#) [> buffet](#) [> box](#)

plated luncheon entrees



flat iron steak | \$53.15

grilled and marinated with a wild mushroom cabernet demi-glaze chantilly mashed potatoes with parmesan cheese, haricot verts with tomato and basil

grilled chicken with lemon, garlic and oregano | \$46.20

marinated and grilled boneless breast of chicken, served with mediterranean brown rice and green beans

chicken saltimbocca | \$48.50

free range chicken breast, prosciutto, provolone, and fresh sage with a cabernet sauce, parmesan mashed potatoes and broccoli rabe

california white sea bass | \$52.05

roasted with olives and basil, new potatoes crushed with garlic chilies arugula with tomato vinaigrette

wild prawns venice | \$52.05

marinated and grilled with garlic, basil, virgin olive oil, saffron rice grilled garden vegetables

seared dover sole with tomato fumet and kalamate olives | \$49.60

served over roasted fingerling potatoes and broccoli rabe

farfalle with mix wild mushroom | \$46.20

tossed with tomato concasse, marsala wine, asparagus, parmesan cheese and a light cream sauce

SAN FRANCISCO MARRIOTT FISHERMAN'S WHARF

1250 Columbus Avenue | San Francisco | CA 94133

415.775.7555 | www.marriott.com/sfofw

events by Marriott

reception

[breakfast](#)

[breaks](#)

[lunch](#)

[RECEPTION](#)

[dinner](#)

[package](#)

[beverage](#)

[healthy](#)

[technology](#)

[info](#)



ESSENCE

- canapés
- shrimp
- wraps
- sushi
- bruschetta
- tenderloin
- dim sum
- oysters
- cheese

© 2010 Marriott International. All Rights Reserved.

Prices are per person. A customary 23% taxable service charge and sales tax will be added to prices

[home](#) < >

SAN FRANCISCO MARRIOTT FISHERMAN'S WHARF

1250 Columbus Avenue | San Francisco | CA 94133
415.775.7555 | www.marriott.com/sfofw

events by Marriott

[breakfast](#) [breaks](#) [lunch](#) [RECEPTION](#) [dinner](#) [package](#) [beverage](#) [healthy](#) [technology](#) [info](#)

[>hors d'oeuvre](#) [> station](#) [> themed](#)

reception selections

hot hors d' oeuvres (50 piece minimum order)



seared tuna with papaya salsa	\$6.55 per piece
mini beef wellington	\$6.25 per piece
mini chicken wellington	\$5.75 per piece
stuffed oysters rockefeller	\$6.55 per piece
habanero chicken wings (spicy)	\$4.70 per piece
polenta cubes with prosciutto	\$5.20 per piece
maryland blue crab cakes	\$6.25 per piece
chicken or beef satay with dipping sauce	\$5.75 per piece
vegetarian spring rolls	\$5.00 per piece
spanakopita	\$5.20 per piece
assorted dim sum with dipping sauce	\$5.20 per piece
vegetable or pork pot stickers	\$5.20 per piece
assorted stuffed mushrooms	\$5.20 per piece
seared ocean scallops	\$6.25 per piece
crab ragoon	\$5.50 per piece
fito triangle with wild mushroom	\$5.20 per piece
assorted mini deep dish pizzas	\$5.00 per piece

hand passed butler style | \$175 labor fee

2010. Marriott International. All Rights Reserved.

Prices are per person. A customary 23% taxable service charge and sales tax will be added to prices

[home](#) [<](#) [>](#)

SAN FRANCISCO MARRIOTT FISHERMAN'S WHARF

1250 Columbus Avenue | San Francisco | CA 94133

415.775.7555 | www.marriott.com/sfofw

events by Marriott

[breakfast](#) [breaks](#) [lunch](#) [RECEPTION](#) [dinner](#) [package](#) [beverage](#) [healthy](#) [technology](#) [info](#)

[>hors d'oeuvre](#) [> station](#) [> themed](#)

reception selections

cold hors d' oeuvres

(50 piece minimum order)



smoked salmon with cucumber and dill cream cheese	\$5.50 per piece
jumbo wild prawns cocktail	\$6.85 per piece
assorted pin wheel sandwiches	\$5.00 per piece
marinated new zealand green mussels	\$4.70 per piece
fruit skewers with yogurt mint sauce	\$5.20 per piece
chilled alaskan snow crab claws	\$7.05 per piece
dungeness crab bruschetta with crostini	\$6.25 per piece
buffalo mozzarella and tomato skewers	\$5.20 per piece
pacific oysters ½ shell	\$6.25 per piece
bay shrimp canapés with tobiko caviar	\$5.75 per piece
prosciutto, melon and berry	\$6.25 per piece
pear, glazed walnut and blue cream cheese	\$6.05 per piece
curry chicken and red bell pepper in cucumber	\$6.25 per piece

hand passed butler style | \$175 labor fee

SAN FRANCISCO MARRIOTT FISHERMAN'S WHARF

1250 Columbus Avenue | San Francisco | CA 94133
415.775.7555 | www.marriott.com/sfofw

events by Marriott

[breakfast](#) [breaks](#) [lunch](#) [RECEPTION](#) [dinner](#) [package](#) [beverage](#) [healthy](#) [technology](#) [info](#)

[>hors d'oeuvre](#) [> station](#) [> themed](#)

reception selections

display stations | per person
(minimum 25 people)

north beach antipasto | \$15.00

salami, mortadella, prosciutto, cheeses, bay shrimp, grilled vegetables and imported olives

chilled seafood platter | market price

prawns, snow crab claws, new zealand green mussels and pacific oysters served with cocktail sauce

fresh vegetable crudités | \$11.50

array of grilled and raw vegetables served with organic spinach, brie and cream cheese dip

fresh seasonal fruit skewers | \$11.50

fresh seasonal fruit skewered and served with yogurt, honey and lime dipping sauce

marriott cheeseboard display | \$13.80

international, domestic and, artisan cheese served with crackers, baguettes, and fruit garnish



snack selections

chips and dips | \$5.80 per person

cocktail peanuts | \$13.60 per pound

mixed nuts | \$38.85 per pound

pretzels | \$16.80 per pound

SAN FRANCISCO MARRIOTT FISHERMAN'S WHARF

1250 Columbus Avenue | San Francisco | CA 94133

415.775.7555 | www.marriott.com/sfofw

events by Marriott

[breakfast](#) [breaks](#) [lunch](#) [RECEPTION](#) [dinner](#) [package](#) [beverage](#) [healthy](#) [technology](#) [info](#)

[>hors d'oeuvre](#) [> station](#) [> themed](#)

reception selection

specialty action stations / per person

chef attendant fee will apply / (minimum 35 people)

fajita station | \$23.80

lime and cilantro chicken fajitas

smokey chipotle steak fajitas

homemade salsa, guacamole, sour cream and black beans

warm flour tortillas and crispy tortilla chips

oriental stir-fry station | \$23.80

ginger chicken, szechuan shrimp

bell peppers, carrots, water chestnuts and
sugar snap peas

vegetable fried rice

fortune cookies

pasta station | \$22.50

farfalle, cheese tortellini, marsala wild mushrooms, grilled zucchini, peas and
prosciutto

fresh herbs, olive oil, garlic and white wine

italian plum tomato basil sauce and alfredo sauce



SAN FRANCISCO MARRIOTT FISHERMAN'S WHARF

1250 Columbus Avenue | San Francisco | CA 94133

415.775.7555 | www.marriott.com/sfofw

events by Marriott

[breakfast](#)

[breaks](#)

[lunch](#)

[RECEPTION](#)

[dinner](#)

[package](#)

[beverage](#)

[healthy](#)

[technology](#)

[info](#)

Reception displays

[>hors d'oeuvre](#) [> station](#) [> themed](#)

around the world lettuce wrap grill | \$34.65

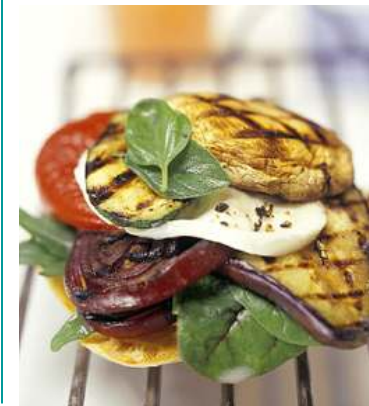
beef and chicken hot off the griddle served with chili sambal, asian vegetables, and napa cabbage wraps
fajita spices, peppers, onions and cheese iceberg "tacos"
moroccan spices and curries, lime and bibb lettuce wraps
peppercorns, mushrooms, and swiss cheese in crisp romaine leaves

cajun creole corner | \$32.40

flame broiled chicken breast with creole sauce
halibut simmered in gumbo broth
cajun brown rice jambalaya with shrimp

san francisco beach party | \$41.70

shrimp, scallop, clam, and mussels cioppino
killer grilled chicken breasts in spicy herb broth
served with steamed basmati rice and crispy french baguettes



SAN FRANCISCO MARRIOTT FISHERMAN'S WHARF

1250 Columbus Avenue | San Francisco | CA 94133
415.775.7555 | www.marriott.com/sfofw

events by Marriott

[breakfast](#) [breaks](#) [lunch](#) [RECEPTION](#) [dinner](#) [package](#) [beverage](#) [healthy](#) [technology](#) [info](#)

[>hors d'oeuvre](#) [> station](#) [> themed](#)



reception

carved specialties

each item served with artisan rolls and appropriate condiments

chef attendant fee will apply

bourbon and clove glazed pit ham | \$389 each

(serves 40 people)

peppercorn roasted filet mignon | market price

(serves 15 people)

cajun spiced roast turkey | \$325 each

(serves 20 people)

roasted top round of beef | market price

(serves 50 people)

SAN FRANCISCO MARRIOTT FISHERMAN'S WHARF

1250 Columbus Avenue | San Francisco | CA 94133
415.775.7555 | www.marriott.com/sfofw

events by Marriott

[breakfast](#) [breaks](#) [lunch](#) [RECEPTION](#) [dinner](#) [package](#) [beverage](#) [healthy](#) [technology](#) [info](#)

[>hors d'oeuvre](#) [> station](#) [> themed](#)

reception selections

dessert station | \$22.00

- assorted french pastries
- petit fours
- mini fruit tarts
- assortment of cakes and pies
- coffee and tea service



SAN FRANCISCO MARRIOTT FISHERMAN'S WHARF

1250 Columbus Avenue | San Francisco | CA 94133

415.775.7555 | www.marriott.com/sfwh

events by Marriott

dinner

[breakfast](#)

[breaks](#)

[lunch](#)

[reception](#)

[DINNER](#)

[package](#)

[beverage](#)

[healthy](#)

[technology](#)

[info](#)



FLAVOR

- salads
- salmon
- poultry
- filet
- lamb
- desserts
- beverages

© 2010. Marriott International. All Rights Reserved.

Prices are per person. A customary 23% taxable service charge and sales tax will be added to prices

[home](#) < >

SAN FRANCISCO MARRIOTT FISHERMAN'S WHARF

1250 Columbus Avenue | San Francisco | CA 94133
415.775.7555 | www.marriott.com/sfwh

events by Marriott

[breakfast](#) [breaks](#) [lunch](#) [reception](#) **DINNER** [package](#) [beverage](#) [healthy](#) [technology](#) [info](#)

[> plated](#) [> buffet](#) [> a la carte](#)



dinner plated

all entrees to include

choice of one starter and dessert

fresh baked bread service

coffee and tea service

starters | choose one

san francisco seafood chowder

tomato basil with spinach chiffonade

pear salad

pear, baby organic greens, arugula, point Reyes blue cheese,
candied pistachios and zinfandel vinaigrette

tomato and mozzarella salad with crostini

desserts | choose one

san francisco cable car dome

assorted petit fours

classic french opera cake

mojito mousse cake

raspberry charlotte

crème brulee cheesecake

caramel mystic - chocolate cake with
caramel and banana mousse

SAN FRANCISCO MARRIOTT FISHERMAN'S WHARF

1250 Columbus Avenue | San Francisco | CA 94133
415.775.7555 | www.marriott.com/sfwh

events by Marriott

[breakfast](#) [breaks](#) [lunch](#) [reception](#) [DINNER](#) [package](#) [beverage](#) [healthy](#) [technology](#) [info](#)

[> plated](#) [> buffet](#) [> a la carte](#)



starters continued

asparagus salad

asparagus, california oranges, belgian endive, red onion, fresh basil and tarragon

bibb lettuce salad with goat cheese and pistachios

vine ripened tomatoes, boston lettuce leaves, goat cheese, roasted pistachios and a light mustard vinaigrette

napa valley field of greens

belgium endive and mesclun greens with walnuts and crumbled roquefort cheese in a balsamic vinaigrette

sonoma coast market salad

romaine, point reyes local blue cheese, california cucumbers, heirloom tomatoes, roasted peppers, country olives, fresh basil, and lemon chardonnay vinaigrette

north beach caesar salad

romaine, sourdough croutons, parmesan cheese, sundried tomato, caesar dressing

2010. Marriott International. All Rights Reserved.

Prices are per person. A customary 23% taxable service charge and sales tax will be added to prices

[home](#) [<](#) [>](#)

SAN FRANCISCO MARRIOTT FISHERMAN'S WHARF

1250 Columbus Avenue | San Francisco | CA 94133

415.775.7555 | www.marriott.com/sfwh

events by Marriott

breakfast

breaks

lunch

reception

DINNER

package

beverage

healthy

technology

info

> plated > buffet > a la carte



dinner entrée's

grilled chicken with lemon, garlic and oregano | \$63.70

marinated and grilled boneless breast of chicken, served with mediterranean brown rice and green beans

chicken en croute | \$64.70

stuffed with mushroom duexelle, wrapped in puff pastry with cabernet sauce, fresh seasonal vegetables

california white sea bass | \$68.30

roasted with olives and basil
new potatoes crushed with garlic, chilies and arugula
tomato vinaigrette

seared dover sole with tomato fumet & kalamate olives | \$63.70

served over roasted fingerling potatoes and broccoli rabe

grilled salmon | \$65.90

grilled salmon with sun dried tomatoes and shiitake mushrooms
served over polenta with a white wine demi-glaze reduction

stuffed lobster tails | \$79.75

baby lobster tails stuffed with dungeness crab, wild prawns
and fresh organic spinach
saffron rice and fresh seasonal vegetables

SAN FRANCISCO MARRIOTT FISHERMAN'S WHARF

1250 Columbus Avenue | San Francisco | CA 94133
415.775.7555 | www.marriott.com/sfwh

events by Marriott

[breakfast](#) [breaks](#) [lunch](#) [reception](#) [DINNER](#) [package](#) [beverage](#) [healthy](#) [technology](#) [info](#)

[> plated](#) [> buffet](#) [> a la carte](#)

dinner entrée's

boneless short rib | \$65.90

braised in beer and red wine on sautéed spinach and polenta cake

roasted rack of lamb chops | \$68.30

tarragon herb crust, white cheddar potatoes
fresh seasonal vegetables

porcini crusted new york steak | \$79.40

mascarpone and arugula whipped potatoes
focaccia crusted broiled tomato with fresh herbs

aged filet mignon (prepared medium) | \$81.00

merlot wine reduction, roasted garlic mashed potatoes
grilled vegetables



classic combinations | \$76.40

choice of any two

beef filet medallion,
crab stuffed shrimp
signature crab cakes
seared salmon

served with chef's choice of potatoes, asparagus
and baby carrots

2010. Marriott International. All Rights Reserved.

Prices are per person. A customary 23% taxable service charge and sales tax will be added to prices

[home](#) [<](#) [>](#)

SAN FRANCISCO MARRIOTT FISHERMAN'S WHARF

1250 Columbus Avenue | San Francisco | CA 94133
415.775.7555 | www.marriott.com/sfwh

events by Marriott

[breakfast](#) [breaks](#) [lunch](#) [reception](#) [DINNER](#) [package](#) [beverage](#) [healthy](#) [technology](#) [info](#)

[> plated](#) [> buffet](#) [> a la carte](#)

the marriott fisherman's wharf showcase buffet | \$81.00

salads | choose two

napa valley field of greens

belgium endive and mesclun greens with walnuts and crumbled roquefort cheese in a balsamic vinaigrette

wine country waldorf salad

pears, grapes, celery, fresh corn, mango and jicama with toasted walnuts and dried cranberries

north beach caesar salad

romaine, sourdough croutons, parmesan cheese, sundried tomato, caesar dressing

cold display selection | choose two

california artisan cheese board with biscuit crackers

lemon grass ginger marinated new zealand green mussels

grilled seasonal vegetables crudité with lime humus dip

chilled peel and eat prawns cocktail sauce

accompaniments | choose one

oven roasted fingerling potatoes

mediterranean brown rice

chantilly whipped parmesan mashed potatoes

entrees | choose two

chicken franchise, glazed wild salmon, farfalle with wild mix mushroom, seared dover sole with tomato fumet

tuscan grilled pork chop or charred flat iron steak with cabernet demi glaze

dessert table

chef's selection of gourmet cakes and pastries

freshly brewed coffees and tazo teas

add chef's carving table \$12 | choose one

bourbon and clove roasted pit ham, cajun spice roasted tom turkey, pepper crusted roasted n.y. sirloin

chef fee \$175

2010. Marriott International. All Rights Reserved.

Prices are per person. A customary 23% taxable service charge and sales tax will be added to prices

[home](#) [<](#) [>](#)

SAN FRANCISCO MARRIOTT FISHERMAN'S WHARF

1250 Columbus Avenue | San Francisco | CA 94133
415.775.7555 | www.marriott.com/sfwh

events by Marriott

[breakfast](#) [breaks](#) [lunch](#) [reception](#) [DINNER](#) [package](#) [beverage](#) [healthy](#) [technology](#) [info](#)

[> plated](#) [> buffet](#) [> a la carte](#)

dinner buffets

fisherman's wharf buffet | \$89.10

organic mixed greens, roma tomatoes, cucumber, red grapes, roasted pecans and cabernet vinaigrette
iced seafood display of prawns, snow crab claws, pacific oysters, and marinated mussels
san francisco seafood chowder
spiced crusted sea bass on cannelloni bean ragout
fried gulf shrimp and calamari
saffron rice and assorted seasonal garden vegetables
artisan and sour dough rolls
array of assorted pastries and gourmet cakes
freshly brewed coffees and tazo teas



chinatown | \$67.15

oriental chicken and mandarin orange salad, chinese cole slaw
assorted dim sum sampler served in bamboo steamer with plum, hoisin, ginger and garlic sauces
prawn skewers, sweet & sour chicken, shrimp fried rice
fortune cookies, fresh fruit tarts
freshly brewed coffees, hot green tea & iced tea

add stir fry station | \$15.70

Includes shrimp, chicken, bok choy, bell peppers, carrots, water chestnuts, and snow peas

chef fee \$175

2010. Marriott International. All Rights Reserved.

Prices are per person. A customary 23% taxable service charge and sales tax will be added to prices

[home](#) [<](#) [>](#)

SAN FRANCISCO MARRIOTT FISHERMAN'S WHARF

1250 Columbus Avenue | San Francisco | CA 94133
415.775.7555 | www.marriott.com/sfwh

events by Marriott

[breakfast](#) [breaks](#) [lunch](#) [reception](#) [DINNER](#) [package](#) [beverage](#) [healthy](#) [technology](#) [info](#)

dinner buffets [> plated](#) [> buffet](#) [> a la carte](#)



north beach buffet | \$65.90

- choice of minestrone or tomato florentine soup
- caesar salad with crostini tapenade
- antipasto platter with italian meats, imported cheese and olives
- chicken saltimbocca
- braised pork chop osso buco style
- wild mushroom risotto , fresh grilled seasonal vegetables
- basket of herb ciabatta and rosemary focaccia breads
- assorted italian desserts
- freshly brewed coffees, hot tazo and iced tea

add pasta station | \$15.70

- farfalle and cheese tortellini, italian plum tomato and basil pesto sauces

chef fee \$175

SAN FRANCISCO MARRIOTT FISHERMAN'S WHARF

1250 Columbus Avenue | San Francisco | CA 94133
415.775.7555 | www.marriott.com/sfwh

events by Marriott

[breakfast](#) [breaks](#) [lunch](#) [reception](#) [DINNER](#) [package](#) [beverage](#) [healthy](#) [technology](#) [info](#)

dinner buffets

[> plated](#) [> buffet](#) [> a la carte](#)

carb conscious | \$83.30

gourmet domestic and imported cheese board, tomatoes, cucumbers, and roquefort salad, caesar and cajun shrimp salad, antipasto platter

grilled chicken breast, country ham and saga blue cheese, round of beef with horseradish and au jus carved by a uniformed chef, grilled mahi mahi with yellow pepper coulis and roasted tomatoes

mushroom stuffed tomatoes, creamed belgium endive and celeriac, cauliflower au gratin, chef's signature low carb dessert display

chef carving fee \$125

low cholesterol | \$84

sliced fresh seasonal fruits and berries, mixed baby field greens with assorted dressings

grilled vegetable platter with balsamic vinegar and pesto oil, spinach and pink shrimp salad with ruby grapefruit and scallion yogurt dressing

broiled lemon pepper crusted chicken breast, grilled halibut with rock shrimp creole sauce

roasted red bliss potatoes, wild and brown rice pilaf, pasta al pomodoro, steamed fresh asparagus, and baby carrots

fresh fruit and berry tarts, low fat cheesecake and berry coulis

served with freshly brewed coffee, specialty teas or red bull and other low carb beverages



SAN FRANCISCO MARRIOTT FISHERMAN'S WHARF

1250 Columbus Avenue | San Francisco | CA 94133
415.775.7555 | www.marriott.com/sfwh

events by Marriott

[breakfast](#) [breaks](#) [lunch](#) [reception](#) [DINNER](#) [package](#) [beverage](#) [healthy](#) [technology](#) [info](#)

[> plated](#) [> buffet](#) [> a la carte](#)

dinner buffet

low fat | \$80.85

sliced fresh seasonal fruits and berries, mixed baby field greens with fat-free raspberry dressing

grilled vegetable platter with balsamic vinegar and pesto oil, italian vegetable pasta salad

chicken breast and red onion marmalade, baked salmon, new orleans gumbo

lemon boiled red potatoes, wild rice pilaf, steamed fresh vegetables and herb medley

low fat cheesecake and berry coulis



dinner plated

porcini crusted steak | \$65.10

carb conscious

12 oz n.y. strip steak

bleu cheese spinach gratin

charred onion arugula salad

chicken tarragon | \$54.60

carb conscious

seared chicken with tarragon béarnaise

grilled beefsteak tomatoes

roasted vegetables

served with freshly brewed coffee, specialty teas or red bull and other low carb beverages

2010. Marriott International. All Rights Reserved.

Prices are per person. A customary 23% taxable service charge and sales tax will be added to prices

[home](#) [<](#) [>](#)

SAN FRANCISCO MARRIOTT FISHERMAN'S WHARF

1250 Columbus Avenue | San Francisco | CA 94133

415.775.7555 | www.marriott.com/sfwh

events by Marriott

by Marriott

meeting package

breakfast

breaks

lunch

reception

dinner

PACKAGE

beverage

healthy

technology

INFO



PLAN

upon arrival
mid morning refresh
lunch buffet
afternoon break

SAN FRANCISCO MARRIOTT FISHERMAN'S WHARF

1250 Columbus Avenue | San Francisco | CA 94133
415.775.7555 | www.marriott.com/sfwh

events by Marriott

breakfast breaks lunch reception dinner PACKAGE beverage healthy technology INFO

meeting package



napa package | \$67

upon arrival

fresh orange, grapefruit and cranberry juice
sliced fresh seasonal fruits and berries
yogurts with granola
fresh baked morning pastries
bagels with cream cheese, butter, fruit preserves
freshly brewed coffee and tea service

mid morning refresh

freshly brewed coffee and tea
assorted soft drinks and bottled water

afternoon break

assorted cookies and brownies
assorted soft drinks and bottled water
freshly brewed coffee and tea

sonoma package | \$81

upon arrival

fresh orange, grapefruit and cranberry juice
sliced fresh seasonal fruits and berries
yogurts with granola
fresh baked morning pastries
bagels with cream cheese, butter, fruit preserves
freshly brewed coffee and tea service

mid morning refresh | select one

escape to alcatraz

assorted fresh baked cookies and brownies
chocolate milk, coffee and teas service, assorted soft drinks

bay to breakers

fresh fruit kebobs with honey-yogurt dipping sauce
fruit flavored yogurts, smoothies and granola bars
sparkling water and bottled water

afternoon break

peanuts, popcorn and cracker jacks
assorted candy bars and warm soft pretzels with mustard
assorted soft drinks and bottled water

2010. Marriott International. All Rights Reserved.

Prices are per person. A customary 23% taxable service charge and sales tax will be added to prices

[home](#) < >

SAN FRANCISCO MARRIOTT FISHERMAN'S WHARF

1250 Columbus Avenue | San Francisco | CA 94133

415.775.7555 | www.marriott.com/sfwh

events by Marriott

breakfast

breaks

lunch

reception

dinner

PACKAGE

beverage

healthy

technology

INFO

north beach package | \$127

upon arrival

fresh orange, grapefruit and cranberry juice
sliced fresh seasonal fruits and berries
yogurts with granola
fresh baked morning pastries
bagels with cream cheese, butter, fruit preserves
freshly brewed coffee and tea service

mid morning refresh | select one

the world series

peanuts, popcorn and cracker jacks
assorted candy bars and warm soft pretzels with mustard
assorted soft drinks and bottled water

bay to breakers

fresh fruit kebobs with honey-yogurt dipping sauce
fruit flavored yogurts, smoothies and granola bars
sparkling water and bottled water



meeting package

lunch buffet | select one

working lunch sandwich board

soup du jour
sliced turkey, salami, black forest ham, roasted beef
imported and domestic cheeses
bay shrimp ceviche, red potato salad, specialty chips
lettuce, tomato, pickles and red onions
focaccia, french baguette and slice sourdough breads
fresh fruit tarts
coffee, tea and ice tea service

san francisco north beach

minestrone or tomato florentine soup
caesar salad, vine ripened tomato and fresh buffalo mozzarella with port wine vinaigrette
italian meats, coppa, prosciutto, salami, imported cheeses and olives
chicken saltimbocca and baked vegetarian cannelloni
wild mushroom risotto, grilled fresh vegetables
assorted italian desserts
coffee, tea and ice tea service

afternoon break

assorted fresh baked cookies and brownies
chocolate milk, coffee and teas service, assorted soft drinks

SAN FRANCISCO MARRIOTT FISHERMAN'S WHARF

1250 Columbus Avenue | San Francisco | CA 94133

415.775.7555 | www.marriott.com/sfwh

events by Marriott

breakfast

breaks

lunch

reception

dinner

PACKAGE

beverage

healthy

technology

INFO

meeting package

platinum package | \$134

upon arrival

fresh orange, grapefruit, and cranberry juice
fresh baked morning pastries
bagels with condiments
hot and cold cereals
sliced fresh fruit
scrambled eggs, breakfast potatoes
crisp bacon and chicken sausage
coffee and tea service

mid morning refresh | select one

bay to breakers

fresh fruit kebobs with honey-yogurt dipping sauce
fruit flavored yogurts, smoothies and granola bars
sparkling water and bottled water

escape to alcatraz

assorted fresh baked cookies and brownies
chocolate milk, coffee and teas service, assorted
soft drinks

lunch buffet

new england clam chowder or wild mushroom bisque
fresh asparagus and shaved fennel salad with pecorino and
lemon basil vinaigrette
seared salmon with wild mushroom and white wine demi-glaze
grilled breast of chicken with lemon, garlic and fresh oregano
oven roasted yukon gold potatoes
grilled seasonal vegetables
assorted petit fours and crème brulee cheesecake
coffee, tea and ice tea service

afternoon break | select one

sonoma splash

local artisan cheese platter to include humboldt fog cheese,
point reyes blue and mezzo secco dry jack cheese, fresh
seasonal fruit, garnished with country olive medley and mixed
nuts
sonoma sparkling cider, assorted soft drinks and mineral water

the world series

peanuts, popcorn and cracker jacks
assorted candy bars and warm soft pretzels with mustard
assorted soft drinks and bottled water

SAN FRANCISCO MARRIOTT FISHERMAN'S WHARF

1250 Columbus Avenue | San Francisco | CA 94133
415.775.7555 | www.marriott.com/sfofw

events by Marriott

beverage

[breakfast](#)

[breaks](#)

[lunch](#)

[reception](#)

[dinner](#)

[package](#)

BEVERAGE

[healthy](#)

[technology](#)

[info](#)



ENJOY

- martinis
- champagne
- cordials
- margarita
- red wine
- white wine
- tonics
- beer
- non-alcoholic

© 2010 Marriott International. All Rights Reserved.

Prices are per person. A customary 23% taxable service charge and sales tax will be added to prices

[home](#) < >

SAN FRANCISCO MARRIOTT FISHERMAN'S WHARF

1250 Columbus Avenue | San Francisco | CA 94133

415.775.7555 | www.marriott.com/sfofw

events by Marriott

[breakfast](#)[breaks](#)[lunch](#)[reception](#)[dinner](#)[package](#)[BEVERAGE](#)[healthy](#)[technology](#)[info](#)[> bars](#) [> wines](#)

cocktails

host bar

premium cocktails	\$10.5 per drink
cordials	\$11 per drink
call cocktails	\$10 per drink
domestic beer	\$6 per bottle
imported beer	\$6.5 per bottle
house wine	\$8.5 per glass
soft drinks and juices	\$5 per drink
mineral water	\$5 per drink

beverages are served on a per drink basis and are subject to service charge and applicable sales tax

bartender fee | \$200

for the first three hours

bartender fee | \$75

for each additional hour

bartender required for all service of alcoholic beverages

SAN FRANCISCO MARRIOTT FISHERMAN'S WHARF

1250 Columbus Avenue | San Francisco | CA 94133

415.775.7555 | www.marriott.com/sfofw

events by Marriott

[breakfast](#)[breaks](#)[lunch](#)[reception](#)[dinner](#)[package](#)[BEVERAGE](#)[healthy](#)[technology](#)[info](#)[> bars](#) [> wines](#)

cocktails

cash bar

premium cocktails	\$11	per drink
cordials	\$11.5	per drink
call cocktails	\$10	per drink
house wine	\$9	per glass
domestic beer	\$6.5	per bottle
imported beer	\$7	per bottle
soft drinks and juices	\$5	per drink
mineral water	\$5	per drink

beverages are served on a cash basis and are inclusive of the applicable sales tax

bartender fee | \$200

for the first three hours

bartender fee | \$75

for each additional hour

bartender required for all service of alcoholic beverages

SAN FRANCISCO MARRIOTT FISHERMAN'S WHARF

1250 Columbus Avenue | San Francisco | CA 94133
415.775.7555 | www.marriott.com/sfofw

events by Marriott

[breakfast](#) [breaks](#) [lunch](#) [reception](#) [dinner](#) [package](#) [BEVERAGE](#) [healthy](#) [technology](#) [info](#)

[> bars](#) [> wines](#)

bar packages



[call brands](#) | \$23 first hour
\$19 each additional hour

[premium brands](#) | \$27 first hour
\$20 each additional hour

champagne, punch and mimosa | \$90 per gallon
fruit punch | \$60 per gallon

[bartender fee](#) | \$200
for the first three hours
[bartender fee](#) | \$75
for each additional hour
bartender required for all service of alcoholic beverages

© 2010 Marriott International. All Rights Reserved.

Prices are per person. A customary 23% taxable service charge and sales tax will be added to prices

[home](#) [<](#) [>](#)

SAN FRANCISCO MARRIOTT FISHERMAN'S WHARF

1250 Columbus Avenue | San Francisco | CA 94133

415.775.7555 | www.marriott.com/sfwh

events by Marriott

healthy

[breakfast](#)

[breaks](#)

[lunch](#)

[reception](#)

[dinner](#)

[package](#)

[beverage](#)

[HEALTHY](#)

[technology](#)

[info](#)



SMART

- granola
- yogurt
- nuts
- salad
- fruit
- salmon
- vegetables
- pita

© 2010 Marriott International. All Rights Reserved.

Prices are per person. A customary 23% taxable service charge and sales tax will be added to prices

[home](#) < >

SAN FRANCISCO MARRIOTT FISHERMAN'S WHARF

1250 Columbus Avenue | San Francisco | CA 94133
415.775.7555 | www.marriott.com/sfo

events by Marriott

[breakfast](#) [breaks](#) [lunch](#) [reception](#) [dinner](#) [package](#) [beverage](#) [HEALTHY](#) [technology](#) [info](#)

breakfast plated

egg white vegetable frittata | \$35.90

pan baked with tomato basil relish, spinach, shiitake and portobello mushrooms, sautéed fennel and shallots
served with assorted breakfast breads,



crunchy french toast | \$35.90

whole wheat bread dipped in eggbeaters and corn flakes

grilled and topped with fresh strawberries and bananas

served with light country maple syrup

breakfast served with assorted juices and coffee, selection of red bull and low carb beverages available

grilled chicken benedict | \$37.00

flame broiled chicken breast topped with poached eggs and hollandaise sauce

served with thick cut beefsteak tomatoes

2010. Marriott International. All Rights Reserved.

Prices are per person. A customary 23% taxable service charge and sales tax will be added to prices

[home](#) [<](#) [>](#)

SAN FRANCISCO MARRIOTT FISHERMAN'S WHARF

1250 Columbus Avenue | San Francisco | CA 94133
415.775.7555 | www.marriott.com/sfbay

events by Marriott

breakfast breaks lunch reception dinner package beverage HEALTHY technology info

breakfast buffets

low fat | \$40.50

- sliced fresh seasonal fruits and berries
- assorted dry cereals with non-fat milk
- low-fat waffle with country maple syrup
- roasted pepper vegetable egg white frittata
- low fat cottage cheese and assorted sliced breads

low cholesterol | \$40.50

- sliced seasonal fruits and berries
- assorted dry cereals with non-fat milk
- hot oatmeal and crunchy french toast
- scrambled egg beaters
- honey and bran muffins, toasted english muffins and bagels

carb conscious | \$43.05

- fresh roma tomatoes and mozzarella platter
- sliced deli meats and cheeses
- applewood bacon and chicken sausage
- scrambled eggs with cheddar cheese
- grilled roasted vegetables
- buffets served with assorted juices



2010. Marriott International. All Rights Reserved.

Prices are per person. A customary 23% taxable service charge and sales tax will be added to prices

SAN FRANCISCO MARRIOTT FISHERMAN'S WHARF

1250 Columbus Avenue | San Francisco | CA 94133
415.775.7555 | www.marriott.com/sfwh

events by Marriott

[breakfast](#) [breaks](#) [lunch](#) [reception](#) [dinner](#) [package](#) [beverage](#) [HEALTHY](#) [technology](#) [info](#)

lunch entrees

grilled shrimp nicoise salad | \$43.05

warm grilled jumbo shrimp served on a bed of french beans
red and yellow tomatoes
butter lettuce and chopped egg tossed in dijon vinaigrette

miso glazed salmon | \$46.30

served on a bed of mixed tender greens
jasmine rice tossed with fresh tomatoes, cucumbers and carrots in lemongrass and rice wine broth
Includes red bull and low carb beverages

box lunches

dagwood wrap | \$43.05

salami, turkey, ham, provolone and mozzarella cheeses with tomato and peperoncinis wrapped in a soft tortilla
served with assorted cheeses and fresh crudités with onion cheese dip and cliff bar
assorted soft drinks

telegraph hill | \$43.05

grilled vegetables, roast turkey with tomatoes and balsamic vinegar wrapped in soft lavosh
served with green salad with fat-free raspberry dressing
fresh fruit salad and cookies
assorted soft drinks



2010. Marriott International. All Rights Reserved.

Prices are per person. A customary 23% taxable service charge and sales tax will be added to prices

SAN FRANCISCO MARRIOTT FISHERMAN'S WHARF

1250 Columbus Avenue | San Francisco | CA 94133
415.775.7555 | www.marriott.com/sfwh

events by Marriott

[breakfast](#)

[breaks](#)

[lunch](#)

[reception](#)

[dinner](#)

[package](#)

[beverage](#)

[HEALTHY](#)

[technology](#)

[info](#)



carb conscious | \$53.55

imported and domestic cheese, tuna nicoise salad
chicken fajita lettuce wraps
roast sirloin of beef with wild mushrooms
baked eggplant ratatouille and blue lake green beans

lunch buffets

low cholesterol | \$53.55

sliced fresh seasonal fruits and berries, mixed field greens with lemon vinaigrette
spinach salad with orange and cumin yogurt dressing
sage grilled chicken breast with roma tomatoes and fresh basil
halibut provencal with sundried tomatoes and artichokes
brown rice and steamed fresh vegetables

low fat | \$53.55

sliced fresh seasonal fruits and berries
baby mixed greens with raspberry vinaigrette
tabbouleh salad and hummus with pita bread
baked salmon with tomato-mint relish
roasted potatoes, wild rice medley and freshly steamed vegetables

lunches served with red bull and low carb beverages

SAN FRANCISCO MARRIOTT FISHERMAN'S WHARF

1250 Columbus Avenue | San Francisco | CA 94133
415.775.7555 | www.marriott.com/sfwh

events by Marriott

[breakfast](#) [breaks](#) [lunch](#) [reception](#) [dinner](#) [package](#) [beverage](#) [HEALTHY](#) [technology](#) [info](#)

dinner buffets

carb conscious | \$83.30

gourmet domestic and imported cheese board, tomatoes, cucumbers, and roquefort salad, caesar and cajun shrimp salad, antipasto platter

grilled chicken breast, country ham and saga blue cheese, round of beef with horseradish and au jus carved by a uniformed chef, grilled mahi mahi with yellow pepper coulis and roasted tomatoes

mushroom stuffed tomatoes, creamed belgium endive and celeriac, cauliflower au gratin, chef's signature low carb dessert display

chef carving fee \$125

low cholesterol | \$84

sliced fresh seasonal fruits and berries, mixed baby field greens with assorted dressings

grilled vegetable platter with balsamic vinegar and pesto oil, spinach and pink shrimp salad with ruby grapefruit and scallion yogurt dressing

broiled lemon pepper crusted chicken breast, grilled halibut with rock shrimp creole sauce

roasted red bliss potatoes, wild and brown rice pilaf, pasta al pomodoro, steamed fresh asparagus, and baby carrots

fresh fruit and berry tarts, low fat cheesecake and berry coulis

served with freshly brewed coffee, specialty teas or red bull and other low carb beverages



SAN FRANCISCO MARRIOTT FISHERMAN'S WHARF

1250 Columbus Avenue | San Francisco | CA 94133
415.775.7555 | www.marriott.com/sfwh

events by Marriott

[breakfast](#) [breaks](#) [lunch](#) [reception](#) [dinner](#) [package](#) [beverage](#) [HEALTHY](#) [technology](#) [info](#)

dinner buffet

low fat | \$80.85

sliced fresh seasonal fruits and berries, mixed baby field greens with fat-free raspberry dressing

grilled vegetable platter with balsamic vinegar and pesto oil, italian vegetable pasta salad

chicken breast and red onion marmalade, baked salmon, new orleans gumbo

lemon boiled red potatoes, wild rice pilaf, steamed fresh vegetables and herb medley

low fat cheesecake and berry coulis



dinner plated

porcini crusted steak | \$65.10

carb conscious

12 oz n.y. strip steak

bleu cheese spinach gratin

charred onion arugula salad

chicken tarragon | \$54.60

carb conscious

seared chicken with tarragon béarnaise

grilled beefsteak tomatoes

roasted vegetables

served with freshly brewed coffee, specialty teas or red bull and other low carb beverages

SAN FRANCISCO MARRIOTT FISHERMAN'S WHARF

1250 Columbus Avenue | San Francisco | CA 94133
415.775.7555 | www.marriott.com/sfwh

events by Marriott

[breakfast](#) [breaks](#) [lunch](#) [reception](#) [dinner](#) [package](#) [beverage](#) [HEALTHY](#) [technology](#) [info](#)

Reception displays

around the world lettuce wrap grill | \$34.65

beef and chicken hot off the griddle served with chili sambal, asian vegetables, and napa cabbage wraps
fajita spices, peppers, onions and cheese iceberg "tacos"
moroccan spices and curries, lime and bibb lettuce wraps
peppercorns, mushrooms, and swiss cheese in crisp romaine leaves

cajun creole corner | \$32.40

flame broiled chicken breast with creole sauce
halibut simmered in gumbo broth
cajun brown rice jambalaya with shrimp

san francisco beach party | \$41.70

shrimp, scallop, clam, and mussels cioppino
killer grilled chicken breasts in spicy herb broth
served with steamed basmati rice and crispy french baguettes



SAN FRANCISCO MARRIOTT FISHERMAN'S WHARF

1250 Columbus Avenue | San Francisco | CA 94133

415.775.7555 | www.marriott.com/sfofw

events by Marriott

technology

breakfast

breaks

lunch

reception

dinner

package

beverage

healthy

TECHNOLOGY

info



FLAWLESS

lights
camera
action

2010. Marriott International. All Rights Reserved.

Prices are per person. A customary 23% taxable service charge and sales tax will be added to prices

home < >

SAN FRANCISCO MARRIOTT FISHERMAN'S WHARF

1250 Columbus Avenue | San Francisco | CA 94133
415.775.7555 | www.marriott.com/sfofw

events by Marriott

[breakfast](#) [breaks](#) [lunch](#) [reception](#) [dinner](#) [package](#) [beverage](#) [healthy](#) [TECHNOLOGY](#) [info](#)



packages

lcd package \$575

projector with screen and power access

plasma package \$425

50" plasma screen with high speed internet access and one computer connection

video package \$275

tv monitor with vcr or dvd player

screen package \$195

screen with power access, extension cord and power strip

overhead package \$250

screen with overhead projector and power access

slide projector 35mm package \$250

screen with slide projector and power access

© 2010 Marriott International. All Rights Reserved.

Prices are per person. A customary 23% taxable service charge and sales tax will be added to prices

[home](#) < >

SAN FRANCISCO MARRIOTT FISHERMAN'S WHARF

1250 Columbus Avenue | San Francisco | CA 94133

415.775.7555 | www.marriott.com/sfofw

events by Marriott

breakfast

breaks

lunch

reception

dinner

package

beverage

healthy

TECHNOLOGY

info



communications

direct dial phone line \$100

speaker phone with direct dial line \$150

(all telephone services will be assessed local and long distance charges.)

wired / wireless high speed* \$175

additional wired connectivity* \$ 50

*high speed lines are charged by number of users / connections

audio / video equipment

cassette recorder \$50

compact disc player \$50

vhs recordable tape \$15

cassette recordable tape \$10

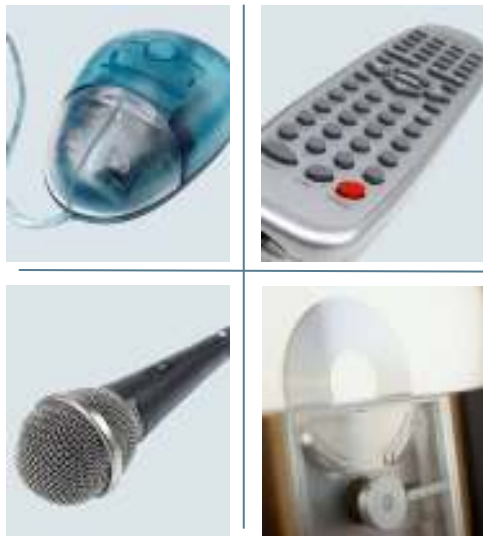
SAN FRANCISCO MARRIOTT FISHERMAN'S WHARF

1250 Columbus Avenue | San Francisco | CA 94133

415.775.7555 | www.marriott.com/sfofw

events by Marriott

breakfast breaks lunch reception dinner package beverage healthy TECHNOLOGY info



meeting accessories

flipchart with markers and pad	\$75
post-it flipchart pad	\$25
whiteboard and markers	\$40
easel sign	\$15
wireless mouse	\$55
laser pointer	\$55
extension cord	\$20
power strip	\$20
vga cable	\$75
podium with light	\$30

microphones

wireless hand-held	\$195
wireless lavalier	\$195
wired podium	\$ 75
wired hand-held	\$ 75
wired lavalier	\$ 75
4-channel mixer	\$ 75
patch to house sound	\$200
(includes av support for setup)	

2010. Marriott International. All Rights Reserved.

Prices are per person. A customary 23% taxable service charge and sales tax will be added to prices

SAN FRANCISCO MARRIOTT FISHERMAN'S WHARF

1250 Columbus Avenue | San Francisco | CA 94133

415.775.7555 | www.marriott.com/sfofw

events by Marriott

by Marriott

info

[breakfast](#)

[breaks](#)

[lunch](#)

[reception](#)

[dinner](#)

[package](#)

[beverage](#)

[healthy](#)

[technology](#)

[INFO](#)



© 2010 Marriott International. All Rights Reserved.

Prices are per person. A customary 23% taxable service charge and sales tax will be added to prices

[home](#) < >

SAN FRANCISCO MARRIOTT FISHERMAN'S WHARF

1250 Columbus Avenue | San Francisco | CA 94133

415.775.7555 | www.marriott.com/sfofw

events by Marriott

[breakfast](#)

[breaks](#)

[lunch](#)

[reception](#)

[dinner](#)

[package](#)

[beverage](#)

[healthy](#)

[technology](#)

[INFO](#)

Food and Beverage

The enclosed menus are only general suggestions as to the selection and variety of entrees and compliments available to you. We take pride in developing new ideas and themes or simply expressing your taste in a specially tailored menu. Please allow us to assist you in theme, decoration and music to enhance your event. No food or beverage (alcoholic or otherwise) to be consumed in the public areas is to be brought into the Hotel by a patron or attendees from outside sources. All food and beverage prices are subject to change. Food and beverage prices will be confirmed 90 days in advance of your function.

Service Charge

All food, beverage, audio-visual and room rental charges are subject to service charge plus applicable sales tax. California law states that service charge is subject to sales tax.

Request for Multiple Entrees

If multiple entrees are requested, a \$2.00 surcharge per person will apply. Some form of entrée indication is required at the guest table (i.e. colored ticket, coded name tag, etc.). This will enable better service by our staff during meal service. We will make every effort to accommodate with special religious and dietary needs.

Guarantee

To ensure adequate food and beverage preparation, the number of guests attending must be submitted no later than three business days (Monday – Friday) prior to the event. This number will be considered your guarantee and not subject to reduction. If no guarantee is received, the Hotel will use the expected number contracted as the guarantee, whichever is greater. There is an 80% guaranteed minimum on all catered events.

Beverage Charges

All catered bars are subject to a \$200.00 labor fee, per bartender, per three hour shift. Bartender charges after that time are \$75.00 per hour. The Marriott Fisherman's Wharf, as a licensee, is responsible for the administration of the sale and service of alcoholic beverages in accordance with California law. No food and beverage may be taken off premises. If alcoholic beverages are to be served on the hotel premises (or elsewhere under the hotel's beverage license), the hotel will require that beverages be provided and dispensed only by the hotel servers and bartenders. The hotel's alcoholic beverage license requires the hotel to (1) request proper identification (photo ID) of any person of questionable age and refuse alcoholic beverage service if the person is either under age or proper identification cannot be produced and (2) refuse service to any person who appears intoxicated.

SAN FRANCISCO MARRIOTT FISHERMAN'S WHARF

1250 Columbus Avenue | San Francisco | CA 94133

415.775.7555 | www.marriott.com/sfofw

events by Marriott

[breakfast](#)

[breaks](#)

[lunch](#)

[reception](#)

[dinner](#)

[package](#)

[beverage](#)

[healthy](#)

[technology](#)

[INFO](#)

Room and Set-Up Charges

Function rooms are assigned to the number of anticipated attendees. With notification, we reserve the right to change function rooms, should attendance change. A \$200.00 set-up fee will be charged if room set-up is changed on the day of the event, at the client's request.

Decorations and Displays

Flowers, candles and green plants provide a lovely atmosphere to make your special function an outstanding event. Your Catering Representative would be happy to assist with any special arrangements. The Hotel does not allow materials to be attached with nails, staples, carpet tape or other substances. Please consult your Catering Representative for assistance in displaying materials in advance of your event.

Shipping and Receiving

Small packages may be delivered to the hotel no more than three business days prior to the event due to limited storage. Items should be addressed to the meeting contact in care of the hotel representative. Packages must be marked "HOLD FOR ARRIVAL" and list the dates of the program clearly on all labels. The client is totally responsible for the arrangement and expense of shipping these items to and from the hotel. The Catering Office must be notified in advance to ensure proper acceptance of these items. A \$5.00 per box fee may apply.

Parking

Limited valet parking service is available and subject to charge. The Hotel is not responsible for loss or damage to automobiles or their contents while parked on Hotel property.

Audio-Visual and Engineering

The Hotel offers a wide variety of Audio-Visual equipment and services on a rental basis. There is a 24 hour cancellation requirement on any Audio-Visual orders or full payment is due. Orders may be placed through the Catering Office. Restrictions and/or charges will apply for any Audio-Visual equipment not supplied by the Hotel. Special engineering requirements must be specified to our Catering Office at least three weeks prior to event. Charges will be based on labor involved and power usage.

Security

If in the sole judgment of the Hotel, security is required to maintain order due to the size and nature of your event, the Hotel may require you to provide, at your expense, bonded security personnel, especially when valuable exhibits/merchandise is displayed.

SAN FRANCISCO MARRIOTT FISHERMAN'S WHARF

1250 Columbus Avenue | San Francisco | CA 94133

415.775.7555 | www.marriott.com/sfofw

events by Marriott

[breakfast](#)

[breaks](#)

[lunch](#)

[reception](#)

[dinner](#)

[package](#)

[beverage](#)

[healthy](#)

[technology](#)

[INFO](#)

Billing

We welcome new accounts, but, request that credit be established through our Accounting Office if you require direct billing privileges. We require a minimum of 21 days to approve a credit application. Approved billings are payable within 30 days of receipt of the billing statement.

Deposits

Advance deposits are required on all social, political and holiday functions. These deposits are due when the contract is signed and are non-refundable and non-transferable. Full payment is due two weeks prior to function date with cash, cashiers check, money order or credit card.

Liability

The San Francisco Marriott Fisherman's Wharf reserves the right to inspect and control all private functions. Liability for damage to the premises will be charged accordingly. The Hotel cannot assume responsibility for personal property and equipment brought onto the premises.

Impossibility

Performance of agreement is contingent upon the ability of the Hotel's management to complete the same, and is subject to labor troubles, disputes or strikes, accidents, government (Federal, State or Municipal) requisitions, restrictions upon travel, transportation, food, beverages, or supplies and other causes whether enumerated herein or not, beyond control of management, preventing or interfering with performance.