



THOSE WHO CLIMB HIGHER FIND MORE

R  
RENAISSANCE®  
THE STANFORD COURT HOTEL  
SAN FRANCISCO



RENAISSANCE COLUMBUS DOWNTOWN • ESMERALDA RENAISSANCE INDIAN WELLS RESORT & SPA • RENAISSANCE FORT LAUDERDALE • RENAISSANCE SAN FRANCISCO • RENAISSANCE PARIS VENDOME • **RENAISSANCE HOTELS** • RENAISSANCE NEW YORK TIMES SQUARE • RENAISSANCE CLEVELAND • RENAISSANCE NEW ORLEANS PERE MARQUETTE • RENAISSANCE STANFORD COURT HOTEL • THE BLACKSTONE RENAISSANCE CHICAGO • RENAISSANCE LAS VEGAS • RENAISSANCE BARCELONA AIRPORT • RENAISSANCE ATLANTA DOWNTOWN • RENAISSANCE MINNEAPOLIS • RENAISSANCE LONDON CHANCERY COURT • RENAISSANCE SCHAUMBURG CONVENTION CENTER • THE WORTHINGTON RENAISSANCE • FORT WORTH RENAISSANCE • DENVER RENAISSANCE • BRUSSELS RENAISSANCE • DALLAS RICHARDSON THE INN AT BAY HARBOR • RENAISSANCE LAKE MICHIGAN GOLF RESORT • RENAISSANCE HONG KONG KOWLOON • RENAISSANCE DALLAS MARKET CENTER • RENAISSANCE MONTGOMERY HOTEL & SPA AT THE CONVENTION CENTER • RENAISSANCE MOBILE RIVERVIEW PLAZA • RENAISSANCE OKLAHOMA CITY CONVENTION CENTER RENAISSANCE BEIJING CAPITAL RENAISSANCE COLUMBUS DOWNTOWN



## ▶ AN INSPIRED NEW VISION OF URBAN LUXURY

Situated in one of San Francisco's most iconic settings, The Stanford Court Renaissance San Francisco Hotel is open and inviting, ever exciting. With modern sophistication and sense-stirring touches, it playfully winks at an illustrious past.

## ▶ A STORIED PAST

In 1876, a resplendent mansion was built atop prestigious Nob Hill by legendary entrepreneur and California Governor, Leland Stanford. The price tag at the time was an incredible \$2 million, and the home was in its day one of the most luxurious in the nation, hosting top movers and shakers.

The mansion was destroyed in the fire following the San Francisco 1906 earthquake, but a ten-foot high wall of basalt and granite surrounding the property remained. In 1912, the elegant Stanford Court Apartments was constructed on the site, which was later converted into The Stanford Court Hotel.

The original landmark may be gone, but the legend lives on in The Stanford Court Renaissance San Francisco Hotel – now more than ever, a beacon of luxury and smart sophistication.

▶ YOU'VE  
DEFINITELY ARRIVED

You're greeted by the classic Tiffany-style stained glass dome overhead – not to mention a remarkably attentive staff. Yet sleek and modern style, savvy state-of-the-art technologies and intriguing rituals tell you this is not your father's Stanford Court – it's legendary San Francisco hospitality, smartly elevated – and the perfect vantage point for exploring The City in all its finery and finesse.





## ▶ SENSUOUS RETREATS WITH SWEEPING VIEWS

With 393 tempting guest rooms and suites, The Stanford Court Renaissance invites you to envelop yourself in luxury and inspiration. Enliven your day with a stretch on your in-room yoga mat, or catch the latest on your flat-panel HDTV. Take in the views of the spectacular city all around. And, as evening closes, slip into a fluffy robe and sink into sumptuous down bedding, as your Sleep Garden Night Spa soothes you into peaceful dreams.

## ▶ THE NEW ADVENTURE THAT IS AUREA

Something surprising, fresh and totally original: Aurea, bringing avant-garde to every aspect of the sipping and social experience. Tempting coffee bar and open great-room by day, lively restaurant and lounge by night, Aurea's lure is irresistible. Please your palate with imaginative, seasonal small dishes. Help create the day's cocktail, or sample from the Cruvinet wine dispenser. Feel free to mix and mingle with connect-as-you-will "cubbies" and inviting communal tables. And let your sense of discovery come out and play with our interactive table-top bento boxes.





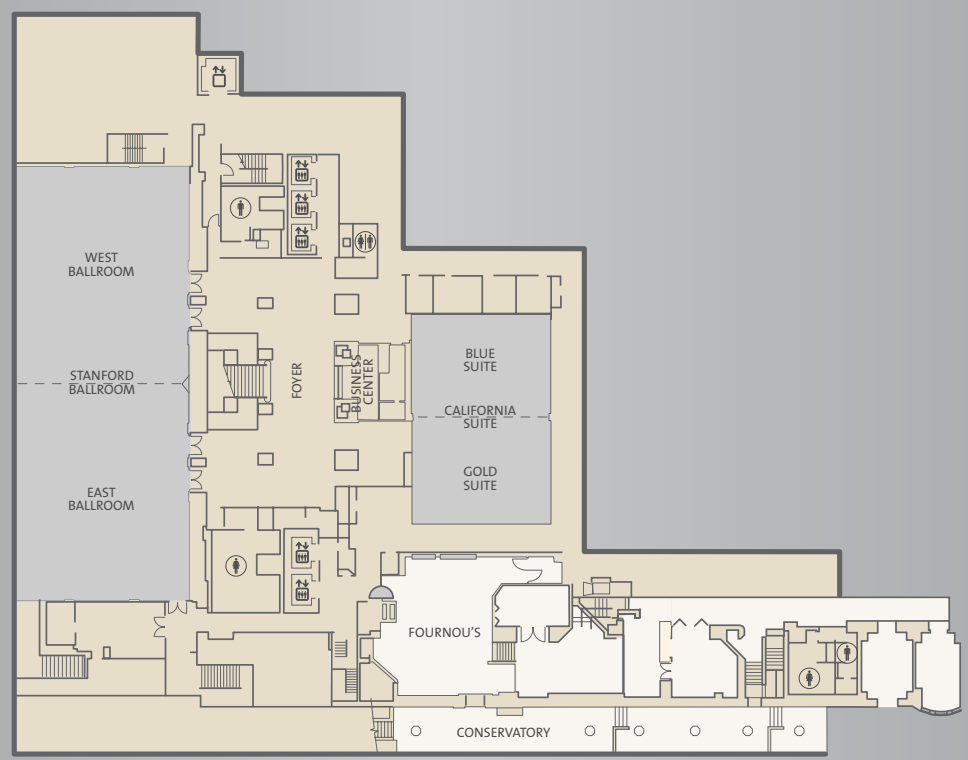
▶ **PANACHE FOR BUSINESS & PLEASURE**

Whether for a gala event or get-down-to-business meeting, The Stanford Court Renaissance offers chic, flexible space totaling 12,000 square feet to perfectly accommodate. Up-to-the-minute technical capabilities are complemented by artful and extensive catering services – and each limited only by your imagination. From the elegant Stanford Ballroom for up to 400, to a sleek private boardroom for an important few, you'll find venues that truly rise to the occasion.

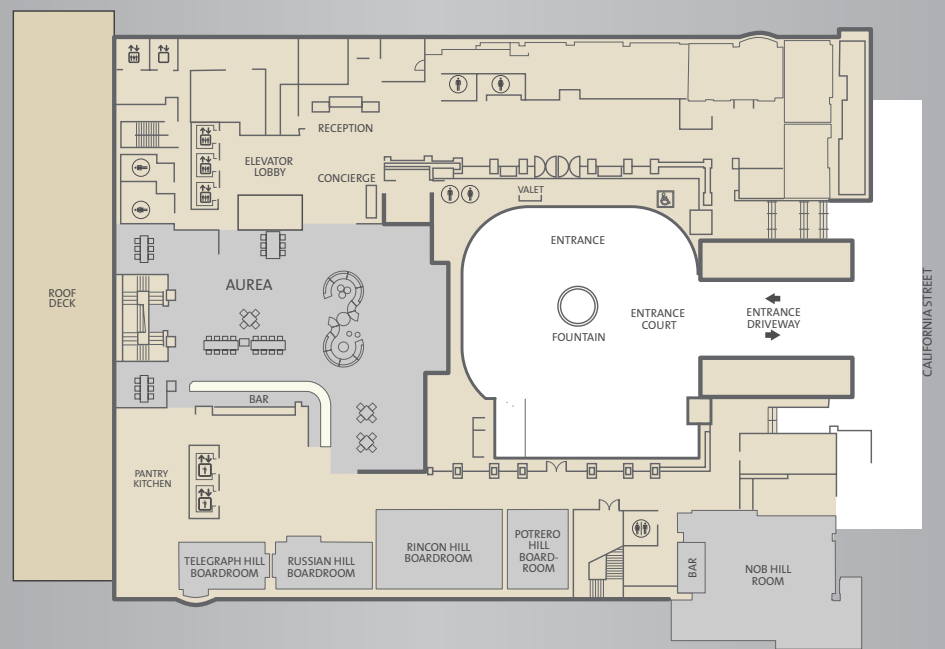


## PLANS & POSSIBILITIES

lower level



upper level



Meeting Room	Square Footage	Square Meters	Theater	Classroom	Hollow Square	Reception	Banquet	U-Shape
Rincon Hill Boardroom*	1060 sq. ft.	98 sq. m.	80	40	36	90	60	30
Russian Hill Boardroom	575 sq. ft.	53 sq. m.	40	26	24	50	36	20
Telegraph Hill Boardroom	450 sq. ft.	42 sq. m.	-	-	-	-	16	-
Nob Hill	1340 sq. ft.	124 sq. m.	45	24	23	125	80	20
Potrero Hill Boardroom	375 sq. ft.	35 sq. m.	30	12	12	35	20	12
Stanford Ballroom*	5040 sq. ft.	468 sq. m.	520	300	120	600	400	105
West Ballroom	2520 sq. ft.	234 sq. m.	260	150	72	500	156	65
East Ballroom	2520 sq. ft.	234 sq. m.	260	150	72	500	156	65
Ballroom Foyer	-	-	-	-	-	300	-	-
California Suite**	944 sq. ft.	87 sq. m.	200	120	60	250	140	50
Gold Suite	972 sq. ft.	90 sq. m.	100	60	35	100	70	25
Blue Suite	972 sq. ft.	90 sq. m.	100	60	35	100	70	25

Fournou's Room	Square Footage	Square Meters	Theater	Classroom	Hollow Square	Reception	Banquet	U-Shape
Wine Bin	200 sq. ft.	19 sq. m.	20	12	16	-	16	-
Columbine	215 sq. ft.	20 sq. m.	20	8	10	15	12	-
Tamalpais	300 sq. ft.	28 sq. m.	30	-	16	30	24	-
Mahogany	190 sq. ft.	18 sq. m.	25	12	14	15	14	-
Conservatory	-	-	-	-	-	100	80	-

\* Stanford Ballroom can be divided into West Ballroom and East Ballroom each equaling approx. 2500 sq.ft./232 sq. m.  
 \*\* California Suite can be divided into Gold Ballroom and Blue Ballroom each equaling approx. 972 sq. ft./90 sq. m.





## ▶ OPTIONS & INDULGENCES

### we are here

Located atop historic Nob Hill, The Stanford Court Renaissance is ideally set at the center of everything San Francisco—savvy visitors come to see, with sweeping views of the city, the bay, and the majestic Golden Gate Bridge.

### essentials and unessentials

393 deluxe guest rooms and suites | Luxurious bedding & down comforters | Towel warmers | Fluffy robes | Yoga mat | Remote-controlled cable-flat-panel HDTV | In-room pay movies | CD Player | In-room safe | Data port and voice mail | High-speed Internet access and Internet browser/Web TV | In-room coffee and tea | Hair dryer, iron and ironing board | AM/FM alarm clock radio | Individual climate control

### local flavor

Aurea, a fresh perspective on the San Francisco culinary and cocktail scene, features a dramatic wall of wine and inviting “cocktail cubbies.” Enjoy the best of the Bay Area and California from the stunning illuminated wine-centric bar and artisan menu of small plates. Unique rituals enhance the experience, including “vina-versity” tastings and a nightly “swording” of a Champagne bottle.

### the royal treatment

Valet parking | Concierge | Room service | Business center | Gift shop/Newsstand | Safe-deposit boxes at front desk | Baby-sitting services available | State-of-the-art Fitness Center | Limousine service | On-site laundry | Valet dry-cleaning | Shoeshine

### gracefully green

Our eco-friendly commitment includes Kitchen composting | Expanded recycling efforts | Water use reduction | Energy efficiencies

### to discover & experience

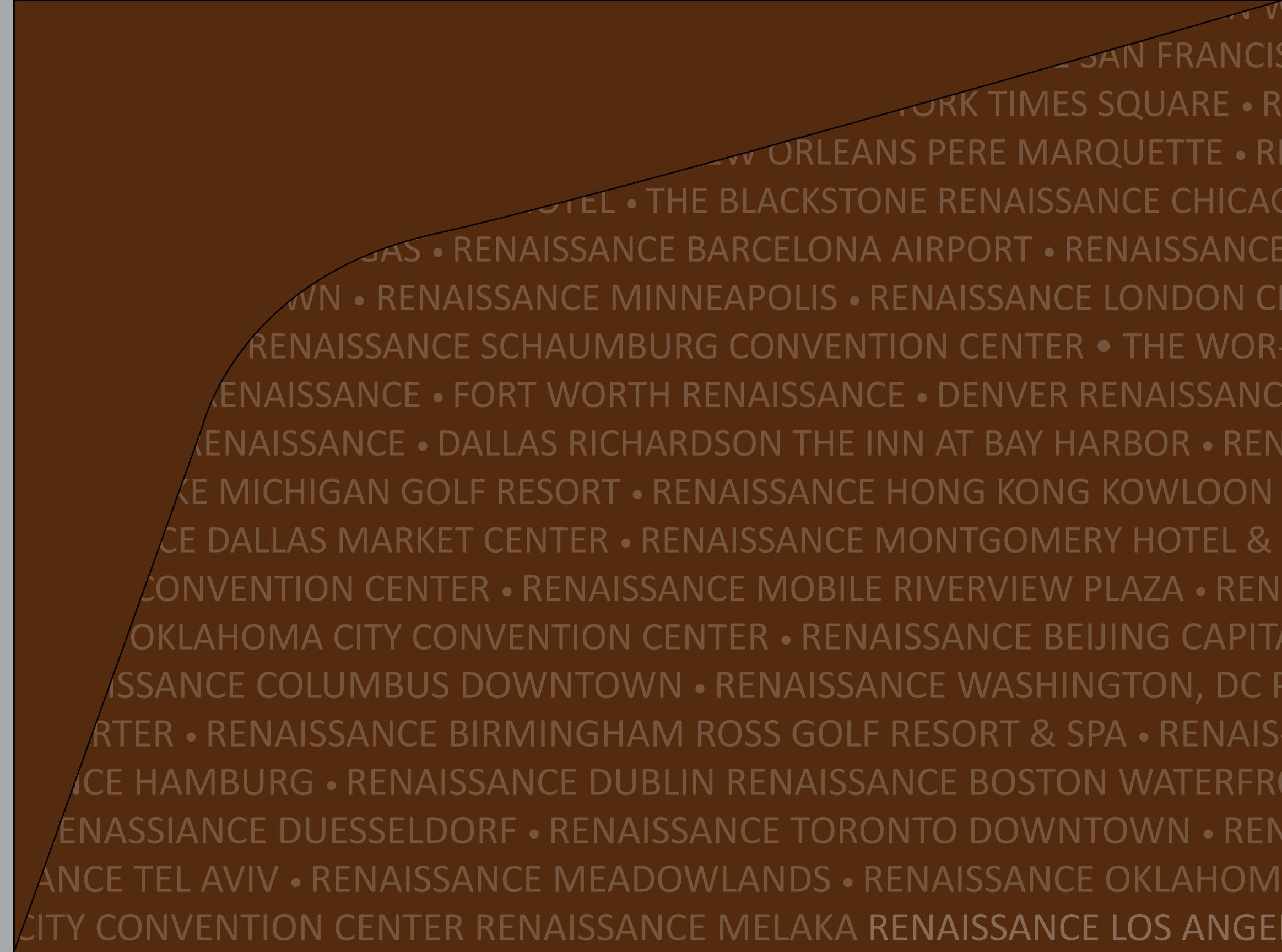
Mission District | Union Square | Chinatown | Fisherman’s Wharf | The Haight | Alcatraz | Palace of Fine Arts | Golden Gate Park | Ferry Building | Sausalito & Tiburon | Ghirardelli Square | Coit Tower | Lombard Street | North Beach | Museum of Modern Art | The Presidio | Grace Cathedral | Moscone Center | AT&T Park | The Embarcadero | Cable Cars | Wine Country | de Young Museum | Metreon | The Cliff House

### space to innovate

Meeting rooms with over 12,000 square feet of flexible space | Stanford Ballroom accommodates up to 400 for banquets | Conference and breakout rooms | On-site exhibition space | In-house meeting professionals to handle all the details | State-of-the-art A/V and teleconferencing

### the road best traveled

From San Francisco International Airport take Highway 101 North to Route 80 East towards the Bay Bridge. Exit at Fourth Street, making a left onto Bryant. Go one block, before turning left onto Third Street. Continue for five blocks to Market Street. Cross Market onto Kearny Street and go another five blocks before making a left onto California. Proceed up California three blocks to the hotel.





The Stanford Court Renaissance® San Francisco Hotel | 905 California Street | Nob Hill | San Francisco | California 94108

Phone: 1.415.989.3500 | [www.StanfordCourt.com](http://www.StanfordCourt.com)