

FIVE STAR LUXURY IN THE HEART OF SYDNEY

Marriott
 SYDNEY HARBOUR
 CIRCULAR QUAY



Set in the heart of Circular Quay overlooking the Harbour Bridge and Opera House, Sydney Harbour Marriott is a truly luxurious hotel in one of the world's most stunning locations.

Guests will enjoy spectacular city and harbour views from all 563 spacious and contemporary rooms and suites, superb on site dining including Sydney's best seafood buffet, and of course, outstanding service.

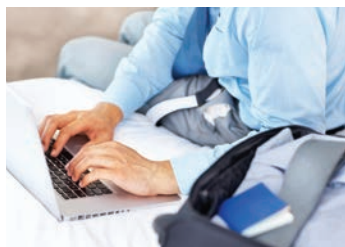
From boardroom meetings to large scale conferences and events, Sydney Harbour Marriott offers a location that surpasses all others.

- 563 deluxe rooms and suites
- Stunning city and harbour views
- Luxurious Revive bedding
- Contemporary decor
- Ergonomic work zones
- iPod docking stations
- Large 42" flat screen LCD TVs
- High speed broadband internet with wireless access
- 24 hour room service
- Icons Restaurant
- Macquarie Lounge Cocktail Bar
- Historic Customs House Bar
- Pool, spa and 24-hour health club
- Early Arrivals Lounge with showers
- Executive Lounge
- Valet parking
- Business Centre
- Marriott Rewards® frequent guest program

TOP 2 HOTELS, OCEANIA REGION
 2011 CONDÉ NAST TRAVELER READERS' CHOICE AWARDS
 TOP 10 CITY HOTELS, AUSTRALIA, NEW ZEALAND
 & THE SOUTH PACIFIC
 TRAVEL + LEISURE WORLD'S BEST AWARDS READERS'
 SURVEY, 2010 & 2011

SYDNEY HARBOUR MARRIOTT CIRCULAR QUAY
 30 Pitt Street Sydney NSW 2000 Australia
 Telephone: 1800 062 230 / 61 2 9259 7000
 Facsimile: 61 2 9251 1122
 sydneyharbour.reservations@marriotthotels.com
 www.sydneyharbourmarriott.com.au

CONFERENCES AND EVENTS AS IMPRESSIVE AS THE LOCATION



ORGANISE EVENTS WITH EASE

- 18 meeting rooms totalling over 1,410 sq m of space
- State-of-the-art technology and equipment
- On site event managers and wedding planner
- A delicious variety of catering and beverage packages
- Private tour and group check in desk
- Executive level and Executive Lounge
- High-speed broadband internet with wireless access
- Coach and bus pick up/set down in front of the Hotel
- Early Arrivals Lounge
- Business Centre

CAPACITY BY FLOOR SET UP

	Theatre	Classroom	Boardroom	Ushape	Reception	Banquet	Cabaret
LEVEL 2							
Thomas Keneally I & II	250	159	60	60	250	220	160
Thomas Keneally I	50	30	22	21	100	100	64
Thomas Keneally II	128	66	40	36	120	100	80
LEVEL 3							
Henry Lawson I & II	200	96	60	60	200	160	96
Henry Lawson I	60	30	30	24	40	50	32
Henry Lawson II	114	66	40	36	100	90	56
Dorothea Mackellar	80	48	22	21	80	90	48
Banjo Paterson	70	45	27	27	60	50	32
Norman Lindsay	24	18	15	—	—	20	—

	Banquet	Cabaret	Theatre	Boardroom
LEVEL 7				
Ruth Park Lounge	—	—	—	12
Miles Franklin	—	—	—	12
Colleen McCullough	—	—	—	12
May Gibbs	—	—	—	12
Boardroom 2	20	16	20	16
Boardroom 3	10	8	15	8
Boardroom 6	—	—	—	12
Boardroom 7	—	—	—	12
Boardroom 8	—	—	—	12