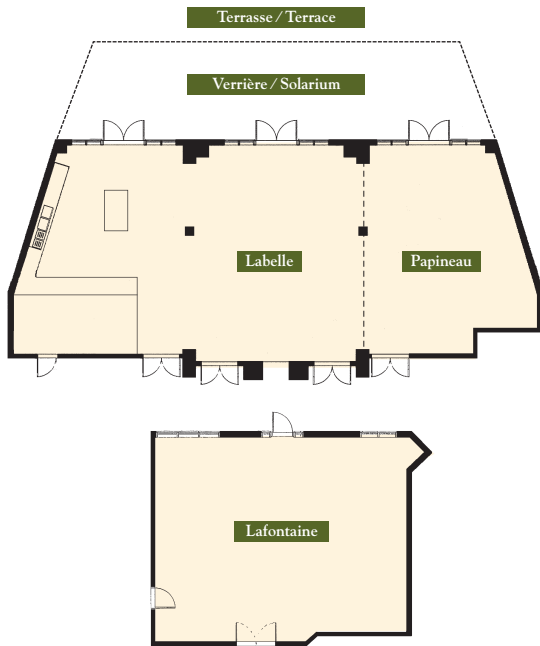


# Nos installations d'affaires

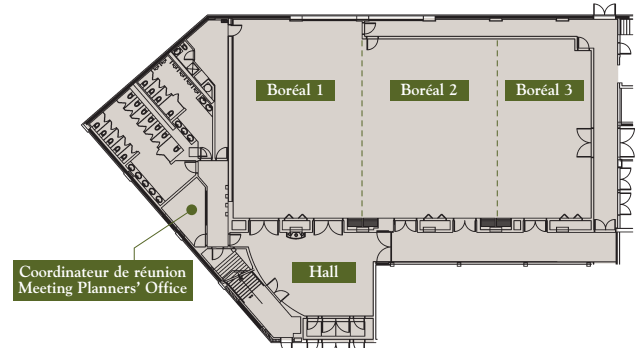
## Our conference facilities

### Marriott Residence Inn

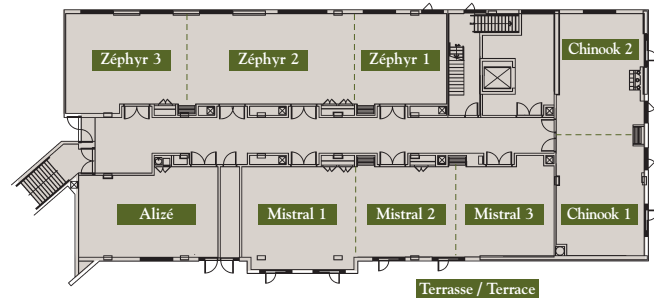


### Centre des Congrès / Conference Centre

#### REZ-DE-CHAUSSÉE / GROUND FLOOR



#### 1<sup>ER</sup> ÉTAGE / 1<sup>ST</sup> FLOOR



- Plus de 15 000 pi<sup>2</sup> de superficie totale
- 16 salles de réunion, dont 2 salles exécutives avec foyer
- Verrière et terrasse pouvant accueillir 150 personnes (style cocktail)
- *More than 15,000 sq. ft. of total meeting space*
- *16 meeting rooms, including 2 executive rooms with fireplace*
- *Our solarium terrace can accommodate 150 people (cocktail layout)*

Salles de réunions Meeting rooms	Dimensions Dimensions					
Lafontaine	720 pi <sup>2</sup> 24' X 30'	36	35	27	60	48
Labelle	700 pi <sup>2</sup> 25' X 28'	33	25	20	45	40
Papineau	644 pi <sup>2</sup> 23' X 28'	30	20	15	40	32
Verrière / Solarium	816 pi <sup>2</sup> 48' X 17'	sur demande/on demand				

#### Centre des congrès Tremblant

Boréal 1	1945 pi <sup>2</sup>	36' X 54'	140	90	78	182	160
Boréal 2	1795 pi <sup>2</sup>	36' X 49'	126	82	70	168	120
Boréal 3	1275 pi <sup>2</sup>	26' X 49'	82	64	54	108	88
Alizé	683 pi <sup>2</sup>	33' X 21'	42	34	28	58	48
Mistral 1	653 pi <sup>2</sup>	27' X 24'	44	32	26	50	48
Mistral 2	575 pi <sup>2</sup>	26' X 21'	32	28	22	50	40
Mistral 3	459 pi <sup>2</sup>	20' X 21'	24	22	16	38	32
Chinook 1	586 pi <sup>2</sup>	21' X 28'	-	14	-	-	-
Chinook 2	580 pi <sup>2</sup>	20' X 29'	-	14	-	-	-
Zéphyr 1	467 pi <sup>2</sup>	21' X 21'	24	26	20	42	32
Zéphyr 2	903 pi <sup>2</sup>	42' X 22'	64	50	44	90	72
Zéphyr 3	597 pi <sup>2</sup>	26' X 21'	32	28	22	52	40