

HOTEL BERLIN
CENTRAL DISTRICT

INSPIRED EVENTS THOUGHTFULLY CRAFTED



INSPIRED EVENTS

Occupying a prime location on Potsdamer Platz in the heart of the city between Kurfürstendamm and the Brandenburg Gate, Hotel Berlin Central District is one of the capital's largest event hotels.

An homage on the Roaring '20s, the architectural style impresses with its clever combination of classical ambience and state-of-the-art infrastructure. Backed by professional service, a total of 48 flexibly partitionable/combinable event rooms covering 5,500 sq.m. are available.

Experience the practically unlimited possibilities ranging from S to XXL. Be it the large ballroom, smaller meeting rooms or on the exclusive rooftop terrace with its fabulous view over the square - we'll help you plan your perfect event.



OUR MEETING FACILITIES

In our conference facilities we are able to host up to 5,500 people. The hotel features two large ballrooms with stages (one of them is able to accommodate up to 3,200 people) and additional 46 event rooms, conference rooms and business suites of various size and partitionable flexibility with state-of-the-art equipment.

EVENT WITH THE VIEW

Our rooftop terrace may be exclusively reserved and offers fabulous views over Potsdamer Platz for your event. It's perfect for elegant receptions and summer barbecues.

CONFERENCE EQUIPMENT

Our hotel offers stages, professional PA systems, control panels for audio and lighting, wireless digital conferencing system, freight elevator, and many more.

All rooms have superior data projectors, screens and state-of-the-art communication infrastructures including the ability to network between conference rooms.



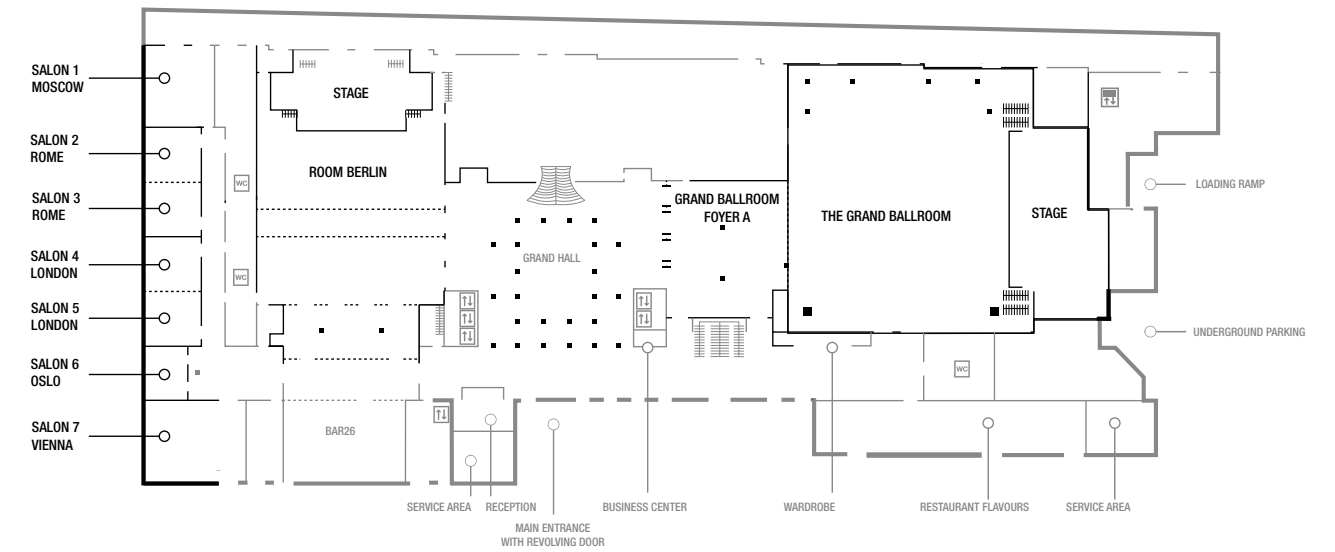
ROOMS AND SUITES

A total of 505 elegantly furnished rooms including 66 suites, among them ten exclusive suites in the secured suite tower. All rooms feature TV with German and international channels, air conditioning with individual climate control, laptop-sized room safe and minibar.

LOCATION

Thanks to its unique location Hotel Berlin Central District is the ideal starting point for numerous activities. Cultural attractions such as the world famous Philharmonic hall, the New National Gallery and the Picture Gallery are located within the direct vicinity of the hotel. On top of that, the hotel borders a huge park considered the city's green heart: the Tiergarten. Numerous sightseeing highlights such as the Brandenburg Gate, Potsdamer Platz, the Sony Centre, Stage Musical Theatre and sought-after shopping such as the Mall of Berlin and the Ku'damm are quickly reached.

GROUND FLOOR



| GROUND FLOOR | sq.m. | Height | Door Size (w/h) | Natural Light / Darkeing | WiFi / Wired LAN* | Floor Covering | Theatre Style | Class-room Style | U-Shape Outside | Banquet Round Tables | Banquet Long Tables | Block |
|----------------------------|-------|---------------|-----------------|--------------------------|-------------------|----------------|---------------|------------------|-----------------|----------------------|---------------------|-------|
| Gallery + Hotel Lobby I+II | 2.135 | 3,00 - 8,20 m | 3,00/2,45 m | +/- | +/- | Natural Stone | - | - | - | - | - | - |
| Gallery | 900 | 3,00 - 4,40 m | - | +/- | +/- | Natural Stone | - | - | - | - | - | - |
| Hotel Lobby I | 700 | 3,00 - 8,20 m | - | +/- | +/- | Natural Stone | - | - | - | - | - | - |
| Hotel Lobby II | 535 | 3,50 m | - | +/- | +/- | Natural Stone | - | - | - | - | - | - |

HALLS

| | | | | | | | | | | | | |
|--|-------|---------------|-------------|-----|-----|--------|-------|-------|-----|-------|-------|-----|
| Grand Ballroom with Stage incl. Foyer | 1.650 | 3,00 - 8,55 m | 2,90/2,73 m | +/- | +/- | Carpet | 1.780 | 990 | 160 | 910 | 1.140 | 200 |
| Gallery Grand Ballroom incl. Foyer | 510 | 3,00 m | 2,80/2,73 m | +/- | +/- | Carpet | 545 | 280 | - | 280 | 310 | - |
| Grand Ballroom and Gallery incl. Foyer | 2.160 | | | +/- | +/- | Carpet | 2.325 | 1.270 | | 1.200 | 1.440 | |
| Grand Ballroom Foyer A | 345 | 2,92 - 3,20 m | 2,90/2,73 m | +/- | +/- | Carpet | 360 | 220 | 45 | 210 | 280 | - |
| Grand Ballroom Foyer B | 440 | 2,92 - 3,00 m | 2,80/2,73 m | +/- | +/- | Carpet | 480 | 250 | 45 | 200 | 320 | |
| Room Berlin with Stage | 1.070 | 6,60 - 6,85 m | 2,55/3,45 m | +/- | +/- | Carpet | 1.225 | 751 | 100 | 670 | 850 | 120 |
| Room Berlin Section A with Stage | 635 | 6,60 - 6,85 m | 2,55/3,45 m | +/- | +/- | Carpet | 650 | 395 | 80 | 360 | 450 | 100 |
| Room Berlin Section B with Stage | 530 | 6,60 - 6,85 m | 2,55/3,45 m | +/- | +/- | Carpet | 480 | 320 | 60 | 290 | 340 | 80 |
| Room Berlin Section C | 380 | 6,60 - 6,85 m | 2,70/2,73 m | +/- | +/- | Carpet | 456 | 280 | 60 | 270 | 370 | 80 |
| Room Berlin Section D | 275 | 6,60 - 6,85 m | 2,70/2,73 m | +/- | +/- | Carpet | 357 | 180 | 50 | 180 | 250 | 60 |
| Room Berlin Section E | 160 | 3,00 m | 2,70/2,73 m | +/- | +/- | Carpet | 220 | 120 | | 100 | 140 | |

GROUND FLOOR

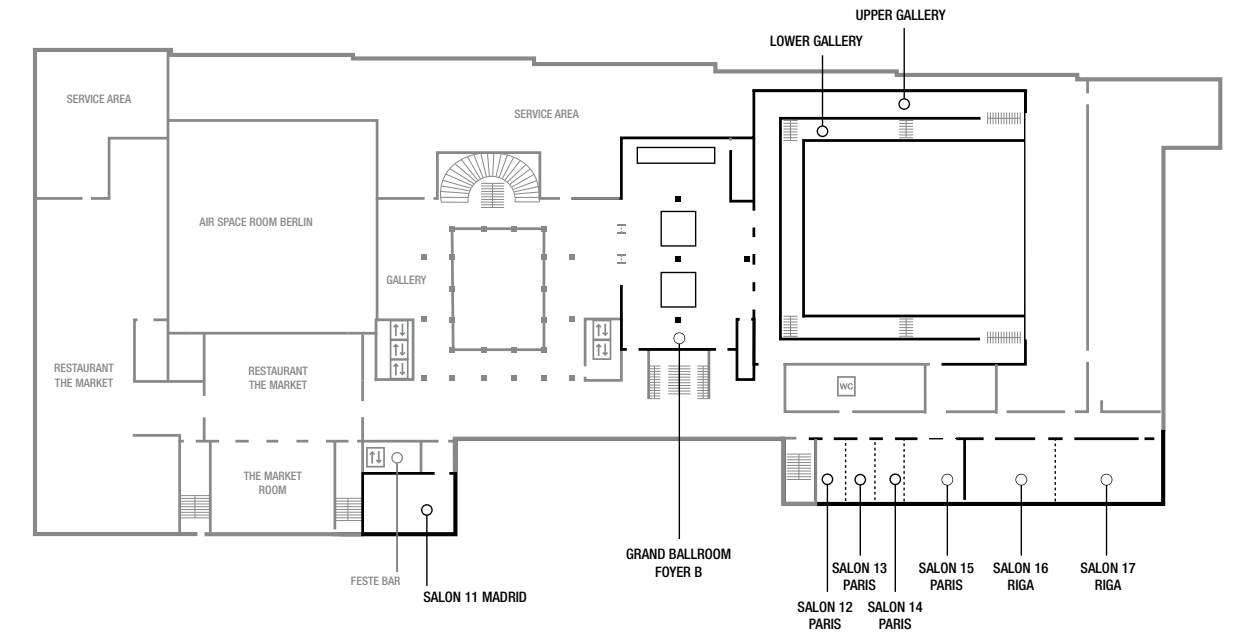
| | | | | | | | | | | | | |
|------------------|-----|---------------|-------------|-----|-----|--------|-----|----|----|-----|-----|----|
| Salon 1 Moscow | 105 | 3,00 - 3,30 m | 1,10/2,13 m | +/- | +/- | Carpet | 125 | 75 | 35 | 80 | 90 | 40 |
| Salon 2 Rome | 55 | 3,00 - 3,30 m | 1,10/2,13 m | +/- | +/- | Carpet | 60 | 32 | 20 | 30 | 36 | 25 |
| Salon 3 Rome | 55 | 3,00 - 3,30 m | 1,10/2,13 m | +/- | +/- | Carpet | 60 | 32 | 20 | 30 | 36 | 25 |
| Salon 2+3 Rome | 110 | 3,00 - 3,30 m | 1,10/2,13 m | +/- | +/- | Carpet | 125 | 72 | 40 | 70 | 88 | 45 |
| Salon 4 London | 55 | 3,00 - 3,30 m | 1,10/2,13 m | +/- | +/- | Carpet | 60 | 32 | 20 | 30 | 36 | 25 |
| Salon 5 London | 55 | 3,00 - 3,30 m | 1,10/2,13 m | +/- | +/- | Carpet | 60 | 32 | 20 | 30 | 36 | 25 |
| Salon 4+5 London | 110 | 3,00 - 3,30 m | 1,10/2,13 m | +/- | +/- | Carpet | 125 | 72 | 40 | 70 | 88 | 45 |
| Salon 6 Oslo | 40 | 3,00 - 3,45 m | 1,10/2,13 m | +/- | +/- | Carpet | 45 | 25 | 17 | 20 | 20 | 20 |
| Salon 7 Vienna | 160 | 3,00 - 3,40 m | 1,10/2,13 m | +/- | +/- | Carpet | 200 | 98 | 42 | 100 | 108 | 55 |

Stage dimensions (w/h/d): Grand Ballroom: 33,50/5,70/9,00 m; Hall Berlin: 23,00/4,56/8,50 m

* = yes, - = no *with charge



1st FLOOR



| 1 ST FLOOR | sq.m. | Height | Door Size (w/h) | Natural Light / Darkeing | WiFi / Wired LAN* | Floor Covering | Theatre Style | Class-room Style | U-Shape Outside | Banquet Round Tables | Banquet Long Tables | Block |
|-------------------------|-------|---------------|-----------------|--------------------------|-------------------|----------------|---------------|------------------|-----------------|----------------------|---------------------|-------|
| Salon 11 Madrid | 90 | 3,40 - 3,70 m | 1,10/2,13 m | +/- | +/- | Carpet | 75 | 48 | 28 | 50 | 52 | 35 |
| Salon 12 Paris | 26 | 3,15 m | 1,10/2,13 m | +/- | +/- | Carpet | 25 | 15 | 14 | 10 | 18 | 18 |
| Salon 14 Paris | 26 | 3,15 m | 1,10/2,13 m | +/- | +/- | Carpet | 25 | 15 | 14 | 10 | 18 | 18 |
| Salon 12+13+14+15 Paris | 140 | 3,15 m | 1,10/2,13 m | +/- | +/- | Carpet | 160 | 95 | 58 | 90 | 108 | 55 |
| Salon 17 Riga | 95 | 3,15 m | 1,10/2,13 m | +/- | +/- | Carpet | 100 | 75 | 41 | 70 | 72 | 45 |
| The Market Room | 180 | 3,10 - 3,35 m | 1,10/2,13 m | +/- | +/- | Carpet | 160 | 140 | 46 | 90 | 130 | 75 |

GUEST SERVICES

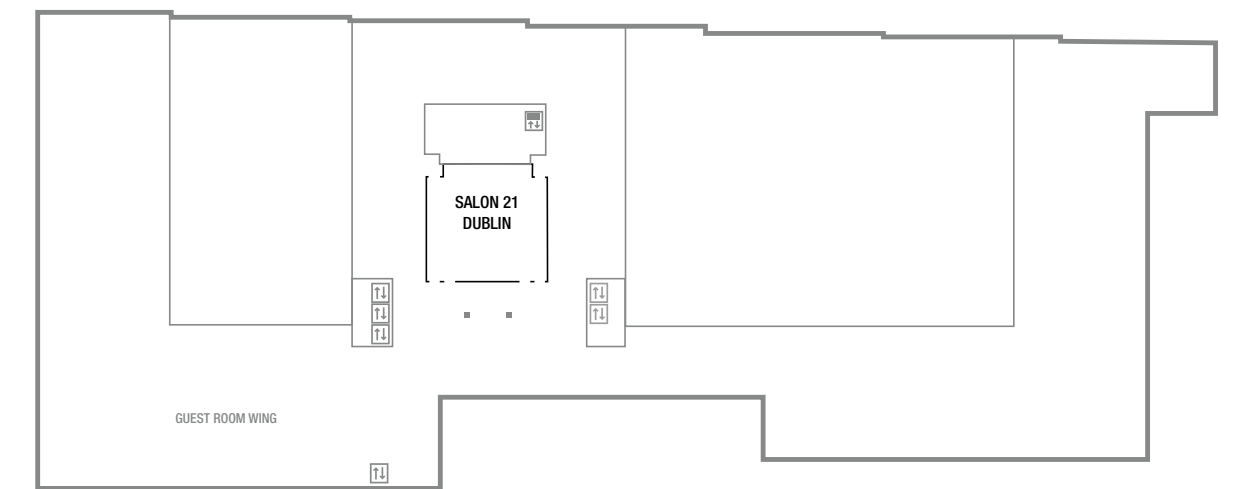
Dine in one of our two restaurants or unwind in the bar. Our hotel features a swimming pool, sauna, steam bath and fitness room. We offer concierge service and free Internet. Basement garage for 478 vehicles is available (external operator).

MARRIOTT BONVOY EVENTS™

Make the most of meetings and events with Marriott Bonvoy™ Events and get rewarded for your work. Planners who are Marriott Bonvoy™ members can earn up to 60,000 points for booking qualifying events at our participating properties.

Redeem the points you earn for VIP experiences with Marriott Bonvoy Moments™, free nights, flights, car rentals, shopping and more. Register now: marriottbonvoyevents.com.

2nd FLOOR

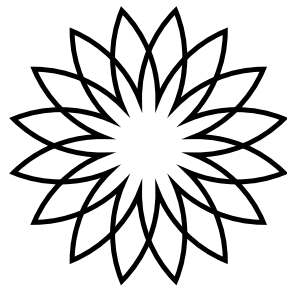


| 2 ND FLOOR | sq.m. | Height | Door Size (w/h) | Natural Light / Darkeing | WiFi / Wired LAN* | Floor Covering | Theatre Style | Class-room Style | U-Shape Outside | Banquet Round Tables | Banquet Long Tables | Block |
|-----------------------|-------|---------------|-----------------|--------------------------|-------------------|----------------|---------------|------------------|-----------------|----------------------|---------------------|-------|
| Salon 21 Dublin | 250 | 3,80 - 4,50 m | 1,10/2,13 m | -/- | +/- | Carpet | 254 | 160 | 52 | 140 | 178 | 85 |

27 Conference Suites for 8 to 24 people

Stage dimensions (w/h/d): Grand Ballroom: 33,50/5,70/9,00 m; Hall Berlin: 23,00/4,56/8,50 m

+ = yes, - = no *with charge



HOTEL BERLIN
CENTRAL DISTRICT

Hotel Berlin Central District
Stauffenbergstraße 26, 10785 Berlin, Germany
Tel: +49 30 20650
e-mail: events@hotelberlincentraldistrict.com
www.hotelberlincentraldistrict.com