

HOTEL BERLIN  
CENTRAL DISTRICT

# INSPIRED EVENTS THOUGHTFULLY CRAFTED



## INSPIRED EVENTS

Occupying a prime location on Potsdamer Platz in the heart of the city between Kurfürstendamm and the Brandenburg Gate, Hotel Berlin Central District is one of the capital's largest event hotels.

An homage on the Roaring '20s, the architectural style impresses with its clever combination of classical ambience and state-of-the-art infrastructure. Backed by professional service, a total of 48 flexible event rooms covering 5,500 sq.m. event space in total are available.

Experience the practically unlimited possibilities, be it the Grand Ballroom, smaller meeting rooms or on the exclusive rooftop terrace with its fabulous view over Potsdamer Platz – we'll help you plan your perfect event.





## OUR MEETING FACILITIES

In our conference facilities we are able to host up to 5,500 people in 48 meeting rooms. The hotel features two large ballrooms with stages (one of them is able to accommodate up to 2,300 people) and additional event rooms and business suites of various size and partitionable flexibility with state-of-the-art equipment.

## EVENT WITH THE VIEW

The rooftop terrace of the Presidential Suite may be exclusively reserved and offers fabulous views over Potsdamer Platz for your event. It's perfect for elegant receptions and summer barbecues.



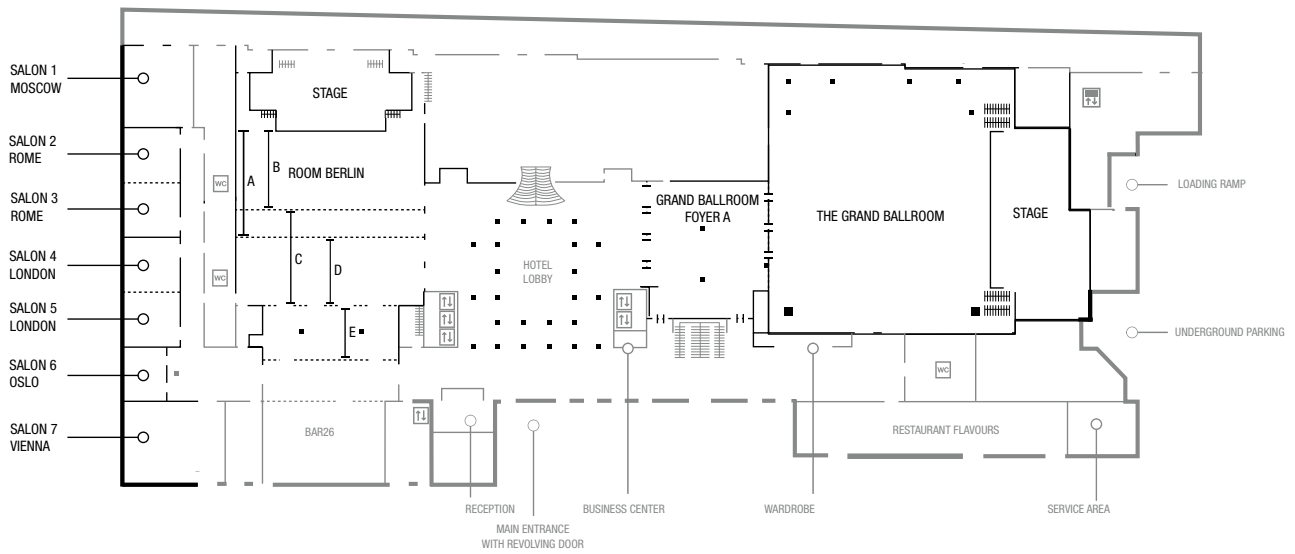
## ROOMS AND SUITES

A total of 505 elegantly furnished rooms from 31 sqm including 66 suites. All rooms feature TV with German and international channels, air conditioning with individual climate control, laptop-sized room safe and a kettle coffee and tea as well as free Wifi.

## LOCATION

Thanks to its unique location Hotel Berlin Central District is the ideal starting point for numerous activities. Cultural attractions such as the world famous Philharmonic hall, the New National Gallery and the Picture Gallery are located within the direct vicinity of the hotel. On top of that, the hotel borders a huge park considered the city's "green heart": the Tiergarten. Numerous sightseeing highlights such as the Brandenburg Gate, Potsdamer Platz, the Sony Centre and sought-after shopping such as the Mall of Berlin Galeries Lafayette and the Ku'damm are quickly reached.

# GROUND FLOOR



## CAPACITIES

	sq.m.	Height	Door Size (w/h)	Natural Light / Darkeing	WiFi / Wired LAN*	Floor Covering	Theatre Style	Class-room Style	U-Shape Outside	Banquet Round Tables	Banquet Long Tables	Block
Gallery + Hotel Lobby I+II	2.135	3,00 - 8,20 m	3,00/2,45 m	•/-	•/•	Natural Stone	-	-	-	-	-	-
Gallery	900	3,00 - 4,40 m	-	•/-	•/•	Natural Stone	-	-	-	-	-	-
Hotel Lobby I	700	3,00 - 8,20 m	-	•/-	•/•	Natural Stone	-	-	-	-	-	-
Hotel Lobby II	535	3,50 m	-	•/-	•/•	Natural Stone	-	-	-	-	-	-

## HALLS

Grand Ballroom with Stage incl. Foyer	1.650	3,00 - 8,55 m	2,90/2,73 m	•/•	•/•	Carpet	1.780	990	160	910	1.140	200
Gallery Grand Ballroom incl. Foyer	510	3,00 m	2,80/2,73 m	•/•	•/•	Carpet	545	280	-	280	310	-
Grand Ballroom and Gallery incl. Foyer	2.160	-	-	•/•	•/•	Carpet	2.325	1.270	-	1.200	1.440	-
Grand Ballroom Foyer A	345	2,92 - 3,20 m	2,90/2,73 m	•/•	•/•	Carpet	360	220	45	210	280	-
Grand Ballroom Foyer B	440	2,92 - 3,00 m	2,80/2,73 m	•/-	•/•	Carpet	480	250	45	200	320	-
Hall Berlin with Stage	1.070	6,60 - 6,85 m	2,55/3,45 m	•/•	•/•	Carpet	1.225	751	100	670	850	120
Hall Berlin Section A with Stage	635	6,60 - 6,85 m	2,55/3,45 m	•/•	•/•	Carpet	650	395	80	360	450	100
Hall Berlin Section B with Stage	530	6,60 - 6,85 m	2,55/3,45 m	•/•	•/•	Carpet	480	320	60	290	340	80
Hall Berlin Section C	380	6,60 - 6,85 m	2,70/2,73 m	•/•	•/•	Carpet	456	280	60	270	370	80
Hall Berlin Section D	275	6,60 - 6,85 m	2,70/2,73 m	•/•	•/•	Carpet	357	180	50	180	250	60
Hall Berlin Section E	160	3,00 m	2,70/2,73 m	•/•	•/•	Carpet	220	120	-	100	140	-

## GROUND FLOOR

Salon 1 Moscow	105	3,00 - 3,30 m	1,10/2,13 m	•/•	•/•	Carpet	125	75	35	80	90	40
Salon 2 Rome	55	3,00 - 3,30 m	1,10/2,13 m	•/•	•/•	Carpet	60	32	20	30	36	25
Salon 3 Rome	55	3,00 - 3,30 m	1,10/2,13 m	•/•	•/•	Carpet	60	32	20	30	36	25
Salon 2+3 Rome	110	3,00 - 3,30 m	1,10/2,13 m	•/•	•/•	Carpet	125	72	40	70	88	45
Salon 4 London	55	3,00 - 3,30 m	1,10/2,13 m	•/•	•/•	Carpet	60	32	20	30	36	25
Salon 5 London	55	3,00 - 3,30 m	1,10/2,13 m	•/•	•/•	Carpet	60	32	20	30	36	25
Salon 4+5 London	110	3,00 - 3,30 m	1,10/2,13 m	•/•	•/•	Carpet	125	72	40	70	88	45
Salon 6 Oslo	40	3,00 - 3,45 m	1,10/2,13 m	•/•	•/•	Carpet	45	25	17	20	20	20
Salon 7 Vienna	160	3,00 - 3,40 m	1,10/2,13 m	•/•	•/•	Carpet	200	98	42	100	108	55

Stage dimensions (w/h/d): Grand Ballroom: 33,50/5,70/9,00 m; Hall Berlin: 23,00/4,56/8,50 m  
 • = yes, - = no \*with charge



## GUEST SERVICES

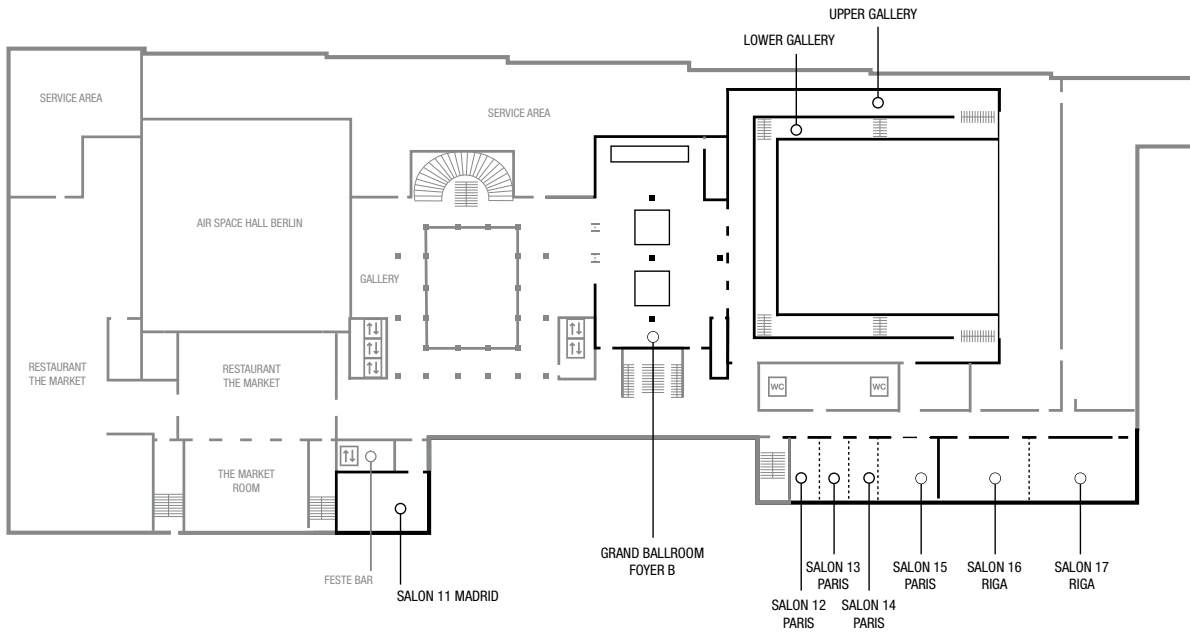
Dine in our restaurant „The Market“ or unwind in the bar. Our hotel features a swimming pool, sauna, steam bath and fitness room. We offer concierge service and free Internet. A basement garage for 478 vehicles is available.

## MARRIOTT BONVOY EVENTS™

Make the most of meetings and events with Marriott Bonvoy™ Events and get rewarded for your work. Planners who are Marriott Bonvoy™ members can earn up to 60,000 points for booking qualifying events at our participating properties.

Redeem the points you earn for VIP experiences with Marriott Bonvoy Moments™, free nights, flights, car rentals, shopping and more. Register now: [marriottbonvoyevents.com](https://marriottbonvoyevents.com).

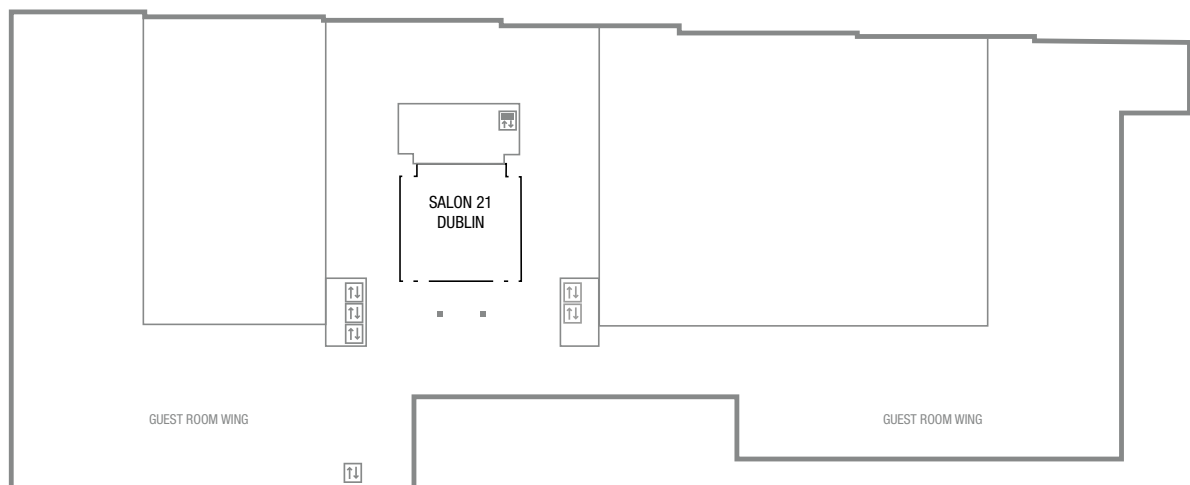
# 1<sup>st</sup> FLOOR



CAPACITIES	sq.m.	Height	Door Size (w/h)	Natural Light / Darkeing	WiFi / Wired LAN*	Floor Covering	Theatre Style	Class-room Style	U-Shape Outside	Banquet Round Tables	Banquet Long Tables	Block
Salon 11 Madrid	90	3,40 - 3,70 m	1,10/2,13 m	•/•	•/•	Carpet	75	48	28	50	52	35
Salon 12 Paris	26	3,15 m	1,10/2,13 m	•/•	•/•	Carpet	25	15	14	10	18	18
Salon 13 Paris	26	3,15 m	1,10/2,13 m	•/•	•/•	Carpet	25	15	14	10	18	18
Salon 14 Paris	26	3,15 m	1,10/2,13 m	•/•	•/•	Carpet	25	15	14	10	18	18
Salon 15 Paris	55	3,15 m	1,10/2,13 m	•/•	•/•	Carpet	55	32	22	30	40	30
Salon 12+13+14+15 Paris	140	3,15 m	1,10/2,13 m	•/•	•/•	Carpet	160	95	58	90	108	55
Salon 16 Riga	80	3,15 m	1,10/2,13 m	•/•	•/•	Carpet	90	65	36	50	64	42
Salon 17 Riga	95	3,15 m	1,10/2,13 m	•/•	•/•	Carpet	100	75	41	70	72	45
Salon 16+17 Riga	175	3,15 m	1,10/2,13 m	•/•	•/•	Carpet	200	140	70	120	140	75
The Market Room	180	3,10 - 3,35 m	1,10/2,13 m	•/•	•/•	Carpet	160	140	46	90	130	75

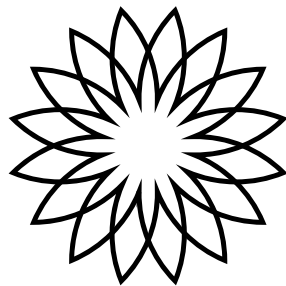
Restaurant The Market: 1199 m<sup>2</sup> für bis zu 550 Personen

# 2<sup>nd</sup> FLOOR



2 <sup>ND</sup> FLOOR	sq.m.	Height	Door Size (w/h)	Natural Light / Darkeing	WiFi / Wired LAN*	Floor Covering	Theatre Style	Class-room Style	U-Shape Outside	Banquet Round Tables	Banquet Long Tables	Block
Salon 21 Dublin	250	3,80 - 4,50 m	1,10/2,13 m	-/-	•/•	Carpet	254	160	52	140	178	85
Conference Suites	for 8 to 24 people											

Stage dimensions (w/h/d): Grand Ballroom: 33,50/5,70/9,00 m; Hall Berlin: 23,00/4,56/8,50 m  
 • = yes, - = no \*with charge



HOTEL BERLIN  
CENTRAL DISTRICT

Hotel Berlin Central District

Stauffenbergstraße 26, 10785 Berlin, Germany

Phone: +49 30 2065-1436 Fax: +49 30 2065-1010

E-Mail: [events@hotelberlincentraldistrict.com](mailto:events@hotelberlincentraldistrict.com)

[www.hotelberlincentraldistrict.com](http://www.hotelberlincentraldistrict.com)