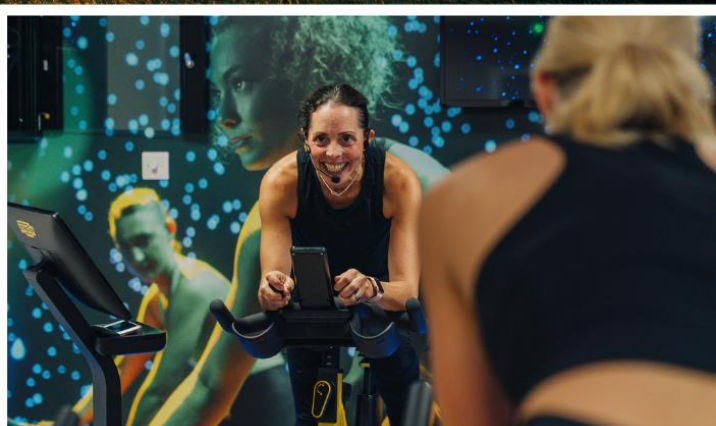


# MEMBERSHIP PRICING AND BENEFITS

---



HANBURY MANOR  
MARRIOTT HOTEL & COUNTRY CLUB

## Membership Pricing *Annual subscriptions include 20% VAT*

LEISURE	Debenture (£)	Annual Subscription (£)
Individual (ages 32+)	Fees apply, please enquire with the Membership Office	2,040
Individual (ages 18-31)		1,065
Non-UK Resident		1,020
Spouse/Partner	Terms apply	1,665
<b>Corporate Leisure</b>		
Two card holders	Fees apply, please enquire with the Membership Office	4,065
Three card holders		5,160
Four card holders		6,775
Family Leisure (ages 0-6)	Terms apply	0
Junior (ages 7-17)	Terms apply	
- Leisure only		300
- Golf and leisure		575

GOLF	Debenture (£)	Annual Subscription (£)
Individual (ages 32+)	Fees apply, please enquire with the Membership Office	2,735
Individual (ages 18-31)		1,365
Non-UK Resident		1,365
5-Day Golf Membership (M-F)	Terms apply	1,855
Junior (ages 7-17)	Terms apply	
- Golf only		300
- Golf and leisure		575

COUNTRY CLUB (Golf & Leisure)	Debenture (£)	Annual Subscription (£)
Individual (ages 32+)	Fees apply, please enquire with the Membership Office	3,470
Individual (ages 18-31)		1,850
Non-UK Resident		1,735
Spouse/Partner		
Individual (ages 32+)	Fees apply, please enquire with the Membership Office	1,460
Individual (18-31)		730
Non-UK resident		730
Family Leisure		
- Spouse/Partner	Terms apply	700
- Child (ages 0-17) *of Corporate Golf Card Holder or Full Country Club		0
Corporate Golf and Leisure		
One card holder	Fees apply, please enquire with the Membership Office	3,715
Two card holder		7,430
Three card holder		11,145
Four card holder		14,860

Terms and conditions

The spouse/partner and children of a **Full Country Club Member** or **Corporate Golf Card Holder** may be included on the membership as **Family Leisure Users** without a further Debenture requirement (see leisure subscription rates).

# Membership Benefits

	Inclusions
<b>Savings</b>	<p>20% point-of-sale discount in all Food &amp; Beverage outlets for both food and drink  <i>*up to 3 guests per member</i></p> <p>10% discount for private member functions (i.e. weddings, special occasions etc.)  <i>*applies to children and parents of member</i></p> <p>20% discount on spa treatments, spa, golf and leisure retail items <i>*may exclude sale items</i></p>
<b>Complimentary Amenities</b>	<p>Self-service tea and coffee in Vardons</p> <p>Access to golf at other participating UK Marriott Hotel <i>*subject to terms and conditions and availability. It is recommended that members present their membership card on each occasion, as the discount for food and drinks is determined on a hotel-by-hotel basis and not guaranteed</i></p>
<b>Guest Access Rates</b>	<p>Golf Club <i>*max. 3 guests per visit with 6 visits/year</i></p> <ul style="list-style-type: none"> <li>Weekdays £30/35   Weekends £45</li> </ul> <p>Leisure Club <i>*max. 3 guests per visit with 6 visits/year per guest. Not applicable to trial members</i></p> <ul style="list-style-type: none"> <li>Adult ages 16+ £25 Monday to Sunday, £15 after 6 p.m, Students ages 16-23 £15.</li> <li>Children (ages 7-15) £7.50 Monday to Sunday</li> </ul>
<b>Hotel Stays</b>	<p>20% discount for all UK Golf and Leisure Members accommodation across the United Kingdom. Includes breakfast and wireless Internet. See full rate details at time of booking</p> <ul style="list-style-type: none"> <li>Visit <a href="https://www.marriott.com">Marriott.com</a> and use code GL1 in 'Corporate/Promotional' under 'Special Rates' to book. <i>*Subject to availability. Proof of eligibility with valid membership card required upon check-in</i></li> </ul> <p>Exclusive rate for stays at Hanbury Manor Marriott Hotel &amp; Country Club</p> <ul style="list-style-type: none"> <li>Room only £109   Bed and Breakfast £121/£136, Members Friends &amp; Family £149/£164 Bed &amp; Breakfast</li> <li>Visit <a href="#">our website</a> and use code D3Q in 'Corporate/Promotional' under 'Special Rates' to book. <i>*Subject to availability. Rates quoted on single/double room occupancy, subject to availability and standard Marriott booking terms. Maximum room restrictions per night apply and proof of eligibility with valid membership card required upon check-in</i></li> </ul>
<b>Hotel Dining</b>	<p>Cast Iron Grill Buffet Breakfast £8, no other discount applies</p> <p>£8 per person for up to 3 guests per member</p> <p>Saturday, Sunday and Bank Holidays</p> <ul style="list-style-type: none"> <li>Members must clear the table by 9 a.m. for this benefit to apply. Any seated members and guests after 9 a.m. will be charged full price (minus 20% F&amp;B discount)</li> </ul> <p>Advanced booking highly recommended week-round  <i>*walk-in services subject to availability</i></p>

## Terms and conditions

A valid membership card must be presented upon each visit and/or transaction. The 20% discount does not apply to sale items, promotional discounts or offers, day spa packages, guest fees and personal training and gift vouchers. A valid subscription member must sign-in guests, in person. Children, juniors, and trial members are not eligible to sign-in guests. All guest entries are subject to availability. In line with the debenture and playing guideline agreements, member benefits are subject to change and may be changed or withdrawn at any time.

For more information, please contact Michell Birchall, Membership Executive.

[michell.birchall@marriott.com](mailto:michell.birchall@marriott.com) | +44 (0)1920 885 015

Hanbury Manor Marriott Hotel & Country Club

+44 (0)1920 487 722

Ware, Hertfordshire, SG12 0SD

[Visit Hotel Website](#)



HANBURY MANOR  
MARRIOTT HOTEL & COUNTRY CLUB