

MARRIOTT LEADERSHIP.

WELCOME TO CHICAGO'S NEW MEETING POWERHOUSE.

Take your innovators into Chicago's South Loop for a contemporary meeting experience unlike any other. Marriott Marquis Chicago brings you new leadership in The Collection at McCormick Square and new ways to enhance how you come together. Get the latest in meeting technology and sensible planning from our experts that blends the best of aesthetics and functionality. Bring your group to the Windy City and find impactful experiences for every agenda.

[LEARN MORE](#)

MARRIOTT MARQUIS CHICAGO

2121 South Prairie Avenue Chicago, IL 60616
T 312.824.0500 MarriottMarquisChicago.com



© 2017 Marriott International, Inc.



MARRIOTT MARQUIS
CHICAGO



MARQUIS ACCESS.

CHICAGO INNOVATION AROUND EVERY CORNER.

Uncover the epicenter of Chicago's South Loop sophistication. Get easy access to all of Chicago via the Green Line "L" train, and find plenty of shopping, dining and entertainment just steps from our doors! Here are a few local landmarks to visit during your stay.

- Soldier Field (.5 mile)
- Chinatown (1 mile)
- Museum Campus (1.5 miles)
- Northerly Island Park (2 miles)
- The Art Institute of Chicago (2 miles)
- Chicago Cultural Center (2.5 miles)
- Navy Pier (3.5 miles)
- Frank Lloyd Wright's Robie House (7 miles)

[LEARN MORE](#)

MARRIOTT MARQUIS CHICAGO

2121 South Prairie Avenue Chicago, IL 60616
T 312.824.0500 MarriottMarquisChicago.com



© 2017 Marriott International, Inc.



MARQUIS RELAXATION.

WHERE CHICAGO'S BIGGEST SHOULDERS SPEND THE NIGHT.

Redesigned for the modern business traveler, our guest rooms offer a relaxing escape after a day of business, and a comfortable setting for staying productive between meetings. All new amenities bring your guests the latest in connectivity, and our fiber optic internet capabilities give guests the freedom to surf, stream and search faster than ever before. All this with luxurious bedding and epic views of Chicago's iconic skyline.



MARRIOTT MARQUIS CHICAGO

2121 South Prairie Avenue Chicago, IL 60616
T 312.824.0500 MarriottMarquisChicago.com



© 2017 Marriott International, Inc.





MARQUIS GOURMET.

GATHER YOUR TASTEBUDS AROUND OUR TABLE.

When you meet at Marriott Marquis Chicago, you get more than proximity to some of the world's best chefs, you also get three masterful culinary experiences on site. Whether you're craving an inventive sit-down dinner of local Chicago favorites or quick bite on the go, our on-site dining outlets Woven + Bound and 2121 Pantry feature delightful ways to satisfy every taste. Or treat yourself to even more options with M Club Lounge access—with flexible workspaces, cozy furnishings, snacks, food and drinks at your disposal, you might just find your new favorite remote office.

[LEARN MORE](#)

MARRIOTT MARQUIS CHICAGO

2121 South Prairie Avenue Chicago, IL 60616
T 312.824.0500 MarriottMarquisChicago.com



© 2017 Marriott International, Inc.



MARQUIS SUCCESS.

WHERE ANTICIPATING YOUR EVERY NEED COMES STANDARD.

Our convention hotel empowers your group to dream big with 62 meeting and event rooms with a total of 93,000 square feet of flexible space. Free your attendees' minds with stunning views of Chicago from our ballrooms' floor-to-ceiling windows, and free up more time to ideate, strategize and more with incredibly fast fiber optic WiFi capabilities in every meeting space. And when it comes to A/V connectivity, we'll do more than provide you with the latest in meeting technology—our meeting service professionals will make sure everything you need is set and ready for your meeting.



MARRIOTT MARQUIS CHICAGO

2121 South Prairie Avenue Chicago, IL 60616
T 312.824.0500 MarriottMarquisChicago.com



© 2017 Marriott International, Inc.

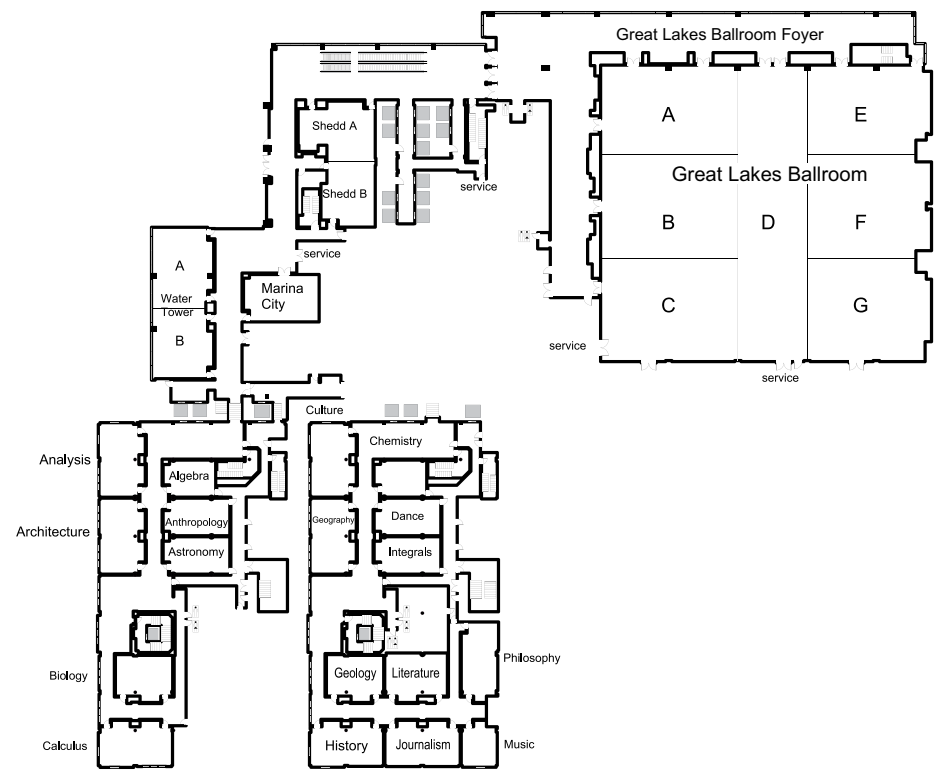


MARRIOTT MARQUIS
CHICAGO

LEVEL 2

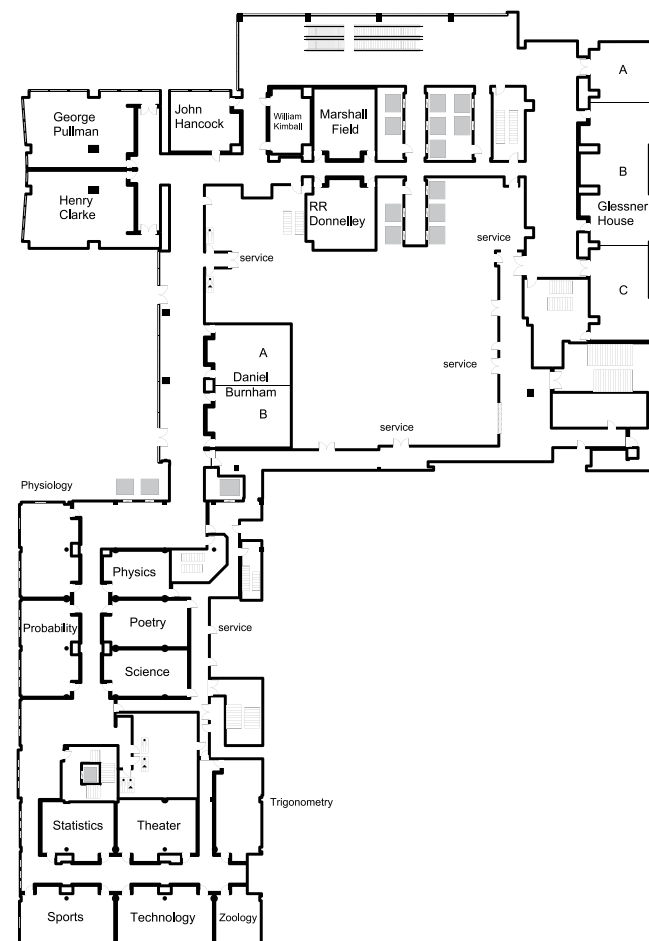
Meeting Room	DIMENSIONS		CAPACITY					
	Dimensions (LxWxH)	Area (Sq. Feet)	Theater	Schoolroom	Conference	U-Shape	Reception	Banquet
Shedd	39x61x10	1,940	168	110	48	52	150	100
Shedd A	39x30x10	1,070	72	40	24	26	75	50
Shedd B	27x31x10	870	72	50	24	26	75	50
Marina City	35x24x10	894	88	54	20	24	90	60
Water Tower	76x31x10	2,304	196	122	60	60	180	120
Water Tower A	41x31x10	1,255	110	66	30	34	90	60
Water Tower B	34x31x10	1,041	82	46	24	28	90	60
Great Lakes Ballroom	168x149x24	24,997	2,145	1,420	—	—	2,100	1,390
Great Lakes A	45x63x24	2,790	182	132	—	—	180	120
Great Lakes B	52x63x24	3,291	260	180	—	—	240	160
Great Lakes C	51x63x24	3,205	260	180	—	—	240	160
Great Lakes D	149x34x24	5,192	429	312	—	—	400	240
Great Lakes E	45x69x24	3,120	240	144	—	—	225	150
Great Lakes F	52x69x24	3,620	320	216	—	—	300	200
Great Lakes G	51x69x24	3,620	320	216	—	—	300	200
Great Lakes A/B	97x63x24	6,081	442	312	—	—	420	280
Great Lakes B/C	104x63x24	6,497	520	360	—	—	480	320
Great Lakes E/F	97x69x24	6,739	560	360	—	—	525	350
Great Lakes F/G	104x69x24	7,240	640	432	—	—	600	400
Great Lakes A/B/C	168x63x24	9,286	702	492	—	—	660	440
Great Lakes E/F/G	168x69x24	10,360	880	576	—	—	825	550
Great Lakes A/B/C/D	168x98x24	14,478	1,131	804	—	—	1,060	680
Great Lakes D/E/F/G	168x104x24	15,551	1,309	888	—	—	1,225	790
Great Lakes Foyer	—	7,897	—	—	—	—	900	—
Algebra	26x18x9	474	—	—	12	—	—	—
Analysis	37x23x9	837	66	42	26	30	75	50
Anthropology	33x19x9	615	61	35	20	23	45	30
Architecture	38x23x9	885	74	42	28	31	75	50
Astronomy	33x18x9	612	69	35	24	27	60	40
Biology	29x23x9	640	69	39	18	21	45	30
Calculus	37x23x9	832	90	52	26	29	75	50
Chemistry	26x18x9	474	—	—	12	—	—	—
Culture	23x37x9	837	80	47	26	28	75	50
Dance	33x19x9	615	63	34	24	25	45	30

Geography	23x36x9	845	90	47	28	30	75	50
Geology	33x18x9	612	56	34	22	24	45	30
Integrals	21x29x9	640	76	31	18	21	45	30
History	23x37x9	729	98	53	26	29	75	50
Literature	21x31x9	729	78	38	20	24	45	30
Journalism	23x38x9	838	97	54	26	29	75	50
Philosophy	40x18x9	716	68	40	28	26	60	40
Music	23x18x9	400	—	—	12	—	—	—



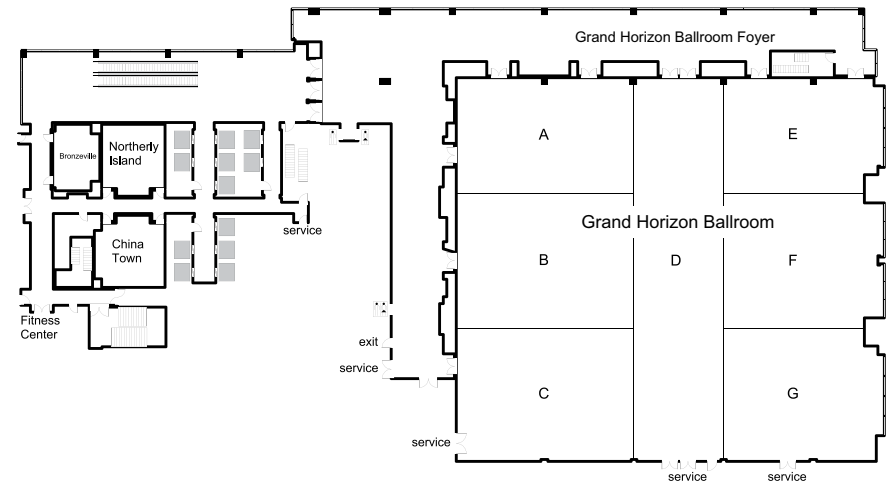
LEVEL 3

Meeting Room	DIMENSIONS		CAPACITY					
	Dimensions (L×W×H)	Area (Sq. Feet)	Theater	Schoolroom	Conference	U-Shape	Reception	Banquet
Glessner House	117×29×10	3,285	349	201	102	—	300	170
Glessner House A	23×29×10	649	62	38	18	—	60	40
Glessner House B	58×29×10	1,549	142	75	42	39	90	60
Glessner House C	40×29×10	1,195	97	50	30	23	75	50
Glessner House A/B	140×29×10	2,198	204	113	60	51	150	100
Glessner House B/C	99×29×10	2,744	239	125	72	56	165	110
RR Donnelley	28×24×10	662	51	28	18	21	60	40
Marshall Field	27×27×10	714	49	32	18	22	60	40
William Kimball	26×16×10	348	—	—	12	—	—	—
John Hancock	27×24×10	635	45	24	16	20	60	40
George Pullman	43×31×10	1,364	108	67	32	38	120	80
Henry Clarke	43×31×10	1,355	108	67	32	38	120	80
Daniel Burnham	49×33×10	1,563	170	108	38	44	150	100
Daniel Burnham A	25×33×10	820	91	48	22	23	75	50
Daniel Burnham B	23×33×10	734	66	36	22	23	60	40
Physics	26×18×9	473	—	—	12	—	—	—
Physiology	37×23×9	836	80	47	26	28	75	50
Poetry	33×19×9	615	63	34	24	25	45	30
Probability	38×23×9	846	90	47	28	30	75	50
Science	33×18×9	612	56	34	22	24	45	30
Statistics	29×21×9	640	76	31	18	21	45	30
Sports	37×23×9	831	98	53	26	29	75	50
Theater	31×25×9	729	78	38	20	24	45	30
Technology	38×23×9	838	97	54	26	29	75	50
Trigonometry	38×18×9	715	68	40	28	26	60	40
Zoology	23×18×9	401	—	—	12	—	—	—



LEVEL 4

Meeting Room	DIMENSIONS		CAPACITY					
	Dimensions (L×W×H)	Area (Sq. Feet)	Theater	Schoolroom	Conference	U-Shape	Reception	Banquet
Grand Horizon Ballroom	168×149×29	24,963	2,145	1,420	—	—	2,100	1,390
Grand Horizon A	45×63×29	2,788	182	132	—	—	180	120
Grand Horizon B	52×63×29	3,221	260	180	—	—	240	160
Grand Horizon C	52×63×29	3,221	260	180	—	—	240	160
Grand Horizon D	149×34×29	5,191	429	312	—	—	400	240
Grand Horizon E	45×69×29	3,124	240	144	—	—	225	150
Grand Horizon F	52×69×29	3,621	320	216	—	—	300	200
Grand Horizon G	52×69×29	3,626	320	216	—	—	300	200
Grand Horizon A/B	97×63×29	6,009	442	312	—	—	420	280
Grand Horizon B/C	104×63×29	6,442	520	360	—	—	480	320
Grand Horizon E/F	97×69×29	6,745	560	360	—	—	525	350
Grand Horizon F/G	104×69×29	7,247	640	432	—	—	600	400
Grand Horizon A/B/C	168×63×29	9,230	702	492	—	—	660	440
Grand Horizon E/F/G	168×69×29	10,371	880	576	—	—	825	550
Grand Horizon A/B/C/D	168×98×29	14,421	1,131	804	—	—	1,060	680
Grand Horizon D/E/F/G	168×104×29	15,562	1,309	888	—	—	1,225	790
Grand Horizon Foyer	—	8,095	—	—	—	—	900	—
Northerly Island	28×24×10	662	51	28	18	21	60	40
Bronzeville	26×16×10	393	—	—	12	—	—	—
China Town	27×24×10	701	49	32	18	22	60	40



MARQUIS MOTION.

PROPELLING YOU TOWARDS A SUCCESSFUL MEETING.

BY CAR

Directions from O'Hare:

- Take the Interstate 190 ramp to Interstate 90/Interstate 294/Chicago.
- Merge onto I-190 E.
- Merge onto I-90 E.
- Take exit 53 to merge onto I-55 N.
- Take exit 293D toward Martin L King Dr.
- Keep right, follow signs for Martin L King Dr/McCormick Pl
- Merge onto E 25th St.
- Slight left to stay on E 25th St.
- Slight left onto S King Dr/S Martin Luther King Dr becomes E Cermak Rd.
- Turn right onto S Prairie Ave.

Directions from Midway:

- Head north on IL-50 N/S Cicero Ave.
- Turn right onto the Interstate 55 N/ Stevenson Expy ramp to Chicago.
- Take exit 293D from I-55N/Stevenson Expy.
- Take exit 293D toward Martin L King Dr.
- Keep right, follow signs for Martin Luther King Dr/McCormick Pl
- Merge onto E 25th St.
- Slight left to stay on E 25th St.
- Slight left onto S King Dr/S Martin Luther King Dr.
- Turn slightly left and road becomes E Cermak Rd.
- Turn right onto S Prairie Ave.

BY RAIL

Directions from O'Hare:

- Board the CTA Blue Line "L" train at the station located in O'Hare.
- Take the "L" to Clark/Lake station and transfer to a Green Line "L" train towards Ashland/63rd.
- Get off the train at Cermak/McCormick Place and walk East down Cermak.
- Turn left onto Prairie Ave.

Directions from Midway:

- Board the CTA Orange Line "L" train at the station located inside Midway.
- Take the "L" to the Roosevelt station and transfer to a Green Line "L" train towards Ashland/63rd.
- Get off the train at Cermak/McCormick Place and walk East down Cermak.
- Turn left onto Prairie Ave.



MORE INFORMATION

MARRIOTT MARQUIS CHICAGO

2121 South Prairie Avenue Chicago, IL 60616
T 312.824.0500 MarriottMarquisChicago.com



© 2017 Marriott International, Inc.



MARQUIS INSIGHT.

SCHEDULE YOUR TOUR OF CHICAGO'S NEWEST ICON.

Experience sophistication in motion when you schedule your tour of our hotel. Get a deeper understanding of our intuitive meeting process and see where world-changing ideas are born as we guide you through our halls. You'll also learn more about our South Loop location and the details that make Marriott Marquis Chicago a landmark for Windy City architecture.

GET A PREVIEW OF YOUR TOUR HERE AT THE FOLLOWING LINKS:

- [LEARN MORE](#)
- [SEE US ON YOUTUBE](#)
- [VIEW OUR HOTEL OVERVIEW](#)



MARRIOTT MARQUIS CHICAGO

2121 South Prairie Avenue Chicago, IL 60616
T 312.824.0500 MarriottMarquisChicago.com



© 2017 Marriott International, Inc.



MARQUIS NETWORKING.

**NORTH AMERICA'S LARGEST CONVENTION CENTER.
ONE POINT OF CONTACT.**

Planning an unforgettable event at McCormick Place has never been more simple. Get the power of The Collection at McCormick Square with one contact and discover a new way to meet in Chicago's grandest establishment on your terms.

[LEARN MORE](#)

MARRIOTT MARQUIS CHICAGO

2121 South Prairie Avenue Chicago, IL 60616
T 312.824.0500 MarriottMarquisChicago.com



© 2017 Marriott International, Inc.



MCCORMICK SQUARE



MARRIOTT MARQUIS
CHICAGO