



ALL THE RIGHT SERVICES
IN ALL THE RIGHT SPACES.

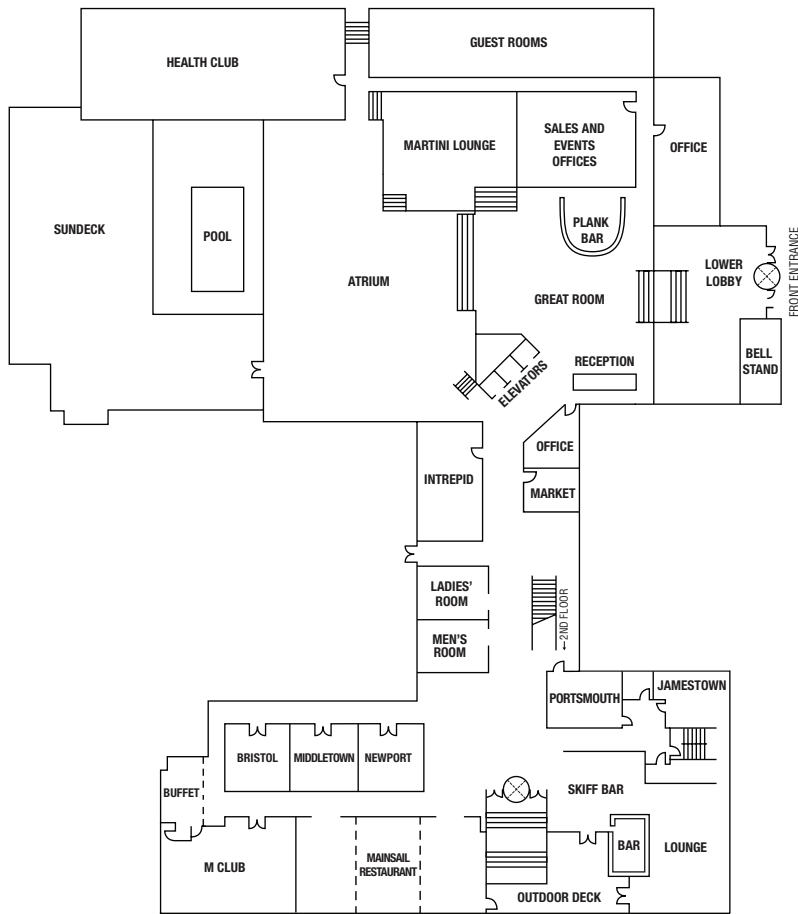


A SPECTACULAR VENUE FOR INSPIRING EVENTS.

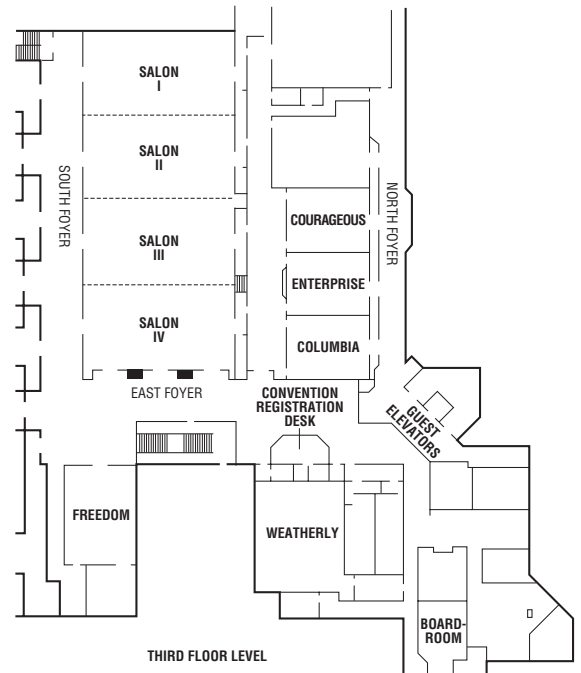
We've invested over \$35 million in reimagining our spaces and services so that we may create exceptional experiences for your group. Our more than 24,000 square feet of meeting space can accommodate a range of events, from a large reception in the Grand Ballroom to an intimate meeting in our boardroom.

Your group will appreciate the endless activities just steps from our door. Walk the Walk: Newport's million-dollar mansions of the Gilded Age will amaze you. See the Light: Sail past the picturesque lighthouses on a boat tour of Narragansett Bay. Drink in the View: Relax at our outdoor terrace bar with a handcrafted cocktail. Slow It Down: Unwind in our luxurious Spa. Just let us know, we can arrange it all for you.





SECOND FLOOR LEVEL



THIRD FLOOR LEVEL

MEETING ROOM	WxLxH	SQ. FT.	THEATER	SCHOOLROOM	CONFERENCE	U-SHAPE	RECEPTION	BANQUET
Grand Ballroom	61x126x12	7,686	840	520	-	-	1,100	550
Salons I, II, III or IV	32x61x12	1,952	200	100	-	-	250	150
Salons I & II or III & IV	64x60x12	3,840	420	224	-	-	500	300
Boardroom	28x18x8	504	-	-	12	-	-	-
Columbia	28x23x8	644	65	35	25	25	50	50
Courageous	29x22x8	638	65	35	25	25	50	50
Enterprise	28x22x8	616	65	35	25	25	50	50
Freedom	39x29x10	1,131	100	60	35	40	60	80
Weatherly	41x27x8	1,107	100	60	35	40	75	80
Atrium	81x109x50	8,829	-	-	-	-	800	400
Bristol	19x24x10	456	50	24	18	18	40	40
Intrepid	27x21x8	567	50	35	22	22	40	40
Jamestown	20x21x10	420	30	18	12	12	30	20
Middletown	19x24x10	456	50	24	18	18	40	40
Newport	19x25x10	475	50	24	18	18	40	40
Portsmouth	21x28x10	588	50	35	20	20	40	40

ACCOMMODATIONS

7 floors • 320 luxurious guest rooms • 8 suites
• Handicapped accessible rooms • Check-in: 4pm
• Check-out: 11am • Mobile check-in/check-out
and guest services • Video bill review/check-out
• Smoke-free hotel • 55" HDTVs • Netflix
• Wireless high speed Internet access
• In-room safe • Mini-refrigerator

RESTAURANTS AND LOUNGES

MainSail restaurant featuring a contemporary
American menu of local New England flavors
from the freshest ingredients • Open for
breakfast, lunch and dinner • Skiff Bar and
seasonal outdoor terrace serving specialty
cocktails, craft and local brews, delicious
appetizers and a spectacular harbor view
• Open for lunch and dinner • Plank day/night
bar serving breakfast items to-go and cocktails,
wines, beer and small bites in the evening

RECREATION AND LEISURE

The Spa at Newport Marriott featuring massage
services, facials, hair care, make-up consultation
and nail care • Studio Fit featuring Fitness on
Demand classes • Free weights, TRX, Medicine
Balls, Kettleballs and more • State-of-the-art
cardiovascular equipment • Indoor pool and
whirlpool • Sauna • Racquetball court • Sun deck
• Jogging (nearby) • Golf (nearby) • Tennis (nearby)
• Beach (nearby) • Sailing (nearby)

ATTRACTIONS

Newport Mansions • International Tennis Hall
of Fame • Cliff Walk • Fort Adams State Park
• Museum of Newport History • Newport Art
Museum • Museum of Yachting • Brick Market
Place • Thames Street shopping, restaurants
and nightlife • Green Animals Topiary Garden
• Norman Bird Sanctuary • Touro Synagogue
• Naval War College Museum • Scenic Harbor
Tours • Sailing on 12-meter boats

GUEST SERVICES

Concierge Services • 24 Hour Business Center
• Valet and on-site laundry • Market • M Club
Lounge (seasonal) • Valet parking • Commercial
airport transportation to Logan Airport in
Boston and T.F. Green Airport in Providence

MEETING FACILITIES

16 Meeting rooms • 24,117 sq.ft. of event space
• 7,686 sq. ft. Grand Ballroom divisible into 4
sections • Grand Ballroom accommodates up
to 840 for meetings and 550 for banquets • 4,650
sq. ft. Atrium seats 400 for banquets • Outdoor
terrace available for seasonal events • Wireless
high-speed Internet access • Dedicated event
professionals to handle all of your meeting and
special events needs • A selection of creative
custom menu options • Red Coat Direct App for
real-time access to event team to make requests
without ever leaving the room



NEWPORT MARRIOTT

25 AMERICA'S CUP AVENUE, NEWPORT, RI 02840
401.849.1000 | FAX 401.849.6755 | NEWPORTMARRIOTT.COM

