

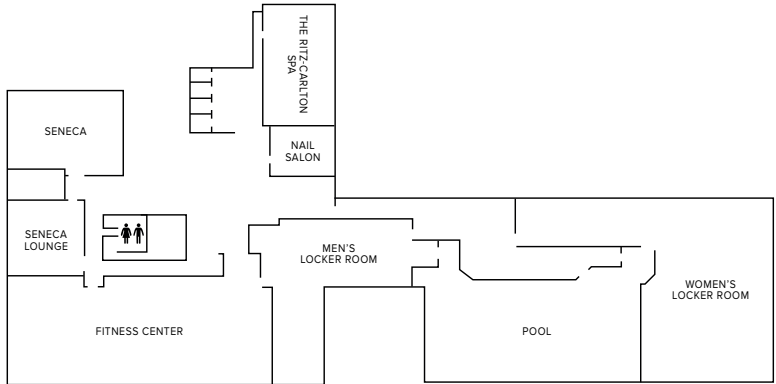
VENUE SPACES LEVEL ELEVEN

SENECA, SENECA LOUNGE

ROOM DETAILS

Offering floor-to-ceiling windows overlooking Seneca Park, the private setting boasts of natural light and classic touches.

FLOOR PLAN



CAPACITY CHART

<i>Room Summary</i>	Seneca	Seneca Lounge
Size (sq ft)	1,008	644
Dimensions (ft)	36 x 28	28 x 23
Chandelier Height (ft)	8	9
<i>Seating Capacities</i>		
Reception	60	60
Banquet Rounds of 10	50	40
Theater	60	30
Conference	24	15
Classroom	36	12
U-Shape	30	–



THE RITZ-CARLTON

CHICAGO

160 EAST PEARSON STREET, CHICAGO, IL 60611
PH 312.266.1000 RITZCARLTON.COM/CHICAGO