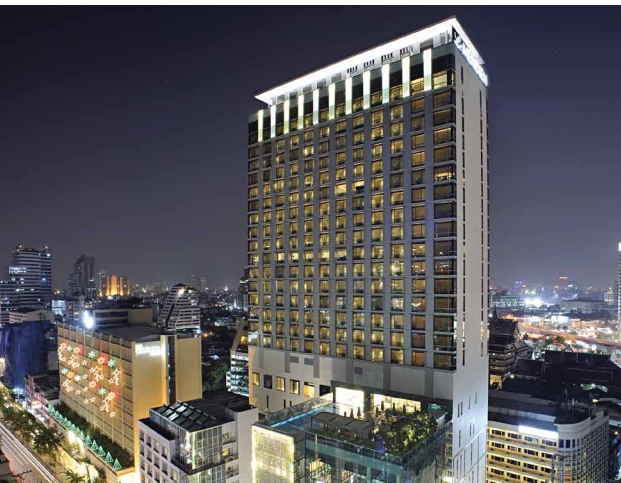


# LE MERIDIEN BANGKOK

Le MERIDIEN

BE EXPOSED TO THE UNCOMMON,  
ENCOUNTER THE UNEXPECTED  
AND IGNITE INSPIRATION.  
DISCOVER YOUR DESTINATION  
WITH AUTHENTIC AND THOUGHT-  
PROVOKING EXPERIENCES AT  
EVERY TURN.

N 13° 43' E 100° 31'  
DESTINATION UNLOCKED

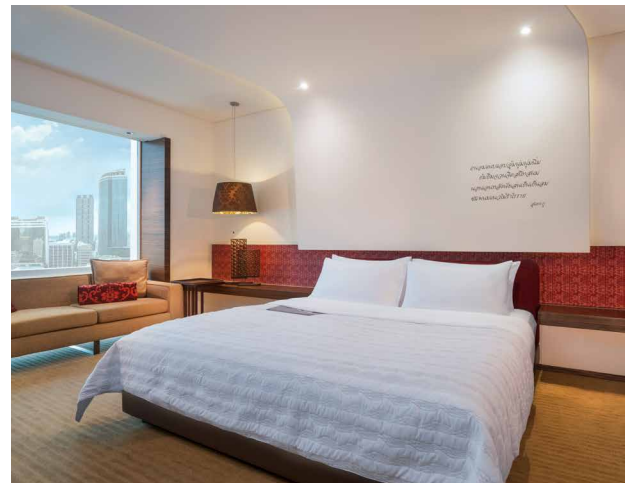


## NEW HEIGHTS OF INSPIRATION

Le Méridien Bangkok reaches 24 storeys into the City of Angel's skyline, towering in contemporary sophistication at the heart of the pulsating Silom commercial district and just metres from the energetic Patpong Night Market.

Each of the hotel's 282 subtle yet modern guestrooms and suites captures the colourful views unfolding below through floor-to-ceiling windows. An innovative restaurant, a bar and a stylish lounge entice guests with menus introducing stimulating cuisine, creative cocktails and an international range of coffee blends.

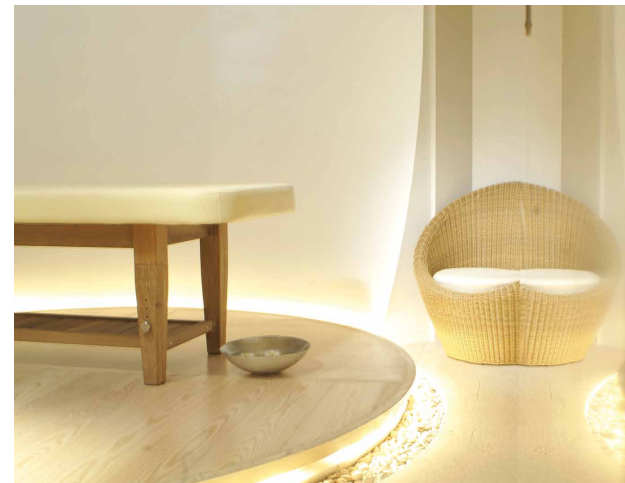
For business events, Le Méridien Bangkok offers three stylish meeting rooms, two boardrooms and a private foyer, perfect for intimate corporate and social functions for up to 350 guests. For relaxation, discover a unique lifestyle experience on the hotel's sixth floor, entirely dedicated to the Spa inspired by the rich tradition of European spa, Technogym-equipped fitness centre and an outdoor pool to chill out with cool drinks and cocktails.



## STIMULATING GUESTROOMS

Merging chic, contemporary design with modern comforts, our rooms create a sophisticated retreat. Explore a view of Bangkok's cityscape and its vibrant street scene below, punctuated by the energetic Patpong Night Market and peaceful Hua Lampong Temple through floor-to-ceiling size windows from your room. All rooms offer at least 36 sqm of space with an exceptional open bathroom concept.

Our signature Le Méridien Bed further ensure a comfortable stay. Unlock our standard amenities and explore our inspiring living area with a productive work desk, High Speed Internet Access, a connectivity panel that connects your devices to the LED TV, and a coffee maker and complimentary water to keep you revitalised day and night.



## IN THE CENTRE OF IT ALL

Situated between the city's tree-shaded Lumpini Park and the Chao Phraya River, Le Méridien Bangkok is just a short walk from shopping and dining on Silom Road and the excitement of the Patpong Night Market. Jim Thompson House + Museum, Siam Paragon Shopping Centre, Hua Lamphong Temple and Chinatown are just a short ride away by subway or Skytrain.

### LE MERIDIEN BANGKOK

40/5 Surawong Road  
Bangkok 10500 Thailand  
T +66 2232 8888  
F +66 2232 8999  
lemeridienbangkoksurawong.com

## DISCOVERY AWAITS

### CONVENIENT ACCESS

Suvarnabhumi  
International Airport:  
45 km / 55 minutes  
Don Muang Airport:  
40 km / 45 minutes

- 01 Hua Lamphong Temple
- 02 MBK
- 03 Siam Paragon Shopping Center
- 04 Jim Thompson's House + Museum
- 05 Patpong Night Market - Thaniya Street
- 06 TCDC - Thailand Creative and Design Center

