

AC HOTEL BELLA SKY COPENHAGEN

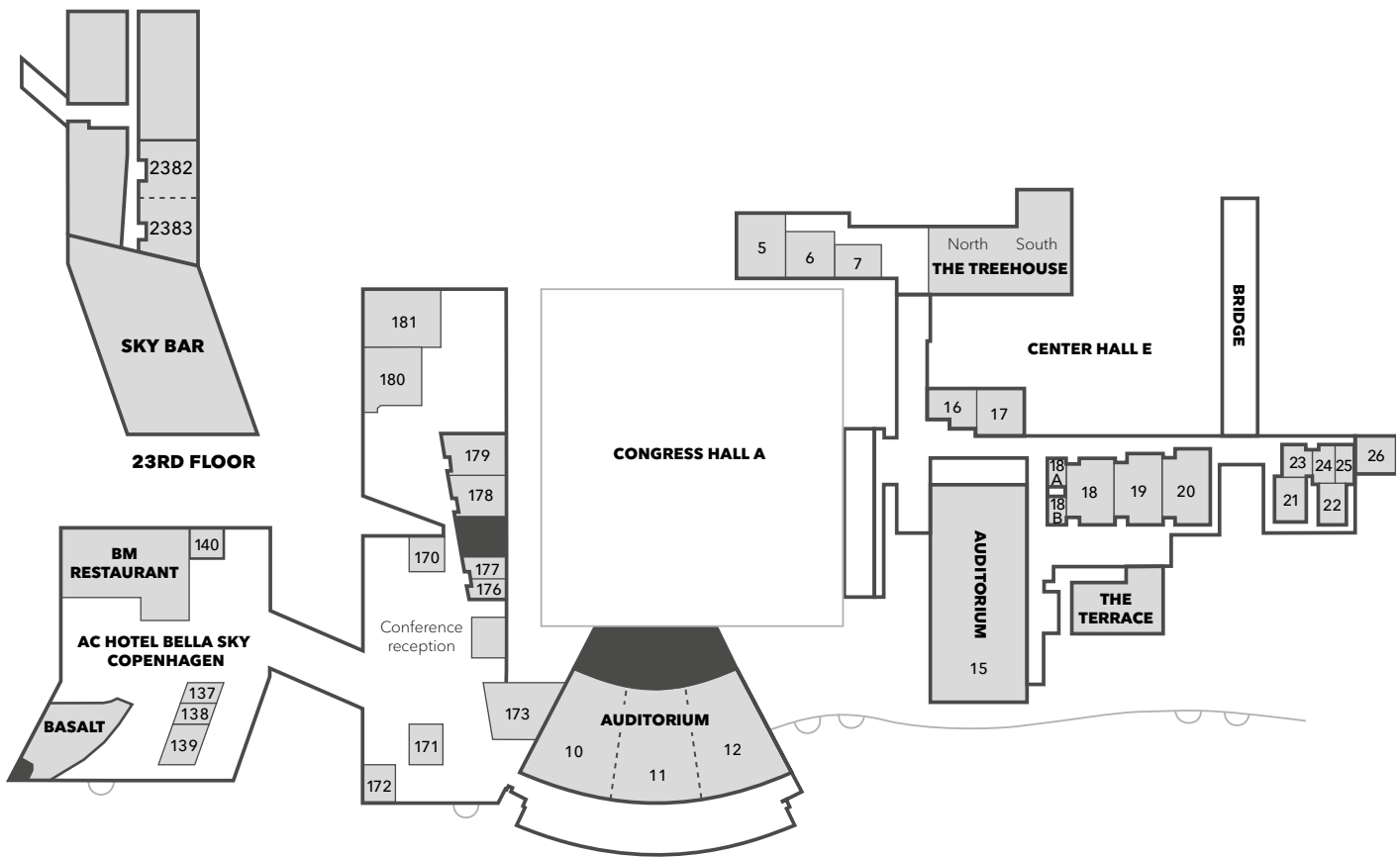
FLOOR PLAN & CAPACITY CHART



MEETING FACILITIES 1ST FLOOR

LOCATION		CAPACITY Incl. 4 in panel	DIMENSIONS & SIZE		SET-UP							
Loc.	No.	Max	L/W/H	m ²	Theatre	Classroom	U-shape	Square	Boardroom	Banquet Ø150/180	Cabaret Ø150/180	Restaurant
BCC	5	93	12/9/2.7	108	93	50	34	44		64	48	
BCC	6	65	9/9/2.7	81	65	30	24	32		48	36	
BCC	05-06	166	-/-2.7	189	166	98		54		128	96	
BCC	7	39	9/6/2.7	65	39	20	18	24		32	30	
BCC	06-07	124	-/-2.7	146	124	62		46		88	72	
BCC	05-07	232	-/-2.7	254	232	124				168	138	
BCC	16	46	8.9/6.1/2.9	54	46	32	22	28		40	24	
BCC	17	46	9/9/2.9	81	46	46	26	36		48	36	
BCC	18A	8*	5/3.5/2.9	18					8			
BCC	18B	8*	5/3.5/2.9	18					8			
BCC	18	97	12/9/3.6	108	97	54	28	36		64	48	
BCC	19	119	13/9/3.6	117	119	56	34	40		64	48	
BCC	18-19	194	13/18/3.6	234	194	100	48	60		136	108	
BCC	20	126	14/9/3.7	126	126	66	34	40		64	48	
BCC	21	18	8.5/5.8/3.3	49					18			
BCC	22	14*	7/5/3.1	35					14			
BCC	23	12	5.5/5.2/2.5-2.9	25					12			
BCC	24	10*	7/4/2.5-2.9	28					10			
BCC	25	10*	7/4/2.7	28					10			
T1	137	9*	5.3/3.7/4.2	20					9			
T1	138	13*	5.3/3.7/4.2	20					13			
T1	137-138	13	5.6/7.5/4.2	42	(30)				13			
T1	139	13*	5.6/7.5/4.2	32					13			
T1	140 VIP	13*	5.8/6.4/4.2	37					13			
T2	170	8*	5.8/4.7/3.7	25					8			
T2	171 VIP	13*	5.8/7.3/3.7	42					13			
T2	172 VIP	13*	5.8/6.4/4.2	37					13			
T2	173	98	9/10.4/3.7	94	98	48	28			72	64	
T2	176	9*	6.7/3.7/3.7	23					9			
T2	177	9*	5.7/3.8/3.7	21					9			
T2	176-177	18	5.7/7.5/3.7	50	(38)		14		18			
T2	178	57	8.3/7.5/3.7	62	57	24	18		16	40	30	
T2	179	55	9.3/7.5/3.7	70	55	24	18		16	40	30	
T2	180 Ballroom	91	10.8/10.7/3.7	117	91	48	26			54	56	
T2	181 Ballroom	120	10.7/14.6/3.7	158	120	60	38			72	80	
T2	180-181 Ball.	250	14.6/21.6/3.7	325	288	160	62			198	160	

*excl. panel
(non standard set-up)



MEETING FACILITIES 23RD FLOOR

	LOCATION	CAPACITY	DIMENSIONS & SIZE		SET-UP
	Loc.	Max	L/W/H	m ²	Boardroom
T2	2382	12	7.3/5.8/7.2	42	12
T2	2383	12	5.8/5.8/7.2	34	12
T2	2382-2382	28	13/6/7.2	78	28

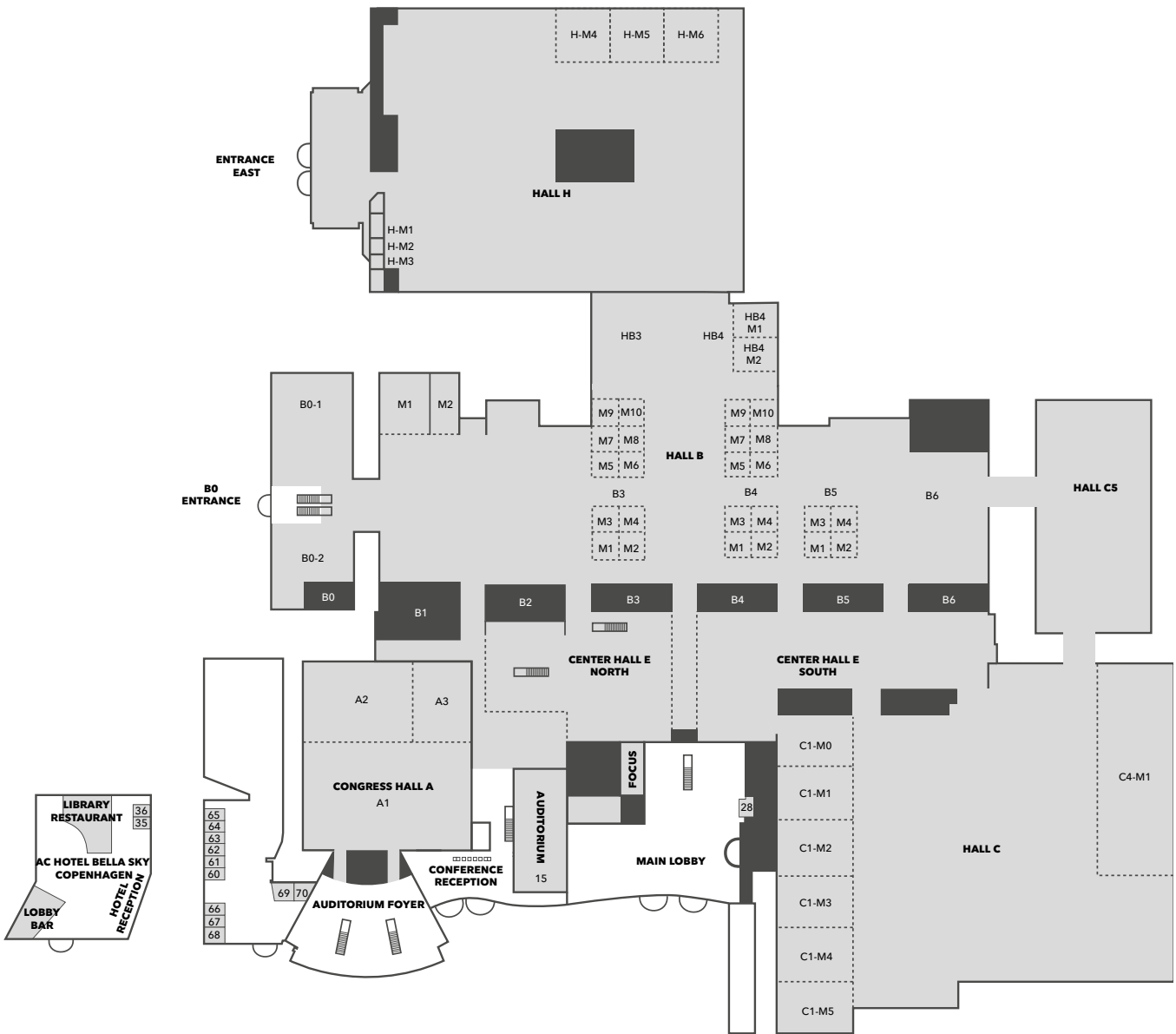
RESTAURANTS

Loc.	Floor	Hall	Name	Function	Capacity (seated)*
T1	Ground	Lobby	Lobby Bar	Restaurant/Bar	61
T1	Ground		Library Restaurant	Restaurant/Bar	60
T1	1st		BASALT	Restaurant/Bar	100
T1	1st		BM Restaurant	Restaurant	240
T2	23rd		Sky Bar	Restaurant/Bar	40/88
BCC	Ground	Center Hall	The Gastro	Restaurant	138
BCC	Ground	C1	Orangu Lounge	Café	109
BCC	Ground	HB3/4	Café Torvet	Restaurant	120
BCC	1 st		The Treehouse	Restaurant	234
BCC	1 st		The Treehouse North	Restaurant	124
BCC	1 st		The Treehouse South	Restaurant	114

AUDITORIUMS 1ST FLOOR

	LOCATION	CAPACITY	DIMENSIONS & SIZE		SET-UP	
	Loc.	No.	Max	L/W/H	m ²	Theatre
BCC	10	10	310	26/10-18/7.7	395	310
BCC	11	11	310	26/10-18/7.7	395	310
BCC	12	12	310	26/10-18/7.7	395	310
BCC	10-11	10-11	620	26/10-36/7.7	790	620
BCC	11-12	11-12	620	26/10-36/7.7	790	620
BCC	10-12	10-12	930	26/10-54/7.7	1,185	930
BCC	15-1	15-1	362	40/18/9.5	720	1-362
BCC	15-2	15-2	582	40/18/9.5	720	363-582

*Based on standard set up.



MEETING FACILITIES GROUND FLOOR

LOCATION		CAPACITY	DIMENSIONS & SIZE		SET-UP			
Loc.	No.	Max	L/W/H	m ²	Theatre	Classroom	U-shape	Boardroom
T1	35	9	5/3.7/4.2	19				9
T1	36	9	5/3.7/4.2	19				9
T1	35-36	10	5/7.5/4.2	38	(38)		10	10
T2	60	9	5/3.7/4.2	19				9
T2	61	9	5/3.7/4.2	19				9
T2	60-61	10	5/7.5/4.2	38	(38)	8	10	10
T2	62	9	5/3.7/4.2	19				9
T2	63	9	5/3.7/4.2	19				9
T2	62-63	10	5/7.5/4.2	37	(38)	8	10	10
T2	64	9	5/3.7/4.2	19				9
T2	65	9	5/3.7/4.2	18				9
T2	64-65	10	5/7.5/4.2	37	(38)	8	10	10
T2	66	9	5/3.7/4.2	19				9
T2	67	9	5/3.7/4.2	19				9
T2	66-67	10	5/7.5/4.2	37	(38)	8	10	10
T2	68 VIP	6	5/2.9/4.2	15				6
T2	69	14	5/5.4/4.2	26	(27)		14	8
T2	70	12	5/5.1/4.2	26	(22)		12	8
T2	69-70	42	10/5.1/4.2	51	42	22	18	14
BCC	28	8	4.1/2.7/2.5	11				8

(non standard set-up)

MEETING FACILITIES GROUND FLOOR

LOCATION		CAPACITY	DIMENSIONS & SIZE		SET-UP				
Loc.	No.	Max	L/W/H	m ²	Theatre	Classroom	Banquet	Cabaret	U - Shape
CONGRESS HALL A									
BCC	A1	2,295	56/36/2.5-9	2,000	2,295	1,035	1,088	840	
BCC	A2	1,146	37/27/2.5-9	1,000	1,146	420	800	408	
BCC	A3	560	19/27/2.5-9	500	560	180	360	234	
BCC	A2-A3	1,762	56/27/2.5-9	1,500	1,762	762	832	648	
BCC	A1-A3	4,326	56/63/2.5-9	3,500	4,326	1,835	2,800	1,608	

MEETING ROOMS IN HALL B									
BCC	B1 M1	218	17.9/18.1/3.3	292	218	138	216	150	60
BCC	B1 M2	48	8.9/18.1/3.3	164	48	30	48	36	26
BCC	B3 M1/2/3/4/5/6/7/8/9/10	65	9/9/3.2	81	65	30	48	36	26
BCC	B3 M1-2/M3-4/M5-6/M7-8/M9-10	169	18/9/3.2	162	169	90	136	90	52
BCC	B3 M1-4/M5-8	312	18/18/3.2	324	312	160	240	156	62
BCC	B3 M5-10	546	27/18/3.2	486	546	280	284	264	90
BCC	B4 M1/2/3/4/5/6/7/8/9/10	65	9/9/3.2	81	65	30	48	36	26
BCC	B4 M1-2/M3-4/M5-6/M7-8/M9-10	169	18/9/3.2	162	169	90	136	90	52
BCC	B4 M1-4/M5-8	312	18/18/3.2	324	312	160	240	156	62
BCC	B4 M5-10	546	27/18/3.2	486	546	280	384	264	90
BCC	B5 M1/M2/M3/M4	65	9/9/3.2	81	65	30	48	36	26
BCC	B5 M1-2/M3-4	169	18/9/3.2	162	169	90	136	90	52
BCC	B5 M1-4	312	18/18/3.2	324	312	160	240	156	62

MEETING ROOMS IN HALL HB									
BCC	HB4 M1	150	15/12/3.3	180	150	84	128	84	
BCC	HB4 M2	190	15/12/3.3	180	190	98	128	84	
BCC	HB4 M1-M2	380	15/24/3.3	360	380	196	256	186	

MEETING ROOMS IN HALL C									
BCC	C1 M0	392	22.4/18/4.4	420	366	166	280	204	
BCC	C1 M1/M2/M3/M4/M5	420	26/18/4.4	468	420	188	280	228	
BCC	C4 M1	2,210	72/27.4/8.15	1,944	2,120	990	1,200	978	

MEETING ROOM IN HALL C5									
BCC	C5	2,700	80/40/6.35	3,200	2,700	1,320	1,776	1,404	

MEETING ROOM IN CENTER HALL E									
BCC	Focus	150		375					

MEETING ROOMS IN HALL H									
BCC	H M1	30	15/4/2.2	60	30				
BCC	H M2/M3	15	5/4/2.5	20	15				
BCC	H M4/M5/M6	312	18/18/4.6	324	312	140			
BCC	H M4-M5/M5-M6	725	-/-4.6	684	725	340			
BCC	H M4-M6	1,100	-/-4.6	1,026	1,100	540			

HALLS

Loc.	No.	L/W/H (flexible)	m ²
CONGRESS HALL A			
BCC	A1	56/36/2.5-9	2,000
BCC	A2	37/27/2.5-9	1,000
BCC	A3	19/27/2.5-9	500
BCC	A2-A3	56/27/2.5-9	1,500
BCC	A1-A3	56/63/2.5-9	3,500

HALL B			
BCC	B0 1	-/27/3.2	1,077
BCC	B0 2	-/27/3.2	735
BCC	B1	53.9/27/3.3	1,330
BCC	Light arcade between B1-B2	36/9/9	594
BCC	B2	54/27/2.5	1,624
BCC	Light arcade between B2-B3	36/9/9	567
BCC	B3	63/27/2.5-3.3	1,701
BCC	Light arcade between B3-B4	36/9/9	567
BCC	B4	63/27/2.5-3.3	1,701
BCC	Light arcade between B4-B5	36/9/9	567
BCC	B5	54/27/2.5	1,512
BCC	Light arcade between B5-B6	36/9/9	594
BCC	B6	63/27/2.5-3.3	1,110
BCC	B0-B6	-/-12.5-9	13,679

HALL HB			
BCC	HB3	36/27/3.3	972
BCC	HB4	32-36/27/3.3	927

HALL C			
BCC	C1	108/26-27/4.3	2,916
BCC	Light arcade between C1-C2	99/9/6.2	891
BCC	C2	103/27/6.55	2,592
BCC	Light arcade between C2-C3	99/9/7.7	891
BCC	C3	108/27/8.05	2,916
BCC	Light arcade between C3-C4	108/9/7.7	972
BCC	C4	108/27/8.15	2,835
BCC	C1-C4	-/-4.4-8.25	14,013

CENTER HALL E			
BCC	E North	70/18-45/16-25	2,232
BCC	E South	110/27-45/13-19	3,149
BCC	E	180/18-45/13-25	5,381

EAST HALL H			
BCC	H	121/93/4-6	10,900

FOYERS

Loc.	No.	L/W/H (flexible)	m ²
BCC	B0	-/27/3.2	185
BCC	East Hall	42/18/4.4	756
BCC	Auditorium	54/25/3.9	1,202
BCC	Congress	15-36/63/3-10	1,667
BCC	Aud. Balcony	-	339
BCC	The Terrace	21/20/5.5-7.5	365
BCC	Main Lobby	-	2,120
T2	Ballroom Lobby		207
T2	Conf. Reception 1		148



Center Boulevard 5
DK-2300 Copenhagen S
T +45 3247 3000
F +45 3247 3001
E hotel@bellasky.dk
W acbellaskycopenhagen.com

Revised October 2016