



## VENTURE INTO THE EXTRAORDINARY

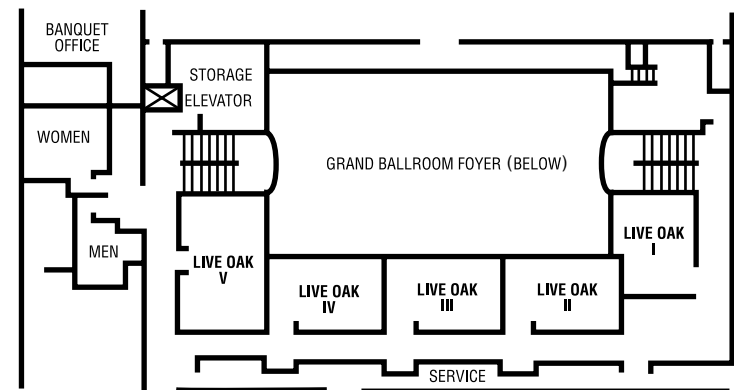
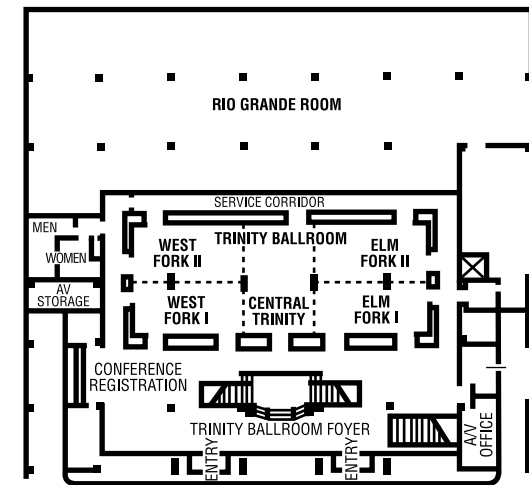
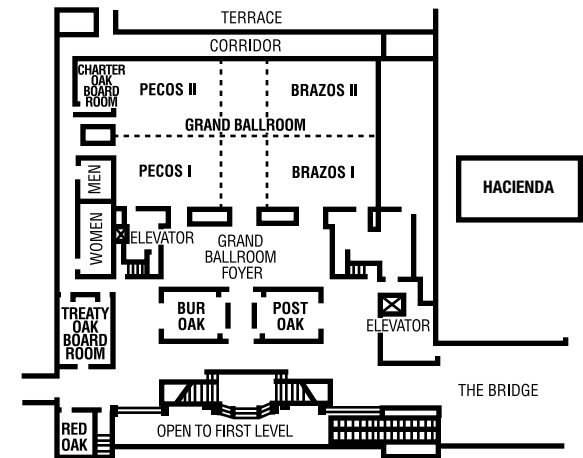
An urban jewel in beautiful downtown Fort Worth, The Worthington Renaissance® Fort Worth Hotel is one of the city's AAA Four-Diamond luxury locations. Discover a new adventure at every turn—luxury, stylish design and local flavor in historic Sundance Square and moments from the Museum District, Cowboys Stadium and other local landmarks. Indulge your senses in 504 newly renovated guest rooms that reflect Western elegance and unparalleled amenities, including high-speed Internet access, innovative Plug-In technology and spacious work desks. Fuel inspiration at gatherings large and small in 21 meeting rooms with over 57,000 square feet of premium space. Enjoy fine dining at *Vidalias*, relax at the indoor pool, stay in shape at the fitness center, or take luxury to new heights in our premium suites or on the Concierge Level.

THE WORTHINGTON RENAISSANCE FORT WORTH HOTEL  
200 Main Street, Fort Worth, Texas 76102  
t: 817.870.1000 f: 817.338.9176 • [Marriott.com/dfwdt](http://Marriott.com/dfwdt)

**R**  
**RENAISSANCE®**  
THE WORTHINGTON HOTEL  
FORT WORTH

MEETING ROOM	LxWxH	SQ. FEET	THEATER	SCHOOLROOM	CONFERENCE	U-SHAPE	RECEPTION	BANQUET
Grand Ballroom	135x78x22	10,530	1,200	650	—	—	1,400	840
Pecos I or Pecos II	55x39x22	2,145	250	125	—	50	225	180
Brazos I or Brazos II	57x39x22	2,223	250	125	—	50	225	180
Hacienda	—	—	—	—	—	—	180	160
Worthington*	—	—	75	—	—	—	75	50
Terrace	—	11,288	—	—	—	—	600	400
Bur Oak or Post Oak	27x32x12	864	65	40	28	24	70	50
Red Oak	16x23x12	368	32	24	—	18	30	30
Charter Oak Boardroom	25x18x10	450	—	—	12	—	—	—
Treaty Oak Boardroom	23x29x10	667	—	—	20	—	—	—
Trinity Ballroom	116x47x12	5,452	300	200	—	—	500	400
Elm Fork I and II or West Fork I and II	44x47x12	2,068	130	50	—	45	200	160
Elm Fork I, Elm Fork II, West Fork I or West Fork II	22x44x12	968	45	—	50	35	100	80
Central Trinity	27x47x12	1,269	90	60	50	45	100	80
Rio Grande Room	—	12,600	—	—	—	—	—	760
Live Oak I	20x24x10	480	30	20	18	12	20	30
Live Oak II, III, IV (each)	16x27x10	432	36	20	18	12	20	30
Live Oak Room V	—	504	30	20	—	—	—	—

\*Not shown.



#### WE ARE HERE

Ideally located in Sundance Square; one of the city's 4-Diamond hotels | Just 17 miles to Dallas/Fort Worth (DFW) International Airport | Close to top attractions like Cowboys Stadium in Arlington, Texas Christian University (TCU), Lone Star Park, Six Flags® Over Texas, Fort Worth Zoo/Forest Park, and Rangers Ballpark in Arlington

#### THE DETAILS

12 floors | 474 rooms | 30 suites | 1 Concierge Level

#### SIP AND SAVOR

BarWired | Lobby Bar | Vidalias

#### A LITTLE FUN AND RELAXATION

Worthington Athletic Club | Indoor pool and whirlpool | Golf at Iron Horse Golf Course, Golf Club at Fossil Creek, Lost Creek Golf Course, and Rockwood Golf Course | Sauna | Tennis | Sport Court®

#### THE EXTRAS

High-speed Internet access | Giftshop/Newsstand | Room service, 6:00 AM-12:00 AM | Full-service business center | Pets welcome (fee)

#### LOCAL FINDS

Amon Carter Center | Bass Performance Hall | Billy Bob's Texas | Casa Manana Theater | Fort Worth Zoo/ Forest Park | Rangers Ballpark in Arlington | Kimbell Art Museum/ Museum District | Lone Star Park (Horse Racing) | Six Flags Over Texas and Hurricane Harbor | Stockyards

#### THE PLACE TO MEET

21 meeting rooms | 57,000 square feet of total meeting space; maximum seating capacity for 1,200 guests | Catering and AV equipment available