

JW MARRIOTT®  
ORLANDO GRANDE LAKES®



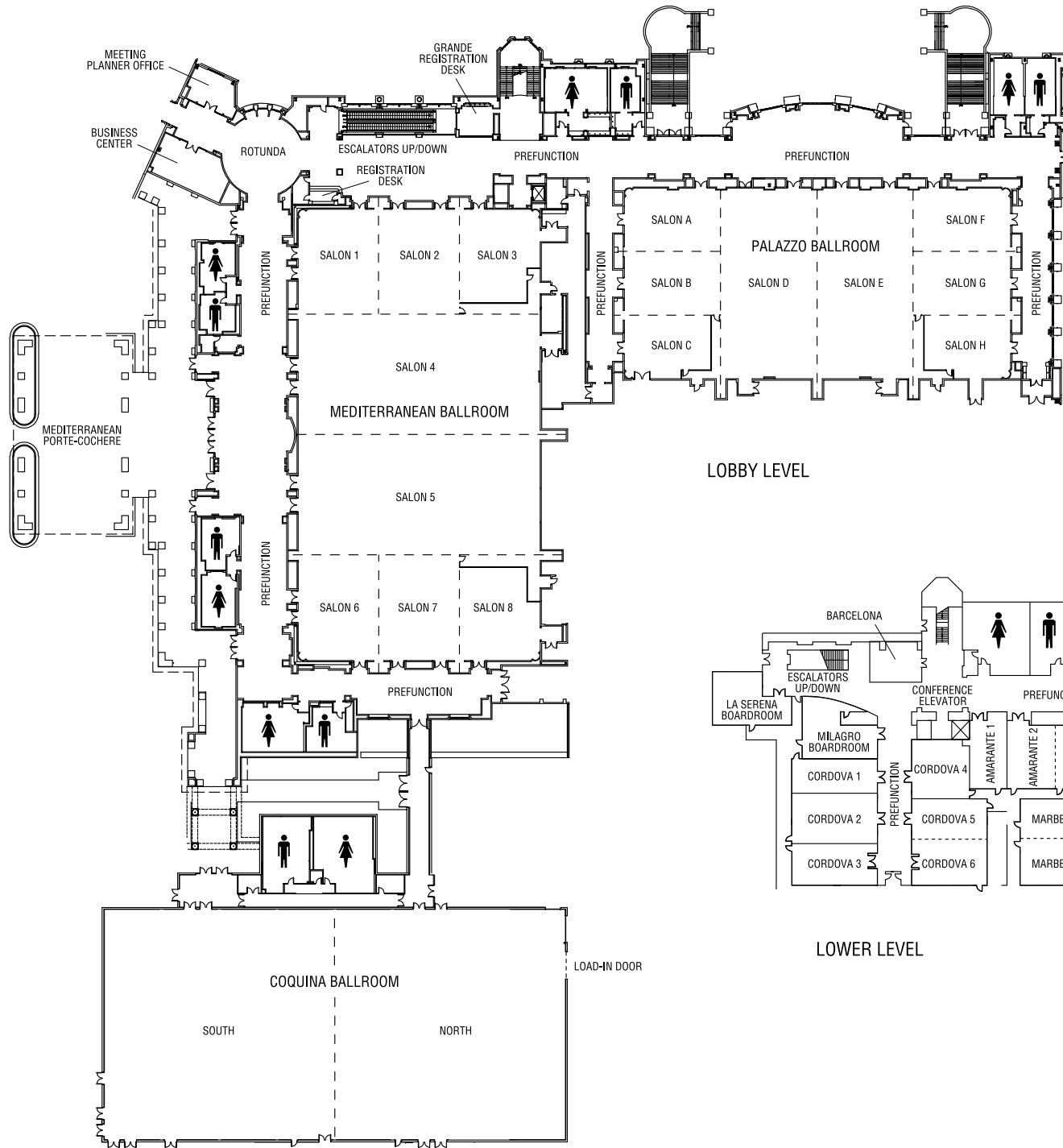
*Inspiring experiences.  
Authentically crafted.*



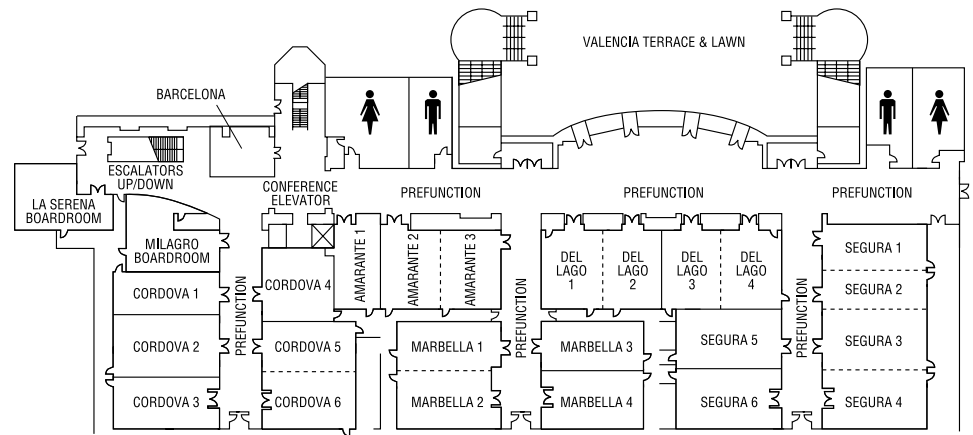
ROOF-TOP HAMMOCK EXPERIENCE

## Welcome

Invite your guests to discover incredible architecture, old-world elegance and lush, tropical gardens at JW Marriott Orlando, Grande Lakes®. Here you'll find everything you need to create an enriching and authentic Orlando experience. Events flow seamlessly through 100,800 square feet of versatile space, with three stylish ballrooms all on a single level. The adjacent Ritz-Carlton® hotel features an additional 47,000 square feet of space. Captivate guests with 65,000 square feet of enticing outdoor function space located near the lake, giving any function a truly serene atmosphere. Immerse yourself in 1,000 richly appointed guest rooms, including 64 lavish suites, where you'll find plenty of space to unwind and relax. And to complete the experience, our friendly, attentive staff will take care of every detail, so you can stay focused on what matters most. Let JW Marriott Orlando, Grande Lakes® inspire you.



LOBBY LEVEL



LOWER LEVEL



LAZY RIVER POOL

## Meeting Space Highlights

- 46 meeting rooms
- 100,800 square feet of total meeting space
- Breakout rooms and ballrooms all located on one level (each its own level)
- Largest meeting room is Mediterranean Ballroom with maximum meeting space of 29,666 square feet and maximum seating capacity of 3,248



COQUINA BALLROOM



Meeting Room	DIMENSIONS		CAPACITY						
	LxWxH	Sq. Ft.	Theater	Conference	U-Shape	Schoolroom	Reception	Banquet	
Lobby Level									
Mediterranean Ballroom	126x234x18	29,666	3,248	—	—	1,980	3,123	2,300	
Mediterranean Salon 1	42x54x18	2,285	234	—	54	144	241	150	
Mediterranean Salon 2	42x54x18	2,289	234	—	54	160	241	150	
Mediterranean Salon 3	42x46x18	1,956	220	—	46	144	206	120	
Mediterranean Salon 4	126x63x21	7,938	896	44	—	522	836	660	
Mediterranean Salon 5	126x63x21	7,938	896	44	—	522	836	660	
Mediterranean Salon 6	42x54x18	2,285	234	—	54	144	241	150	
Mediterranean Salon 7	42x54x18	2,289	234	—	54	160	241	150	
Mediterranean Salon 8	42x46x18	1,956	220	—	46	144	206	120	
Foyer and Prefunction	—	9,796	—	—	—	—	1,031	—	
Palazzo Ballroom	99x201x18	19,984	2,156	—	—	1,332	2,104	1,600	
Palazzo Salon A	50x33x18	1,661	187	—	42	100	175	110	
Palazzo Salon B	50x32x18	1,611	208	—	42	108	170	110	
Palazzo Salon C	43x33x18	1,422	162	—	38	90	150	80	
Palazzo Salon D	50x99x20	5,009	550	26	—	340	527	320	
Palazzo Salon E	50x99x20	5,009	550	26	—	340	527	320	
Palazzo Salon F	50x33x18	1,661	187	—	42	100	175	110	
Palazzo Salon G	50x32x18	1,611	208	—	42	108	170	110	
Palazzo Salon H	43x33x18	1,422	162	—	38	90	150	80	
Foyer and Prefunction	—	7,552	—	—	—	—	800	—	
Coquina Ballroom	120x240x29	28,000	3,100	—	—	1,800	3,000	2,100	
Coquina North	120x120x29	14,400	1,550	90	—	900	1,500	1,050	
Coquina South	120x120x29	14,400	1,550	90	—	900	1,500	1,050	
Lower Level									
Barcelona	17x16x12	272	—	8	—	—	—	10	
La Serena Boardroom	26x27x12	762	—	16	—	—	—	—	
Milagro Boardroom	20x32x12	670	—	12	—	—	—	—	
Cordova 1	44x17x12	777	75	28	30	45	82	40	
Cordova 2	44x26x12	1,169	120	28	34	78	123	80	
Cordova 3	44x21x12	896	106	28	30	56	94	40	



DELUXE GUEST ROOM



DIMENSIONS

CAPACITY

Meeting Room	LxWxH	Sq. Ft.	CAPACITY					Reception	Banquet
			Theater	Conference	U-Shape	Schoolroom			
<b>Lower Level (continued)</b>									
Cordova 4	29x30x12	903	95	22	26	60	95	60	
Cordova 5	37x20x12	749	75	22	28	51	79	40	
Cordova 6	37x23x12	845	84	22	26	58	89	60	
Amarante 1	19x37x12	731	68	22	22	42	77	30	
Amarante 2	25x32x12	808	90	26	22	54	85	50	
Amarante 3	25x32x12	808	90	26	22	54	85	50	
Marbella 1	42x20x12	843	90	28	30	50	89	40	
Marbella 2	42x24x12	976	109	34	32	68	103	60	
Marbella 3	42x19x12	815	85	28	30	48	86	40	
Marbella 4	41x24x12	1,041	111	28	32	68	110	60	
Del Lago 1	25x32x12	800	96	26	26	58	84	50	
Del Lago 2	25x32x12	800	96	26	26	58	84	50	
Del Lago 3	25x32x12	800	96	26	26	58	84	50	
Del Lago 4	25x32x12	800	96	26	26	58	84	50	
Segura 1	41x17x12	708	67	28	28	42	75	30	
Segura 2	41x16x12	662	63	28	28	39	70	30	
Segura 3	41x26x12	1,074	118	28	32	68	113	60	
Segura 4	41x24x12	982	118	28	32	70	103	60	
Segura 5	43x25x12	1,120	127	28	38	78	118	60	
Segura 6	43x24x12	1,044	124	28	32	70	110	60	
Prefunction Space	21.5x29x12	13,118	—	—	—	—	1,365	—	
Almeria 1	36x27x12	832	65	20	—	40	56	30	
Almeria 2	36x16x12	1,115	75	20	21	50	75	60	
<b>Outdoor Event Space</b>									
Valencia	—	20,000	—	—	—	—	2,100	1,000	
Valencia Terrace	—	4,600	—	—	—	—	160	120	
Lobby Patio	—	500	—	—	—	—	50	30	
Fairways Lawn	—	20,000	—	—	—	—	2,100	1,000	
Citrus Garden	—	2,700	—	—	—	—	150	100	
Pool Deck	—	18,225	—	—	—	—	—	—	
Whisper Creek Farm	—	6,000	—	—	—	—	—	—	
Quench South Lawn	—	4,500	—	—	—	—	200	120	

## JW Marriott® Orlando, Grande Lakes®

4040 Central Florida Parkway, Orlando, FL 32837

Phone 407.206.2300 Fax 407.206.2301

Home to over 500 acres of tropical landscape, just minutes from exciting Orlando attractions, nightlife and world-class shopping.

### Accommodations

26 floors • 934 rooms • 64 suites

### Guest Services

High-speed Internet access in guest rooms (Wired & Wireless) • Wireless Internet access in public spaces and meeting rooms

### Restaurants & Lounges

*Primo* by chef Melissa Kelly, sensible and contemporary Italian cuisine emphasizing the freshest local ingredients featuring an on-site organic garden • *Whisper Creek Farm: The Kitchen*, craft beers and farm inspired comfort food including flatbreads, small sandwiches, snacks and small plates • *Citron*, an American brasserie of contemporary and colorful classic American food • *The Lobby Lounge*, fresh sushi bar and creative cocktails in an eclectic yet chic atmosphere • *Quench Poolside Bar & Grill*, enjoy hand-built tropical mixology to help you relax by the pool • *Café Bodega*, an eco-friendly grab-and-go-café, featuring grilled pizza, sandwiches and alternative snacks • Starbucks® • Five additional dining options available at the adjoining Ritz-Carlton® hotel

### Recreation & Leisure

The Ritz-Carlton® Spa featuring a fitness center, private lap pool, 40 treatment rooms, full-service salon and Vitale Spa Café • The Ritz-Carlton Golf Club featuring an 18-hole signature Greg Norman course with a Golf Clubhouse complete with a Fairways Pub, locker room facilities and a golf shop • Lazy River Pool • Adventure experiences including fly-fishing school, kayak school and eco-tours on Shingle Creek, the headwaters to the Florida Everglades • Jogging/fitness trail • Nature preserve trail • Sand volleyball • Three lighted tennis courts

### Attractions

Walt Disney® World • Discovery Cove • SeaWorld® Adventure Park • Aquatica • Busch Gardens • Kennedy Space Center • Central Florida Zoo • Universal Studios® Florida • The Mall at Millenia • Orlando Premium Outlets

