

MASSAGES

TOTAL INDULGENCE (50 / 80 MINUTES)

A deeply relaxing head to toe aromatherapy massage using slow, controlled movements and including a face and scalp massage to relax the mind and muscles. **JD80 / JD110**

SWEDISH MASSAGE (50 / 80 MINUTES)

A classic full body, invigorating massage performed with medium to firm pressure to release fatigue and body aches. **JD78 / JD108**

THAI MASSAGE (50 / 80 MINUTES)

An oil-free treatment using varied techniques such as deep pressure and rocking movements to enhance energy flow leaving you refreshed and revived. **JD78 / JD108**

HOT STONE THERAPY (50 / 80 MINUTES)

One stroke of the warm basalt lava stones is equivalent to 10 strokes of the palm and creates an aura of warmth. The muscles are relaxed and rejuvenated in a unique sensation. **JD78/ JD108**

COUPLES INDULGENCE (50 MINUTES)

A sensual full body massage, side by side in our couple's suite. After the treatment, spend some time relaxing on a private terrace overlooking the Dead Sea. **JD156**

ALL PRICES ARE INCLUSIVE OF SERVICE CHARGE AND TAXES

DEAD SEA MARRIOTT RESORT & SPA
DEAD SEA ROAD, SWEIMEH
DEADSEA@MARRIOTT.COM
+(962) 5 356 0400

OPENING HOURS

Daily from 8:30 AM - 9:00 PM

ENTRANCE FEE

For resort guests **JD20**
For non-resort guests **JD30**

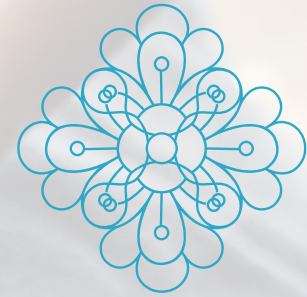
The Spa Experience includes day-use of the spa facilities and is complimentary when you book any of our treatments.

AGE RESTRICTIONS

The Spa is an adults only sanctuary catering exclusively to guests aged 18 years or older. Children, even if accompanied by an adult are not permitted within The Spa facilities or treatment area.

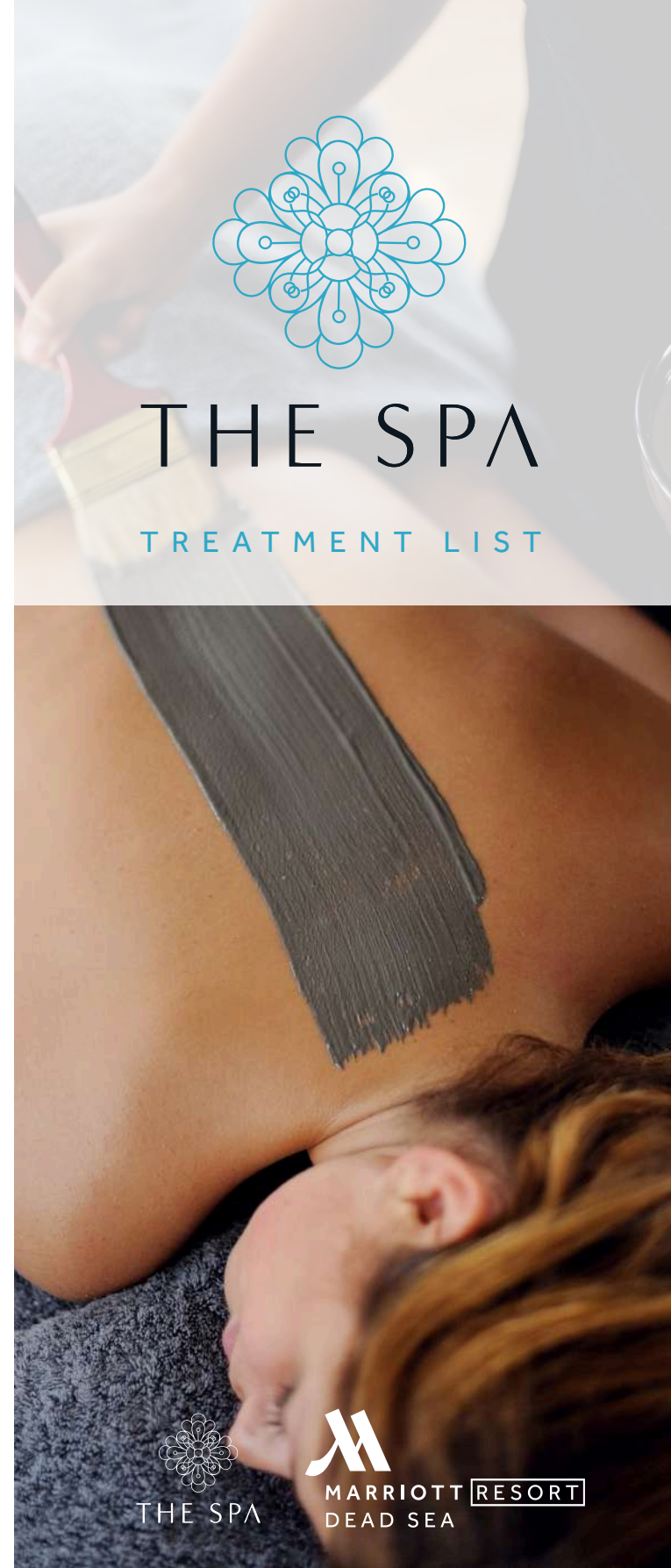
CONTACT US

For more information and reservations call: +962 5 356 0400
or email: deadsea@marriotthotels.com



THE SPA

TREATMENT LIST



SIGNATURE
RITUALSREJUVENATION RITUAL
(150 MINUTES)

A body scrub made with Dead Sea salt crystals and dates, detoxifying heated mud wrap, deeply relaxing oud massage and to finish, an aromatherapy facial with a luxury eye treatment. **JD199**

BESPOKE (80 MINUTES)

Tailor-make your own experience by choosing any 3 of the following treatments: back, neck & shoulder massage, Arabic coffee or Lemon Mint scrub, Indian head massage, mini mud wrap or Express facial. **JD115**

ARABIAN ENVELOPMENT
(80 MINUTES)

A full body treatment with an Arabian twist; a body polish and mud wrap infused with oud oil and completed with the application of Oud body butter leaving the skin feeling soft and hydrated. **JD115**

FACE & BODY RITUAL (80 MINUTES)

A sweet and savory scrub, followed by a full body calming & relaxing massage, reinitiating the body through an indescribable feeling of peace and inner strength. **JD120**

ONE WITH
NATURE (OWN)

OWN RADIANCE (50 MINUTES)

Bring your OWN radiance with our healing Dead Sea mud envelopment and renew with our unique scrub that blends the Earth's natural stimulants with Dead Sea minerals. **JD78**

OWN AWAKENING (80 MINUTES)

Energize and revitalize with a healing Dead Sea mud wrap, followed by an aromatherapy oil massage to rejuvenate your body. **JD111**

OWN HARMONY (50 MINUTES)

Cleanse and exfoliate your skin with our special scrub that blends natural stimulants with Dead Sea minerals. After, relax with our back and neck massage using Dead Sea aromatherapy oil. **JD78**

ALL PRICES ARE INCLUSIVE OF SERVICE CHARGE AND TAXES

DEAD SEA MARRIOTT RESORT & SPA

DEAD SEA ROAD, SWEIMEH

DEADSEA@MARRIOTT.COM

+(962) 5 356 0400

FACIALS

HEART OF THE OCEAN RITUALS
COLD CREAM MARINE FACIAL
(60 MINUTES)

A real haven for all skin types, which leaves it nourished brightened, hydrated and relaxed. **JD80**

EYE EXPERT TREATMENT
(30 MINUTES)

This ultra-relaxing treatment combined with an eye massage mask that reduces puffiness and dark circles, gently smooths out wrinkles and fine lines and instantly rejuvenates the eye contour. **JD50**

DEAD SEA MUD FACIAL
(50 MINUTES)

A deep cleansing facial using Dead Sea mud and trace elements to eliminate impurities and leave a fresh glowing look. **JD78**

COLLAGEN RADIANCE FACIAL
(60 MINUTES)

To fight the first sign of aging, the skin is infused with Native Marine Collagen, leaving it hydrated with a radiant complexion. **JD85**

HYALURONIC SMOOTH & FILL FACIAL
(60 MINUTES)

This facial moisturizes the entire face and fills deep wrinkles in just one hour. The skin looks younger and the complexion is ultra-radiant. **JD86**

SILICIUM MARIN SUPER LIFT FACIAL
(60 MINUTES)

This facial includes an anti-wrinkle massage and double firming mask that erases wrinkles and restores the complexion's luminosity. **JD88**

EXCEPTION MARINE
REDENSIFYING TREATMENT
(60 MINUTES)

This lifting facial is designed to combat all signs of ageing by redefining the facial contour and filling out wrinkles. **JD88**

GENTLEMEN FACIAL FULL
TREATMENTS (60 MINUTES)

Whether your concern is dehydration, dryness, sensitivity or oiliness, this treatment provides a tailored solution for male skin, leaving it revitalized and perfectly balanced. **JD80**

ALL PRICES ARE INCLUSIVE OF SERVICE CHARGE AND TAXES

-BODY TREATMENTS-

DEAD SEA NATURAL MUD WRAP
(50 MINUTES)

The body is cocooned with the famous Dead Sea mud; rich in minerals and trace elements to moisturize and smooth the skin. **JD72** Anti-cellulite Mud. **JD76**

DEAD SEA SALT BODY POLISH
(25 MINUTES)

Essential trace elements from the Dead sea are used to exfoliate the skin leaving it feeling brand new. Classic, lemon, almond or papaya. **JD50**

SILKY SMOOTH BODY WRAP
(30 MINUTES)

A silky cream infused with Sacred Lotus and enriched with Rice Germ oil regaining lasting comfort. **JD75**

SWEET AND SAVOURY SCRUB
(25 MINUTES)

Sea Salt, Brown Sugar and essential oils are gently rubbed all over the body to renew the skin. **JD50**

EXPRESS
THERAPIES

BACK DE-STRESSOR (25 MINUTES)

When you don't have much time, but under a lot of stress this massage focuses on the areas that retain the most stress. **JD48** With hot stones. **JD50**

FOOT INDULGENCE (25 MINUTES)

Invigorating and refreshing leg and foot massage. **JD48**

HEAD IN THE CLOUDS MASSAGE
(25 MINUTES)

Head and scalp massage that uses gentle, stimulating techniques to relieve muscular tension. **JD45**

THE SPA EXPRESS FACIAL (25 MINUTES)

When you want to look your best but don't have a lot of time this is the perfect facial for you. **JD50**

MINI MUD FACIAL (25 MINUTES)

A revitalizing facial with natural minerals and trace elements from the Dead Sea. **JD50**

REFLEXOLOGY (25 MINUTES)

A trigger point massage on the feet which corresponds and relates to specific areas of the body. **JD48**

ALL PRICES ARE INCLUSIVE OF SERVICE CHARGE AND TAXES



THE SPA

MARRIOTT RESORT
DEAD SEA