



Sheraton®

TAITUNG HOTEL

Sheraton Taitung Hotel

**EFFORTLESS EXPERIENCES AND SMARTER STAYS MAKE TIME
FOR MORE EXPLORATION IN MORE DESTINATIONS.**

STAY

Sheraton Taitung Hotel is located in the downtown area of Taitung City. Featuring convenient transportation and accessibility, Sheraton Taitung Hotel is only 15 minutes' drive to Taitung Train Station, and 20 minutes to Taitung Airport. It is adjacent to local shopping, entertainment and cultural attractions.

FITNESS

Sheraton Fitness is designed to deliver maximum results in minimum time, giving guests the smart solutions to fuel fast and focused workouts. With clever hacks and cutting-edge equipment, guests can customize their workout to their day and their stay.

EXPERIENCE

- Fitness Center
- Sheraton Club Lounge
- Swimming Pool
- Sauna
- Meeting and Event Facilities

SPG®

Maximize every stay with the Starwood Preferred Guest program. Earn award nights and award flights with no blackout dates. For details, visit spg.com.

EXPLORE

Located in eastern Taiwan, on the west side of the Central Mountain Range, is regarded as Taiwan's most beautiful gardens - Taitung, with its rich landscape resources and cultural characteristics. In recent years the area has focused on the development of tourism resources such as hot air ballooning and indigenous Taiwanese life and culture to showcase them to visitors.

FOOD & BEVERAGE VENUE

Sheraton Taitung Hotel provides a rich array of dining choices for guests to explore.

ALIHI

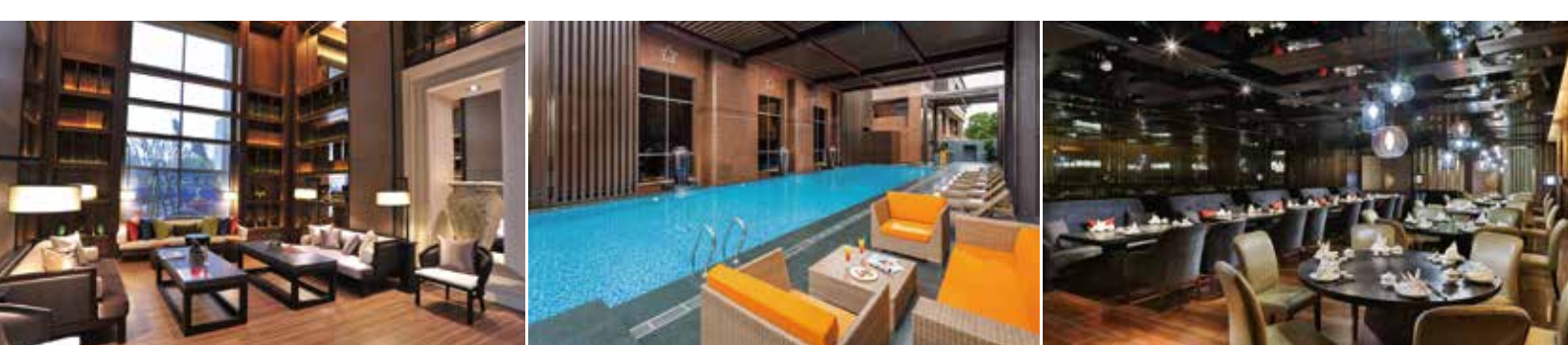
Experience unforgettable dining at ALIHI, our all-day dining restaurant where you can savor a selection of western and international dishes with great service. Our tempting buffets and open kitchens provide an interactive dining experience. Whether for business or leisure, we offer generous buffet or a la carte meals in a warm and welcoming area.

HOYEA

HOYEA Chinese restaurant is located on the 2nd floor with 160 seats offering authentic Cantonese cuisine and dim sum an elegantly-appointed ambience. Settle down for a deeply satisfying dining experience for lunch or dinner daily.

MOON BAR

Stylish and relaxing, the lounge bar offers a tempting array of fine food and beverages, and an ideal place to meet for a coffee, enjoy Afternoon Tea, a light snack for an evening cocktail.



Sheraton Taitung Hotel

No. 316 Zhengqi Rd., Taitung City, Taitung County 95044, Taiwan
 T 886 89 328 858
 Sheratontaitung@sheratontaitung.com
 sheraton.com/taitung

GUEST ROOMS & SUITES

The Sheraton Taitung Hotel has 290 elegant and spacious rooms featuring inviting views over the city skyline. Each room offers amenities ranging from Wi-Fi, luxurious bedding with down comforters and cotton-rich linens and 40" flat-panel TV and refreshment center to separate bathrooms featuring rainforest showers.

ROOM TYPES

ROOM	NUMBER	AREA (SQM)
DELUXE ROOM	70	26
ACCESSIBLE ROOM	3	30
PREMIER DELUXE ROOM	68	26
GRAND DELUXE ROOM	44	26
CLUB ROOM	52	26
SUPERIOR FAMILY ROOM	4	46
DELUXE FAMILY ROOM	38	46
CLUB DELUXE ROOM	2	46
CLUB FAMILY ROOM	6	56
CLUB SUITE	2	50
PRESIDENTIAL SUITE	1	116
TOTAL	290	

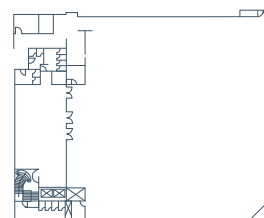


MEETINGS

Sheraton Taitung Hotel offers a total of 2336 square meters of meeting space and grand ballroom, that can be scaled for various functions and sizes.

VENUE	AREA (SQM)	HEIGHT (M)	THEATER	CLASS ROOM	U-SHAPE	BANQUET	COCKTAIL
3F BALLROOM	613	5	400	216	54	350	200
5F THEATRE	440	4	332	-	-	-	-
B1 BANQUET HALL A	706	3	320	144	54	340	240
B1 BANQUET HALL B	559	3	180	84	42	260	170
B1 BANQUET HALL A+B	1265	3	500	264	-	750	430

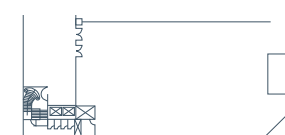
B1 BANQUET HALL A + B



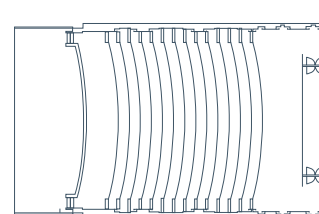
B1 BANQUET HALL B



B1 BANQUET HALL A



5F THEATRE



3F BALLROOM

