



CALGARY MARRIOTT DOWNTOWN HOTEL

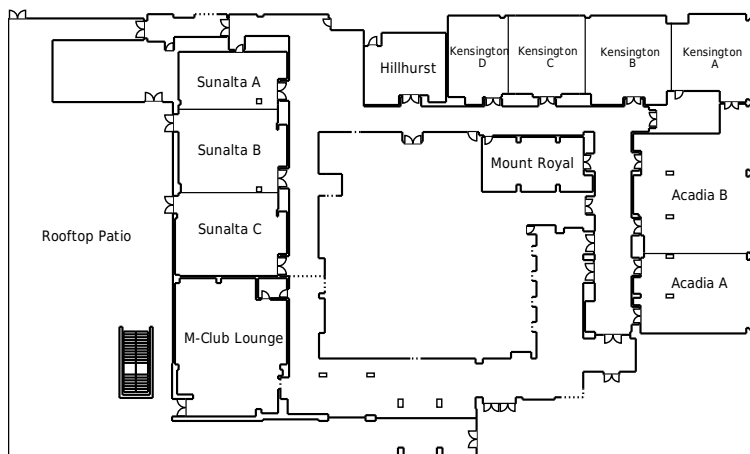
**ACCOMPLISH MORE
WITH YOUR MEETING**

CALGARY MARRIOTT DOWNTOWN HOTEL

110 9th Ave SE, Calgary AB T2G 5A6

calgarymarriott.com

T 403.266.7331 | F 403.269.1961



Meeting Room	DIMENSIONS			CAPACITY				
	LxWxH	Sq. Ft.	Theatre	School Room	Boardroom	U-Shape	Hollow Square	Reception
Kensington A (W)	27x25.5x10	738	48	16	18	18	18	30
Kensington B	31x25.5x10	883	96	40	22	26	24	50
Kensington C	27x25.5x10	576	57	24	20	18	18	40
Kensington D	23x25.5x10	631	60	16	18	18	18	30
Kensington A/B	58x25.5x10	1,621	96	32	36	36	48	60
Kensington A/B/C	80x25.5x10	2,197	172	64	56	58	72	100
Kensington B/C	53x25.5x10	1,459	153	64	42	48	56	90
Kensington B/C/D	76x25.5x10	2,090	184	64	56	64	80	100
Kensington C/D	45x25.5x10	1,207	136	48	38	44	60	70
Kensington A/B/C/D	103x25.5x10	2,828	329	120	88	90	98	230
Mount Royal	18.5x34.5x10	668	42	24	24	17	18	35
Acadia A (P, W)	27x37.5x10	1,033	88	40	22	24	32	50
Acadia B (P, W)	40.5x37.5x10	1,679	140	72	28	40	48	90
Acadia AB (P, W)	67.5x37.5x10	2,712	228	80	56	64	72	160
Inglewood	24x16x10	381	—	—	14	—	—	—
MacKenzie	24x16x10	381	—	—	14	—	—	—
Hillhurst	22x17x10	614	45	33	20	21	24	35
Sultana A (P)	18.5x33.5x10	657	43	27	20	21	30	40
Sultana B (P)	30x33.5x10	1,066	94	57	26	33	42	50
Sultana C (W)	28x33.5x10	1,066	96	48	26	30	36	50
Sultana A/B (P)	48.5x33.5x10	1,723	161	84	38	42	48	85
Sultana B/C (P)	58x33.5x10	2,132	190	105	44	54	60	115
Sultana A/B/C (P, W)	76.5x33.5x10	2,789	224	135	62	72	78	200
Sultana Prefunction	25x25x10	640	—	—	—	—	—	50
Patio	76x70	5,500	400	—	—	—	—	400

ACCOMMODATIONS

378 newly transformed guestrooms and 10 suites • Accessible rooms available • Concierge Level rooms with upgraded amenities and access to exclusive M Club Lounge with special perks • Luxurious bedding, fluffy pillows and down comforters • Innovative work area and comfortable sitting area • 48" flat-screen panel television • Mini-fridges in all guestrooms • Large bathrooms with spa-inspired Thann bath amenities • Individual climate control • In-room safe

RESTAURANT & LOUNGES

ONE18 EMPIRE, a whiskey-inspired bar and restaurant serving breakfast, lunch, dinner and late-night snacks in a casual setting; serves locally-inspired cuisine, unique whiskey menu, craft beer and more • On-site Starbucks® serves fresh coffee, beverages and snacks

RECREATION & LEISURE

24-hour state-of-the-art fitness centre on site with treadmills, elliptical trainers, recumbent bikes, free weights, strength training equipment, stability balls and mats • Fitness centre equipment features Life Fitness technology with 19" digital touch screens to enhance your workout experience • Heated indoor pool and whirlpool open 24-hours/day • Walking, running and biking trails nearby

MEETING FACILITIES

11,000 square feet of flexible function space, including newly added space • 16 event spaces with abundant natural lighting • Our newest space, Sunalta, offers a neutral décor palate, natural lighting and scenic views over Stephen Avenue • Large seasonal patio overlooking trendy Stephen Avenue • Marriott's new Meetings Imagined program offering inspiration and great tools for planning exceptional events • Customizable menus to meet all budgets

RED COAT DIRECT

Enjoy Marriott's popular Red Coat Direct service and send real-time requests to your Event Manager without leaving your seat • Manage your meeting through the Red Coat Direct app to order more coffee, adjust the room temperature or communicate other requests to your Event Manager

MOBILE GUEST SERVICES

Download Marriott's mobile app and experience guest service in a whole new way, from check-in to check-out

LOCATION

Exceptional location in the heart of downtown Calgary • Conveniently located in downtown business district • Close to major Calgary attractions, dining, shopping and entertainment options • Close to Calgary Tower, Stephen Avenue, Scotiabank Saddledome