



THE WESTIN
BRISBANE

The Westin Brisbane

Revive your spirit and stimulate your senses with a stay at The Westin Brisbane. Located in the dynamic hub of the Brisbane CBD, just minutes from the Queen Street Mall, and in close proximity to many major corporate offices, this relaxing urban retreat is ideal for business and leisure travellers. Thoughtful attention is paid to the most important elements of your stay to ensure each visit leaves you well rested, well-nourished and well cared for. Inviting guest rooms, innovative dining options, an open pool deck and the signature Heavenly® Spa by Westin, all let you create your own experience.

THE WESTIN BRISBANE

111 Mary Street
Brisbane, QLD 4000,
Australia

westin.brisbane@westin.com

westinbrisbane.com

(07) 3557 8888

AWAKEN

Leave the world behind in one of our 299 beautifully appointed, spacious guest rooms and suites. Each light-filled room features high speed internet access, 55 inch flat screen LCD integrated TV, work desk with executive chair, in-room laptop safe and personal chaise lounge. Westin signature amenities and services provide everything you need for a revitalizing stay, including the Westin Heavenly® Bed, rain shower and in room refreshment centre.

To further enrich your stay, experience one of our Westin Club Rooms or suites with access to The Club and all the daily benefits including breakfast, evening drinks and canapés and use of the club lounge throughout the day with complimentary tea and coffee.

Room Name	No. of Rooms	Area (sqm)
Westin Rooms	167	34
Accessible Rooms	13	37
Executive Club Rooms	80	34
Westin Suites	12	60
Renewal Suites with private balcony	26	54
Westin Penthouse	1	190
TOTAL	299	

ACTIVE

Enhance your well-being with a visit to our Heavenly Spa by Westin™. Located on our wellness floor the spa offers 5 holistic treatment rooms combined with 2 couples rooms and a revitalizing hydrotherapy bath. Re-energise and power up the pace at WestinWORKOUT® with a variety of cardio equipment as well as free weights and stretching. After all this activity, retreat to our very own tropical urban oasis and take an invigorating dip in Brisbane's largest hotel resort-style pool with swim-up bar.

FUEL

Nourish yourself at Eden's Table with world class cuisine. The hotel's signature dining venue, offers a live interactive kitchen to provide a truly personalised dining experience. The menu celebrates locally sourced produce from the Ocean and Paddock while showcasing a finely curated wine list of new and old world wines.

The Charles' is an Aviation inspired Jazz Bar that transitions from cafe to wine to cocktail. Watch the world go by in the heart of the Westin Lobby, with unique Street and Laneway access.

Nautilus swim up pool bar and deck is the perfect place to unwind. Soak up the sun in our tropical urban oasis and savour a range of popular hotel favourites, snacks, share plates, tropical juices, smoothies, cocktails and more.

In room dining is available 24 hours if you prefer to dine in the privacy of your room. The menu offers a variety of cuisines and healthy dining options.

Our Eat Well menus, available throughout the hotel, vividly pairs wholesome fruits, vegetables, grains and proteins to maximize the benefits to elevate your body.

FOCUS

Let us take care of you with intuitive extras such as wireless internet throughout the hotel. Our Service Express™ team can connect you with concierge services, business centre, valet parking, restaurant, spa, laundry and dry cleaning service - all just one call away.

THRIVE

With 930sqm of versatile conference and event space integrated with cutting edge technology, The Westin Brisbane provides a thoughtful and meaningful experience for guests to thrive and engage. The Ballroom, pre-function area and breakout rooms are located on the same floor to optimize collaboration and maximize interaction. Our professional team, supported by on-site technical experts, will help you deliver the best results, with personalized service and fresh and fulfilling menu options to fuel your day. From executive board meetings, an office retreat, dynamic product launch or an intimate wedding or family gathering, The Westin Brisbane has the perfect space, menu and team.

Westin Clutter-Free Meetings help planners and guests stay organized and productive while being socially conscious.

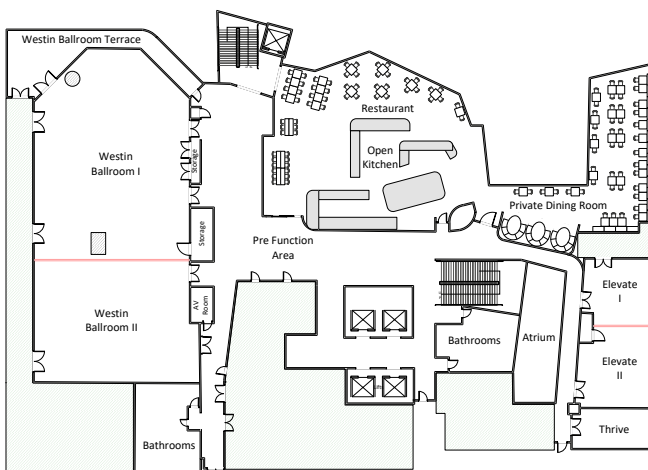
PERFECTLY LOCATED

The hotel is centrally located in the heart of Brisbane City just 200 metres walk from Queen Street Mall, Eagle Street Pier entertainment precinct and the picturesque Botanical Gardens. Brisbane's cultural precinct, Southbank and the Brisbane convention centre are an easy 10-15 minute walk away. Brisbane's central train station is 800 metres walk from the hotel with direct trains to the airport and key south east Queensland destinations. Access to Brisbane domestic and international airport is only 25 minutes by car or 35 minutes by train, adjacent to the Four Points by Sheraton Brisbane offering an integrated hotel stay.



©2017 Marriott International, Inc. All Rights Reserved. Marriott Bonvoy Westin and their logos are the trademarks of Marriott International, Inc., or its affiliates. For full terms and conditions, visit westinbrisbane.com

Room Dimensions + Seating Capacity



FUNCTION SPACE	AREA (SQM)	BANQUET	CABARET	CLASSROOM	THEATRE	U-SHAPE
WESTIN BALLROOM	450	300	240	222	405	
WESTIN BALLROOM I	300	190	152	177	285	54
WESTIN BALLROOM II	150	120	96	102	200	48
PRE FUNCTION AREA	150	-	-	-	-	-
ELEVATE	100	60	48	66	115	39
ELEVATE I	40	20	16	24	47	15
ELEVATE II	60	30	24	33	58	21
THRIVE	10	-	-	-	-	10
NAUTILUS	200	-	-	-	-	-
THE PODIUM	20	20	-	-	-	-
THE PROMENADE	100	40	-	-	-	-
THE PIER	80	60	-	-	-	-