

# FLOOR PLANS CAPACITY CHARTS

**THE WESTIN**  
O'HARE AIRPORT



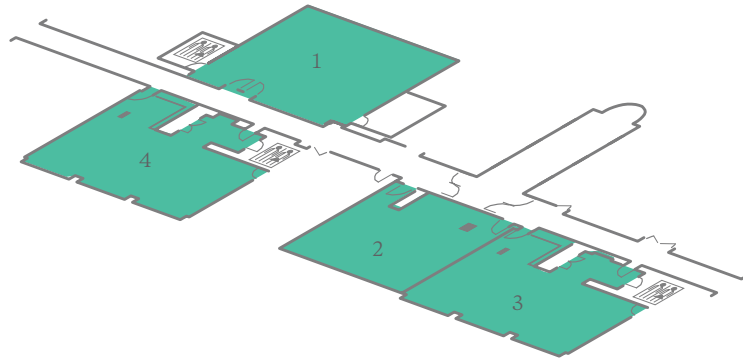
# MEETING SPACE OVERVIEW, PART ONE

6100 North River Road  
Rosemont, Illinois 60018  
T 847.698.6000 F 847.698.3993  
E [westinohare@starwoodhotels.com](mailto:westinohare@starwoodhotels.com)  
[westinohare.com](http://westinohare.com)

**THE WESTIN**  
O'HARE AIRPORT

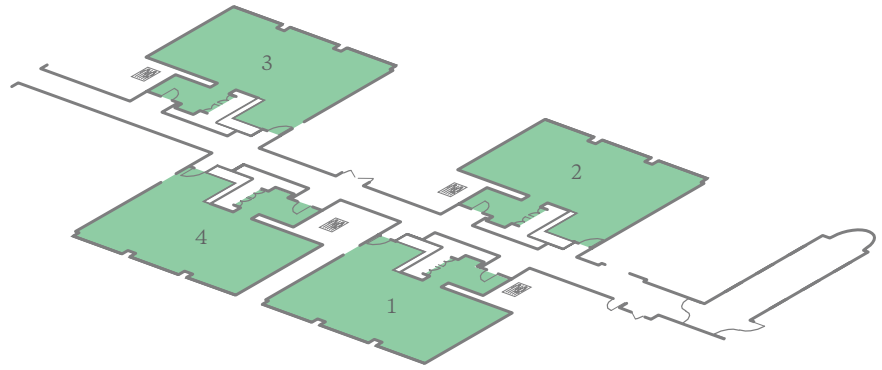
## TWELFTH FLOOR

1. BOARDROOM
2. AMBASSADOR
3. O'HARE 1
4. O'HARE 2



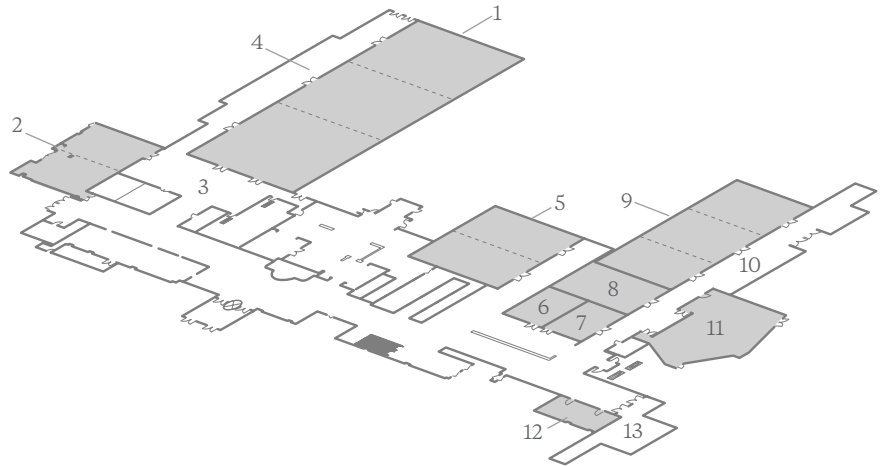
## THIRD FLOOR

1. ROSEMONT 1
2. ROSEMONT 2
3. ROSEMONT 3
4. ROSEMONT 4



## LOBBY LEVEL

1. GRAND BALLROOM
2. LAKESHORE
3. EAST FOYER
4. SOUTH FOYER
5. MICHIGAN BALLROOM
6. DEARBORN
7. DIVISION
8. MADISON
9. LA SALLE BALLROOM
10. LA SALLE FOYER
11. EXECUTIVE FORUM
12. HIGGINS
13. OUTDOOR TERRACE



### ROOMS AT A GLANCE

TOTAL GUEST ROOMS	525
TOTAL MEETING ROOMS	41
LARGEST MEETING ROOM CAPACITY	1,500
LARGEST MEETING ROOM SIZE	1,121 m <sup>2</sup> / 12,069 ft <sup>2</sup>

Additional spaces for meetings and events, not displayed here, may also be available. Contact your hotel representative for more information.

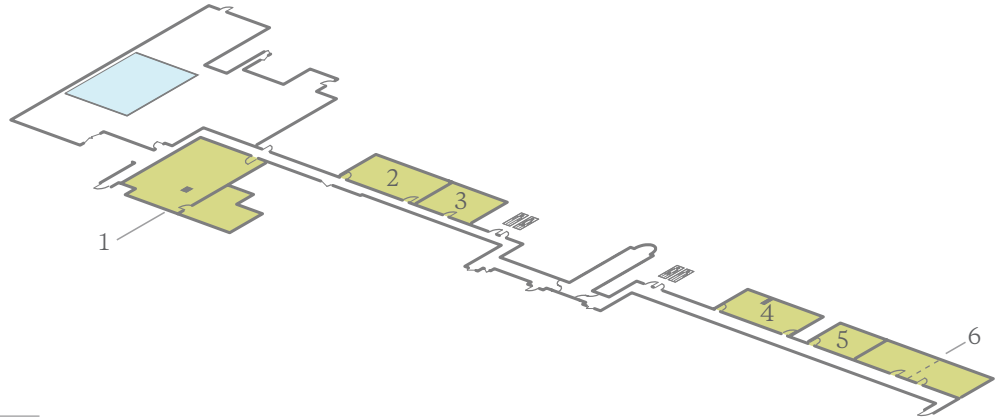
# MEETING SPACE OVERVIEW, PART TWO

6100 North River Road  
Rosemont, Illinois 60018  
T 847.698.6000 F 847.698.3993  
E westinohare@starwoodhotels.com  
westinohare.com

**THE WESTIN**  
O'HARE AIRPORT

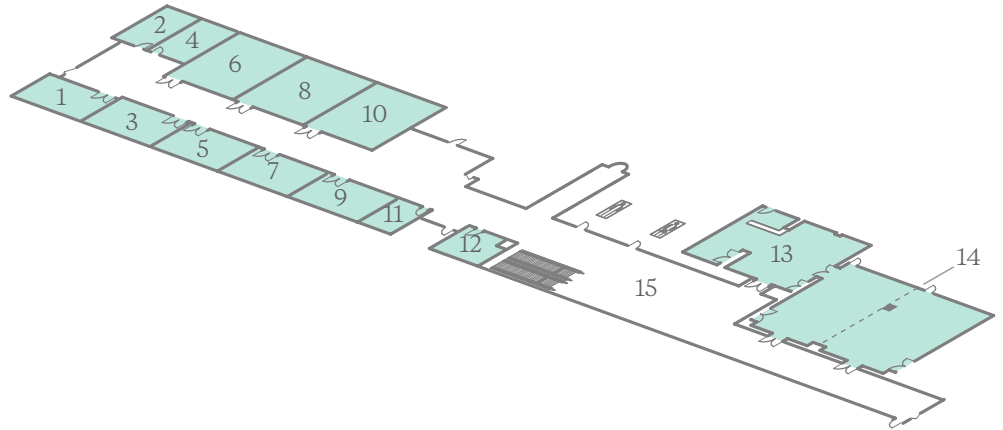
## SECOND FLOOR

1. RENEWAL
2. SHEFFIELD
3. GRAHAM
4. FRANKLIN
5. FULTON
6. WAVELAND



## LOWER LEVEL

1. WABASH
2. SHERMAN
3. WELLS
4. SENECA
5. WASHINGTON
6. SCHILLER
7. BURTON
8. STREETER
9. BANKS
10. STATE
11. GARLAND
12. CLARK
13. DIRECTOR'S PARLOR
14. DIRECTOR'S
15. LOWER LEVEL PREFUNCTION



### ROOMS AT A GLANCE

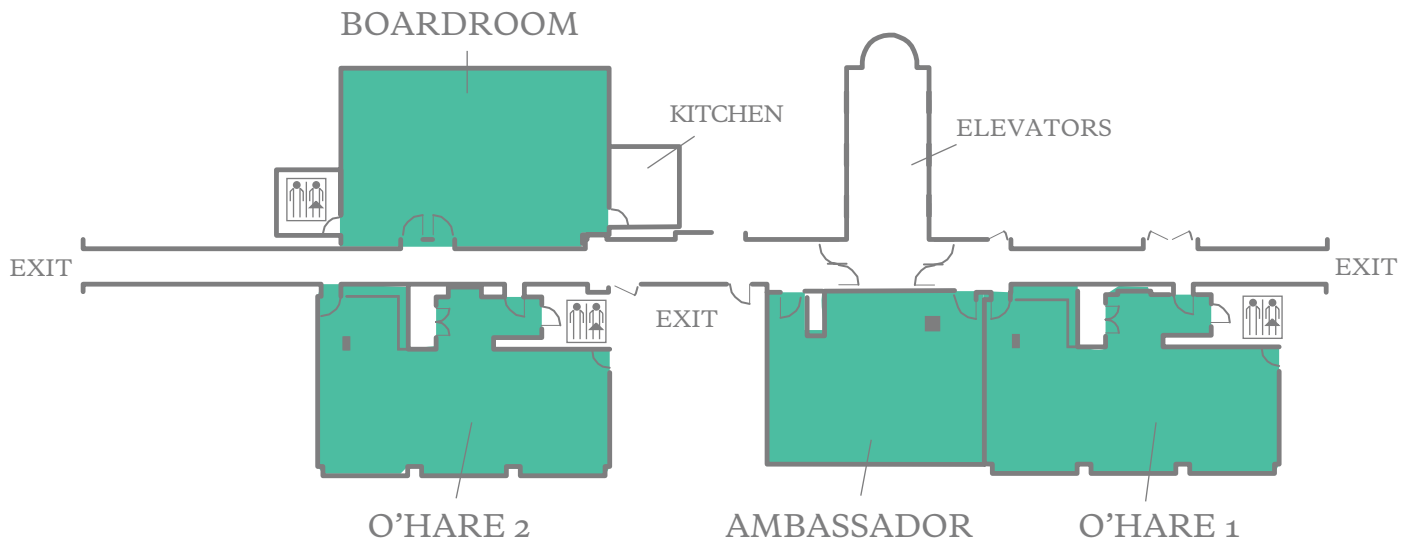
TOTAL GUEST ROOMS	525
TOTAL MEETING ROOMS	41
LARGEST MEETING ROOM CAPACITY	1,500
LARGEST MEETING ROOM SIZE	1,121 m <sup>2</sup> / 12,069 ft <sup>2</sup>

Additional spaces for meetings and events, not displayed here, may also be available. Contact your hotel representative for more information.

# MEETING SPACE TWELFTH FLOOR

6100 North River Road  
Rosemont, Illinois 60018  
T 847.698.6000 F 847.698.3993  
E westinohare@starwoodhotels.com  
westinohare.com

**THE WESTIN**  
O'HARE AIRPORT



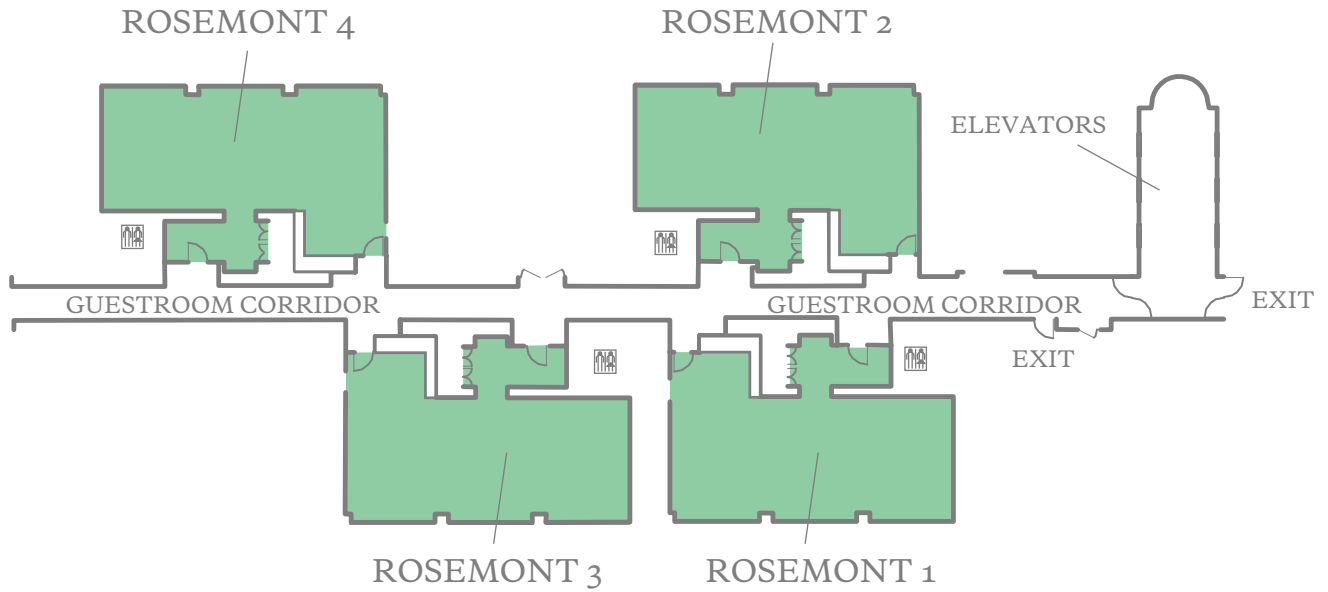
	DIMENSIONS	AREA (SQ. FT.)	MAX CEILING HEIGHT	THEATER	CLASSROOM	BANQUET	CONFERENCE	U-SHAPE	HOLLOW SQ.	RECEPTION
■ AMBASSADOR	28' X 33'	855	10'	48	—	20	12	—	—	40
■ BOARDROOM	27' X 41'	1,071	10'	—	—	—	22	—	—	112
■ O'HARE 1	29' X 44'	1,087	8.5'	50	42	40	30	27	30	114
■ O'HARE 2	29' X 44'	1,087	8.5'	50	42	40	30	27	30	114

This document contains approximate measurements and square footage that are for illustrative purposes only. We cannot guarantee the floor plan accuracy or completeness, therefore encourage you to review the space to make sure it is suitable for your event.

# MEETING SPACE THIRD FLOOR

6100 North River Road  
Rosemont, Illinois 60018  
T 847.698.6000 F 847.698.3993  
E westinohare@starwoodhotels.com  
westinohare.com

**THE WESTIN**  
O'HARE AIRPORT



	DIMENSIONS	AREA (SQ. FT.)	MAX CEILING HEIGHT	THEATER	CLASSROOM	BANQUET	CONFERENCE	U-SHAPE	HOLLOW SQ.	RECEPTION
■ ROSEMONT 1	29' X 44'	1,067	8.5'	50	42	40	30	27	30	112
■ ROSEMONT 2	29' X 44'	1,067	8.5'	50	42	40	30	27	30	112
■ ROSEMONT 3	29' X 44'	1,067	8.5'	50	42	40	30	27	30	112
■ ROSEMONT 4	29' X 44'	1,067	8.5'	50	42	40	30	27	30	112

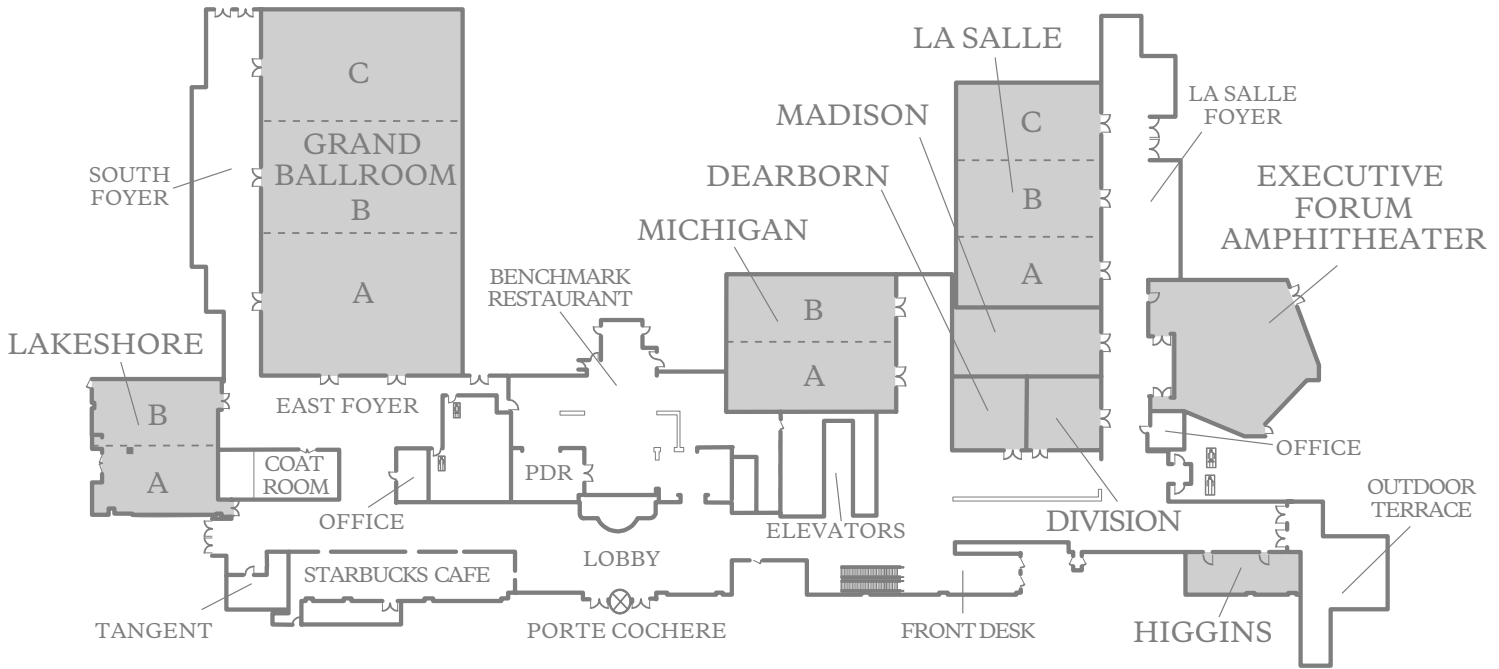
This document contains approximate measurements and square footage that are for illustrative purposes only. We cannot guarantee the floor plan accuracy or completeness, therefore encourage you to review the space to make sure it is suitable for your event.

# MEETING SPACE LOBBY LEVEL

6100 North River Road  
Rosemont, Illinois 60018  
T 847.698.6000 F 847.698.3993  
E westinohare@starwoodhotels.com  
westinohare.com

# THE WESTIN

O'HARE AIRPORT



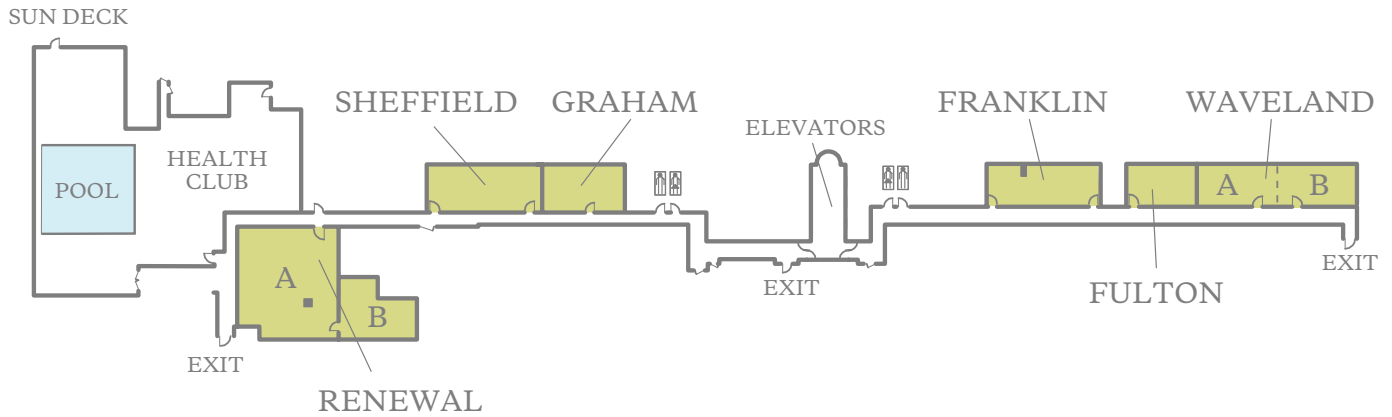
	DIMENSIONS	AREA (SQ. FT.)	MAX CEILING HEIGHT	THEATER	CLASSROOM	BANQUET	CONFERENCE	U-SHAPE	HOLLOW SQ.	RECEPTION
■ DEARBORN	29' X 29'	766	10'	50	27	40	18	18	24	80
■ DIVISION	25' X 29'	713	10'	50	27	40	18	18	24	75
■ GRAND BALLROOM	80' X 147'	11,728	22.5'	1,100	700	910	—	—	—	1,234
■ GRAND SALON A	80' X 57'	4,566	22.5'	437	252	280	66	87	90	480
■ GRAND SALON A - B	80' X 101'	8,068	22.5'	700	470	560	—	—	—	849
■ GRAND SALON B	80' X 44'	3,502	22.5'	304	168	210	66	81	90	368
■ GRAND SALON B - C	80' X 90'	7,161	22.5'	600	440	560	—	96	96	753
■ GRAND SALON C	80' X 46'	3,659	22.5'	342	168	210	66	81	90	385
GRAND FOYER EAST	50' X 87'	2,923	22.5'	—	—	—	—	—	—	—
GRAND FOYER SOUTH	27' X 140'	3,047	22.5'	—	—	—	—	—	—	—
■ HIGGINS	16' X 49'	784	10'	36	24	—	30	—	—	74
■ LAKESHORE A - B	57' X 55'	2,679	10'	257	138	150	42	45	48	281
■ LAKESHORE A	56' X 28'	1,345	10'	88	72	80	30	30	36	141
■ LAKESHORE B	51' X 27'	1,333	12.4'	80	72	60	30	30	36	140
■ LASALLE BALLROOM	58' X 90'	5,229	13'	520	270	400	—	—	—	550
■ LASALLE A	58' X 29'	1,651	13'	150	90	100	42	45	54	173
■ LASALLE A - B	58' X 58'	3,371	13'	299	180	250	48	63	78	354
■ LASALLE B	58' X 30'	1,720	13'	150	90	100	42	45	54	181
■ LASALLE B - C	58' X 62'	3,579	13'	300	180	250	48	66	84	376
■ LASALLE C	58' X 32'	1,859	13'	150	90	100	42	45	54	195
LASALLE FOYER	30' X 92'	2,399	13'	—	—	—	—	—	—	—
■ MADISON	58' X 25'	1,458	13'	112	90	100	42	42	48	153
■ MICHIGAN BALLROOM	67' X 53'	3,537	11.5'	300	160	200	40	66	78	372
■ MICHIGAN A	67' X 26'	1,719	11.5'	150	108	100	30	50	54	180
■ MICHIGAN B	67' X 27'	1,817	11.5'	150	108	100	30	50	54	191
MICHIGAN FOYER	97' X 30'	2,483	—	—	—	—	—	—	—	—

This document contains approximate measurements and square footage that are for illustrative purposes only. We cannot guarantee the floor plan accuracy or completeness, therefore encourage you to review the space to make sure it is suitable for your event.

# MEETING SPACE SECOND FLOOR

6100 North River Road  
Rosemont, Illinois 60018  
T 847.698.6000 F 847.698.3993  
E westinohare@starwoodhotels.com  
westinohare.com

**THE WESTIN**  
O'HARE AIRPORT

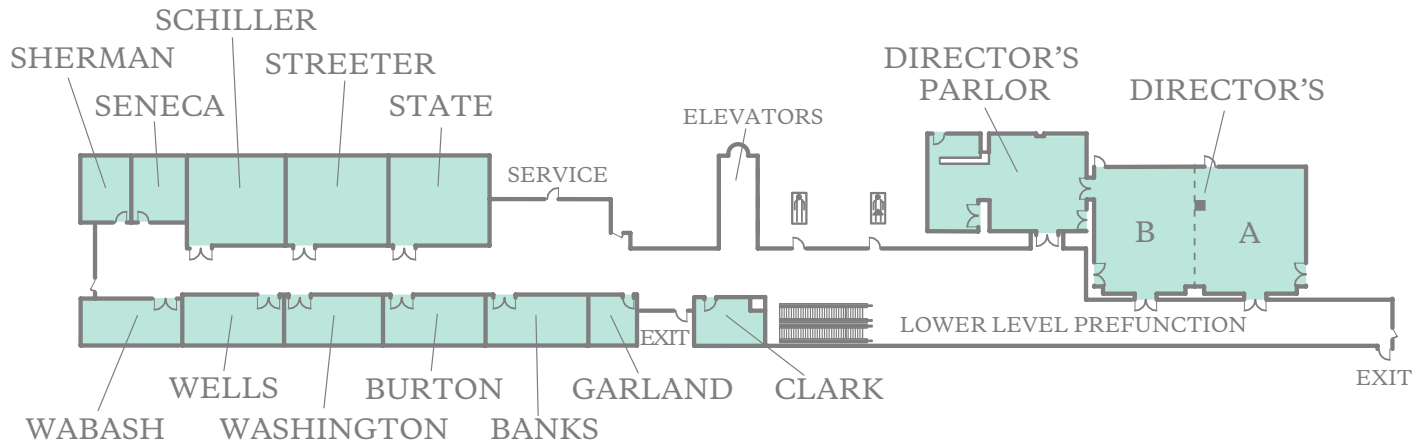


	DIMENSIONS	AREA (SQ. FT.)	MAX CEILING HEIGHT	THEATER	CLASSROOM	BANQUET	CONFERENCE	U-SHAPE	HOLLOW SQ.	RECEPTION
■ FRANKLIN	14' X 38'	518	10'	—	—	—	14	—	—	54
■ FULTON	15' X 23'	345	10'	20	9	—	12	—	—	36
■ GRAHAM	14' X 27'	372	8'	23	9	—	12	—	—	39
■ RENEWAL A	37' X 33'	1,222	10'	78	36	50	24	21	24	128
■ RENEWAL B	21' X 25'	444	10'	29	15	—	12	—	—	46
■ SHEFFIELD	15' X 39'	578	10'	24	21	—	24	—	—	60
■ WAVELAND	13' X 57'	739	8'	—	—	40	—	—	—	78
■ WAVELAND A	13' X 28'	371	8'	20	9	20	12	—	—	39
■ WAVELAND B	13' X 29'	377	8'	20	9	20	12	—	—	39

# MEETING SPACE LOWER LEVEL

6100 North River Road  
Rosemont, Illinois 60018  
T 847.698.6000 F 847.698.3993  
E westinohare@starwoodhotels.com  
westinohare.com

**THE WESTIN**  
O'HARE AIRPORT



	DIMENSIONS	AREA (SQ. FT.)	MAX CEILING HEIGHT	THEATER	CLASSROOM	BANQUET	CONFERENCE	U-SHAPE	HOLLOW SQ.	RECEPTION
■ BANKS	13' X 27'	343	10'	25	9	—	12	—	—	36
■ BURTON	13' X 27'	338	10'	25	9	—	12	—	—	35
■ CLARK	13' X 18'	231	10'	12	6	—	6	—	—	24
■ DIRECTOR'S A - B	34' X 57'	1,939	10'	154	90	110	36	36	42	204
■ DIRECTOR'S A	34' X 30'	1,016	10'	70	45	60	24	24	24	106
■ DIRECTOR'S B	34' X 27'	923	10'	70	45	60	24	24	24	97
■ GARLAND	13' X 12'	160	10'	10	6	—	6	—	—	16
LOWER LEVEL PREFUNCTION	55' X 351'	6,523	10'	—	—	—	—	—	—	—
■ SCHILLER	24' X 27'	654	10'	48	36	40	18	18	24	68
■ SENECA	18' X 14'	244	10'	14	6	—	6	—	—	25
■ SHERMAN	18' X 14'	247	10'	18	6	—	6	—	—	25
■ STATE	26' X 28'	726	10'	60	36	40	18	21	24	76
■ STREETER	24' X 27'	652	10'	48	36	40	18	18	24	68
■ WABASH	15' X 28'	404	10'	25	9	—	12	—	—	42
■ WASHINGTON	13' X 26'	334	10'	25	9	—	12	—	—	35
■ WELLS	13' X 27'	344	10'	25	9	—	12	—	—	36





6100 North River Road  
Rosemont, Illinois 60018  
T 847.698.6000 F 847.698.3993  
E [westinohare@starwoodhotels.com](mailto:westinohare@starwoodhotels.com)  
[westinohare.com](http://westinohare.com)

**THE WESTIN**  
O'HARE AIRPORT