



SECLUDED BEACH GETAWAY

Phuket Marriott Resort & Spa, Merlin Beach is positioned as a MICE resort, complementing a beautiful secluded stretch of white sandy beach.



MARRIOTT RESORT
PHUKET
MERLIN BEACH

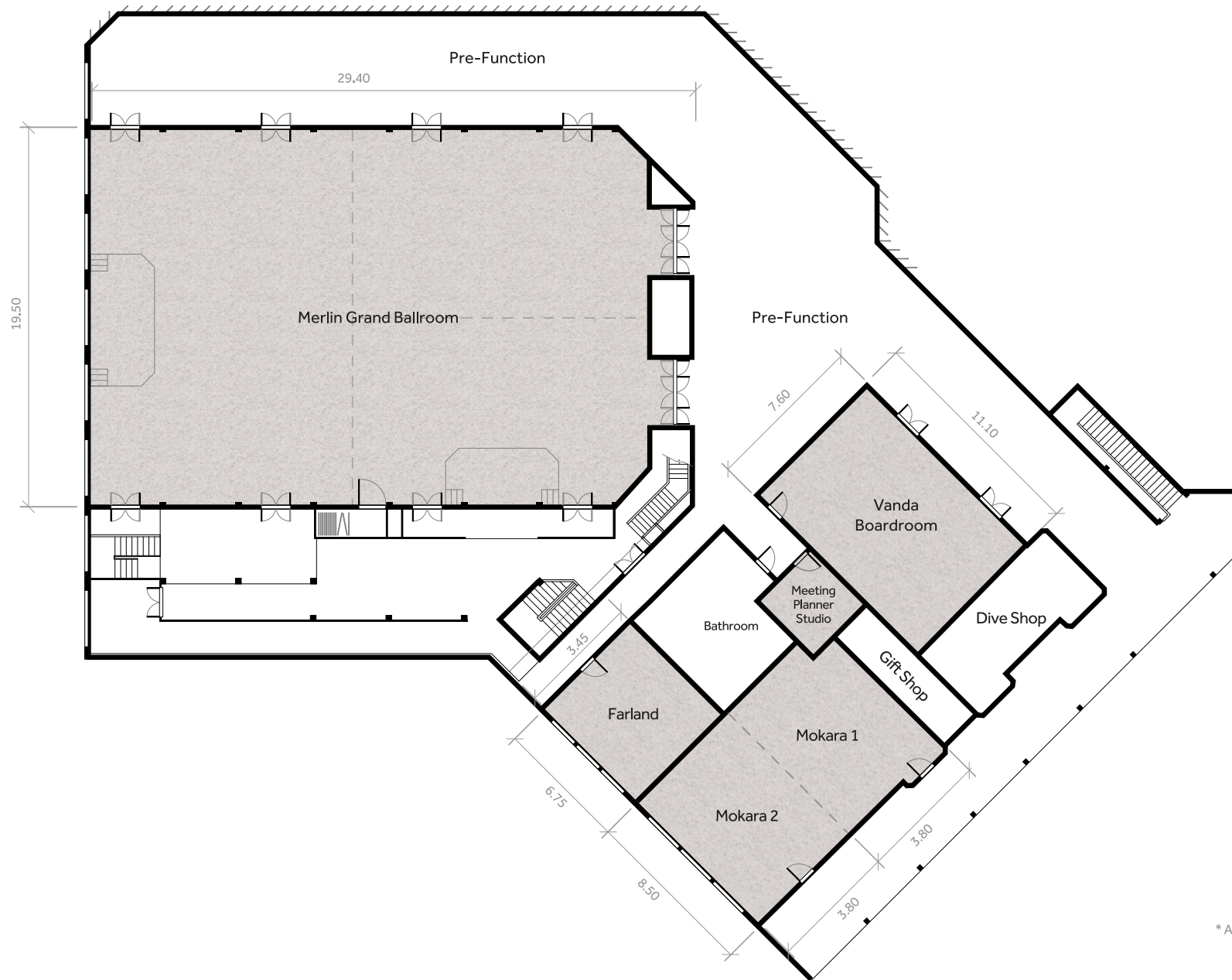
DYNAMIC EXPERIENCES

Set amongst forested mountains and lush, tropical landscaped gardens, and located on a beautiful secluded stretch of Tri-Trang Beach, this Phuket spa resort boasts its own reef, butterfly sanctuary and stylish accommodation. It offers 414 guestrooms featuring state-of-the-art facilities with 10 superbly designed rooms and suites options.



MEETING ROOM	DIMENSIONS		CAPACITY					
	W x L x H	Sqm	Theater	Boardroom	Classroom	U-Shape	Cocktail	Dinner
MERLIN GRAND BALLROOM	29.40 x 19.50	573	650	60-70	200-240	145	550	300-350
Ballroom A	13.60 x 9.75	132.5	80	20-30	45-60	35-50	120	50-60
Ballroom B	13.60 x 9.75	132.5	80	20-30	45-60	35-50	120	50-60
Ballroom C	15.80 x 19.50	308	200	30-35	120-140	108	280	120-150
Ballroom A & B	13.60 x 19.50	265	180	50-60	100-120	60-100	240	100-120
Vanda Boardroom	7.60 x 11.10	84	60	24	30-40	30-36	30-50	40-50
MOKARA	8.50 x 7.60	64.6	60	-	30	20	60-80	40
Mokara 1	8.50 x 3.80	32.3	30	20	15	20	30-40	20
Mokara 2	8.50 x 3.80	32.3	30	20	15	20	30-40	20
FARLAND	6.75 x 3.45	23.2	16	10	9	-	10	-





* All measurements are in metres.

PHUKET MARRIOTT RESORT & SPA, MERLIN BEACH

T: +66.(0)76.335.300 | F: +66.(0)76.335.335

99 Muen-Ngoen Road, Tri-Trang Beach, Patong, Phuket 83150 Thailand

Marriott.com/HKTMB

 @marriotphuketmerlinbeach

 @phuketmarriottmerlinbeach

ACCOMMODATION

Committed to a smoke-free environment

- 414 rooms and suites • Luxurious bedding with down comforters and cotton linens • Individual climate control • 48" LCD satellite TV

RESTAURANTS & LOUNGES

A variety of international and local options to choose from

- Merchant Kitchen, all-day dining
- D.O.C.G., signature Italian cuisine
- Beach Grill, a casual beachside grill
- Thai Pantry, authentic Thai experiences
- Phuket Coffee Co., beachside coffee house
- The Lounge, handcrafted food and beverages
- Pool Bar, refreshing drinks at the lagoon pool
- Wellness, poolside juice bar
- The Rum Shack, beachfront bar

RECREATION & LEISURE

Three beautifully-appointed swimming pools

- 24-hour fitness center • The Spa • Butterfly Sanctuary • House Reef • Dive Center • Muay Thai • Yoga • Fire Show • Kid's Club

ATTRACTIONS

- Phi Phi Island • James Bond Island • Khai Island • Weekend Market Tours • Phuket Town Tours • Chalong Temple • Promthep Cape • Big Buddha • Jungceylon Shopping Center • Central Festival Shopping Center

GUEST SERVICES

Offering Mobile Check-In and Checkout

- The Lounge provides exclusive space to work, recharge, connect and relax • Wireless high-speed Internet • On-site parking • Shuttle buses for a fee • Tour service • Guest laundry and dry-cleaning service • ATM

MEETING FACILITIES

7 meeting rooms • Merlin Grand Ballroom (573 sqm, 3 rooms) • Vanda Room (84 sqm) • 3 breakout rooms: Mokara 1 & 2 (64.6 sqm) and Farland (23.2 sqm) with daylight

- Beach Lawn • All meeting spaces feature the latest technology

LOCATION

Our Phuket resort is located near Patong, not far from the island's eclectic entertainment and nightlife area but near enough to enjoy the secluded white sand beach.